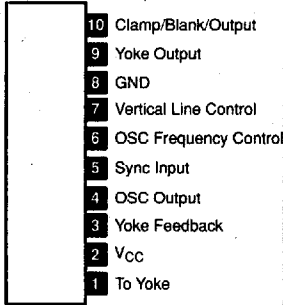
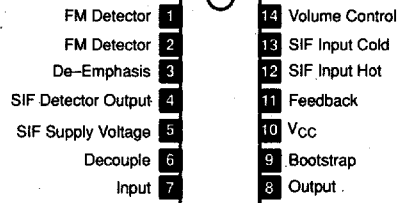


LINEAR INTEGRATED CIRCUITS

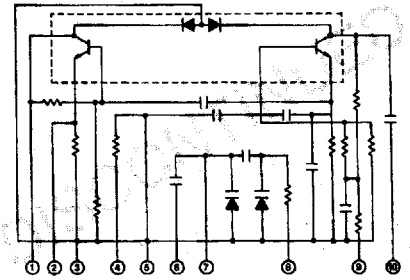
NTE1245 (Front View) 10-Lead SIP, See Diag. 235
Vertical Deflection for B/W and Small Color TV, $V_{CC} = 20V$



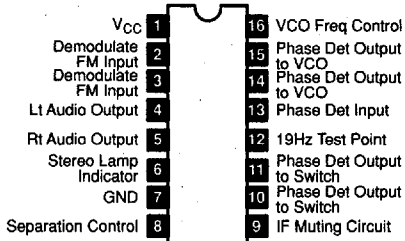
NTE1246 14-Lead DIP, See Diag. 269
TV Sound IF, Audio Output, 2.4W, $V_{CC} = 12V$



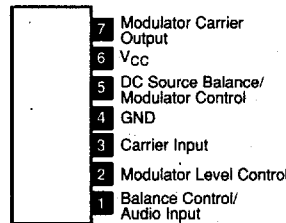
NTE1247 10-Lead SIP, See Diag. 221
Hybrid, CB VCO



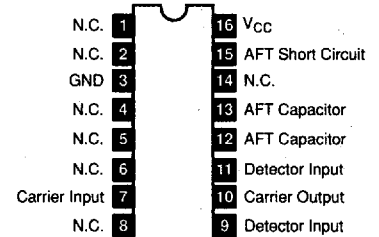
NTE1248 16-Lead DIP, See Diag. 249
Phase Lock Loop (PLL) FM Multiplex Stereo Demod, $V_{CC} = 16V$ max



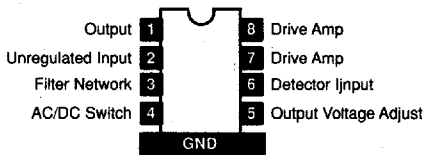
NTE1249 (Front View) 7-Lead SIP, See Diag. 215
Balance Modulator, $V_{CC} = 14.4V$



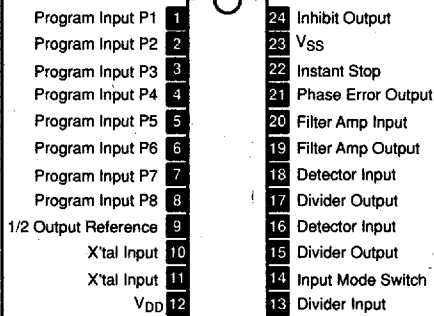
NTE1250 16-Lead DIP, See Diag. 248
AFT Circuit.



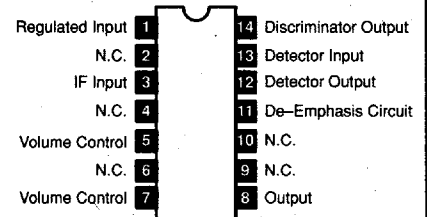
NTE1251 8-Lead DIP, See Diag. 264
Voltage Regulator w/Filter, 13.1V



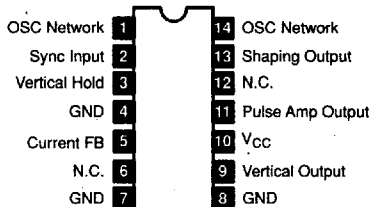
NTE1254 24-Lead DIP, See Diag. 252
Phase Lock Loop (PLL) Frequency Synthesizer for CB, $V_{DD} = -0.3V$ to +6V



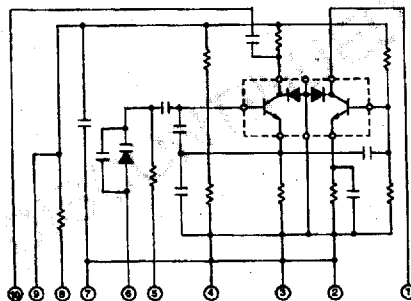
NTE1257 14-Lead DIP, See Diag. 269
FM IF Detector



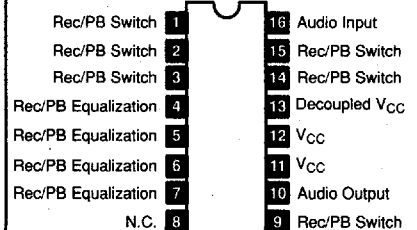
NTE1258 14-Lead DIP, See Diag. 286
Vertical Hold Oscillator, Output



NTE1262 10-Lead SIP, See Diag. 221
HYbrid, CB VCO



NTE1263 16-Lead DIP, See Diag. 249
Record/Playback Circuit for VCR, $V_{CC} = 12V$ Typ



See Diagrams, beginning on Page 1-227