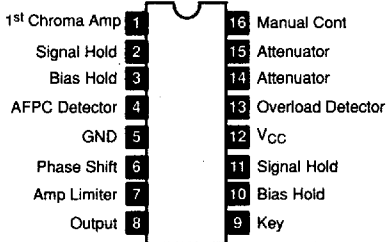
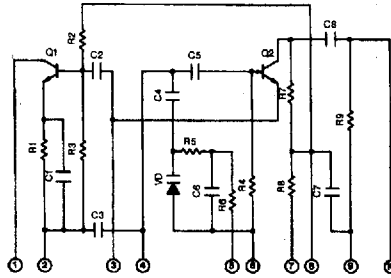


LINEAR INTEGRATED CIRCUITS

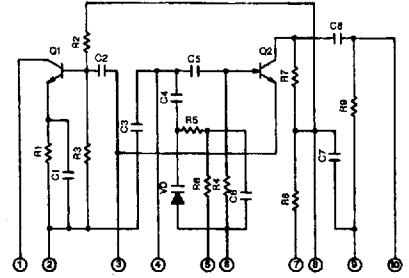
NTE1200 16-Lead DIP, See Diag. 249
Color TV Chroma Processor,
 $V_{CC} = 13.2V$



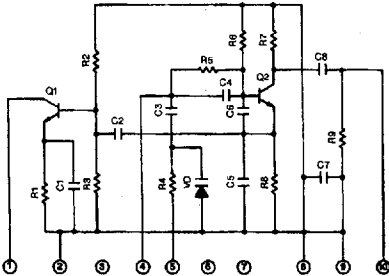
NTE1201 10-Lead SIP, See Diag. 221
Module, Hybrid, CB VCO



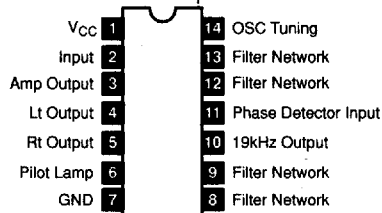
NTE1202 10-Lead SIP, See Diag. 221
Module, Hybrid, CB VCO



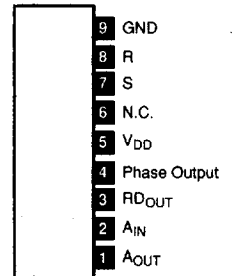
NTE1203 10-Lead SIP, See Diag. 221
Module, Hybrid, CB VCO



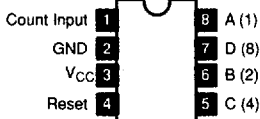
NTE1206 14-Lead DIP, See Diag. 250
Phase Lock Loop (PLL) Stereo Decoder,
 $V_{CC} = 16V$



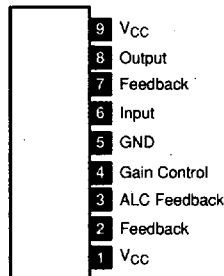
NTE1208 (Front View) 9-Lead SIP, See Diag. 213
CMOS, Phase Comparator,
 $V_{DD} = 10V$ Max



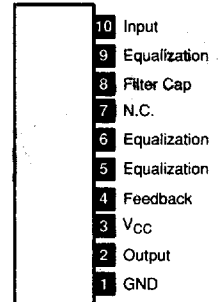
NTE1209 8-Lead DIP, See Diag. 246
4-Bit Binary Counter



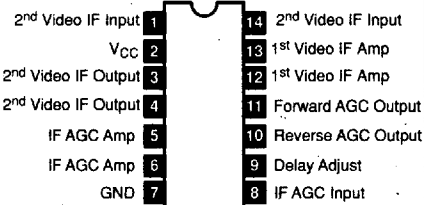
NTE1210 (Front View) 9-Lead SIP, See Diag. 223
Preamp w/ALC, $V_{CC} = 15V$



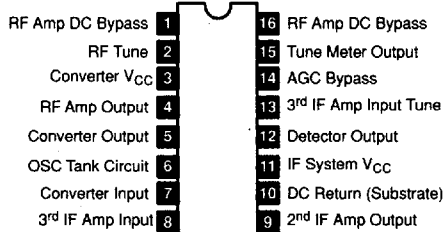
NTE1211 (Front View) 10-Lead SIP, See Diag. 237
Audio Power Amp, 5.5W,
 $V_{CC} = 13.2V$



NTE1213 14-Lead DIP, See Diag. 250
TV Video IF Amp,
 $V_{CC} = 15V$



NTE1214 16-Lead DIP, See Diag. 248
AM Tuner System,
 $V_{CC} = 16V$



NTE1215 16-Lead DIP, See Diag. 248
Stereo Equalizer Amp,
 $V_{CC} = 15V$

