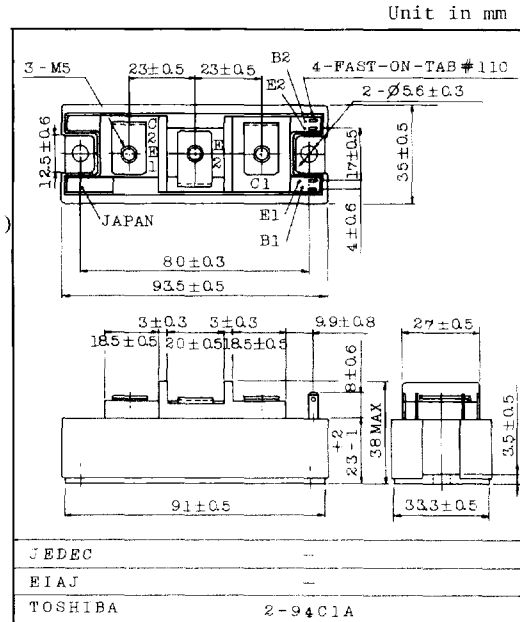
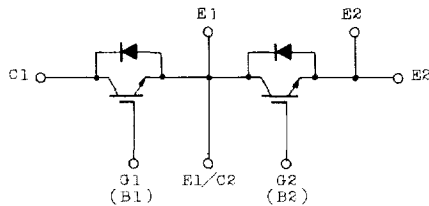


HIGH POWER SWITCHING APPLICATIONS.
MOTOR CONTROL APPLICATIONS.

FEATURES:

- . High Input Impedance
- . High Speed : $t_f=1.0\mu s(\text{Max.})$
 $t_{rr}=0.5\mu s(\text{Max.})$
- . Low Saturation Voltage : $V_{CE}(\text{sat})=5.0V(\text{Max.})$
- . Enhancement-Mode
- . Includes a Complete Half Bridge in One Package.
- . The Electrodes are Isolated from Case.

EQUIVALENT CIRCUIT



Weight : 220g

MAXIMUM RATINGS ($T_a=25^\circ\text{C}$)

CHARACTERISTIC	SYMBOL	RATING	UNIT
Collector-Emitter Voltage	V_{CES}	500	V
Gate-Emitter Voltage	V_{GES}	± 20	V
Collector Current	DC	I_C	100
	1ms	I_{CP}	200
Forward Current	DC	I_F	100
	1ms	I_{FM}	200
Collector Power Dissipation ($T_c=25^\circ\text{C}$)	P_C	400	W
Junction Temperature	T_j	150	$^\circ\text{C}$
Storage Temperature Range	T_{stg}	-40~125	$^\circ\text{C}$
Isolation Voltage	V_{isol}	2500 (AC 1 minute)	V
Screw Torque (Terminal/Mounting)	-	30/30	kg·cm

MG100H2YS1

ELECTRICAL CHARACTERISTICS (Ta=25°C)

CHARACTERISTIC		SYMBOL	TEST CONDITION	MIN.	TYP.	MAX.	UNIT
Gate Leakage Current		IGES	VGE=±20V, VCE=0	-	-	±500	nA
Collector Cut-off Current		ICES	VCE=500V, VGE=0	-	-	1.0	mA
Collector-Emitter Breakdown Voltage		V(BR)CES	IC=10mA, VGE=0	500	-	-	V
Gate-Emitter Cut-off Voltage		VGE(OFF)	IC=100mA, VCE=5V	3.0	-	6.0	V
Collector-Emitter Saturation Voltage		VCE(sat)	IC=100A, VGE=15V	-	3.0	5.0	V
Input Capacitance		Cies	VCE=10V, VGE=0, f=1MHz	-	7200	-	pF
Switching Time	Rise Time	tr		-	0.7	1.5	μs
	Turn-on Time	ton		-	0.8	1.5	
	Fall Time	tf		-	0.3	1.0	
	Turn-off Time	toff		-	0.8	1.5	
Forward Voltage		VF	IF=100A, VGE=0	-	2.0	2.5	V
Reverse Recovery Time		trr	IF=100A, VGE=-10V di/dt=100A/μs	-	0.25	0.5	μs
Thermal Resistance		Rth(j-c)	Transistor	-	-	0.31	°C/W
			Diode	-	-	0.83	

