

STOCKHOLM SWEDEN

Proplex instructions

REF



About

P-2



A cocktail for your hair.

REF Proplex uses cutting edge technology as an essential and effective tool for hairdressers. This scientifically developed formula contains a high concentration of 5 active ingredients – creating a powerful and effective treatment for hair. Mixed with hair colour or bleach, Proplex acts as a barrier, protecting and preventing damage to the hair. It reconnects bonds and

protects the internal structure of the hair, adding elasticity, strength, suppleness and visibly enhanced condition. Chemical processing can cause damage to the hair by breaking the internal bonds, leaving the hair dry, brittle and ultimately weak. The use of Proplex counteracts this damage by protecting and repairing the bonds.

The formula

P-4



Based on five advanced technologies

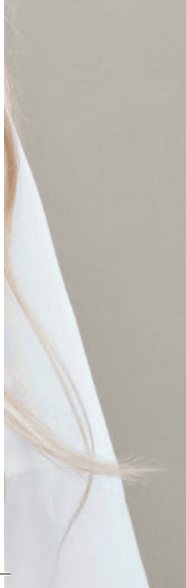
1. Proplex penetrates the interior of the hair by reconnecting and repairing broken disulfide bonds. Cutting -edge technology uses high amino acid concentration along with quinoa and vegetable proteins.

2. Jojoba seed oil penetrates the cortex of the hair-adding shine and improving elasticity.

3. Vitamin E penetrates the hair, providing internal nourishment while its antioxidant properties help to neutralize any residual oxidation from colouring or bleach/lightening services.

4. Proplex contains a styling agent that connects itself to the hair, protecting and improving the strength and condition of the hair.

5. Vitamin B5 (Panthenol) spreads evenly on the surface of each hair strand, forming a smooth, protective shield. This protective shield locks the other 4 ingredients into the hair strand creating enhanced light-reflecting qualities. This process creates beautiful healthy looking hair with added gloss and shine. The protective shield also provides enhanced detangling properties ensuring hair is tangle-free, reducing the risk of breakage.



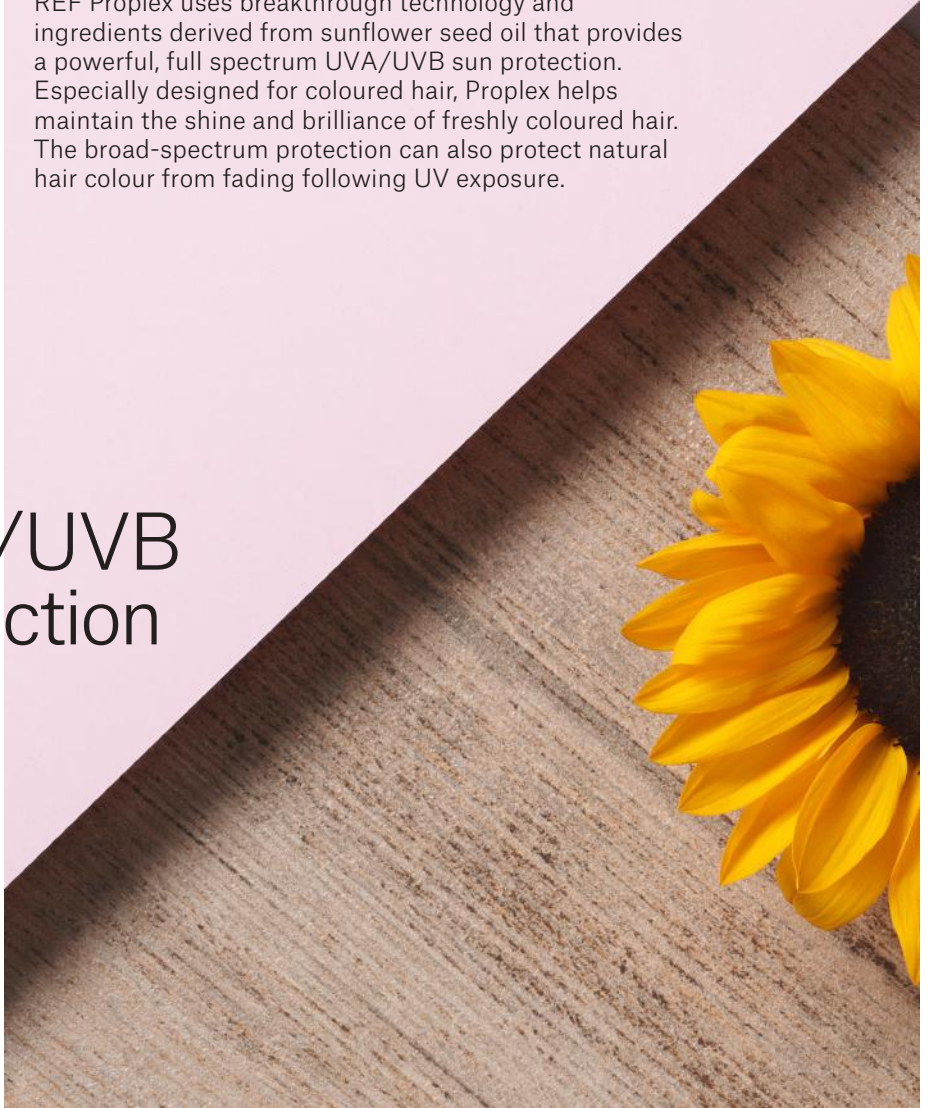
UV
Colour protection

P—6



REF Proplex uses breakthrough technology and ingredients derived from sunflower seed oil that provides a powerful, full spectrum UVA/UVB sun protection. Especially designed for coloured hair, Proplex helps maintain the shine and brilliance of freshly coloured hair. The broad-spectrum protection can also protect natural hair colour from fading following UV exposure.

UVA/UVB
Protection





How it is used

The treatment process requires three connected products. Two in-salon products and one for home use.

1. 01. Bonder

Intermixed with the colour or bleach/lightener product, Proplex reconnects bonds while protecting the existing internal structure of the hair.

02 .Perfector Strengthening cream to cross-link bonds reconnected by .01 Bonder into the cortex, while delivering added hydration and nourishment.

03. Maintainer

Strengthening cream for home use. Apply twice a week between chemical treatments. Delivers intensive hydration and nourishment.

The Importance of Maintenance

By using the 03. Maintainer twice a week, the treatment buffers the cortex with vegetable proteins, making the effect of the treatment last longer. The combination of the vast repairing abilities and the broad UV protection makes it the perfect tool to maintain healthy, brilliant hair between treatments.





Instructions

Hair Colour Treatment:

1. Mix hair colour and peroxide according to manufacturer's instructions. Once the hair colour is properly mixed into the bowl add 1ml of O1. Bonder per every 10g/ml of hair colour cream. Apply the hair colour and leave on hair as per manufacturer's timing. Rinse off and carefully shampoo.

2. Apply a generous amount of O2. Perfector from the roots to ends and leave on for minimum 10 minutes. Rinse off and blow dry.

Advise the consumer to use O3. Maintainer twice a week after washing hair. The O3. Maintainer will buffer with proteins and add nourishment.

3. Apply a generous amount of O3. Maintainer from roots to ends to damp hair. Leave in for minimum 10 minutes. Rinse and follow by conditioner.

Ultra lift hair colour treatment:

1. Mix hair colour and peroxide according to manufacturer's instructions. Once the hair colour is properly mixed into the bowl, add 7.5 ml of O1. Bonder per every 50g/ml of hair colour cream. Apply the hair colour and leave on as usual. Rinse off and gently shampoo.

2. Apply a generous amount of O2. Perfector from the roots to ends and leave on for minimum 10 minutes. Rinse off and blow dry.

Advise the consumer to use O3. Maintainer twice a week after washing hair. The O3. Maintainer will buffer with proteins and add nourishment.

3. Apply a generous amount of O3. Maintainer from roots to ends to damp hair. Leave in for minimum 10 minutes. Rinse and follow by conditioner.

**Bleach/lightener:**

1. Mix bleach/lightener powder and peroxide according to manufacturer's instructions. Once the bleach/lightener is properly mixed, add 2ml of O1. Bondor per 10g of bleaching/lightening powder into the bowl. Apply the mixture and leave on as usual. Rinse off carefully and shampoo.

2. Apply a generous amount of O2. Perfector from the roots to ends and leave on for minimum 10 minutes. Rinse off and blow dry.

Advise the consumer to use O3. Maintainer twice a week after washing hair. The O3. Maintainer will buffer with proteins and add nourishment.

3. Apply a generous amount of O3. Maintainer from roots to ends to damp hair. Leave in for minimum 10 minutes. Rinse and follow by conditioner.

Damage Shield Treatment:

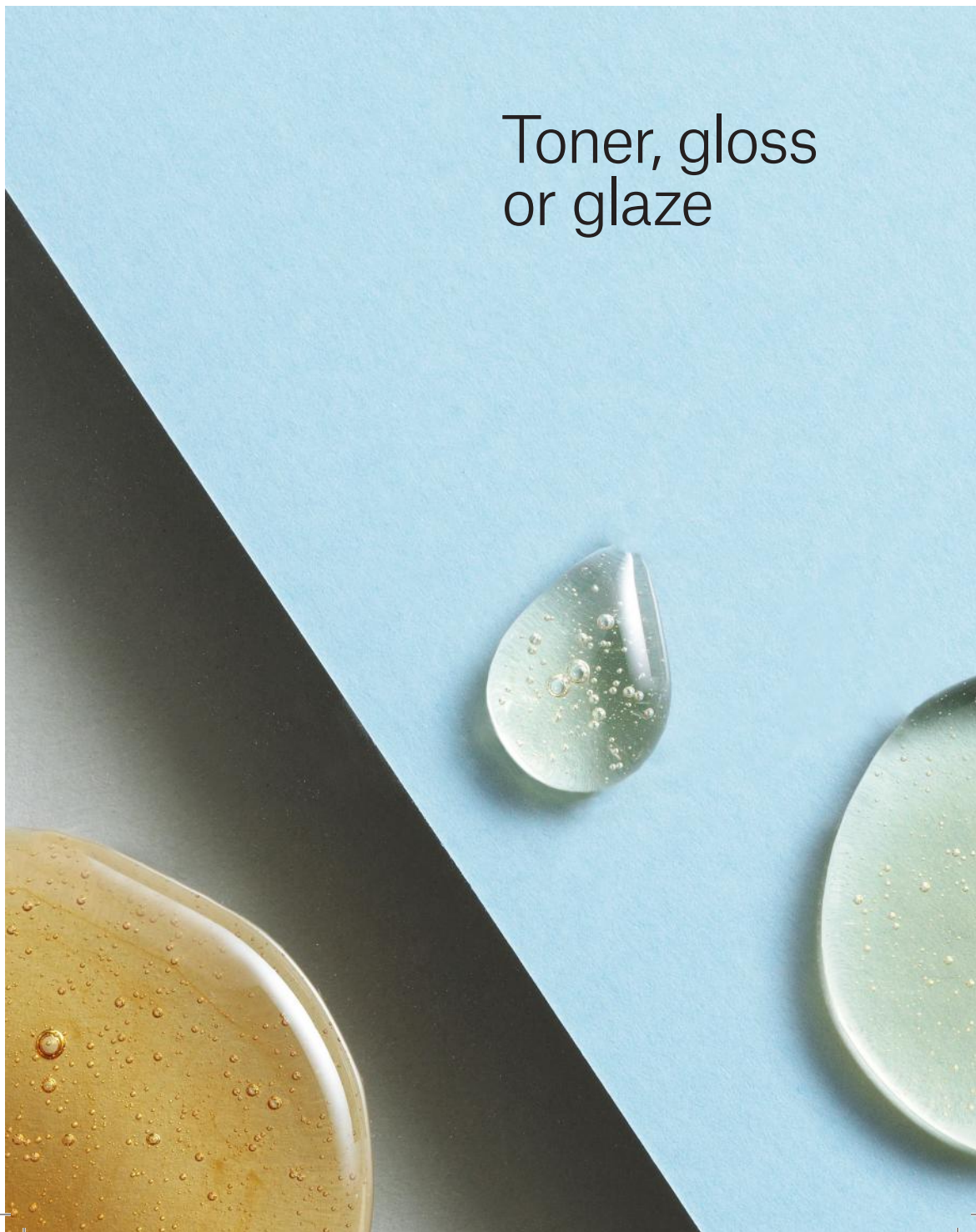
1. Mix 10ml/g of O1. Bondor with 10ml/g O2. Perfector. Apply on newly washed, towel dry hair from roots to ends. Place under heat source for 10 minutes. Rinse carefully.

2. Proceed with a second application of O2. Perfector from roots to ends. Spread evenly and leave on for 5 minutes.

Advise the consumer to use O3. Maintainer twice a week after washing hair. The O3. Maintainer will buffer with proteins and add nourishment.

3. Apply a generous amount of O3. Maintainer from roots to ends to damp hair. Leave in for minimum 10 minutes. Rinse and follow by conditioner.

Toner, gloss or glaze



When using Proplex 01. Bonder in your gloss.

- + For 60g or more of gloss or toner, add 3.75ml Proplex 01. Bonder.
- + For anything less than 60g, add 2ml Proplex 01. Bonder.

There are two ways to use Proplex 02. Perfector when toning. As a general rule, we recommend toning prior to using Proplex 02. Perfector.

If your manufacturer's instructions indicate to shampoo after toning: Rinse highlights, apply toner, process, rinse and shampoo, towel dry. Apply 02. Proplex Perfector. Allow the Proplex Perfector to process for a minimum of 10 minutes before rinsing and conditioning as usual. If your manufacturer's instructions say to

rinse - not shampoo after toning: Use 02. Proplex Perfector before your toner. Rinse the highlights, towel dry, apply a generous amount of Proplex Perfector for 10 or more minutes. Rinse and towel dry. NOTE: Be sure to rinse toner thoroughly to prevent any cream residue from causing a barrier from using the Proplex. Rinse and condition as usual.

*We recommend adding Proplex 01. Bonder to toners that will be on longer than 10 minutes.



Balayage

Proplex 01. Bonder for balayage

Note: The use of Proplex in your balayage formula with bleach powdered lightener may make the formula a bit looser. Therefore, you may wish to add additional powder lightener to create the consistency you prefer. This is acceptable. The average formulas are:

For anything less than 30g of powder lightener, add 2ml Proplex 01. Bonder
For 30g-60g of lightener powder, add 3.75ml Proplex 01. Bonder.

Add measured amount of Proplex 01. Bonder to pre-mixed lightener and mix thoroughly.

Note: Choosing to bump (raise) the developer is a personal choice. We have excellent results using Proplex 01. Bonder either way. If you choose to bump the developer:

Bump developer one full level. For a 10vol. (3%) result, use 20vol. (6%) For a 20vol. (6%) result, use 30vol. (9%) For a 30vol. (9%) result, use 40vol. (12%).

You may also use REF Neutral to add some increased lift in your mixture.

Processing time of lightener: This varies. Every head of hair is different. Any resistance to processing time may be solved by bumping your developer, adding REF Neutral to your formula, and/or cutting down the amount of Proplex 01. Bonder.



Bleach/Lightener in foils

Adding Proplex 01. Bonder to powder bleach lightener in foil highlights:

Pay special attention to the scoop size of bleach lightener you are using. Scoop sizes vary per manufacturer. The amount of Proplex 01. Bonder used depends on the amount of bleach lightener being used, not the amount of both developer and bleach lightener combined.*

1. Mix bleach lightener and developer together. Proplex may increase processing time. To avoid this, increase your level of developer. Use 20vol. (6%) when trying to achieve 10vol. (3%) results. 30vol. (9%) for 20vol. (6%) results 40vol. (12%) for 30 vol. (9%) results

For anything less than 30g of bleach lightener, add 3.75ml of Proplex 01. Bonder

For 30g–60g of bleach lightener, add 7.5ml of Proplex 01. Bonder

3. Add Proplex 01. Bonder to your pre-mixed bleach lightener and mix thoroughly.

You may add more bleach lightener or developer if necessary to achieve desired consistency. We recommend remixing a new bowl of bleach lightener and Proplex 01. Bonder if more than 60g of bleach lightener is needed.

Please use the same precautions as you always have when working with any lighteners.

Processing time of bleach lightener:

Time varies.
Every head of hair is different. Any issues with processing time or lift can be solved by bumping (raising) developer and/or using less Proplex 01. Bonder. Some bleach lighteners provide 9+ levels of lift and others only 4, everything may be adjusted based on personal preference.



Perm/Texture Waves

1. Complete a thorough consultation to understand desired end result.
2. Shampoo the hair with a good chelating/de-mineralizing shampoo or REF Weightless Volume Shampoo.
3. If the hair is compromised, lightened, colour-treated or previously permed, take equal amounts of Proplex O2, Perfector and REF Ultimate Repair Masque, mix in a bowl, apply to the towel dried hair. Work it through the highly porous/damaged areas with your fingers. After being applied, have client under warm/hot dryer without a plastic bag (you want the mixture to dry thoroughly into the hair). Be sure it is 100% dried into the hair. Mist client's hair with water and proceed to wrap perm. You can skip this step with normal or virgin hair.
4. After perm is wrapped add 2ml of Proplex O1. Bonder to waving lotion. Apply solution to rods. This will not slow down or hinder the processing time.
5. Test curl immediately to gauge how long to set your timer. Use your professional judgment when determining your test curl intervals as per manufacturer's directions.
6. Once the test curl is fully developed, rinse with warm/hot water as comfortable. Note: You may prefer to blot out the thio chemical from the perm prior to rinsing to reduce some of the perm odor in client's hair.
7. Towel blot thoroughly, then follow up with paper absorbing towels.
8. Neutralize as per manufacturer's instructions. Allow some air resting time between the blotting and applying the neutralizer. With normal hair- leave 5 minutes before applying the neutralizer, fine hair and overly porous hair can rest up to 30 minutes. This allows the softened hair to settle into its new formation and helps with curl resiliency and durability in the end result.
9. Add 2ml of Proplex O1. Bonder to neutralizer.
10. Follow the steps below according to the hair type you are working on (mix the Proplex mixture in a non-spraying applicator bottle)
11. After removing rods, rinse with cool water and give a light shampoo. There is no need for a 48-hour waiting period after doing neutralization with Proplex. As this finishes oxidation, you may shampoo after. We do not recommend using Proplex O2. Perfector due to weight and length of time left on the hair. If you have used Proplex throughout the whole process.
12. Style as usual.

Tinted and highlighted (multi-dimensional): Mix 30ml of Proplex O1. Bondor with 90ml of water (distilled is preferred but not necessary unless you have hard water) apply neutralizer to each rod and immediately apply the Proplex mixture over neutralizer. Time for 5 minutes. Reapply the Proplex mixture and time for an additional 5 minutes. Remove rods and rinse thoroughly.

Tinted: Mix 30ml of Proplex O1. Bondor with 90ml of water (distilled is preferred but not necessary unless you have hard water) apply neutralizer to each rod and immediately apply Proplex mixture

over neutralizer. Time for 10 minutes. Remove rods and rinse thoroughly.

Normal/virgin: 30ml of Proplex O1. Bondor with 90ml of water (distilled is preferred but not necessary unless you have hard water) apply neutralizer to each rod and immediately apply Proplex mixture over neutralizer. Time for 10 minutes. Remove rods and rinse thoroughly.

Please note: The Proplex mixture stays fresh for at least two weeks if capped and it is always good to keep some pre-mixed available to use.



Keratin
treatments

P-18



Keratin treatments and extensions

When performing a keratin service, Proplex Damage Shield treatment is done prior to service.

1. Perform Damage Shield treatment
2. Rinse and clarify per keratin treatment instructions.
3. Apply keratin and proceed as normal.

After Keratin:

Keratin treatments seal the hair. If doing a damage shield treatment after keratin treatment or using Proplex 03. Maintainer regularly, it is best to wait a minimum of 2-3 weeks. This gives the keratin treatment time to dissipate so that Proplex may penetrate and be effective.

Extensions:

Proplex is safe for extensions. Use 02. Perfector sparingly, or be sure to rinse thoroughly after use, as any conditioner may cause slippage.



STOCKHOLM SWEDEN

REF

REF International AB
Linnégatan 78
115 23 Stockholm
Sweden

Swedish HairCare Inc
110 Haverhill Road
Suite 105, Building C
Amesbury, MA 01913
USA

Hair care of Sweden Ltd
Priory Garge, Crossroads
Alcester B49 5EX Warwickshire
England

Luxury Beauty Concepts Pty Ltd
PO Box 6417
58 Octavia Street, St Kilda
3182, Viktoria
Australia

Vanilje Black
Unit E Lauretsford Road Smart
Center, Summerset West 7130
South Africa

Beauty Language
35 Kallang Pudding Road, Tong
Lee Building Block A#04-07
Singapore 409286

+46(0)8 663 19 88
info@refhair.com

refstockholm.com
@refstockholmsweden