

50x10mm HANDRAIL SYSTEM



www.tradeglassdepot.com.au

**TRADE
GLASS
DEPOT**

Trade Glass Depot's handrail solution is exactly what you need: quick, simple, cost effective, and looks great. Our 50x10mm handrail is a modular system that requires no external fabrication: all sections and joins can be glued, tapped or welded depending on application, eliminating site polishing and 95% of rail fabrication time.



RAIL

Stunning welded mirror-finish stainless steel tube in 316 marine grade, available in 6m lengths in a complete, no-fabrication, modular product.



END CAP

End cap plugs are a fast glue-and-go modular fitting that eliminate welded ends and tedious polishing.



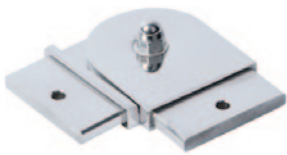
HANDRAIL BRACKETS

Handrail brackets to suit 50x10mm rail, constructed from 316 marine grade stainless steel.



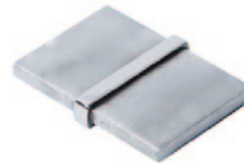
90 DEGREE CORNER

Corner joiners are no-fuss, easy to install, 90 degree corners.



ADJUSTABLE CORNER

The adjustable corner module allows fast and accurate connection of angles and truncated sections of glass.



JOINER

Rail joiner, used to connect continuous lengths of 50x10mm rail.



WALL TIE

Wall tie for 50x10mm rail for fixing to walls and posts at the end of handrail runs.



RETAINING COMPOUND

Retaining compound used to connect the modular system. Simple, easy, effective.

www.tradeglassdepot.com.au

**TRADE
GLASS
DEPOT**

T. 07 3861 9966 | F. 07 3861 9988 | E. sales@tradeglassdepot.com.au | E. 57 Yarraman Place, Virginia QLD 4014