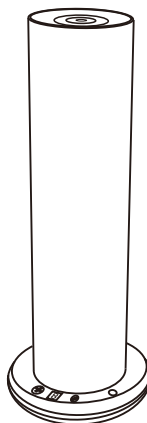


# Bedienungsanleitung STELLAR S

Aroma Diffuser



Scent marketing



Android system



IOS system

If the QR code cannot be scanned, please search for "ScentMarketing" in Google play or APP store.



BT



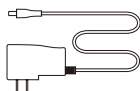
V2.0

## 01 Specification

|              |  |
|--------------|--|
| [ Model ]    | SE8150D  |
| [ Size ]     | 112*112*293mm  |
| [ Bottle ]   | 120ml  |
| [ Input ]    | DC12V == 1A MAX  |
| [ Power ]    | 5W   |
| [ Coverage ] | 50m <sup>2</sup> /150m <sup>3</sup> /5300ft <sup>3</sup> |
| [ N.W. ]     | 1.3 kg   |
| [ Material ] | aluminum   |



Bottle



Power adapter



Manual



Atomizing core

### Note:

Checking and make sure the packaging is complete when you first open it, If any problem please contact with us soon.

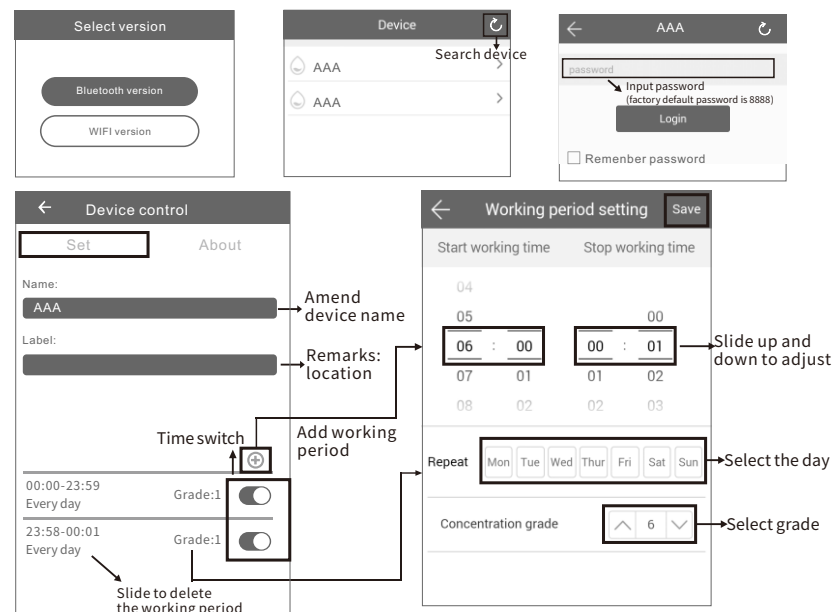
## 02 Bluetooth instruction

### Where to get the app:

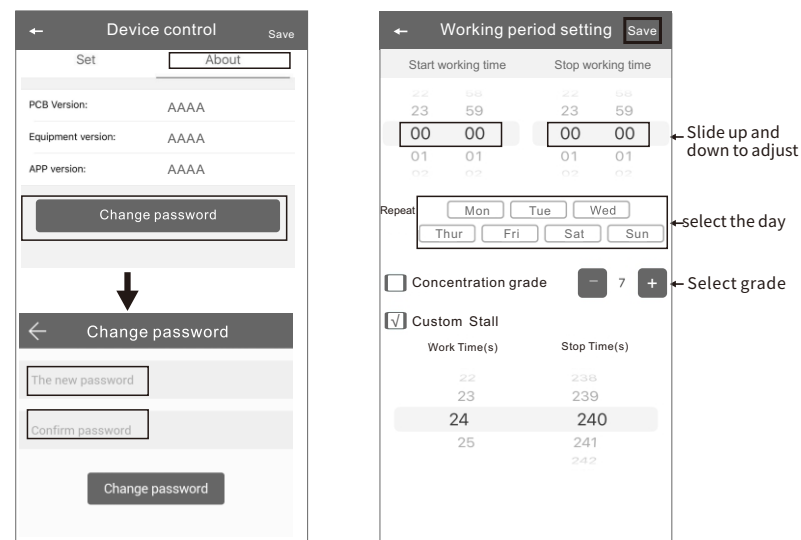
Please search "scent marketing" in Google play or App store .

### Note:

1. Please make sure that the Bluetooth function is turned on;
2. Please make sure that the location function of the mobile phone is turned on.

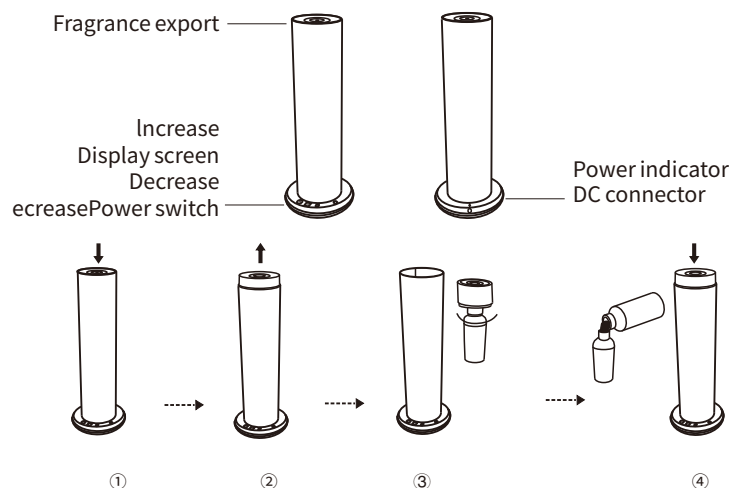


## Amend password



If you forget the password, please press the reset button to restore the factory setting. The factory settings password is 8888.

### 03 Installation step



1. Press on the top cover to open the machine;
2. Take out the top cover with diffusion head and bottle;
3. Unscrew the bottle;
4. Fill the bottle with fragrance.

### 04 Operations

#### power on

Connect with 12V 1A power supply, there is "beep" voice coming out.

#### power off

Press **⏻** to turn off the machine

#### Intensity setting

The machine has 10 intensity levels, Press **⊕** to increase the intensity, press **⊖** to decrease the intensity.

#### Power indicator

↻ indicating the direction of the power supply.

#### Reset Bluetooth App password

press and hold **Ⓜ** for 3 seconds to reset password to 8888.

### 05 Intensity and oil consumption

| Grade      | Work time(s) | Stop time(s) | Consumption(g/h) |
|------------|--------------|--------------|------------------|
| G1         | 5s           | 240s         | 0.03             |
| G2         | 10s          | 220s         | 0.05             |
| G3         | 15s          | 200s         | 0.07             |
| G4         | 15s          | 180s         | 0.11             |
| G5         | 20s          | 160s         | 0.15             |
| G6         | 20s          | 120s         | 0.20             |
| G7         | 25s          | 100s         | 0.25             |
| G8         | 25s          | 80s          | 0.30             |
| G9         | 25s          | 60s          | 0.38             |
| Customized | 5-25s        | 60-600s      | —                |

Note: The data shown above is only for reference, and it is normal for consumption to fluctuate by 15%.

### 06 ⚠ Warning

1. Please keep the machine vertical after installation. Tilting or lying flat can cause oil to overflow, and the circuit board may be contaminated, which could affect its efficiency;
2. Should not modify, dismantle or repair the machine arbitrarily. Any malfunction occurs, please contact the relevant technician immediately.



### 07 Troubleshooting

Before asking to have the machine repaired, please try to diagnose the problem first following to below instructions.

| Breakdown                     | Solution   |
|-------------------------------|--|
| No diffuse                    | - Check if the power is ON or OFF;<br>- The pump is damaged and needs replacing;<br>- If there is no diffusion or it is weak, replace the oil with rubbing alcohol and run it through the machine for 5 minutes.                         |
| Little or no spray coming out | - Atomization head is blocked. Clean diffuser by running rubbing alcohol through it. Or replace diffuser core;<br>- Diffuser core with straw is missing or damaged. Replace with a new one;<br>- Pump is damaged and may need replacing. |
| Diffuser spraying liquid      | - Diffuser core is damaged, Replace diffuser core.<br>- Machine is tilted or angled, Make sure it's upright at all times.  |
| Oil leaking                   | - Bottle is loose. Screw it in properly and straight;<br>- Seal is broken or missing. Replace the supplied seal that came with the machine.  |
| Abnormal sound                | - Pump is loose or damaged, Tighten the pump or replace.   |
| No display on screen          | - Make sure the power is ON;<br>- Check the plug for damage, Try another outlet, If plug is damaged replace;<br>- Display screen is damaged, Replace.  |

### 08 Equipment cleaning

The machine needs to be cleaned when below situations happen:

1. You're about to change to another essential oil;
2. The atomization volume becomes weak.

#### Cleaning steps:

1. Find a clean bottle and fill it with industrial alcohol;
2. Install this bottle to the machine and turn the machine on. Let it work for 5-10 minutes;
3. Turn off the electric, finish the cleaning.