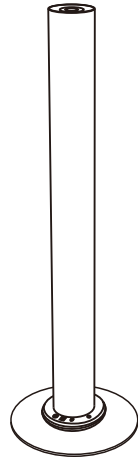


# Bedienungsanleitung STELLAR L

## PRODUCT MANUAL

### Aroma diffuser



Scent marketing



Android system



IOS system

If the QR code cannot be scanned, please search for "Scent Marketing" in Google play or APP store.



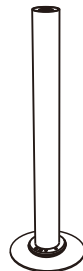
BT



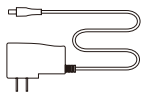
V2.0

## 01 Specification

[ Model ]	SE8150A
[ Size ]	180*180*923mm
[ Bottle ]	120ml
[ Input ]	DC12V = 1A MAX
[ Power ]	4.5W
[ Coverage ]	50m <sup>2</sup> /150m <sup>3</sup> /5300ft <sup>3</sup>
[ N.W. ]	3 kg
[ Material ]	aluminum



Bottle



Power adapter



Manual

### Note:

Checking and make sure the packaging is complete when you first open it, If any problem please contact with us soon.

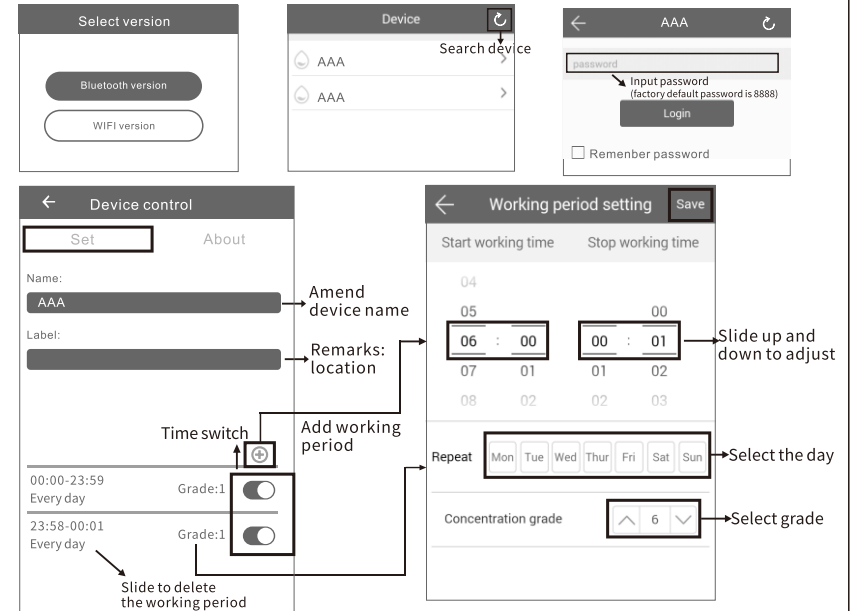
## 02 Bluetooth instruction

### Where to get the app:

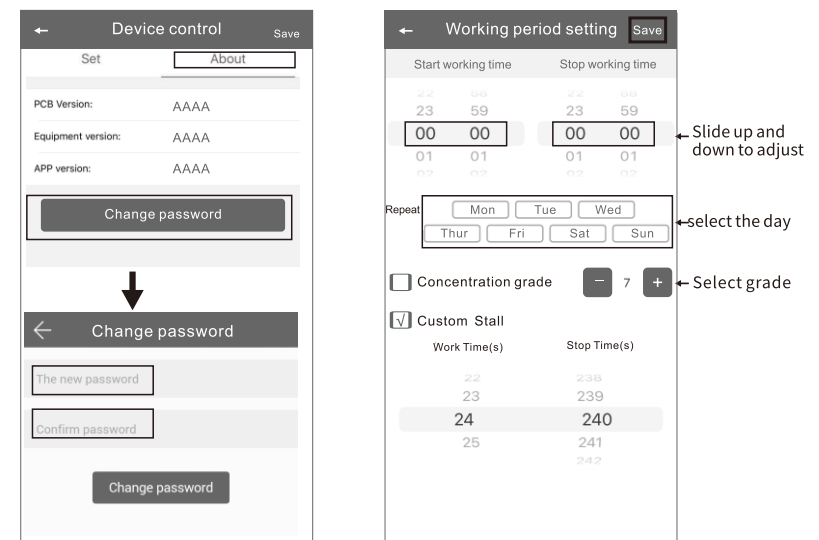
Please search "scent marketing" in Google play or App store .

### Note:

1. Please make sure that the Bluetooth function is turned on;
2. Please make sure that the location function of the mobile phone is turned on.

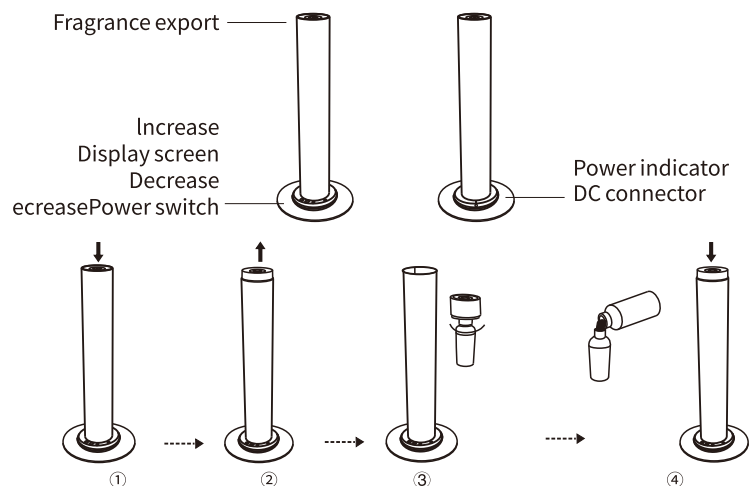


## Amend password



If you forget the password, please press the reset button to restore the factory setting. The factory settings password is 8888.

### 03 Installation Step



1. Press on the top cover to open the machine;
2. Take out the top cover with diffusion head and bottle;
3. Unscrew the bottle;
4. Fill the bottle with fragrance.

### 04 Operations

#### power on

Connect with 12V 1A power supply, there is "beep" voice coming out.

#### power off

Press to turn off the machine

#### Intensity setting

The machine has 10 intensity levels, Press to increase the intensity, press to decrease the intensity.

#### Power indicator

indicating the direction of the power supply.

#### Reset Bluetooth App password

press and hold for 3 seconds to reset password to 8888.

### 05 Intensity and oil consumption

Grade	Work time(s)	Stop time(s)	Consumption(g/h)
G1	5s	240s	0.03
G2	10s	220s	0.05
G3	15s	200s	0.07
G4	15s	180s	0.11
G5	20s	160s	0.15
G6	20s	120s	0.20
G7	25s	100s	0.25
G8	25s	80s	0.30
G9	25s	60s	0.38
Customized	5-25s	60-600s	—

Note: The data shown above is only for reference, and it is normal for consumption to fluctuate by 15%.

### 06 ⚠ Warning

1. Please keep the machine vertical after installation. Tilting or lying flat can cause oil to overflow, and the circuit board may be contaminated, which could affect its efficiency;
2. Should not modify, dismantle or repair the machine arbitrarily. Any malfunction occurs, please contact the relevant technician immediately.



### 07 Troubleshooting

Before asking to have the machine repaired, please try to diagnose the problem first following the below instructions.

Breakdown	Solution
No diffuse	- Check if the power is ON or OFF; - The pump is damaged and needs replacing; - If there is no diffusion or it is weak, replace the oil with rubbing alcohol and run it through the machine for 5 minutes.
Little or no spray coming out	- Atomization head is blocked. Clean diffuser by running rubbing alcohol through it. Or replace diffuser core; - Diffuser core with straw is missing or damaged. Replace with a new one; - Pump is damaged and may need replacing.
Diffuser spraying liquid	- Diffuser core is damaged, Replace diffuser core. - Machine is tilted or angled, Make sure it's upright at all times.
Oil leaking	- Bottle is loose. Screw it in properly and straight; - Seal is broken or missing. Replace the supplied seal that came with the machine.
Abnormal sound	- Pump is loose or damaged, Tighten the pump or replace.
No display on screen	- Make sure the power is ON; - Check the plug for damage, Try another outlet, If plug is damaged replace; - Display screen is damaged, Replace.

### 08 Equipment cleaning

The machine needs to be cleaned when below situations happen:

1. You're about to change to another essential oil;
2. The atomization volume becomes weak.

#### Cleaning steps:

1. Find a clean bottle and fill it with industrial alcohol;
2. Install this bottle to the machine and turn the machine on. Let it work for 5-10 minutes;
3. Turn off the electric, finish the cleaning.