

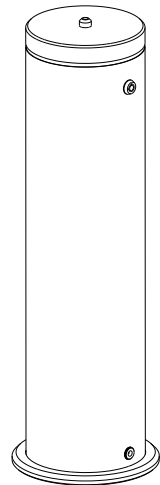
# Bedienungsanleitung SCENTA

## PRODUCT MANUAL

### Aroma diffuser

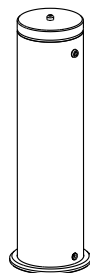


If the QR code cannot be scanned, please search for "Scent Marketing" in Google playor APP store.



## 01 Specification

- [ Model ] A301C
- [ Size ] Ø148\*473 mm
- [ Bottle ] 1000ml
- [ Input ] DC 12V== 1A MAX
- [ Power ] 5W
- [ Coverage ] 400m<sup>2</sup>/1200m<sup>3</sup>/42500ft<sup>3</sup>
- [ N.W. ] 03.1kg
- [ Material ] aluminum



#### PTFE tape:

- 1.Tie up/ twine the atomized core when change a new one to machine;
- 2.Twine connector screwing to machine.

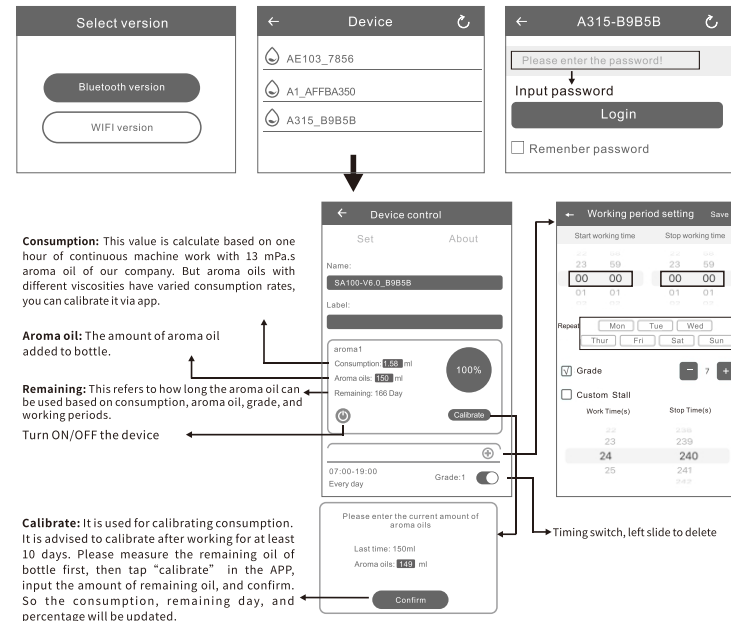
## 02 Bluetooth instruction

#### Where to get the app:

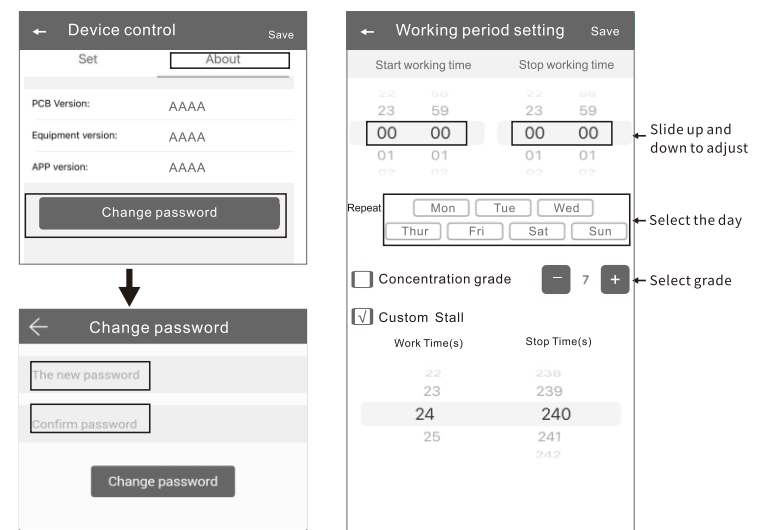
Please search for "scent marketing" in Google play or App store.

#### Note:

- 1.Please make sure that the Bluetooth function is turned on;
- 2.Please make sure that the location function of the mobile phone is turned on.



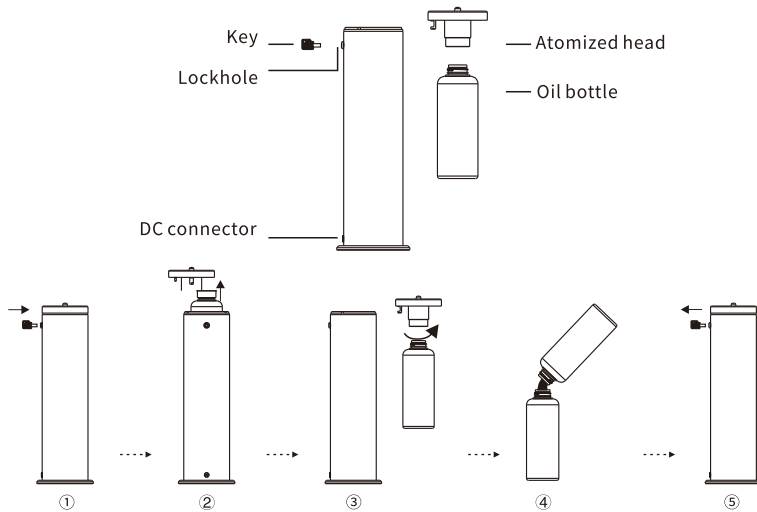
## Amend password



If you forget the password, please press the reset button to restore the factory setting. The factory settings password is 8888.

### 03 Installation Steps

Application : Hotel, conference hall, lobby, bar, SPA, etc.



1. Unlock the machine;
2. Take out the Atomized head with bottle;
3. Unscrew the oil bottle;
4. Adding the oil;
5. Install the bottle with atomized head, and lock the machine.

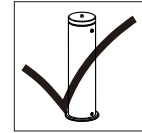
### 04 Concentration and consumption

Grade	Work time(s)	Stop time(s)	Consumption(g/h)
G1	15s	300s	0.30
G2	15s	150s	0.40
G3	20s	120s	0.50
G4	20s	85s	0.60
G5	25s	80s	0.70
G6	30s	75s	0.80
G7	30s	60s	0.90
G8	30s	50s	1.00
G9	30s	40s	1.10
G10	30s	33s	1.20
G11	33s	30s	1.28
G12	40s	30s	1.36
G13	50s	30s	1.44
G14	60s	30s	1.52
G15	75s	30s	1.60
G16	80s	25s	1.68
G17	85s	20s	1.76
G18	120s	20s	1.84
G19	150s	15s	1.92
G20	300s	15s	2.00
Customized	5-500s	5-500s	----

- Note:** 1. Above date is base on testing oil in laboratory;  
2. Above data is for reference only. The consumption of different oil may be different.

### 05 ⚠ Warning

1. Please keep the machine vertical after installation. Tilting or lying flat can cause oil to overflow, and the circuit board may be contaminated, which could affect its efficiency;
2. Should not modify, dismantle or repair the machine arbitrarily. Any malfunction occurs, please contact the relevant technician immediately.



### 06 Troubleshooting

Before asking to have the machine repaired, please try to diagnose the problem first following to bellow instructions.

Breakdown	Solution
Does not diffuse	-Check whether the mode you choose is correct or not. -Check if the machine is during "Non-Working period" -Air pump may be damaged, change a new one. -Check whether the tube is loose or not
Low diffuse	-The atomizing core is blocked, clean by alcohol or change a new component. -Check whether the gasket is damage/loose or not. -Check whether the tube is loose or not
Oil spill	-Check whether the bottle is loose or not -The gasket in the atomized head is damaged or loose.
Oil sprinkle	-The atomized head is damaged, change a new one -The machine is tilled or lie down, keep the machine vertical.
Abnormal noise	-The air pump is loose, retighten the pump -The air pump is damaged, change a new one.

### 07 Equipment cleaning

**The machine needs to be cleaned when below situations happen:**

1. You're about to change to another kind of essential oil;
2. The atomization volume becomes weak.

**Cleaning steps:**

1. Pull out the atomized head, loose the bottle.
2. Find a larger container and fill the industrial alcohol up, then soak the atomized head and the bottle for 5-10mins.
3. Airing the atomized head and the bottle.