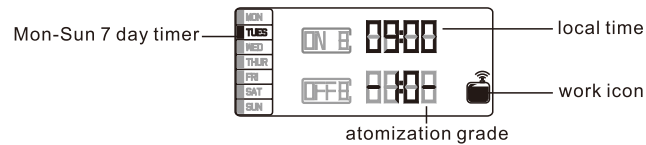


## TIME SETTING



### Power on

Connect with 12V 1A power supply, short "beep" –power-on voice comes out, the screen displays local time and atomization grade.

### Power off

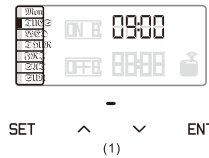
Disconnect power supply, no display on panel.

### Lock & unlock

Screen will be locked automatically and no display in 10 seconds if there is no operation; Touch **SET** about 5 seconds the machine will turn to unlock and display lights on.

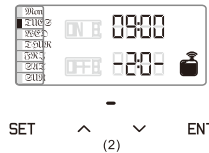
### Local time setting

Press **SET** button for 3 seconds until you hear a beep to enter local time setting menu. Press **▼** or **▲** button to choose the correct day. Then press **ENT** button to move to local time setting. Press **▼** or **▲** button to change the number. Press **ENT** button to move to another position. Press **SET** to confirm (Figure 1).



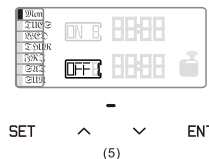
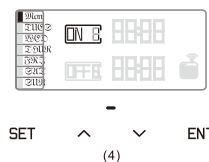
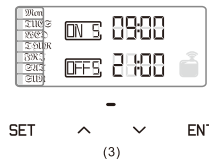
### Grade setting

The diffuser total has 20 fragrance intensity grades, press **▲**, the intensity will increase, press **▼**, the intensity will decrease(Figure 2).



### Diffusion time setting

There are 5 working periods available to be set for the machine(Figure3). Press button **SET** go to set the first working period (ON1 & OFF1). Press **▲** or **▼** button to adjust the number. Press button **ENT** move to next setting position. Once the first working period (ON1&OFF1) is set, we can choose it works on which day of a week. Press **ENT** move to MON position then press **▲** to turn on the working period (Under ON1) (Figure4) or press **▼** to turn off the working period (Under OFF1)(Figure5); press ENT move to next day and setting way is same as MON. Press button **SET** and follow above steps set period 2, 3, 4, 5 and after period 5 touch **SET** again to confirm and exist the setting.

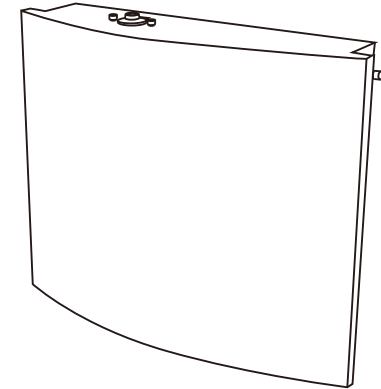


Available working period	00:00 - 00:00	00:00 - 00:00	00:00 - 00:00	00:00 - 00:00	00:00 - 00:00
Mon	ON/OFF	ON/OFF	ON/OFF	ON/OFF	ON/OFF
Tues	ON/OFF	ON/OFF	ON/OFF	ON/OFF	ON/OFF
Wed	ON/OFF	ON/OFF	ON/OFF	ON/OFF	ON/OFF
Thur	ON/OFF	ON/OFF	ON/OFF	ON/OFF	ON/OFF
Fri	ON/OFF	ON/OFF	ON/OFF	ON/OFF	ON/OFF
Sat	ON/OFF	ON/OFF	ON/OFF	ON/OFF	ON/OFF
Sun	ON/OFF	ON/OFF	ON/OFF	ON/OFF	ON/OFF

(PS: The first working period is factory defaults with working at 07:00 and stop working at 21:00 for every day, the rest are all with 00:00)

# Bedienungsanleitung PRESTIGE

## SCENT DELIVERY SYSTEM



## CONCENTRATION AND CONSUMPTION

Grade	Working(s)	Stop(s)	Consume(ml/h)
G1	15s	300s	0.15
G2	15s	150s	0.30
G3	20s	120s	0.46
G4	20s	85s	0.61
G5	25s	80s	0.75
G6	30s	75s	0.91
G7	30s	60s	1.05
G8	30s	50s	1.21
G9	30s	40s	1.36
G10	30s	33s	1.51
G11	33s	30s	1.66
G12	40s	30s	1.81
G13	50s	30s	1.96
G14	60s	30s	2.11
G15	75s	30s	2.25
G16	80s	25s	2.41
G17	85s	20s	2.55
G18	120s	20s	2.71
G19	150s	15s	2.86
G20	300s	15s	3.02

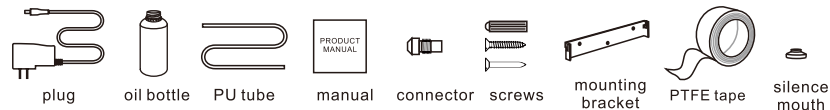
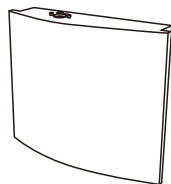
Using an UP ▲ and DOWN ▼ allows you to adjust the scent intensity.

Note: 1. The above data is based on using aroma oil.

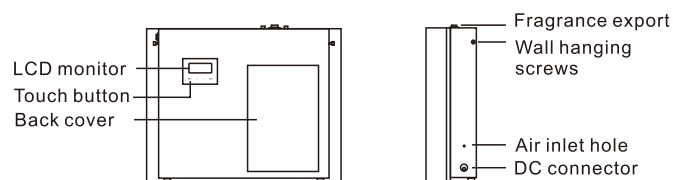
2. Using other type of oil may have an effect on the consumption rate.

## OVERVIEW

- [ Model ] SE6400D
- [ Dimension ] 356\*295\*96mm
- [ Machine N.W. ] 5.0kg
- [ Voltage ] Input: AC100V-240V 50/60Hz  
Output: DC12V 1A
- [ Power ] 6W
- [ Coverage ] 500m<sup>2</sup>/1,500m<sup>3</sup>/53,000ft<sup>3</sup>
- [ Bottle capacity ] 500ml



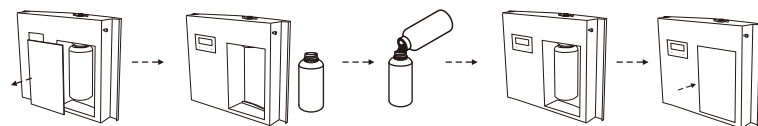
Checking and make sure the packaging is complete when you first open it, if any problem please contact with us soon.



## DIRECTION

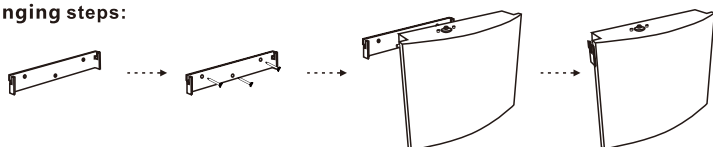
Application places: Hotel, Meeting Room, Mall, Exhibition Hall, Brand retail store, Bar, SPA, Business Places or somewhere you want fragrance experience.

### Refill oil steps:



1. Open the cover.
2. Rotate and take off the bottle from the atomizing head.
3. Fill the fragrance in the bottle.
4. Screw on the machine carefully.
5. Close the cover.

### Hanging steps:



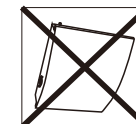
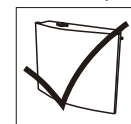
1. Choose a position.
2. Fasten the mounting bracket with nails.
3. Hang the machine.
4. Done.

## CAUTION

- Shall not modify, disassemble or repair the machine arbitrarily. Any failure happens, please contact relevant technician in time.
- Shall not damage the power cord, force to bend, yank, heavy load, clip or reprocess.
  - Shall not use the AC plug when it is damaged or un-matched with the socket;
  - Shall not wet the machine or the AC plug;
  - Shall not use overloaden power socket, wire or broken plug.
- Shall not touch the wire or product shell when thundering or/and lightning.
- Shall not disassemble the machine when it is under operating.

### Warning:

- Atomization icon display on screen but the machine would not diffuse when it stays on pause time.
- Touch/ Tap icons will not operate when Diffuser is in lock status.
- Display screen not functioning normally, displays unclear or program crash. Reset Diffuser; touch "ENT" (5 seconds) until "beep"
- Diffuser must be vertical at all times when fragrance is in bottle. When lying flat, tilted or horizontal the fragrance could overflow. This may effect Diffuser efficiency if circuit board or pump is contaminated.
- After installation, please keep the machine vertical. Tilting or placing it flat may cause an oil overflow. The machine efficiency may be affected if the circuit board is contaminated.



## TROUBLESHOOTING

Before asking to have the machine repaired, please try to diagnose the problem first following to bellow instructions.

Symptom	Remedy
Does not diffuse	-Check the power is on or off ; -If the machine is in "not working period", it stops diffuse; -The pump is damaged, change a new one.
Spray little	-Atomized nozzle may be blocked, diffuse with alcohol to do cleaning ; -Pump is aging, change a new one.
Spray liquid	-Atomized nozzle is damaged, change a new one; -Machine is tilted or lay flat, please make it stand onend.
Oil spill	-Bottle is loose, screw it to the right place.
Abnormal sound	-Pump is loose, install it correctly.
No display on screen	-The power is off; -Plugs is damaged, change a new plug ; -Display screen is damaged, change a new one.

### CLEANING DIFFUSER

Diffuser should be cleaned regularly, timing recommendations below:

1. Refilling / changing fragrance in reservoir.
2. Scenting strength becomes weak.

- Turn off Scenting Diffuser before cleaning.
- Place clean bottle with small quantity of "Methylated Spirits" / Industrial alcohol.
- Turn on Machine and let diffuse for 5 minutes
- Turn off power and unscrew cleaning fluid bottle.
- Replace with fresh fragrance, machine is now ready for diffusing