

Bedienungsanleitung LUXOR

50301-00623

Instructions

Where to get the app:

Please search "scent marketing" in Google play or App store and you will find it.



Note:

1. Please make sure that the Bluetooth function is turned on;
2. Please make sure that the location function of the mobile phone is turned on.

Device + Add device

Device Setting Save

Setting About

Name: AAA → Amend device name

Label: AAAAAA → Remarks: location

Delete working period X

07:00-21:00 Grade: 09 → Add working period

Mon Tue Wed Thur Fri Sat Sun → Time switch

(PS: There are 5 working periods available.)

After adjusting grade, please save it BEFORE going back to the home page.

Amend password

Device control

Set About

PCB Version: AAAA

Equipment version: AAAA

APP version: AAAA

Change password

Change password

The new password

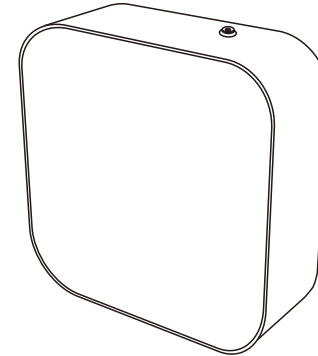
Confirm password

Change password

If you forget the password, please press the reset button to restore the factory settings. The factory settings password is 8888.

PRODUCT MANUAL

SCENT DELIVERY SYSTEM



SE005B-APP

CONCENTRATION AND CONSUMPTION

Grade	Consume(g/h)	Concentration	
	SE005B 480ml bottle	Working(s)	Stop(s)
G1	0.003	15s	300s
G2	0.011	15s	150s
G3	0.081	20s	120s
G4	0.125	20s	85s
G5	0.190	25s	80s
G6	0.241	30s	75s
G7	0.260	30s	60s
G8	0.268	30s	50s
G9	0.286	30s	40s
G10	0.310	30s	33s
G11	0.335	33s	30s
G12	0.346	40s	30s
G13	0.376	50s	30s
G14	0.395	60s	30s
G15	0.411	75s	30s
G16	0.415	80s	25s
G17	0.468	85s	20s
G18	0.585	120s	20s
G19	0.646	150s	15s
G20	0.911	300s	15s

Using an UP ▲ and DOWN ▼ allows you to adjust the scent intensity.
 Note: 1. The above data is based on using aroma oil.
 2. Using other type of oil may have an effect on the consumption rate.

Working period setting Save

Start working time Stop working time

04

05 : 00 00 : 01 → Slide up and down to adjust

07 01 01 02

08 02 02 03

Repeat Mon Tue Wed Thur Fri Sat Sun → Select the day

Concentration grade ^ 6 v → Select grade

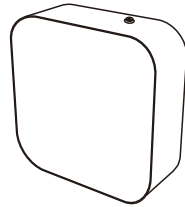
Customized CustomStall

Work Time(S)	Stop Time(S)
14	24
15	25
16	26

Please slide here to adjust working and pause seconds

OVERVIEW

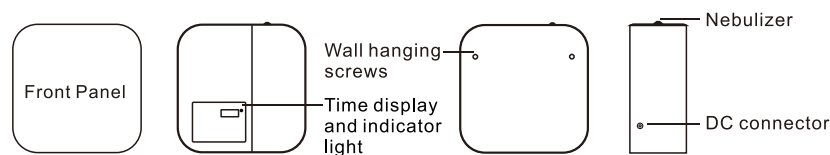
【 Model 】	SE005B
【 Machine N.W. 】	2.58kg
【 Dimension 】	205 x 205 x 88 mm
【 Voltage 】	Input: AC100V~240V 50/60Hz Output: DC12V 1A Cable length: 130cm
【 Power 】	6W
【 Coverage 】	150m ² /450m ³ /21,150ft ³
【 Bottle capacity 】	480ml



Accessories



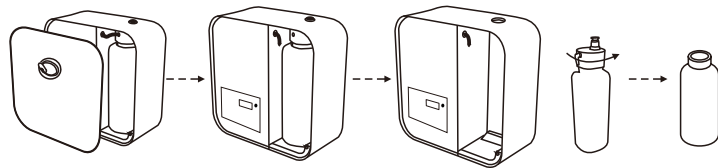
Checking and make sure the packaging is complete when you first open it, if any problem please contact with us soon.



DIRECTION

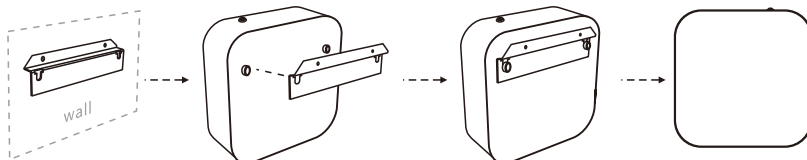
Application places: Hotel, Meeting Room, Mall, Exhibition Hall, Brand retail store, Bar, SPA, Business Places or somewhere you want fragrance experience.

Bottle installation steps:



1. Use the sucker take off the front cover.
2. Take off the air tube on the atomizing head.
3. Hold the bottle lower part and pull out the atomizer head and bottle slowly and carefully. (Note: both atomizing head and bottle will separate from the machine)
4. Unscrew the bottle and fill the fragrance.

Hanging steps:



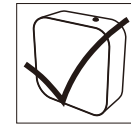
Use screws fix the mounting bracket on the wall first, finally hanging the machine on the bracket.

CAUTION

- Shall not modify, disassemble or repair the machine arbitrarily. Any failure happens, please contact relevant technician in time.
- Shall not damage the power cord, force to bend, yank, heavy load, clip or reprocess.
 - Shall not use the AC plug when it is damaged or un-matched with the socket;
 - Shall not wet the machine or the AC plug;
 - Shall not use overloaded power socket, wire or broken plug.
- Shall not touch the wire or product shell when thundering or/and lightning.
- Shall not disassemble the machine when it is under operating.

Warning:

- Atomization icon display on screen but the machine would not diffuse when it stays on pause time.
- Touch/ Tap icons will not operate when Diffuser is in lock status.
- Display screen not functioning normally, displays unclear or program crash. Reset Diffuser; touch "ENT" (5 seconds) until "beep"
- Diffuser must be vertical at all times when fragrance is in bottle. When lying flat, tilted or horizontal the fragrance could overflow. This may effect Diffuser efficiency if circuit board or pump is contaminated.
- After installation, please keep the machine vertical. Tilting or placing it flat may cause an oil overflow. The machine efficiency may be affected if the circuit board is contaminated.



TROUBLESHOOTING

Before asking to have the machine repaired, please try to diagnose the problem first following to bellow instructions.

Symptom	Remedy
Does not diffuse	-Check the power is on or off ; -If the machine is in "not working period", it stops diffuse; -The pump is damaged, change a new one.
Spray little	-Atomized nozzle may be blocked, diffuse with alcohol to do cleaning ; -Pump is aging, change a new one.
Spray liquid	-Atomized nozzle is damaged, change a new one; -Machine is tilted or lay flat, please make it stand onend.
Oil spill	-Bottle is loose, screw it to the right place.
Abnormal sound	-Pump is loose, install it correctly.
No display on screen	-The power is off; -Plugs is damaged, change a new plug ; -Display screen is damaged, change a new one.

CLEANING DIFFUSER

Diffuser should be cleaned regularly, timing recommendations below:

1. Refilling / changing fragrance in reservoir.
2. Scenting strength becomes weak.

- Turn off Scenting Diffuser before cleaning.
- Place clean bottle with small quantity of "Methylated Spirits" / Industrial alcohol.
- Turn on Machine and let diffuse for 5 minutes
- Turn off power and unscrew cleaning fluid bottle.
- Replace with fresh fragrance, machine is now ready for diffusing