

# Instructions

## Where to get the app:

Please search "scent marketing" in Google play or App store and you will find it.



## Note:

1. Please make sure that the Bluetooth function is turned on;
2. Please make sure that the location function of the mobile phone is turned on.

Device + Add device

A501 >

A501 >

Device Setting Save

Setting About

50% Essential oil: 500ml Remaining: 250ml

Name: Maximum 16 chara... Amend device name

A501

Label: Remarks: location

Delete working period X + Add working period

07:00-21:00 Grade: 09 Time switch

Mon Tue Wed Thur Fri Sat Sun

23:58-00:01 Grade: 01

Mon Tue Wed Thur Fri Sat Sun

Input password

Login

(PS: There are 5 working periods available to be set.)

## Amend password

Device control Save

Set About

PCB Version: A501\_V2.00

Equipment version: A501\_V2.00

APP version: 1\_V2.00

Change password APP Upgrade

Change password

The new password

Confirm password

Change password

Working period setting Save

Start working time Stop working time

04

05 : 00

06 : 00

07 01

08 02

02 03

00 01

01 02

Slide up and down to adjust

Repeat Mon Tue Wed Thur Fri Sat Sun Select the day

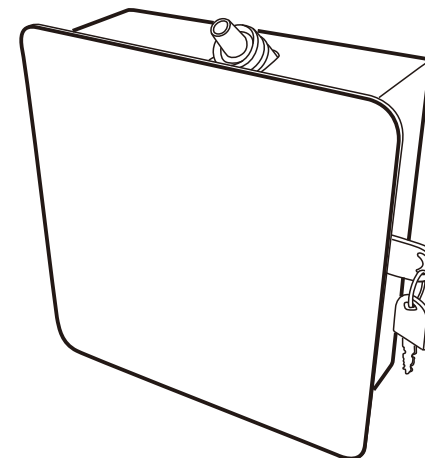
Concentration grade 6 Select grade (1-10grade)

If you forget the password, please press the reset button to restore the factory settings. The factory settings password is 8888.

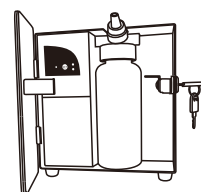
# Bedienungsanleitung

# AERO

SCENT MARKETING



## Reminding



Bluetooth indicator:  
As usual, the bluetooth indicator is powered off. After connecting successfully and it will be flashing for reminder.

Battery indicator:  
When it lights for 30s stands for full charged, 5s flashing stands for low power and when it always lights, this machine will stop working.

## Concentration and Consumption

Grade	G1	G2	G3	G4	G5
Intervals ( min )	15	13.5	12	10.5	9

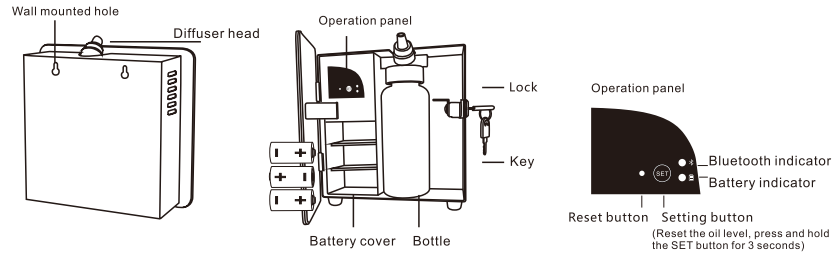
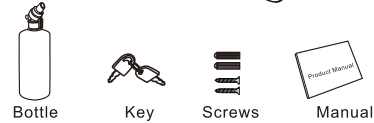
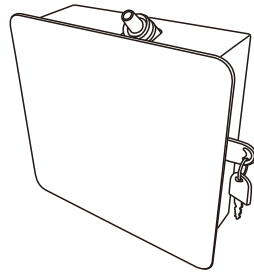
Grade	G6	G7	G8	G9	G10
Intervals ( min )	7.5	6	4.5	3	1.5

### Notes:

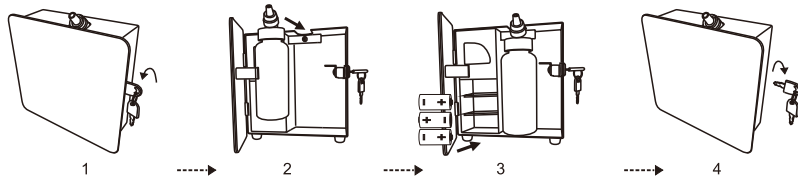
1. 500ml oils can diffuse 11000-12500 times under normal circumstances.
2. All of the above grade atomization work time is 3 seconds.
3. Different grade and oil may with different consumption.

## Specification

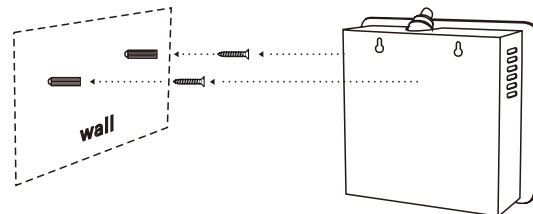
- [ Product ] : A501
- [ Size ] : 236\*77\*240mm
- [ Volume ] : 480ml
- [ Weight ] : 2.2kg
- [ Coverage ] : 450m<sup>3</sup>
- [ Power ] : Battery(3\*1.5V)  
& DC 12V



## Installation



1. Insert the key, twirl anticlockwise to unlock the door.
  2. Tightly connect the atomizer head and the fragrance bottle, and install them to the machine.
  3. Install the batteries according to the positive and negative terminals.
- Note: 1. When the unit is connected by DC 12V adapter, the batteries stop supplying power, disconnect the DC 12V connection, the batteries start to supplying power.  
2. After installing new batteries, the unit will work after 25s.
4. Insert the key and twirl clockwise to lock the door.

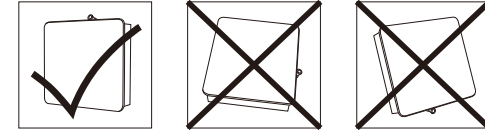


The distance of the screw hole

100mm

## Warning

1. Please keep the machine vertical. Tilt or lie flatly may cause oil overflow. The machine efficiency may be affected.



2. Shall not modify, disassemble or repair the machine. If any failure happens to the machine, please contact our technical personnel.

## Equipment cleaning

The machine needs to be cleaned when below situations happen:

1. You're about to change to another kind of essential oil.
2. The atomization volume becomes weak.

**Cleaning steps:**

1. Pull out the atomized head, loose the bottle.
2. Find a larger container and fill the industrial alcohol up, then soak the atomized head and the bottle for 5-10mins.
3. Airing the atomized head and the bottle.

**Note:**

1. After cleaning the device, turn on the unit, press and hold SET button for 3 seconds to reset remaining oil level.
2. After spraying 3 seconds, the unit will stop 2 seconds, then it will spray 50 milliseconds for clearing the remaining oil in the atomizer head, it is normal.

## Troubleshooting

Before asking to have the machine repaired, please try to diagnose the problem first following to below instructions.

Symptom	Remedy
Does not diffuse	<ul style="list-style-type: none"> <li>- Check whether the batteries are loose or in low battery situation.</li> <li>- If the machine is in "not working period", it stops diffuse.</li> <li>- Check whether the air pump is normal or not.</li> <li>- Check whether the gasket is damaged/loose or not.</li> </ul>
Spray little	<ul style="list-style-type: none"> <li>- Check whether the gasket is damaged.</li> <li>- Check whether the atomized core is plugged or not.</li> <li>- Check whether the cap of the atomized head is loose or.</li> </ul>
Oil spill	<ul style="list-style-type: none"> <li>- Whether the atomized head is damaged or not.</li> </ul>
Abnormal sound	<ul style="list-style-type: none"> <li>- Pump is loose, install it correctly.</li> <li>- The pump is damaged, change a new one.</li> </ul>