

LED 12VDC Class 2 MAGNETIC DIMMABLE 30W POWER SUPPLY
by **GM Lighting**

Project: _____
 Type: _____
 Location: _____
 Contact Phone: _____

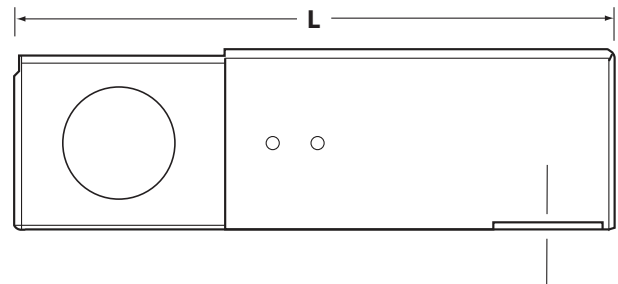
PRODUCT DESCRIPTION

Smallest dimmable Class 2 hardwire LED dimming magnetic power supply on the market that works with conventional low voltage magnetic wall mount dimmer with on/off switch. Features include compact size, high efficiency and excellent load regulation and no wattage de-rating under 100% load. There is no minimum load requirement for this transformer/driver. (Recommended loading 40-80% for optimal performance.)

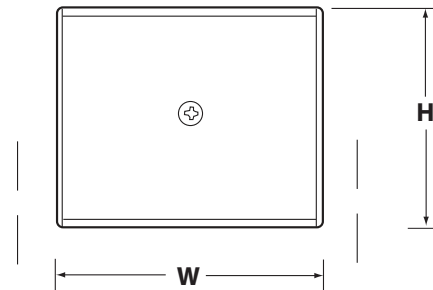


PRODUCT SPECIFICATIONS

Construction: Transformer is encapsulated in all metal construction enclosure. Enclosure temperature should not exceed 70°C (158°F) @ 40°C (104°F) ambient. Wiring compartment has 2 knockouts sized for 3/4" screw cable conductors. Removable cover for wiring compartment is se-cured in place by clips and one screw. Black powder coated.



Electrical: Input and output terminals are terminal block. Input leads are 20 AWG. Output leads are 16 AWG. Lead insulation rated to 105°C (221°F). Transformer utilizes a class B 130°C (266°F) insulation system. Maximum load is 30W. Coil former is double section bobbin. Auto reset.



Dimming: Works with low-voltage magnetic wall dimmer with on/off switch.

Mounting: Surface mount with front mounting tab.

Warranty: 5 years.

Label: ETL listed for indoor and outdoor use.



Catalog Number	Max. Wattage	Input Voltage	Output Voltage	Weight	Dimensions		
					L	W	H
LTHM30-DIM	30W	120V/60Hz	12VDC	2.0 lb.	7.5"	2.125"	1.75"

For voltage drop - see www.gmlighting.net/voltagedrop.html or consult GM Lighting Product catalog, page 19.



GM Lighting, LLC • 9830 W. 190th St. • Unit F • Mokena, IL 60448
 Toll-Free: (866) 671-0811 FAX: (708) 478-2640 • www.gmlighting.net
 e-mail: sales@gmlighting.net • Specifications subject to change without notice.
 LTHM30-DIM_100312