

LED-CHL-XD-MD-F

PRODUCT DESCRIPTION

GM Lighting's LED-CHL-XD-MD and MD-F channels accepts all GM Lighting LED tape*. Available in 48" and 96" lengths, these mounting channels are the perfect vessel that not only insures an architectural quality installation, but also provides diode-free imaging due to the frosted lens that is included with each channel.

Available with or without flange (see spec sheet LED-CHL-XD-MD for non-flanged option ordering information).

FOR LTR SERIES TAPE

LTR-P, LTR-S and LTR-E - DRY LOCATION ONLY

EXISTING TAPE

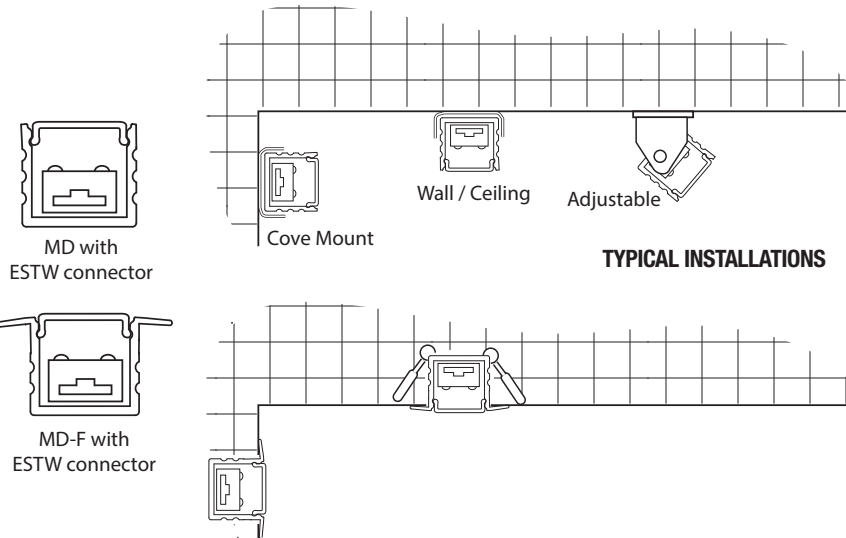
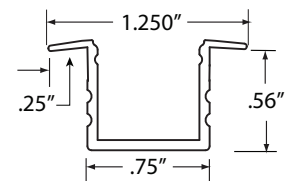
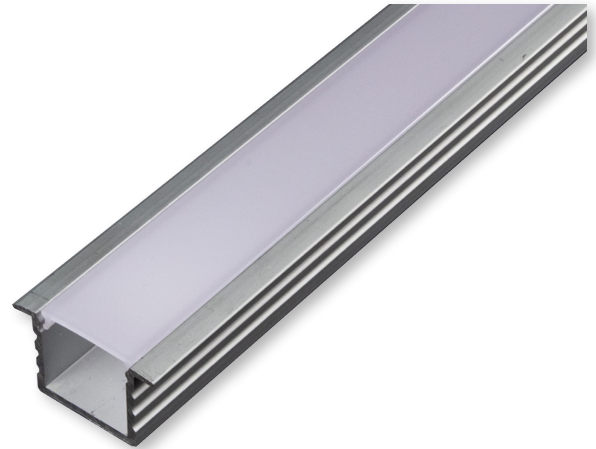
Not Vision120 or LTR-1200

Custom lengths available - consult factory

FEATURES

- Includes 2 mounting clips and screws
- Includes acrylic frosted lens
- End caps sold seperately

PROJECT	TYPE
CATALOG NUMBER	



ORDERING INFORMATION

Model Number	Description	Length	Width	Depth	Finish
LED-CHL-XD-MD-F	Mini-deep flanged extruded channel. Includes snap-on lens.	48"	1.250"	.56"	Brushed Aluminum
LED-CHL-XD-MD-F-8	Mini-deep flanged extruded channel. Includes snap-on lens.	96"	1.250"	.56"	Brushed Aluminum
LED-CHL-XD-MD-F-DC	(2) Drywall spring clips with mounting screws				Stainless Steel
LED-CHL-XD-MD-F-EC	(2) End caps - one solid, one with wiring hole				Grey

TAPE / CONNECTOR COMPATIBILITY

Catalog No.	Length	Fits These Connectors	For LED Tape Series	Mill Dimensions
LED-CHL-XD-MD-F	48"	Sure-Tite and EZ Connectors	LTR-P, LTR-S, LTR-E Series Dry Location Only	.75" x .56"
LED-CHL-XD-MD-F-8	96"	Sure-Tite and EZ Connectors	Not Vision120 or LTR-1200 Series	.75" x .56"

Please check our website at www.gmlighting.net for new additions to our line of architectural mounting extrusions.