

**LED-CHL-XD-F**

PROJECT	TYPE
CATALOG NUMBER	

**PRODUCT DESCRIPTION**

Extruded aluminum extra deep, flanged surface and recessed channel with snap-in frosted glossy lens that provides a rigid, deep set linear mounting platform for the all GM Lighting LED linear tape. Channel creates a diode free light source. Fits the following GM tape:

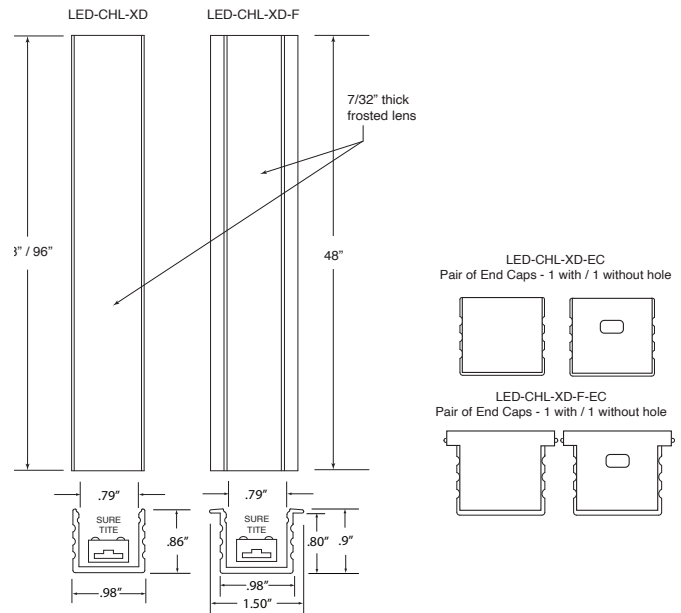
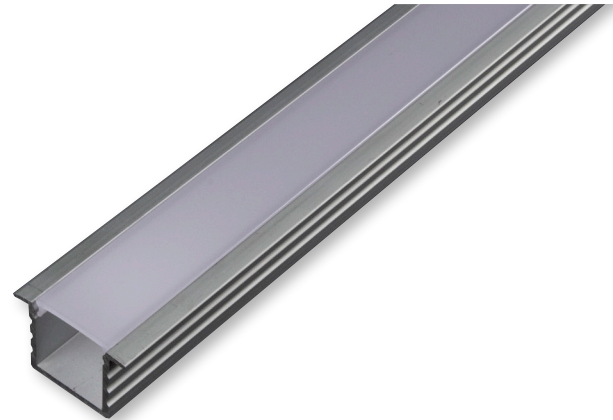
**FOR LTR SERIES TAPE**

**LTR-P, LTR-S and LTR-E - DRY and WET LOCATION**

**ALL EXISTING LED TAPE SERIES**

**FEATURES**

- Includes 2 mounting clips and screws
- Includes acrylic frosted lens
- End caps sold separately



Diagrams shown with and without flange.  
For un-flanged version, see LED-CHL-XD spec sheet.

**ORDERING INFORMATION**

Model Number	Description	Length	Width	Depth	Finish
LED-CHL-XD-F	Extra deep extruded aluminum channel	48"	1.5	.9"	Brushed Aluminum
LED-CHL-XD-F-DC	(2) Drywall mounting brackets				Stainless
LED-CHL-XD-F-EC	(2) End caps - one solid, one with hole				Grey
LED-CHL-XD-MC	(2) Additional mounting clips				Aluminum

**TAPE / CONNECTOR COMPATIBILITY**

Catalog No.	Length	Fits These Connectors	For LED Tape Series	Mill Dimensions
LED-CHL-XD-F	48"	Sure-Tite and EZ Connectors	LTR-P, LTR-S, LTR-E Series Dry and Wet Location	.98" x .9"
LED-CHL-XD-F-8	96"	Sure-Tite and EZ Connectors	All Existing Tape Series	.98" x .9"

Please check our website at [www.gmlighting.net](http://www.gmlighting.net) for new additions to our line of architectural mounting extrusions.