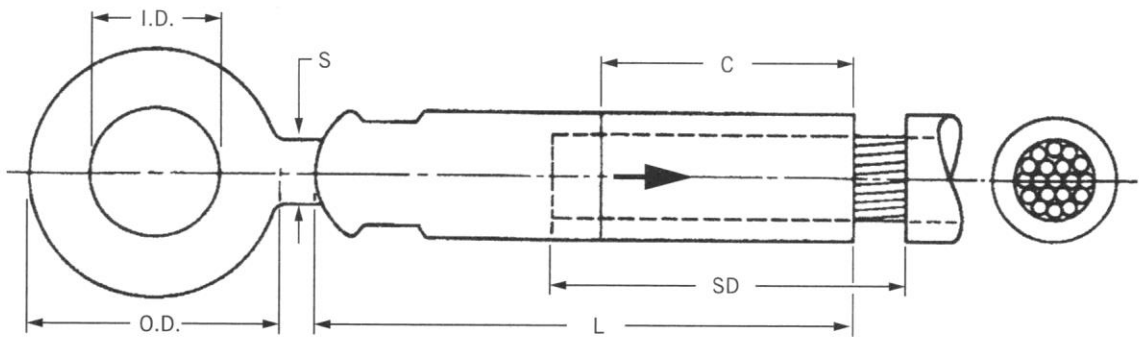
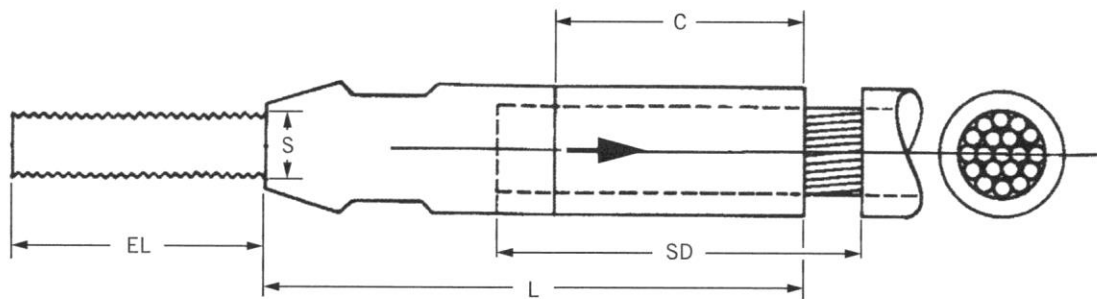


## Drawing — 5100



## Drawing — 5600



### ASSEMBLY INSTRUCTIONS- SOLID DIELECTRIC INSULATED CABLE 5100 – Pulling Eye, 5200 – Pulling Bolt

1. Strip cable to "Stripping Distance" (SD) shown in table. Pencil insulation enough to remove sharp edges.
2. Insert conductor into barrel of Pulling Device until bottomed.
3. Crimp with press rated at least 60 tons for all die sizes. Use applicable die as determined from the die selection chart. Start crimps at the circumferential crimp mark and proceed with crimps in the direction shown by the arrow over "Crimping Distance" (C) shown in table. Overlap crimps or space them not more than one quarter inch apart. Make last crimp overlap the end of Pulling Eye by 1/4 to 1/2 the width of Crimping die.
4. Install Heat Shrinkable Sleeve by slipping it over Pulling Device until it is centered over gap between insulation and Pulling Device, Apply heat source by slowly moving it back and forth all around sleeve circumference, starting at sleeve center and moving towards "eye" or "bolt" end, until waterproofing adhesive oozes out end of sleeve. Shrink other half of sleeve similarly.

### ALCOA DIES 60 TON PRESS

ALCOA	U11	MATERIAL DIAMETER
6012SH (aka 6011AH)	76	1"
6020AH	99	1 1/4"
6024AH	115	1 1/2"
6027AH	140	1 3/4"
6030AH	160	2"
6034AH	189	2 1/4"
6040AH	204	2 1/2"
Custom Die Size	243	3"