

When the right communications matter



Industrial Network Cabling and Connector Systems - Copper and Fiber-Optic

UK Website: www.industrialcomms.co.uk
E-mail: sales@industrialcomms.com
Phone: +44(0)203 086 9569



Industrial Communication Products Ltd.

Industrial Network Cabling and Connector Systems - Copper and Fiber-Optic



Introduction

Welcome to the first edition of our Industrial Network Cabling and Connector Systems brochure. We hope you will find this brochure of use in helping you source the cables, connectors and fiber accessories you need to complete your projects successfully. We can now offer you connector and cabling solutions for most of today's leading protocols such as Profibus, CAN Bus, RS232, RS485 and Industrial Ethernet (Profinet, Ethernet/IP).

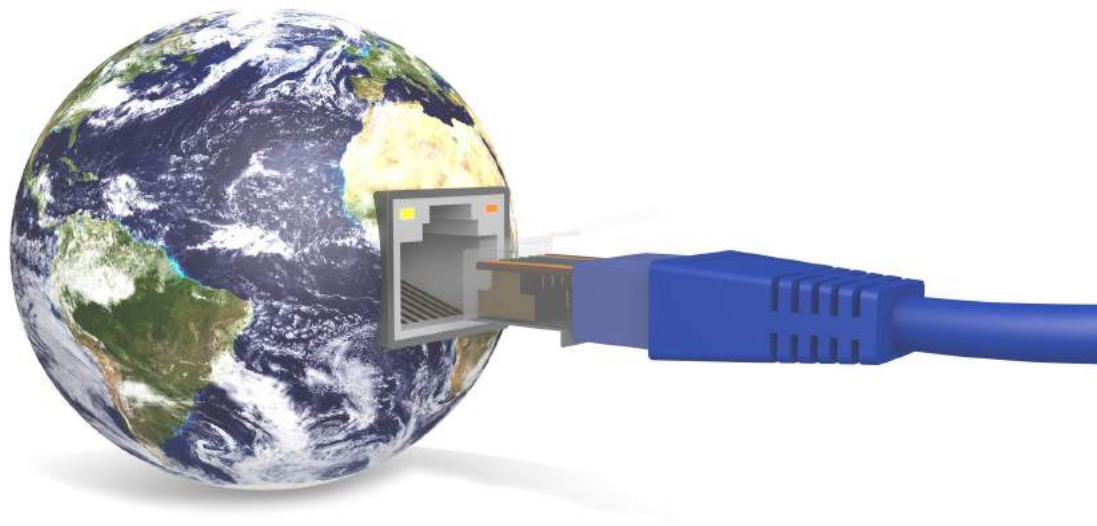
We have teamed up with leading suppliers such as Belden, Phoenix Contact and Metz Connect to offer you the latest innovative products from these manufacturers. In addition, we offer from our ICP-Tek own brand, products which cover many applications for Industrial Ethernet (Profinet, Ethernet/IP) with both copper and fiber solutions. These fiber products can also be used for many applications with Profibus, CAN bus and other serial/fieldbus protocols.

We are showcasing from our partner supplier Metz Connect, their comprehensive range of M12 Ethernet connectors (D-Code and X-code) and also their STEADYTEC modular IP67 ruggedized connector system with RJ45 Ethernet, USB or Fiber-optic inserts with various housing options. From Phoenix Contact we are showcasing their range of connectors and cables for Profibus DP applications.

We are not able to show in this short-form catalogue all the products we offer, so if you don't see what you are looking for, please contact us and we will do our utmost to source your requirement for you.

Regards

Graham Bull – Industrial Communication Products Ltd



Index

Copper Cabling Systems		Page
Profibus DP 9 Way D-Sub Connectors and Cables		4
Field-Installable Field Plug Pro RJ45 Connectors and Inline Connectors		5
Industrial Cat5e/Cat6 Cables		5
Cat5e and Cat6 Patch Leads		6
DIN-Rail Cat5e/Cat6 Patch Panels (MIPP)		6
19" Rack Cat5e/Cat6 Patch Panels		6
M12 D-Code (4pin) Ethernet Connectors and Cables		7
M12 X-Code (8pin) Ethernet Connectors and Cables		8
Fiber Cabling Systems		
Fiber-Optic Patch Leads and Cables		9
Fiber-Optic Splice Boxes, Patch Panels and Pig Tails		10 + 11
IP65/66/67 Protected Connectors with USB, RJ45 and Fiber-Optic Inserts		
RJ45 and USB Test Jacks		12
RJ45 and USB IP67 Bulkhead Connectors		12
RJ45 and Fiber Optic IP67 Connector Systems		13
STEADYTEC Connector Systems		14+15



Profibus DP 9-Way D-Sub Connectors



2708232

2708245

2313698

2313708

2744380

Profibus DP 9-Way D-Sub Connectors

Part No.	Description
2708232	Profibus DP connector with 35° cable entry, screw termination
2708245	Profibus DP connector with 35° cable entry, screw termination with D-sub programming port
2313698	Profibus DP connector with 90° cable entry, screw termination
2313708	Profibus DP connector with 90° cable entry, screw termination with D-sub programming port
2744380	Profibus DP connector, Axial version with screw terminations



2744652

2744623

Profibus DP Cable and Tools

Part No.	Description
2744652-CUT-xx	Profibus type A cable, fast connect type, per metre
2744623	Quick strip tool for profibus fast connect cable

Notes: xx denotes cut length in metres.

Please contact us for details on other grades of Profibus cable



2708232

CANBUS and RS232/RS485 Solutions

CANBUS and RS232/RS485

Please contact us for connectors and cables for CANBUS and RS232/RS485 applications

FieldPlug Pro RJ45 Plug Connectors



130E405032-E



130E405032-PE



130E405042-E



130E405042-PE

Industrial RJ45 Plug Connectors - Tool Assembly - Field Installable

Part No.	Description
130E405032-E	Industrial RJ45 Cat6a 180° plug - field installable (tool less design) 4 x twisted pairs
130E405032-PE	Industrial RJ45 Cat5e 180° plug for Profinet 4 way cable - field installable (tool less design) 2 x twisted pairs
130E405042-E	Industrial RJ45 Cat6a 360° plug - field installable (tool less design) 4 x twisted pairs. 360° cable entry for variable angle of cable entry
130E405042-PE	Industrial RJ-45 Cat5e Profinet field plug pro - 360° cable entry for variable angle of cable entry, 2 x twisted pair



CAT5E



CAT6

Industrial and Specialist Cat5e/Cat6 Cables

Part No.	Description
CAT5E-CUT-xx	Cat5e UTP cable - 24 AWG per metre
CAT5E-BULK	Cat5e UTP cable - 24 AWG - 305 metre reel
1416392	Profinet Cat5e 4 core PVC
BE43769	Cat5e Railtuff Railway approved
BE43800	Cat6 RailTuff Railway approved
PSMDA6004BU	Cat6 LSZH DNV Marine approved

Notes: xx denotes cut length in metres.



130863-02-E

Jointing Inline Connector

Part No.	Description
130863-02-E	Connect/extend/repair/relocate copper data cables up to Cat7

Patch Leads - Cat5e and Cat6

ICP-Tek



5EPL Series - Cat5e Patch Leads

Part No.	Description
5EPLxGY	Grey Cat5e RJ45 patch lead 24AWG, LSZHjacket
5EPLxRD	Red Cat5e RJ45 patch lead 24AWG, LSZHjacket
5EPLxYW	Yellow Cat5e RJ45 patch lead 24AWG, LSZHjacket
5EPLxGN	Green Cat5e RJ45 patch lead 24AWG, LSZHjacket
5EPLxBE	Blue Cat5e RJ45 patch lead 24AWG, LSZHjacket

Notes: x denotes 1 = 1m, 2 = 2m, 3 = 3m, 5 = 5m, 7 = 7m, 10 = 10m, 15 = 15m

6PL Series - Cat6 Patch Leads

Part No.	Description
6PLxGY	Grey Cat6 RJ45 patch lead 23AWG, LSZH jacket
6PLxRD	Red Cat6 RJ45 patch lead 23AWG, LSZH jacket
6PLxYW	Yellow Cat6 RJ45 patch lead 23AWG, LSZH jacket

Notes: x denotes 1 = 1m, 2 = 2m, 3 = 3m, 5 = 5m, 7 = 7m, 10 = 10m, 15 = 15m



MIPP DIN-Rail Cat5e/Cat6 Patch Panels

Part No.	Description
MIPP/AD/CUD4	4 x RJ45 Cat5e Keystone unshielded DIN-Rail mounting copper cable patch panel
MIPP/BD/CUD4/CUD4	8 x RJ45 Cat5e Keystone unshielded DIN-Rail mounting copper cable patch panel
MIPP/AD/CUE4	4 x RJ45 Cat6 Keystone unshielded DIN-Rail mounting copper cable patch panel
MIPP/BD/CUE4/CUE4	8 x RJ45 Cat6 Keystone unshielded DIN-Rail mounting copper cable patch panel

ICP-Tek



19" Copper Rack Patch Panels

Part No.	Description
5EPP24	24 Port CAT5e UTP patch panel IDC
6PP24M	24 Port CAT6 UTP patch panel IDC

M12 Ethernet D-Coded Connectors and Cables



MNF881A115

M12 Field Plug - D-Coded - Field Installable

Part No.	Description
MNF881A115	M12 D-coded plug 4 pole field installable



142M1D10xxx

142M1D11xxx

142M4D15xxx

142M1D90xxx

142M1D19xxx

M12 Connecting Cables - D-Coded

Part No.	Description
142M1D10xxx	M12 D-coded plug 4 pole to bare end
142M1D11xxx	M12 D-coded plug 4 pole to M12 D-Coded plug
142M4D15xxx	M12 D-coded plug 4 pole to RJ45 plug
142M1D90xxx	M12 angled D-coded 4 pole plug to bare end
142M1D19xxx	M12 angled D-coded 4 pole plug to straight M12 D-coded plug

Notes: xxx denotes 010 = 1 metre | 020 = 2 metre | 050 = 5 metre - Other lengths available on request



MMW370A1A1



MMW360A1A1



MMT471A115

D-Code PCB Jacks

Part No.	Description
MMW370A1A1	Jack M12, solderable, 4-pole, D-coded, rear wall mounting
MMW360A1A1	Jack M12, solderable, 4-pole, D-coded, front mounting
MMT471A115	Jack M12, angled 90°, 4-pole, D-coded, solderable, rear wall mounting, 2.5 mm wall thickness
MMT471A115-0001	Jack M12, angled 90°, 4-pole, D-coded, solderable, rear wall mounting, 4.0 mm wall thickness
MMT471A115-0002	Jack M12, angled 90°, 4-pole, D-coded, solderable, rear wall mounting, 5.0 mm wall thickness

M12 Ethernet X-Coded Connectors and Cables



MNF881A315-0001



MMF881A315



MMF881A315-0001



MWN811A415

M12 Field Plug and Jacks - X-Coded - Field Installable

Part No.	Description
MNF881A315-0001	X-code plug
MMF881A315	X-code jack
MMF881A315-0001	X-code jack with flange
MWN811A415	X-code panel feed through adapters



142M2X10xxx



142M2X11xxx



142M2X15xxx



142M2X90xxx



142M2X19xxx

M12 Connecting Cables - X-Coded

Part No.	Description
142M2X10xxx	M12 X-coded plug to bare end
142M2X11xxx	M12 X-coded plug to M12 X-coded plug
142M2X15xxx	M12 X-coded plug to RJ45 plug
142M2X90xxx	M12 angled X-coded plug to bare end
142M2X19xxx	M12 angled X-coded plug to M12 straight X-coded plug



MMT371A3B5



MMT361A315



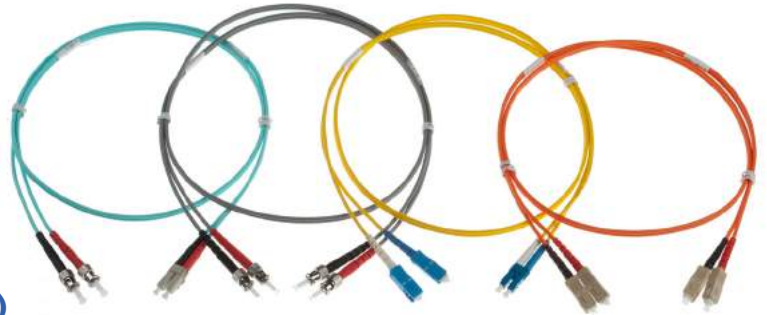
MMT471A315

X-Coded PCB Jacks

Part No.	Description
MMT371A3B5	Jack M12, 8-pole, X-coded, solderable, rear wall mounting
MMT361A315	Jack M12, 8-pole, X-coded, solderable, IP67, front mounting
MMT471A315	Jack M12, angled 90°, 8-pole, X-coded, solderable, rear wall mounting 2.5mm wall thickness
MMT471A315-0001	Jack M12, angled 90°, 8-pole, X-coded, solderable, rear wall mounting 4.0mm wall thickness
MMT471A315-0002	Jack M12, angled 90°, 8-pole, X-coded, solderable, rear wall mounting 5.0mm wall thickness

Fiber-Optic Patch Leads

ICP-Tek



3 DX Range - Multimode Fiber (OM1, OM2, OM3)

Part No.	Description
3DX-SC-SC-x-AA	SC duplex to SC duplex OM3 MM aqua
3DX-LC-SC-x-AA	LC duplex to SC duplex OM3 MM aqua
3DX-LC-LC-x-AA	LC duplex to LC duplex OM3 MM aqua
3DX-ST-ST-x-AA	ST (dual) to ST (dual) OM3 MM aqua

9 DX Range - Single Mode Fiber (OS1, OS2)

Part No.	Description
9DX-SC-SC-x-YW	SC duplex to SC duplex OS2 SM yellow
9DX-LC-SC-x-YW	LC duplex to SC duplex OS2 SM yellow
9DX-LC-LC-x-YW	LC duplex to LC duplex OS2 SM yellow
9DX-ST-ST-x-YW	ST (dual) to ST (dual) OS2 SM yellow

Notes: x denotes 1 = 1m, 2 = 2m, 3 = 3m, 5 = 5m, 10 = 10m

Please contact us for alternative connector combinations and cable lengths

ICP-Tek



Fiber-Optic Pre-Term Cables

Pre Terms

We are able to supply lengths of pre-terminated fiber-optic cable with connectors fitted and pulling socks. Supplied on cable drum ready for installation. Available for most types of fiber including CST armoured.

ICP-Tek



Bulk Fiber-Optic Cables

Pre Terms

We are able to supply bulk fiber-optic cable on reels including CST armoured cable. Please contact us with your requirements.

Fiber Splice Boxes



FIMP-6SCD-xM



FIMPXL-12SCD-xM

FIMP DIN-Rail Fiber Splice Box

Part No.	Description
FIMP-6SCD-MM	12 way DIN-rail fiber splice box loaded with 6 x SC Duplex adaptors for terminating up to 12 multi-mode G62,5/125um or G50/125um fiber cores
FIMP-6SCD-SM	12 way DIN-rail fiber splice box loaded with 6 x SC Duplex adaptors for terminating up to 12 Single-mode E10/125um fiber cores
FIMP-XL-12SCD-MM	24 way DIN-rail fiber splice box loaded with 12 x SC Duplex adaptors for terminating up to 24 multi-mode G62,5/125um or G50/125um fiber cores
FIMP-XL-12SCD-SM	24 way DIN-rail fiber splice box loaded with 12 x SC Duplex adaptors for terminating up to 24 Single-mode E10/125um fiber cores

Note: Notes: Each FIMP kit includes 1 x Splice Cassette, 1 x Splice Holder and 1 x Cable Gland. Each FIMP-XL kit includes 1 x Splice Cassette, 2 x Splice Holders and 2 x Cable Glands. Housing Colour: Blue



DM-02-SCD-02x



DM-08-SCD-08x



DM-08-ST-08x

Wall Panel Mount Fiber Splice Box - DM Series

Part No.	Description
DM-02-SCD-02x	2 way SC duplex wall mount (1 x SC duplex connector)
DM-08-SCD-04x	4 way SCD duplex wall mount (2 x SC duplex connectors)
DM-08-SCD-08x	8 way SCD duplex wall mount (4 x SC duplex connectors)
DM-04-ST-04x	4 way ST wall mount (4 x ST connectors)
DM-08-ST-08x	8 way ST wall mount (8 x ST connectors)
DM-16-ST-16x	16 way ST wall mount (16 x ST connectors)

Note: Part includes splice tray with shrink splice holder and M20 cable strain relief. No pigtails included. x denotes M = Multi-mode, S = Single-mode

Fiber Splice Patch Panels

ICP-Tek



PAT-12-SCD-12-xx

19" Rack Mount Front Sliding 1U Fiber Patch Panel

Part No.	Description
PAT-12-SCD-04-BK-SFE	8 way patch panel loaded with 4 SC duplex multi-mode adaptors - black
PAT-12-SCD-08-BK-SFE	16 way patch panel loaded with 8 SC duplex multi-mode adaptors - black
PAT-12-SCD-12-BK-SFE	24 way patch panel loaded with 12 SC duplex multi-mode adaptors - black
PAT-12-SCD-04-SM-BK-SFE	8 way patch panel loaded with 4 SC duplex single-mode adaptors - black
PAT-12-SCD-08-SM-BK-SFE	16 way patch panel loaded with 8 SC duplex single-mode adaptors - black
PAT-12-SCD-12-SM-BK-SFE	24 way patch panel loaded with 12 SC duplex single-mode adaptors - black
Other connector types are available upon request. Pigtails to be ordered separately.	

ICP-Tek



Pig Tails

Connector type	Multi-mode	Single-mode
SC	6T-SCS-1(OM1), 5T-SCS-1(OM2)	9T-SCS-1
LC	6T-LCS-1(OM1), 5T-LCS-1(OM2), 5T-LCS-1(OM3)	9T-LCS-1
ST	6T-ST-1(OM1), 5T-ST-1(OM2)	9T-ST-1

IP Protected Connectors



IP65-Test-Jack-USB



IP65-Test-Jack-RJ45

IP65 Test Jack

Part No.	Description
IP65-Test-Jack-USB-Coupler-Kit	E-DAT universal test jack housing, E-DAT industry USB A coupler insert
IP65-Test-Jack-RJ45-Coupler-Kit	E-DAT universal test jack housing, E-DAT industry RJ45 coupler insert



IP67 Bulkhead-USB



IP67 Bulkhead-RJ45

IP67 Bulkhead

Part No.	Description
IP67 Bulkhead-USB-Coupler-Kit	IP67 coupler/bulk head housing, E-DAT industry USB A coupler insert, black plastic cap for box mount receptacle
IP67 Bulkhead-RJ45-Coupler-Kit	IP67 coupler/bulk head housing, E-DAT industry RJ45 coupler insert, black plastic cap for box mount receptacle

IP Protected Connectors



1402915020ME



1402L13320ME



1402815020ME



1402313320ME

IP67 Fiber-Optic Connector System

Part No.	Description
1402815020ME	IP67 V1 cable plug metal with LC duplex multi-mode fiber-optic insert
1402313320ME	IP67 V1 bulkhead mount metal with LC duplex multi-mode fiber-optic insert
1402915020ME	IP67 V1 cable plug metal with LC duplex single-mode fiber-optic insert
1402L13320ME	IP67 V1 bulkhead metal with LC duplex single-mode fiber-optic insert



1401113310ME



1401515010ME

IP67 RJ45 Connector System

Part No.	Description
1401113310ME	IP67 V1 bulkhead metal mount with RJ45 insert T568A
1401515010ME	IP67 V1 cable metal plug with RJ45 insert



1401018002KI



1401018102KI

IP67 Protection Covers

Part No.	Description
1401018002KI	IP67 black plastic protection cap for plugs
1401018102KI	IP67 black plastic protection cap for flange

STEADYTEC Connector Systems - Unlimited Options

Metz Connect offers the modular STEADYTEC connection systems with a wide choice of connector inserts, RJ45, USB and fiber-optic variants with various plastic and metal IP67 rated housings for a host of industrial applications.

Simply select your type of application and your desired material! You may choose between plastic and metal housing. Same colour dot = combination possible



Plug Inserts

Part No.	Description	
1401500810-I	E-DAT Industry RJ45 plug insert *	■ ▲ ● ◆
1401400810-I	E-DAT Industry RJ45 field plug insert *	■ ▲ ● ◆
1402500822-I	OpDAT Industry 2SC plug insert for multi-mode fiber *	■ ▲ ● ◆
1402600822-I	OpDAT Industry 2SC plug insert for single-mode fiber *	■ ▲ ● ◆
1402700822-I	OpDAT Industry 2SC plug insert for plastic optical fiber *	■ ▲ ● ◆
1402800820-I	OpDAT Industry 2LC plug insert for multi-mode fiber *	■ ▲ ◆
1402900820-I	OpDAT Industry 2LC plug insert for single-mode fiber *	■ ▲ ◆



Plug Housings

Part No.	Description	
1401015000ME	Industry IP67 V1 metal plug housing *	■
1401025000ME	Industry IP67 V1 metal plug housing with bend protection *	■
1401015002KE	Industry IP67 V1 plug housing *	■
1401025002KE	Industry IP67 V1 plug housing with bend protection *	■
1401045002KE	Industry IP67 V4 plug housing *	▲
1401055002KE	Industry IP67 V4 plug housing with bend protection *	▲
1401065000ME	Industry IP67 V5 metal plug housing *	●
14010850C0ME	RJ45 - Industry IP67 V14 metal plug housing *	◆
14010950C0ME	RJ45 - Industry IP67 V14 metal plug housing with bend protection *	◆
14010850F0ME	FO - Industry IP67 V14 metal plug housing *	◆
14010950F0ME	FO - Industry IP67 V14 metal plug housing with bend protection *	◆



1401013300ME



1401013302KE



1401043302KE



1401063300ME



1401083300MN

Flange Housings

Part No.	Description	
1401013300ME	Industry IP67 V1 bulkhead metal *	■
1401013302KE	Industry IP67 V1 bulkhead *	■
1401043302KE	Industry IP67 V4 bulkhead *	▲
1401063300ME	Industry IP67 V5 bulkhead *	●
1401083300MN	Industry IP67 V14 bulkhead metal *	◆



MJT5214111



1401200810MI



1401100810MI (TIA-A)



1402100820MI



1402300820MI
















1401U00812KI

Flange Inserts

Part No.	Description	
MJT5214111	RJ45 Gigabit Module with built in Magnetics	■ ▲ ◆
1401200810MI	E-DAT Industry RJ45 coupler insert *	■ ▲ ● ◆
1401100810MI	E-DAT Industry RJ45 field jack T568A *	■ ▲ ● ◆
1401800810MI	E-DAT Industry RJ45 field jack T568B *	■ ▲ ● ◆
1402100820MI	OpDAT Industry SC-RJ/2SC coupler MM insert *	■ ▲ ◆
1402K00820MI	OpDAT Industry SC-RJ/2SC coupler SM insert *	■ ▲ ◆
1402300820MI	OpDAT Industry LC-D coupler Ph-Br MM insert *	■ ▲ ◆
1402L00820MI	OpDAT Industry LC-D coupler ceramic SM insert *	■ ▲ ◆
1401U00812KI	E-DAT Industry USB A coupler insert *	■ ▲

Other Products from IndustrialComms

Ethernet Media Convertors	Ethernet Switches	Ethernet Extenders	WLAN	Remote Access
				
Serial and Fieldbus Fiber Repeaters	Fieldbus Gateways	Serial to Ethernet Gateways	Fiber-Optic Modules	Power Supplies
				
 eks fiber optic systems	 GarrettCom A BELDEN BRAND		 EtherWAN	 KYLAND
 HIRSCHMANN A BELDEN BRAND		 SIEMENS Scalance	 RUGGEDCOM A Siemens Business	 Ultra ELECTRONICS Weed Instrument

Web: www.industrialcomms.co.uk
 E-mail: sales@industrialcomms.com
 Phone: +44(0)203 086 9569

The Stables, Griffin Farm, Conger Lane,
 Toddington, Bedfordshire LU5 6BT



Industrial Communication Products Ltd.