

INSTALLATION GUIDE FOR TRANSCEIVERS

FIBRE OPTIC PATCH CORD AND CABLING SOLUTIONS

POWER CABLES, ACCESSORIES AND SOLUTIONS

DIRECT ATTACH CABLES

TRANSCEIVER RANGES

MEDIA CONVERTERS



MEMORY

EXCESS STOCK SERVICES

REFURBISHED EQUIPMENT

COMPATIBLE SOLUTIONS FOR A RANGE OF MANUFACTURERS

✓ LIFETIME REPLACEMENT GUARANTEE ON PRODUCTS

IMPORTANT PRODUCT INFORMATION GUIDE

Transceivers can be damaged by static electricity. Follow the procedure in protecting against Electrostatic Discharge (ESD) to help prevent ESD damage when unpacking and installing the device.

An ESD protective wrist strap or ESD gloves are recommended whilst handling this product.

Removing and inserting a transceiver module can shorten its useful life; do not remove and insert transceiver modules any more than required.

The temperature of an operational transceiver may exceed 70c (158F); exercise caution when removing or handling a transceiver ensuring that protective equipment is worn.

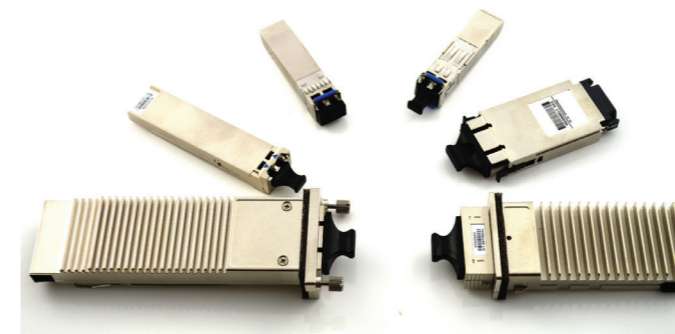
Protect the transceiver modules by inserting clean dust covers into them when instructed. Be sure to clean the optic surfaces of fibre cables before you plug them into transceivers as this will avoid getting dust or other contaminants into the optical ports of the transceiver.

Some transceivers use small lasers to transmit information within a network. Keep any ports covered and avoid staring into any apertures.

Invisible laser radiation may be emitted from disconnect fibres or connectors. Do not stare into beams or view directly into optical instruments.

CHIMERA IS A LEADING BRAND IN COMPATIBLE OEM NETWORKING PRODUCTS

- Patch cables
- Media converters
- Network cards and modules
- Guaranteed OEM compatibility
- Lifetime warranty
- Guaranteed 100% compatibility
- 0% RMA rate
- Many cost savings
- Switches and many more...



Transceivers of all types, available in small form factors used in a variety of networking products and data communication applications.



Direct attach cables (DAC) come in either an active or passive twinax (twinaxial) cable assembly and connect directly into the same unit as a transceiver.

Compatible solutions available for:



And more...

REGULATIONS AND STANDARDS

STANDARDS

- GR-20-CORE: generic requirements for optical fibre and optical cable
- GR-326-CORE: generic requirements for single-mode optical connectors and jumper assemblies
- GR-1435-CORE: generic requirements for multi-fibre optical connectors
- IEEE 802.3: 10-gigabit ethernet
- ITU-T G.709: interfaces for the optical transport network
- ITU-T G.975: GFEC
- ITU-T G.975.1: EFEC
- MSA 8431 (optical modules, active optical cables and passive twinax cables)
- MSA 8461 (active twinax cables) cable jacket is UL #E116441 compliant
- All length ELV and RoHS compliant

SAFETY

- Laser Class 1 21CFR-1040 LN#50 7 / 2001
- Laser Class 1 IEC60825-1
- Laser Class 1M per IEC60825-1 and CFR 21 Section 1040

GENERIC PROCEDURES FOR INSTALLATION & REMOVAL

GENERIC PROCEDURE FOR INSTALLATION

Remove all packaging. Do not remove the dust/optical cover. Place on the anti-static packaging.

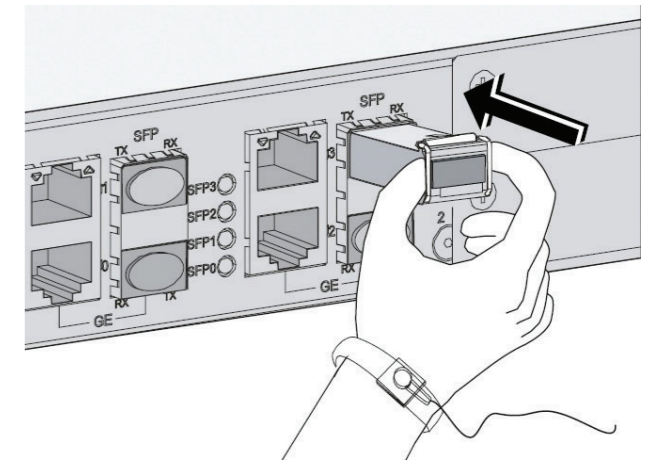
Remove the cover/dust plug or cable from the installing unit. Check the label to ensure you have the correct unit to install.

Refer to the model chart for specific instructions.

Line the transceiver straight with the installation port.

Gently slide the transceiver into the unit straight until it sits flush with unit.

Replace the dustcover/install cabling as required. Do not leave the optical port open for any length of time.



GENERIC PROCEDURE FOR REMOVAL

Ensure you have applied an ESD protective wrist strap or ESD gloves.

Remove any cables from the modules.

Remove any dust plugs from the modules as required for the specific transceiver module.

Refer to the model chart for specific instructions.

Disengage the module from the unit.

Slide the module straight out of the unit and place on the anti-static packaging.

Replace the dust covers/face plates on both module and unit. Do not leave optical port open for any length of time.

SPECIFIC INSTALLATION & REMOVAL INFORMATION

	INSTALLATION	REMOVAL
SFP & SFP+	<p>Bale clasp - ensure that it is in the unlocked position during insertion (out from the transceiver). When inserted, lock the bale clasp up.</p> <p>Slide tab - insert into the unit until it clicks into place.</p> <p>Mylar tab - when installing, do not press on the mylar installation tab</p> <p>Actuator button - slide until it clicks into place. Do not press on the button during installation.</p>	<p>Bale clasp - unlock the bale clasp before removal.</p> <p>Slide tab - hold the top and bottom of the module. On the underside of the module, slide the tab forward towards the unit, disengaging the module from the unit.</p> <p>Mylar tab - pull the tab in a slightly downwards motion then remove the module.</p> <p>Actuator button - press the button on top of the module until it clicks and releases the module from the unit.</p>
GBIC	Slide fully into the unit until positioned, the face of the module will sit flush with the unit.	Hold both sides of the module and gently pull it from the unit.
XFP	When inserting into the unit, slide halfway and move the clasp to the unlocked position. Insert fully and lock to the unit when positioned.	Unlock the module from the unit, hold both sides and remove halfway out of the unit. Lock the clasp back onto the module and remove fully.
CFP	Slide into the unit until the gasket makes contact with the unit faceplate. Press firmly on the front of the module to position the module in the unit. Gently tighten the two captive installation screws to securely connect the module to the unit.	Loosen and remove screws from the unit. Slide the module out of the unit.

SPECIFIC INSTALLATION & REMOVAL INFORMATION

	INSTALLATION	REMOVAL
QSFP & QSFP+	<p>Pull tab - slide gently into the unit and press firmly with your thumb to ensure positioned.</p> <p>Bale clasp - keep the clasp aligned in a vertical position. Slide gently into the unit. Press firmly with your thumb to ensure the module is positioned.</p>	<p>Pull tab - hold the pull tab and gently pull straight to release the module from the unit.</p> <p>Bale clasp - pivot bale clasp into unlocked horizontal position and hold the sides of the module straight out of the unit.</p>
XENPAK	Slide into the unit until the module sits flush with the unit. Press firmly on the front of the module to seat the module in the unit. Gently tighten the two captive installation screws to securely connect the module to the unit.	Loosen and remove the screws from the unit. Slide the module out of the unit.
CPAK	Slide into the unit until the module connects. Press firmly on the front of the module to ensure the module is positioned in the unit securely.	Hold the tab and pull gently until the module is fully out of the unit.
X2	Slide into the unit until the gasket flange makes contact with the unit faceplate. Press firmly on the front of the module to position the module in the unit.	Hold the gasket flange with your thumb and forefinger. With the other hand, hold the sides of module. Pull on the module sides until you feel the latching sleeve and disconnect from the unit. Slide the module out of the unit.
CXP	Slide the module into the unit. If there is resistance, pull out and flip the module over and reinsert the module into the unit until positioned correctly.	Pull the module straight out of the unit.

COMPATIBLE SOLUTIONS AVAILABLE THROUGH YOUR SUPPLIER:

