

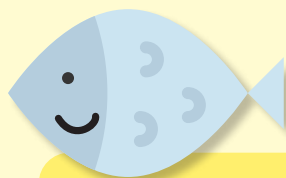
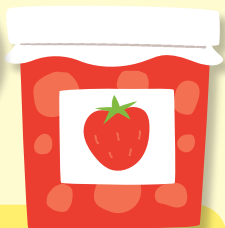
Rhyme time



Change the first letter to create new words

Use any tiles you like!

Will you make real words, nonsense words or both?



Remember 'ng' only appears at the end of a word.

s
a
t
p
i
h
m
d
g
o
c
k
c
k
e
u
r
h
b
f
f
l
l
s
s
g
g
j
v
w
x
y
z
q
u
c
h
s
h
t
h
n
g
a
i
e
e
i
g
h
o
a
o
o

j a m

Put a sound tile here

a m

Put a sound tile here

a m

Put a sound tile here

a m

Put a digraph sound tile here

a m

f i sh

Put a sound tile here

i sh

Put a sound tile here

i sh

Put a sound tile here

i sh

Put a digraph sound tile here

i sh

