

Race into place!

What you need:

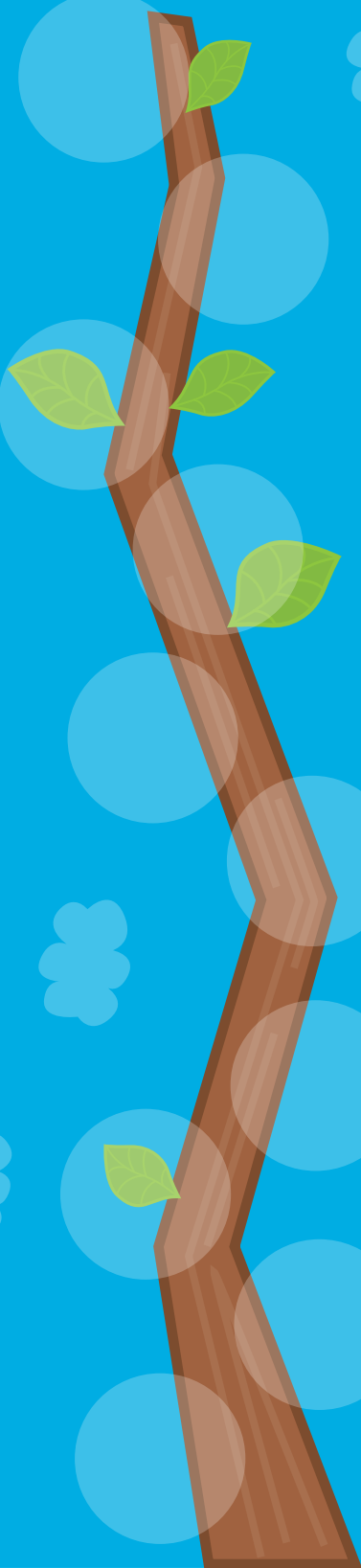
- The branch playing boards below.
- Plus, both sets of ladybirds 1-10.

How to play:

1. Each player places their ladybirds face down.
2. Say, "3, 2, 1, GO!" and flip all the ladybirds over.
3. Race to place all of the ladybirds on your branch in order, from 1 spot right up to 10 spots. The winner is the first player to complete their branch.

Branch 1

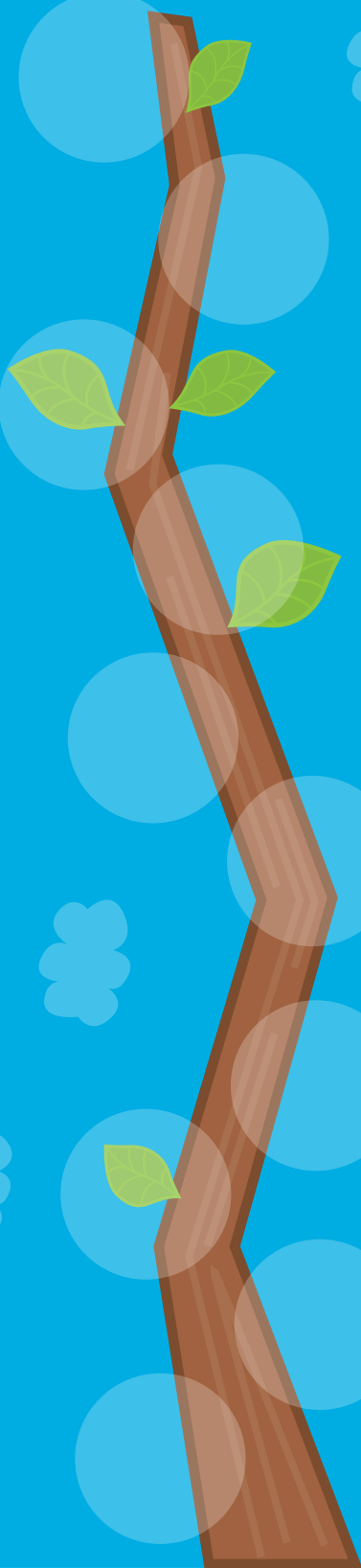
Player 1



Line up your ladybirds on the branch, from 1-10 spots!

Branch 2

Player 2



Line up your ladybirds on the branch, from 1-10 spots!