

Universal Tunnel Bag - Linq Adapter Bracket



Installation Instructions:

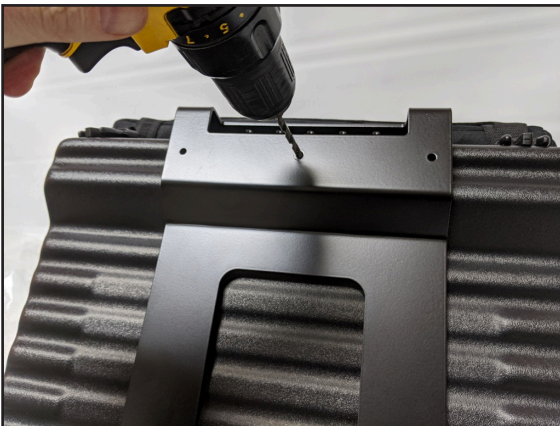
Tools needed to complete this project:
(Tools and 3/16" drill bit not included)



1. Start by extending the straps on the bag as far as they will go without removing the buckles from the (4) straps.



2. Pull the bag itself up and completely out of the tray.



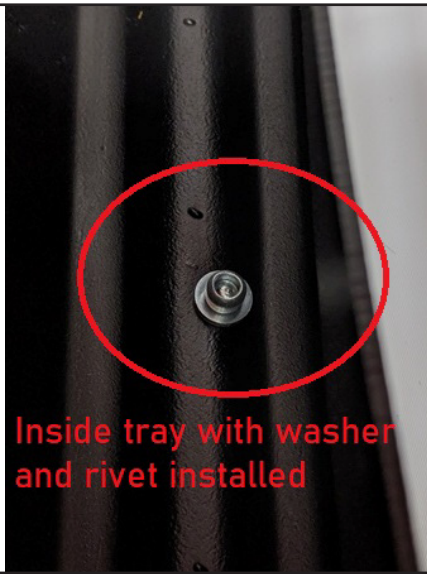
3. Flip the plastic tray over and mark the center.
(Note: As long as you leave enough room for the straps to wrap around the bottom you can customize your install to fit your specific set up.)

4. Place the bracket on the bottom of the tray, line up the center hole with your mark and drill a 3/16 hole.

WARNING: BE CAREFUL NOT TO DRILL TOO FAR INTO THE BOTTOM OF THE BAG.

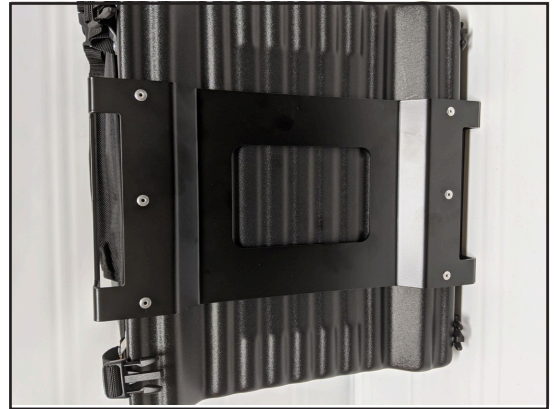


For questions, please contact us at:
586-215-6849 | paul@sledsolutions.com



Inside tray with washer and rivet installed

5. Install one rivet into the hole you just drilled. While holding a reinforcing washer on the inside of the bag with your hand pop the rivet. Make sure the bracket is straight and do the same for the other side. Once you have both of those rivets installed you can finish drilling the remaining holes and installing the rest of the rivets. At this time you can push the bag back into the tray.



6. Next take the female buckles and, using the provided button head screws and nylon lock nuts, join the two together. Make sure the smooth side of the buckles are facing the same direction along with the head of the screw.



7. Join the straps using the buckles you just assembled and pull them tight.



8. Install the Linq cam levers from Ski Doo (NOT PROVIDED) in one of (3) locations for a perfect fit.



For questions, please contact us at:
586-215-6849 | paul@sledsolutions.com

