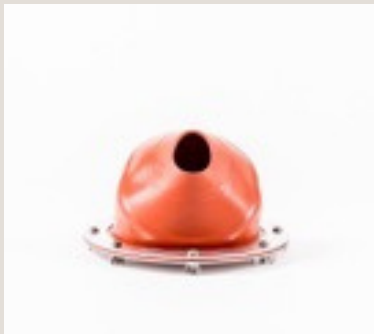


blue bohemian

live more outdoors

BELL TENT WOOD STOVE FLASHING KIT INSTRUCTIONS



1. Before fitting your flashing kit, you need to cut the silicon to size along the pre-marked line. Carefully cut the flashing along the line (located around one inch from the original hole). It is best to cut the silicone with a pair of scissors unless you have a very steady hand as using a Stanley knife may cause the silicone to split. Try to make sure to make the cut as neat as possible to prevent any chance of the silicone splitting.

2. Position your stove where you would like it in your tent. Follow the flue up to where it meets the tent canvas to work out where you will need to cut the hole. Hold one of the metal rings against the canvas and draw around the inside diameter. Next, mark where each of the holes are located.



3. Now you need to cut the hole in the canvas. Using a craft knife carefully cut along the line you marked out before

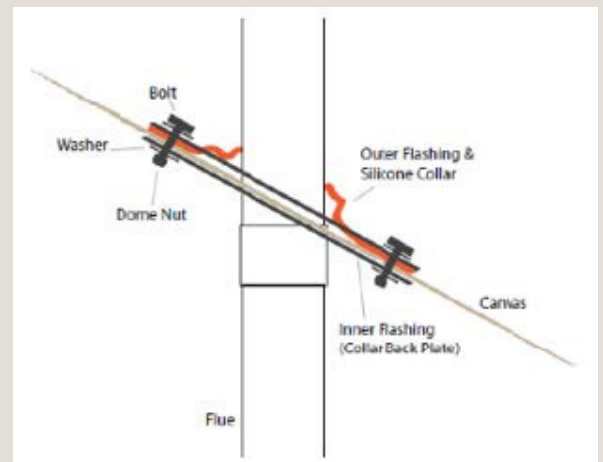
4. With something sharp, make holes where you have you marked them out. This is where the screws will go.





5. Now attach the flashing kit. Clamp the two rings on either side of the canvas with the silicon on the outside. Push the bolts through and screw.

6. Push the flue through the flashing from the inside. You can use a little water to lubricate the flue if it is hard to move.



7. Fit the flues into the top of the stove. Check to make sure everything is stable and fully fitted together. **Now you're ready to light your stove and get cooking!**

- It is possible to install the Traveller Flashing Kit alone but it is a lot easier to install with two people, one of each side of the canvas.
- Ensure your stove is at least 80cm away from the flashing kit
- If you are lighting your stove for the first time please make sure that your shelter is well ventilated as there can be some fumes which burn off in the first lighting of the stove. This disappears very quickly with increased heat.

Lotus Belle accept no responsibility for the use or misuse of the stove or it's flashing kit. We only recommend this for use with the stove in a fire retardant canvas such as bell tent, tipi or yurt. It is the customer's responsibility to ensure the shelter used has the appropriate fire retardant qualities necessary. We advise not to leave the stove unattended in the shelter and to make sure it has been extinguished prior to going to sleep. Always make sure the stove is positioned on a heat mat or pavers to prevent sparks going straight through your groundsheet. Lotus Belle does not accept any liability to any party for loss or damage incurred by use of the wood burning stove or flashing kit howsoever caused. If you would like any advice on installing your flashing kit and stove, please feel free to contact us at info@lotusbelle.com

