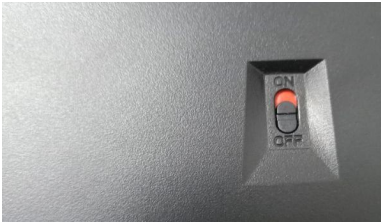
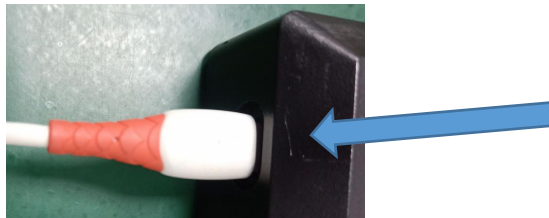


installation procedure

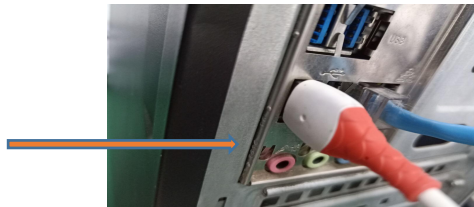
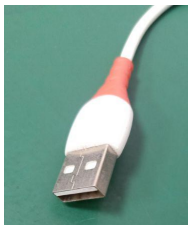
1. turn off the power button to off



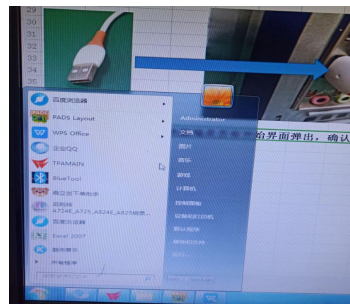
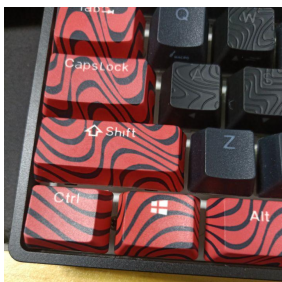
2. Use the usb type-c cable contact keyboard



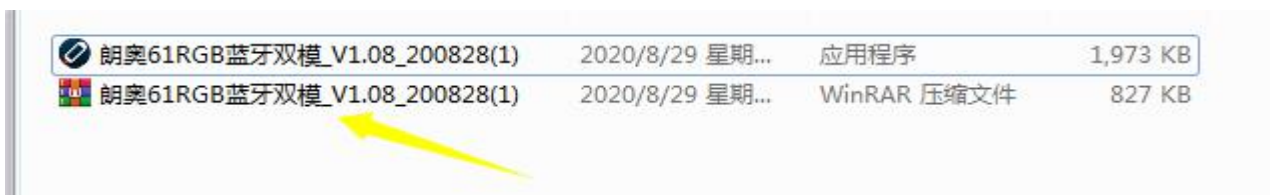
3. Use the usb type-c cable contact computer.



4. press the windows key to check the keyboard is working or no



5. open the attached file and decompression the program



6. double click the program

7. click the start button when the program window opened.



8. The installation of the program begins. During the installation process, there should be no operation to avoid damage caused by interrupting the installation of the program. The installation of the program will not be formally completed until the installation progress bar runs out and the keyboard backlight is fully lit.

