

# User Manual

8K HDMI 2.1 KVM Switches

## Single Monitor HDMI KVM switches



2Port Single Monitor



4Port Single Monitor

## Dual Monitor HDMI KVM switches



2Port Dual Monitor



4Port Dual Monitor

## Triple & Quad Monitor HDMI KVM Switches



2Port Triple Monitor



2Port Quad Monitor

## **I. Applicable Models:**

Single Monitor HDMI KVM Switch (2 & 4Port)

Dual Monitor HDMI KVM Switch (2 & 4 Port)

Triple Monitor HDMI KVM Switch (2 Port)

Quad Monitor HDMI KVM Switch (2 Port)

## **II. Product Description:**

There are options for single, Dual, triple and quad monitors for your selection. The single monitor KVM switch allows you to access two or four computers/DVR/NVR from a single USB keyboard, USB mouse, and monitor console.

The Dual / Triple / Quad monitor HDMI KVM switches are designed to control 2 or 4 computers or laptops with docking station that support 2 / 3 / 4 graphic outputs and other applicable devices from one set of keyboard and mouse, with 2-4 monitor outputs for extended or duplicated display.

Mouse and keyboard can be used alternately between two monitors, operating two interface files respectively. It is suitable for high resolution display and monitoring, multimedia design, multimedia post-production and video editing etc. It provides users with great convenience.

## **III. Single Monitor HDMI KVM switches Product Features:**

- Controls 2 or 4 HDMI interfaced computers and other applicable devices using one set of keyboard, mouse and monitor.
- Support resolution: 480i, 480p, 720p, 1080i, and 1080p (HDTV), 3840×2160@144Hz, 7680×4320@60Hz.
- HDMI 2.1 compliant, support emulated EDID.
- Switch Mode: a. wired remote push button switch b. Keyboard Hot-Key switch c. click mouse switch d. button switch on front panel.
- Multi-platform support: Windows 10/7/2000/XP/Vista、Linux and Mac.
- Support hot plug & play.
- Support HDCP.
- Support auto detection, if one computer is powered off, the switch will automatically switch to the next powered-on computer (default as inactive, please follow Hotkey operation for activation).
- With memory function in case of power-down.
- Support independent mouse keyboard switch, even without USB signal input, you can switch the input device easily by keyboard or mouse.
- Auto Scan Mode for monitoring all computers /DVR/NVR
- With extra USB3.0 HUB for data transferring rate up to 5Gbps/s (10 times faster than USB 2.0).
- With separate audio & microphone output

#### IV. Single Monitor HDMI KVM switch Data sheet

ITEM		MODEL	2Port HDMI KVM	4Port HDMI KVM
KVM output (Consel)	Keyboard		1×USB Type A F	
	Monitor		2× HDMI F	
	Mouse		1×USB Type A F	
	Stereo 3.5		3(one of them is for wired remote)	
	USB 3.0 Type A F		1	
Computer (Input)	HDMI F		2	4
	USB 3.0 Type B F		2	4
DC Socket			DC5V 2A	DC5V 2A
Push button			1	4
Digital Display			1	1
Resolution			3840×2160@144Hz, 7680×4320@60Hz	
Scan interval			8 ~ 999 Seconds	
Power Consumption			DC5V, 1.5W	DC5V, 1.7W
Environment	Operating Temperature		0-50°C	
	Storage Temperature		-20-60°C	
	Humidity		0-80%RH, Non-condensing	
Physical Properties	Housing		Metal	
	Weight		0.5KG	0.6KG
	Dimensions(L×W×H)		145×75×24MM	205×75×24MM

#### V. Dual, Triple or Quad monitor HDMI KVM switches Product Features:

- Controls computers and other applicable devices with multiple graphic outputs using one set of keyboard, mouse and multiple monitors.
- Support extended / duplicated / spliced display depending on computer setting.
- Support Resolution:480i,480p,720p,1080i,1080p(HDTV),3840×2160@144Hz,7680×4320@60Hz.
- HDMI 2.1 compliant, support emulated EDID.
- Multi-platform support: Windows 10/7/2000/XP/Vista、Linux and Mac.
- Support hot plug & play.
- Support auto detection, if one computer is powered off, the switch will automatically switch to the next powered-on computer (default as inactive, please follow hotkey operation for activation.).
- With memory function in case of power-down
- Support independent mouse keyboard switch, even without USB signal input, you can switch the input device easily by keyboard or mouse.
- Auto Scan Mode for monitoring all computers/DVR/NVR
- With extra USB3.0 HUB for data transferring rate up to 5Gbps/s (10 times faster than USB 2.0).
- With separate audio & microphone output.

## VI. Data sheet:

ITEM \ MODEL		2Port Dual Monitor KVM	2Port Triple Monitor KVM	2Port Quad Monitor KVM	4Port Dual Monitor KVM
KVM output (Consel)	Keyboard	1×USB Type A F			
	Monitor	2× HDMI2.0 F			
	Mouse	1×USB Type A F			
	Stereo 3.5	3(one of them is for wired remote)			
	USB 3.0 Type A F	1			
Computer (Input)	HDMI F	4	6	8	8
	USB 3.0 Type B F	2	2	2	2
DC Socket		DC5V2A	DC5V2A	DC5V2A	DC5V2A
Push button		1	1	1	4
Digital Display		1	1	1	1
Resolution		3840×2160@144Hz, 7680×4320@60Hz			
Scan interval		8 ~ 999 Seconds			
Power Consumption		DC5V, 1.5W	DC5V, 1.7W	DC5V, 2W	DC5V, 2.5W
Environment	Operating Temperature	0-50°C			
	Storage Temperature	-20-60°C			
	Humidity	0-80%RH, Non-condensing			
Physical Properties	Housing	Metal			
	Weight	0.5KG	0.6KG	0.7KG	0.7KG
	Dimensions (L×W×H)	130×75×42MM	130×75×63MM	130×75×84MM	200×75×42MM

## VII. How to Set Up:

1. Power off all devices;
2. Connect each computer to correspondent PC input section on the KVM switch using the USB and HDMI cables included.
3. Plug your mouse and keyboard to correspondent USB mouse and keyboard port on back panel; for gaming or mechanical keyboard, please plug them into the USB 3.0 HUB on front panel if they did not work well on the USB keyboard and mouse ports which are dedicated for hotkey.
4. Connect your monitor(s) to the KVM.
5. Plug in your speaker or microphone if needed.
6. Power on the KVM switch, then monitor(s), then computers.
7. Set computer display modes to extended display / duplicated display as needed.

**Note:** The monitors take around 20 seconds to display at first set-up, later on it only takes around 4-5 seconds to display upon switching.

## VIII. Connection Diagram:

### I. Single Monitor HDMI KVM switch (2Port)



---

### II. Dual monitor HDMI KVM switch(2Port)

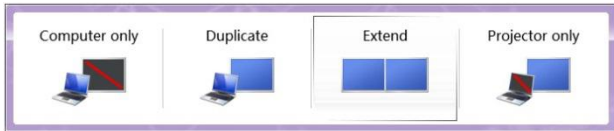


### IX. Dual graphics card display settings

Take win10 as an example: hold down the keyboard windows key→P, as



shown in the figure , a dialog will pop up as below.



Select Duplicate or Extend, then the two monitors can be displayed at the same time per selected display mode.

### X. Switch Modes:

➤ **Button Switch:** Switch to any port by buttons on front panel. Orange LED under push button indicates which Input device you selected.



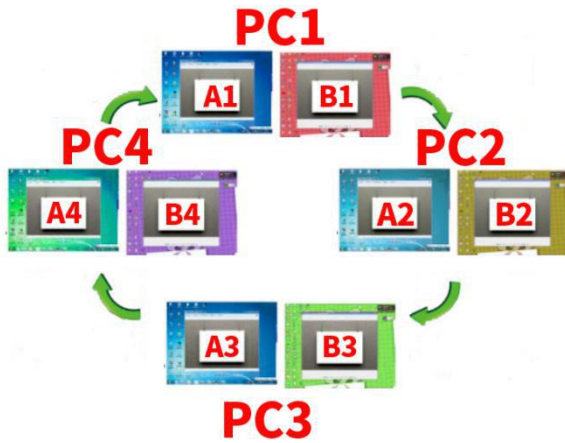
➤ **Click mouse Switch :**

2 port dual KVM switch: Double click the mouse middle roller (within 1 second) for back and forth switching

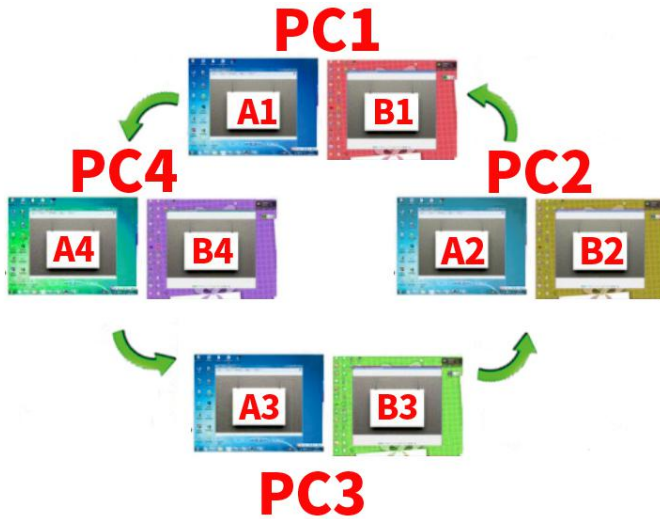


4 port dual KVM switch:

- a. Double click the middle roller of mouse, and then press the right mouse button to switch to the next port.



- b. Double click the middle roller of mouse, then press the left mouse button to switch to the previous port.



➤ Keyboard Hot-key Switch :

2port KVM: Double click the right **【Ctrl】**

4port KVM: Double click the right **【Ctrl】** → Port Number → **【Enter】**

- Wire Remote Push Button Switch: Switch to any port by remote button after you plug it to the KVM.





## XI. Turn on/off mouse and Keyboard hotkey

1. **Turn off mouse switch:** When hotkey switch is on (default as on and 'Hotkey on' lights in green), double click right **【Ctrl】 → 【M】 → 【Enter】**, after 'beep' sound, mouse switch function is turned off, the USB mouse port will be changed to a Standard USB 2.0 HUB. The small dot in the display window still lights up.
2. **Turn off Keyboard Hotkey:**
  - 1) When hotkey switch is on, click right **【Ctrl】 → 【K】 → 【Enter】**, after 'beep' sound, the keyboard hotkey switch is turned off, the USB keyboard port of KVM will be changed to a standard USB 2.0 HUB. The small dot in the display window disappears.
  - 2) Or quick press the hotkey on/off button on front panel (do not hold on to it).
3. **Restore Hotkey Function:** When mouse switch and hotkey switch were turn off, you could press 'Hot key on/off' button to restore Hotkey function (The small dot in the display window still lights up).

**Note:** The Hotkey on/off function is optional for the following scenarios:

- ①. Mouse click switch function conflicts with your mouse click needs.
- ②. When your special gaming, multi-media or mechanical keyboard and mouse do not work well with rear USB ports, by turning off the hotkey function you will have 3 standard USB2.0 Hubs for connecting your keyboard, mouse and more USB devices, and use wired remote switch for convenient switch.



## XII. Hotkey Setting:

Default hot-key is the right **【Ctrl】** (the Ctrl key on right side of keyboard). If use the right **【Ctrl】** conflicts with other hot-key, the hot-key can be set to **【Num lock】** or **【Scroll Lock】**.

For example: Double click the right **【Ctrl】 → 【Num lock】 → 【Enter】**, The hot-key changes to **【Num lock】**; double click the right **【Ctrl】 → 【Scroll Lock】 → 【Enter】**, The hot-key changes to **【Scroll Lock】** key. If the hot-key set as **【Scroll Lock】**, and you want to set the hot-key as the left **【Ctrl】** key, then double click the **【Scroll Lock】 → the left 【Ctrl】 → 【Enter】**, then the hot-key changes to the left **【Ctrl】**.

## Hotkey Change Setting:

Double click the right <b>【Ctrl】</b> → <b>【Num lock】</b> → <b>【Enter】</b>	Hotkey change to <b>【Num lock】</b>
Double click the right <b>【Ctrl】</b> → left <b>【Ctrl】</b> → <b>【Enter】</b>	Hotkey change to the left <b>【Ctrl】</b>
Double click the right <b>【Ctrl】</b> → <b>【Scroll Lock】</b> → <b>【Enter】</b>	Hotkey change to <b>【Scroll Lock】</b>
If the hotkey is changed to <b>【Scroll Lock】</b> , You want to change it to the left <b>【Ctrl】</b> , Then double click <b>【Scroll Lock】</b> → the left <b>【Ctrl】</b> → <b>【Enter】</b>	

## XIII. Keyboard Hot-key Operation:

Double click the right <b>【Ctrl】</b>	Select PC1 or PC2 for 2 port KVM
Double click the right <b>【Ctrl】</b> → N → <b>【Enter】</b>	Select PC1 to PC4 for 4 port KVM
Double click the right <b>【Ctrl】</b> → <b>【S】</b> → <b>【Enter】</b>	Turn on/off the auto-scan function, or you can press the scan button on front panel
Double click the right <b>【Ctrl】</b> → <b>【S】</b> → N → <b>【Enter】</b>	Set the scan interval, Can set to 8-999 seconds (The system defaults to 8 seconds)
Double click the right <b>【Ctrl】</b> → <b>【B】</b> → <b>【Enter】</b>	Turn on/off the beeping sound
Double click the right <b>【Ctrl】</b> → <b>【T】</b> → <b>【Enter】</b>	Turn on/off the detection function (default is off)
Double click the right <b>【Ctrl】</b> → <b>【R】</b> → <b>【Enter】</b>	Reset the KVM System to solve the keyboard and mouse freeze.
Double click the right <b>【Ctrl】</b> → <b>【TAB】</b> → <b>【Enter】</b>	Restore the hotkey to the default --- right <b>【Ctrl】</b>
Double click the right <b>【Ctrl】</b> → <b>【I】</b> → <b>【Enter】</b>	Turn on the emulated EDID function (default is on)
Double click the right <b>【Ctrl】</b> → <b>【D】</b> → <b>【Enter】</b>	Turn off the emulated EDID function
Double click the right <b>【Ctrl】</b> → <b>【ESC】</b> → <b>【ESC】</b> → <b>【Enter】</b>	Reset factory setting for KVM switch to solve the problem of keyboard and mouse

### Notes:

1. The “N” stands for the computer’ s Port ID number (1, 2, 3, 4) or auto scan interval time of 8 to 999 seconds.
2. When the auto scan function is activated, you can press any key on the KVM front panel, the auto scan function turns off automatically.
3. Keyboard and mouse must be plug in the positions marked with keyboard and mouse icon, so keyboard hot keys and mouse click switching will be effective.
4. For wireless mouse and keyboard; Please plug the Bluetooth receiver into the USB keyboard port for better performance.
5. For some high speed, optical, multi-functional, gaming or mechanical keyboard or mouse, please plug into the USB 2.0 port on front panel, this connection does not support hotkey or mouse switching.

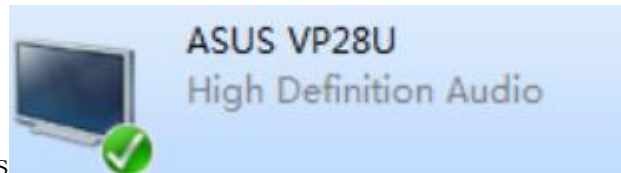
## XIV. Sound Settings:


### 1. HDMI 2.1 Sound Settings



Right click  on the desktop task bar, pop up task box

Click 'Playback devices', then jump out of the interface shown in Figure A. Then select the 'ASUS VP28U', right click and show as Figure B. And then select the 'Set as Default Device'.



It displayed tick status , which indicates successful setup. As the Figure C.

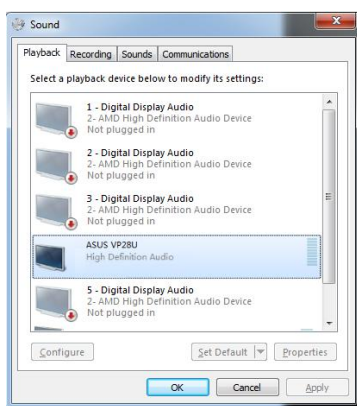


Figure A

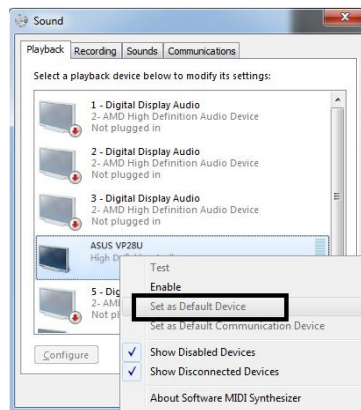


Figure B

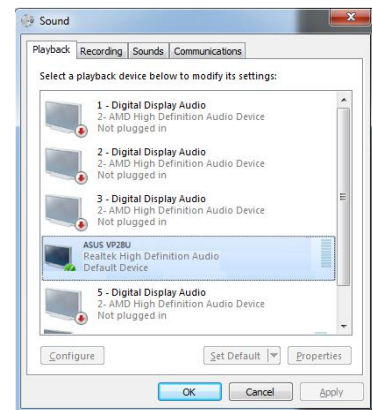




Figure C

## 2. 3.5 Interface Sound Settings

Right click  on the desktop task bar to pop up task box , click '3.5 Loudspeaker', then a dialog jumps out as Figure A. Then right click the '3.5 Loudspeaker' as Figure B. And then select the 'Set as Default Device'.



It displayed tick status , which indicates successful setup as the Figure C.

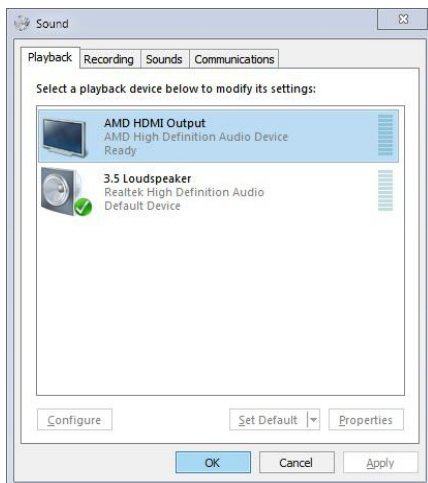


Figure A

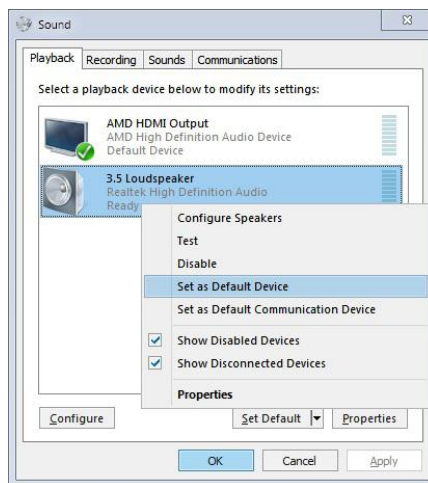


Figure B

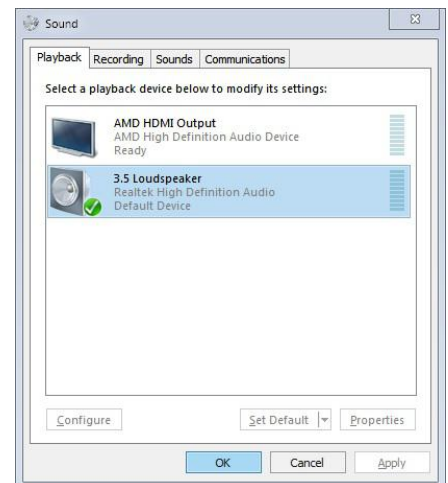


Figure C

## XV. Box Contents:

- KVM Switch
- Full set of USB 3.0 cables
- Full set of HDMI cables (cables for monitors are not included)
- Wired remote
- power adapter
- user manual in English

## XVI. FAQ & Trouble Shooting

### **Q1. Why I cannot get extended displays or only one monitor works?**

1. Make sure your computer support dual display, verify this by connecting 2 monitors to your computers directly.
2. Make sure you set your computer as extended display.
3. Make sure each computer has 2 video connections to correspondent IN A & B port (using reliable adapters if needed).

### **Q2: Monitors do not display or images display improperly:**

1. Check if the cables are connected well or swap the cables, see if it is cable problem.
2. For a same video chain, avoid using adapters on both computer and monitor side.
3. Check if the resolution settings are aligned to the supported resolution as described.
4. Try lower resolution and refresh rate.
5. If it works well for sometime then stops work, try pressing the right Ctrl twice, then Esc 3 times, then Enter to reset the KVM, make sure hotkey is on and the keyboard is plugged in the USB keyboard port when doing so.

### **Q3: Keyboard and/or mouse do not work.**

1. Make sure the included USB cable is well connected to the computers and the other end of USB is plugged in correspondent USB (Type B) port on the KVM, and KVM is powered on.
2. If keyboard and mouse stop working after a period of time, try double click the right Ctrl, then triple click ESC ,then Enter to restore the hotkey to factory setting.
3. Refer to Q4 for special keyboard and mouse like gaming, multi-media and mechanical type.

### **Q4. My gaming mouse or mechanical keyboard functions are not working. What shall I do?**

Some special keyboard and mouse may not work properly from the designated rear USB ports, If so, please try the following:

1. Plug your keyboard or mouse into USB 3.0 HUB ports.
2. Or turn off the hotkey function by pressing the hotkey on/off key on front panel, then the dedicated USB keyboard and mouse ports will be changed to standard USB3.0 ports, Plug the wired remote switcher into KVM and use it to switch between computers

### **Q5. Does it work with adapters?**

Yes, but depends on the adapter quality which is beyond what we can control. and the resolution output is subject to the adapters being used. DP monitors are preferred, or HDMI monitor with reliable DP to HDMI adapter. VGA and DVI monitor are not preferred.

### **Q6. How can I turn off the beep sound?**

You can double click the right Ctrl → B → Enter to turn the beep on/off. If in case your keyboard does not work with the hotkey, try another generic keyboard.

### **Q7. How Can I deactivate the mouse switching function?**

1. Simply plug your mouse into on of the USB3.0 Hub Ports
2. Or turn off mouse hotkey by double clicking the right Ctrl then M then Enter.

### **Q8. I have other issues which are not listed above:**

Please contact seller for support needed, we will reply within 24 hours during business days.