

Sleep Play Go

Getting Started

Allow your pet to play and sleep around and in Sleepypod for at least a week before using it as a carrier. When you introduce the Sleepypod to your pet, start with the top removed. Toys and treats can be placed in and around the bed to encourage use. In cool weather try adding our optional Warmer Kit. The more positive associations your pet creates with Sleepypod as a bed, the more your pet will enjoy it as a carrier.



Next, zip the top on and tuck open the center. Many pets will enjoy the privacy and prefer the top always left on.

As your pet becomes more comfortable in their Sleepypod, zip your pet in and go for a quick walk around the room while encouraging your pet verbally. Put your Sleepypod back down and open top to allow your pet to exit freely. Repeat several times to acclimate your pet to traveling in the Sleepypod before undertaking any major travel.

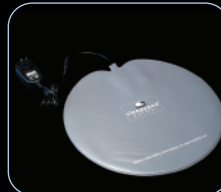


Accessories (Sold Separately)

Warmer Kit

The Sleepypod Warmer Kit will provide safe and efficient warmth up to 102°F/39°C when plugged in at home or in the car. It will only feel slightly warm to the touch when properly installed between the Ultra Plush bedding and the foam liner.

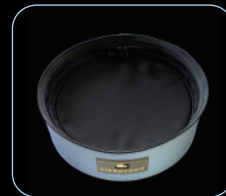
When not in use unplug the adapter and tuck the end of the cord inside the bedding.



Air Mesh Bedding

For warmer weather the Air Mesh can replace the Ultra Plush bedding, suspending your pet above the base. We chose a highly durable polyester mesh that allows air circulation all around your pet.

Air Mesh can be conveniently stored underneath the foam bed when you are using the Ultra Plush Bedding and is easily maintained with a quick vacuum or wipe with a damp cloth.



Car Travel

Place your Sleepypod in a seat without airbags or with the airbags disabled.



Wrap the seat belt around the Sleepypod.



Buckle the seat belt.



Strap the shoulder belt in the top handle.



Secure the lap belt in the strap on the base.



Tighten up any slack.

Keep the top zipped closed to keep your pet safely inside.

Take Apart

1 Unzip and remove the top dome.

* Never lift the top off; rotate the top and base apart.

2 Unzip the bedding.

3 Lift the Ultra Plush bedding and foam liner out of the bed.

4 Flip down the edge of the foam liner to expose the lower zipper.

5 Unzip the Ultra Plush bedding from the foam bed.

* Remove the Warmer Pad.



Cleaning

The Ultra Plush bedding is
 machine washable in cold water on the gentle cycle with like colors: tumble dry low, no bleach, no iron.

The foam liner can be
 machine washed and air dried.

A lint roller or vacuum will collect pet hair from the bedding. All other components can be wiped clean with a damp cloth.

Put together

4 Zip on the top dome.

3 Zip the upper zipper of Ultra Plush to the inside of the bed.

2 Lower the bedding and foam liner in the bed and rotate to line up the zippers.

1 Zip the Ultra Plush bedding to the foam liner. Flip up the edge of the the foam liner.

* Zip the Ultra Plush to foam bed zipper half-way then insert the Warmer Pad.

* Make sure the Warmer Pad cord sticks out before zipping at each step.

Warmer Pad Cord Routing



Safety

Please read all instructions before use. Sleepypod is not responsible for any damage caused by improper use. This product is not intended to be used as a restraining device for aggressive animals or animals that dig, chew, or paw aggressively. Never leave your pet unattended.

