

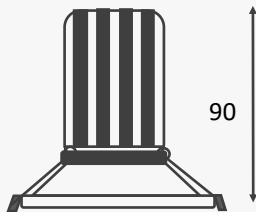
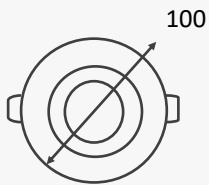


## Multi-Star 1025 adjustable round Modular Downlights

SKU: SL-MSM12WTC-1025 (Tri-colour 3000k, 4000k, 5000k)  
SKU: SL-MSM12W3K-1025 (CREE X LAMP CRI93)  
SKU: SL-MSM12W4K-1025 (CREE X LAMP CRI93)



MSM12W



The Multi-Star range of luminaires is named for its multitude of light and fitting options.

The 1025 round Module fittings are an adjustable recessed down light fitting consisting of a 100mm diameter x 25mm high frame that has the option of being black, white & White with black inner.

This type of downlight is a common classic adjustable downlight fitting because of its standard 90mm cut out and adaptability to many different general lighting and accent lighting situations.

<b>Voltage</b>	240VAC
<b>Power</b>	12 watt
<b>Emitting Colour</b>	Warm white, Natural white, Daylight
<b>Kelvin (CRI)</b>	3000k, 4000k, 5000k
<b>Lumens/watt</b>	86.6 (ww) 93.3 (nw) 100 (dl)
<b>Delivered lumens</b>	1040 (ww) 1120 (nw) 1200 (dl)
<b>Dimensions</b>	100mm diameter x 25mm high
<b>Colour rendering</b>	>83 (tri-color), >93 (CREE X-Lamp)
<b>IP rating</b>	IP20
<b>Dimming</b>	Yes
<b>Beam angle</b>	15°, 28°, 40°, 60° - reflector 24°, 36°, 60° - UGR19 lens
<b>Fitting colour</b>	White, Black, White with black inner
<b>Cut out</b>	90mm
<b>Warranty</b>	3 years

# MultiStar - Choose your options

D = Diameter  
C/O = Cut out  
H = Height  
W = Width

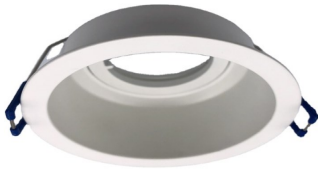


## D100 x H25 Adjustable small round - 90mm cut out

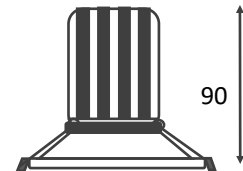
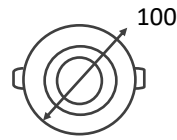
Low glare Lens angle 24°, 36°, 60°

Beam angle 15°, 28°, 40°, 60°

SKU: 8042



1025



white



Black



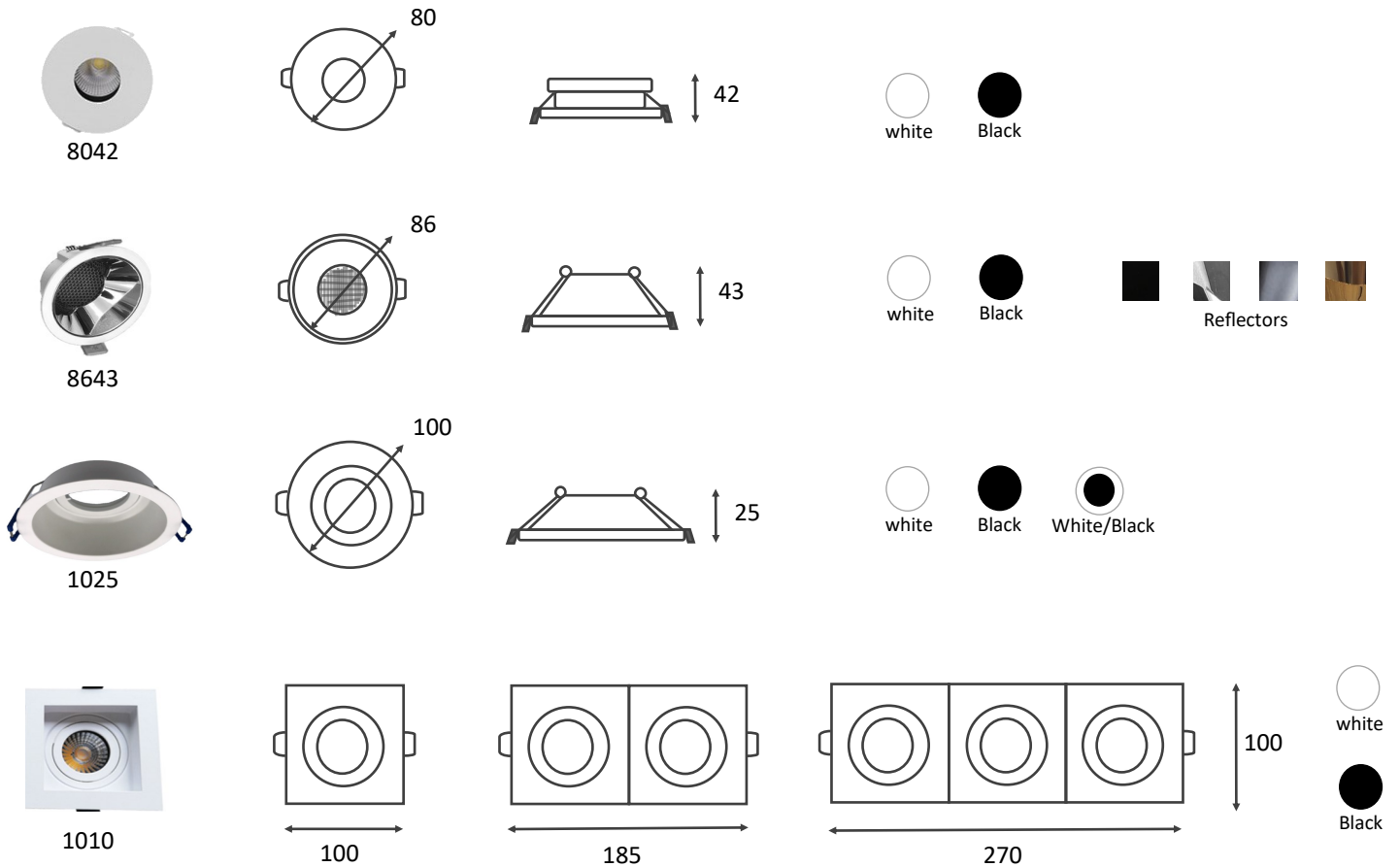
White/Black

### Example Product code for this product:

SL-MSM12W4K-1025WHBK-LG60

Starco lighting - multi-star module 12 watt 4000k (neutral white) - 1025 white frame with black inner - Low glare lens angle 60°

**Other fitting options:**



**Product case study and code explanation:**

Lets say you have a shop that sells flower vases displayed on medium size round tables. Your ceilings are black and 4 meters high with the light fittings positioned above your product but they are off centre. Therefore you need an adjustable fitting to shine onto your vase.

Based on your store aesthetic you choose a '100mm adjustable black fitting with 90 degree cut out' and a '40° beam angle' will be perfect to shine on the vase table. You want it to be bright and are not worried about glare so a 'direct beam angle without low glare lens is ok'. You want a crisp 'warm white (3000k) light with high colour reproduction' to highlight the colours in the vase. Below is your product code.

**SL-MSM12W3K-8643BK-BA40RRG**

Product code breakdown:

SL-MSM12W3K-1025BK-BA40

Starco lighting-multi-star module 12 watt 3000k-1025 black frame-Beam angle 40°



**STARCO LIGHTING**

PH: 0451 366 669  
 info@starcolighting.com.au  
 www.starcolighting.com.au  
 Unit 6, 11 Eileen Street  
 Underwood QLD 4119