

WARRANTY

At The Beachwaver Co.™ we want you to be thrilled with our tools. We want you to look and feel beautiful. We believe in the quality of our tools and test each iron thoroughly. We welcome your feedback and in the event of any problem, we welcome the opportunity to make it right!

The Beachwaver Co.™ will replace your styling iron for one year from the date of purchase if the product is defective in materials or workmanship. In no event shall The Beachwaver Co.™ be liable for any special, incidental or consequential damages for breach of this or any other warranty, express or implied, whatsoever. Any implied warranties, obligations or liabilities, including but not limited to the implied warranty of merchantability and fitness for a particular purpose shall be limited in duration to the one year duration of this written limited warranty. The warranty does not apply in the following scenarios: any unauthorized party opened the product in attempt to fix the product, normal wear and tear, purchasing from an unauthorized seller, damage caused by misuse or mishandling, or due to user's failure. Warranty application is determined in the sole discretion of The Beachwaver® Co.

YOU MUST REGISTER YOUR TOOL TO BE ELIGIBLE FOR WARRANTY!

Please visit <http://www.beachwaver.com/pages/warranty> for information on how to register your iron or to make a warranty claim.

THREE DIFFERENT LOOKS



SLEEK STRAIGHT

Create 1/2 inch sections. Hold iron parallel to the root. Glide smoothly toward ends.

S-SHAPED WAVES™

Section hair. Create a S pattern by turning your wrist up and then down while moving toward ends.

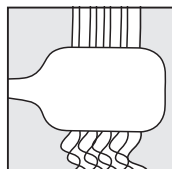
BLOW OUT FINISH

Place attachments on. Section hair. Lift root up while turning wrist under as you glide in one fluid motion toward ends.

TIPS



SECTION WITH DARBY CLIPS TO MAKE STYLING EASIER!



BRUSH SECTION TO SMOOTH BEFORE USE

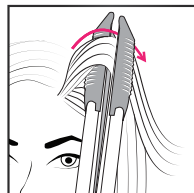
* darby clips and brush are sold separately

FOR MORE TIPS AND TRICKS VISIT:

BEACHWAVER.COM

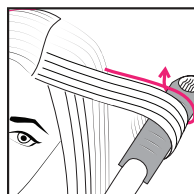
HOW TO USE

BLOW OUT FINISH IN MINUTES!



STEP 1

Place attachments on. Section hair. Start by lifting up at the root and turn wrist under.



STEP 2

In one fluid movement, roll and glide through the ends of your hair.



REPEAT

Continue smoothing each section for gorgeous hair!

COAST Pro™

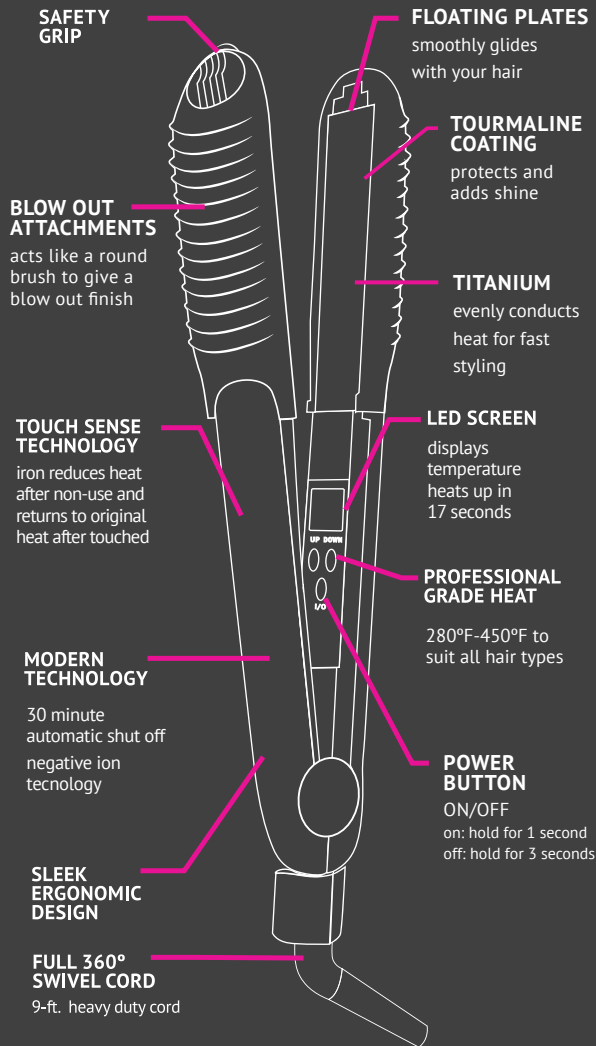
TITANIUM STYLING IRON



Small
COAST Pro™
ATTACHMENTS
Included

 BEACHWAVER Co.™

COAST PRO™



SAFETY INSTRUCTIONS

• READ ALL INSTRUCTIONS BEFORE USE

When using iron, especially when children are present, basic safety precautions should always be followed, including the following:

To reduce the risk of death by electrical shock:

1. Always "unplug" it immediately after using.
2. Do not use while bathing.
3. Do not place or store iron where it can fall or be pulled into a tub or sink or other vessel containing water.
4. Do not place in water or other liquids. If the iron falls into water, "unplug" it immediately. DO NOT REACH INTO WATER!

WARNING: To reduce the risk of burns, electrocution, fire, or injury to persons:

1. Use the iron only for its intended purpose as described in this manual.
2. Never operate the iron if it has a damaged cord or plug, if it is not working properly or it has been dropped, damaged or dropped into water.
3. Keep cord away from heated surfaces.
4. Do not let eyes or bare skin touch heated surfaces.
5. Do not place heated unit directly on any surface while it is hot or plugged in.
6. Do not use if hair has been treated with flammable products, like hair spray.
7. Close supervision is necessary when your iron is being used, especially when children are nearby.
8. Do not leave the iron unattended.
9. Do not use while sleeping.
10. Never place on a soft surface such as a bed or couch or towel.
11. Do not use outdoors or operate where aerosol (spray) products are being used or where oxygen is being administered.
12. Iron will be hot when in use.
13. Do not pull, twist or wrap cord around iron.
14. Do not allow children to use.
15. Do not use iron when you are impaired in any way.
16. Always turn iron off before unplugging. Iron must be completely cooled before storing.
17. Do not use an extension cord with this iron.
18. Do not attempt to touch the hot surface of the iron, as it is hot and can cause injury, burns or pain.
19. Do not use with a voltage converter.
20. Do not use without the assistance of a mirror.
21. Never drop or insert any object into opening or hose.

DO NOT USE WITH AN ADAPTER OR CONVERTER

This appliance has a polarized plug (one blade is wider than the other). As a safety feature, this plug will fit in a polarized outlet only one way. If the plug does not fit fully in the outlet, reverse the plug. If it still does not fit, contact a qualified electrician. Do not attempt to defeat this safety feature.

WARNING: THE COAST PRO™ TITANIUM STYLING IRON IS AN ELECTRICAL APPLIANCE AND REACHES HIGH TEMPERATURES. USE OF IRON REQUIRES CONSTANT SUPERVISION AND SHOULD BE KEPT AWAY FROM WATER.



OPERATION

To turn the Coast Pro™ Titanium Styling Iron on, press and hold the ON/OFF button for 1 second. The temperature will illuminate and can be adjusted by pressing the UP/DOWN buttons. It is important to always select the proper heat setting for your hair type.

Fine or damaged hair:	280° F - 350° F
Medium or normal hair:	350° F - 400° F
Thick or coarse hair:	400° F - 450° F

USER MAINTENANCE

The Coast Pro™ Titanium Styling Iron is virtually maintenance-free. If surface becomes dirty, turn off, unplug iron and when it is cool, wipe the exterior with a cloth. If anything abnormal occurs, contact customerservice@beachwaver.com. Do not attempt to repair iron yourself. Attempting to repair iron yourself voids warranty.

ADD AND REMOVE ATTACHMENTS

**Remove and add while iron is turned off and cool.*

ADD ATTACHMENTS:

Hold iron closed. Slide attachments onto the iron until the two arrows match. Push down until you hear them click into place.

REMOVE ATTACHMENTS:

At the base of the attachments, push upward with your thumb to unlock.

STORAGE

When not in use, turn off and unplug the styling iron. Allow the iron to cool, and store out of reach of children in a safe, dry location. Never wrap the cord around the iron as this may cause premature wear of the cord and may lead to cord damage that is not covered under the manufacturer's warranty. Handle the cord carefully to extend cord life, and avoid jerking, bending, or twisting the cord, especially at the plug connection.

NOTE: Always remember to turn off styling iron BEFORE unplugging to avoid any risk of electrical shock or damage.