

INFINITY CAPTURE is an intuitive user interface which includes all of the basic features needed to control your INFINITY camera and capture images.



INFINITY CAPTURE

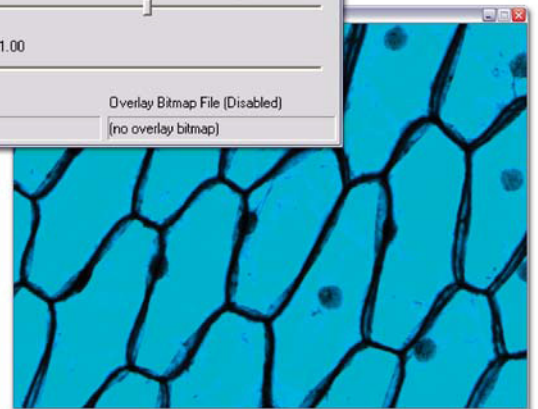
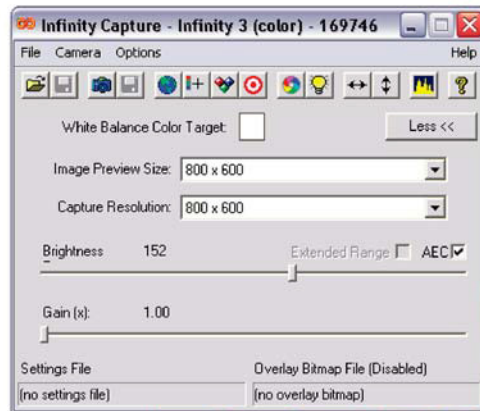
IMAGING SOFTWARE

Lumenera's entry-level INFINITY CAPTURE imaging software is included with all INFINITY USB 2.0 cameras.



Software Features:

- Real Time Video Preview
- Automatic/Manual Exposure
- Separate Preview and Capture Controls
- Overlay Bitmaps
- Automatic/Manual White Balance
- Flat Field Correction
- Manual Hue and Saturation
- Highlight Saturated Pixels
- Manual Preview Quality
- Manual Preview Zoom Level
- Multiple Image Averaging
- Preview Histogram
- Global Electronic Gain
- User Defined Light Source
- Manual Contrast/Brightness/Gamma
- Alpha Blended Bitmaps
- Movie Production



Additionally, a USB 2.0 plug-and-play interface removes the need for framegrabbers and allows fast video. Included is a TWAIN interface, allowing the camera to be used with 3rd party software applications.

www.lumenera.com

7 Capella Court, Ottawa, ON, K2E 8A7
scientificsales@lumenera.com

