

INFINITY ANALYZE

Produce high quality images with INFINITY ANALYZE, a complete image capture and processing software package for advanced imaging in life science, clinical and industrial research markets. Easily capture and process images with excellent reproducibility and accuracy. The combination of INFINITY ANALYZE and INFINITY USB 2.0 microscopy cameras create the perfect solution for all your imaging needs.

Flexible Camera Control

- Produce high quality images using our advanced software features
- Optimize workflow by customizing the layout to your preference
- Save an unlimited number of unique user settings
- Easily manage and organize images with intuitive save features

Basic Controls

Real time preview, manual/auto exposure, white balance, gain, brightness, gamma, saturation, user friendly archive, intensity, hue, image orientation, averaging, subsampling, light source selection, clockwise/counter clockwise, flip vertical, flip horizontal, flip diagonal, zoom preview, cascade, tile horizontal, tile vertical, INFINITY3-1 cooling control.

Capture Options

Single capture, time lapse, auto increment filename and single key capture.



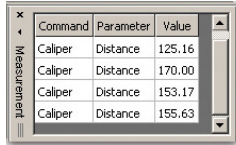
Customized Image Processing and Archiving

- Quickly process, archive and save images in a variety of formats
- Apply and reproduce customized measurements and annotations with ease
- Effortlessly manage and retrieve images within the built-in database

Highlights Include:

Measurement

Point-to-point, polyline, circle from 3 points, area, perimeter, polygon, manual counting, light density, micrometer, grid/circle overlay, user guided cell counting, manual calibration, and drag and drop data to excel.



Command	Parameter	Value
Caliper	Distance	125.16
Caliper	Distance	170.00
Caliper	Distance	153.17
Caliper	Distance	155.63

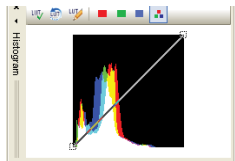
Annotation

Line, rectangle, round rectangle, ellipse, polygon, arrow, text and micrometer bar.



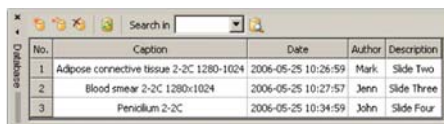
Advanced Image Processing

Multiple image averaging, subsampling, flat field correction, denoise, smooth, adaptive edge emphasis, sketch, equalization, amplitude depletion, darkfield simulation, photometric transform.



Database/Archive

Custom database system that is accessible when the software is running. All image information/content including the quantitative measurements, date of creation, author and description can be archived and easily stored locally on your PC or on a network drive.



No.	Caption	Date	Author	Description
1	Adipose connective tissue 2-2C 1280-1024	2006-05-25 10:26:59	Mark	Slide Two
2	Blood smear 2-2C 1280x1024	2006-05-25 10:27:57	Jenn	Slide Three
3	Penicillium 2-2C	2006-05-25 10:34:59	John	Slide Four

Languages

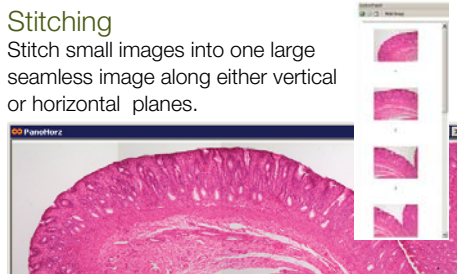
In addition to English, INFINITY ANALYZE is now available in Latin Spanish, Castilian Spanish, Italian, Russian, Japanese, Chinese, Korean and French. Life scientists, as well as clinical and industrial researchers worldwide are now offered the same level of convenience, comprehension and satisfaction as English-speaking users when working with INFINITY USB 2.0 cameras.

Video Tutorials

A series of video tutorials for INFINITY ANALYZE software is available on our website at: lumenera.com/support/microscopy/training.php.

Stitching

Stitch small images into one large seamless image along either vertical or horizontal planes.



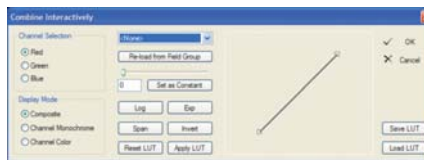
Full Screen Mode

The live preview and captured images are displayed at full screen size with one keystroke / menu selection. Take advantage of the full size of your display.



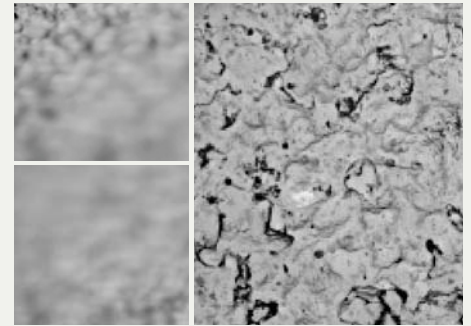
Fluorescence Image Composition

Create a composite image from monochrome fluorescent images captured through mono channel filters, and apply RGB Look-Up-Tables (LUT) for creating color composites.



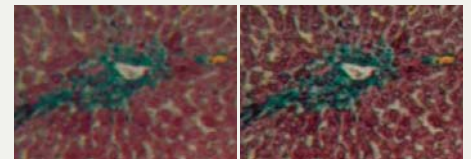
Advanced Features Module*

Multi-Focus Enhancement



Creates depth of focus using multiple images from a stereo or compound microscope. The resulting image is focused from top to bottom with seamless transitions.

Spherical Aberration Correction



Reduce the blur caused by the increased refraction of light rays hitting the lens near its edge. The resulting image closely resembles the areas where the light strikes near the center resulting in crisp and clear images.

* Advanced Features Module is a separately priced option. Contact your local dealer for more information.

Software Appearance and Help Menus

Customize the layout of INFINITY ANALYZE to optimize your workflow through the addition or removal of tool bars and work spaces, as well as access help menus for each software feature.

Field Menu

Field Group

A field group menu provides a thumbnail worksheet to easily manage a variety of images. The field menu is a destination for captured images or can act as the input for multiple image processing functions such as fluorescent combination or stitching options.

User Defined Interface

Add and remove tool icons to simplify your view.

Help Section

Active help boxes for each software function are provided.

