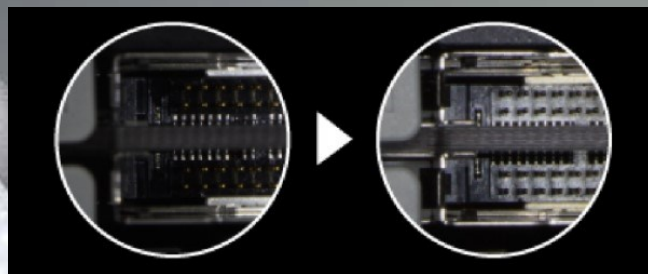


UNITRON®

15875 LED Ring Illuminator



See deeper into
objects with the
near-vertical LED!

54 high-brightness
white LEDs generate
a brilliant 50,000 lux.

- Stepless light intensity Adjustment (0-100%)
- Aluminum die-cast frame
- 5 filter options available
- Battery power option
- Attaches directly to a stereo microscope or auxiliary lens



EXCELLENCE BY DESIGN

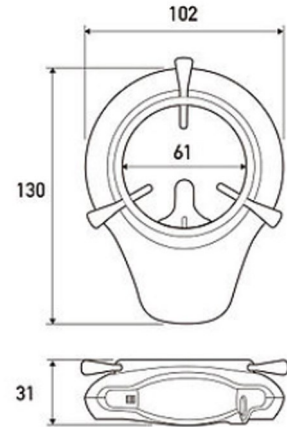
ISO
9001 • 14001

UL
LISTED

CE RoHS



Finally . . . An ultra-bright ring illuminator that allows you to see more in your samples!



Adapters available for Olympus SK & VMZ and Carton stereo microscopes.

(Dimensions shown in mm)

Double-row ring lights provides high-brightness — twice that of other ring lights!
The short vertical LED illuminates the sample from a perpendicular position.

Fits most stereo microscopes including:
UNITRON: Z730, Z850 & Z10 Series
ACCU-SCOPE: 3075 & 3078 Series

SPECIFICATIONS

Model	15875
Max Illumination	50,000+ lux; 4600 footcandles @ 100mm
Lighting Method	PWM (Variable light intensity 0-100%)
Mounting Diameter	Φ40mm—Φ61mm Φ60mm—Φ70mm (when using CAT# 15875-6070AD)
Inner Diameter	61mm
Color Temperature	Approx. 8000K Approx. 5000K when using a warm color filter
Rated Input Voltage	AC 100v-240v
Power Consumption	4w
Conformity Standard	PSE
Vertical Lighting Unit	Removable; optional long LED
Warranty	2 year limited warranty

Optional Accessories

Filters (Snap on)	Clear filter, diffusing white filter, warming filter, amber filter, blue filter (sold separately or as a set)
Stereo Microscope Adapters	Olympus SZ, Olympus VMZ, Carton Contact us with any special requirements
Battery Pack	Uses 8 AA batteries for cordless operation (attaches to pole stand)

Design, features and specifications are subject to change without notice.

Optional Snap-in Filters Installed With One Touch! Sold individually or as a set.



Clear Filter CAT# 15875-CF

A colorless and transparent filter that protects the LED from dust and splatter.



Diffusing Filter CAT# 15875-RS

Converts LED light into soft diffused light reducing the reflection of LED bulbs on shiny surfaces such as metal or resin.



Warming Filter CAT# 15875-WF

Converts white light to warm light close to sunlight reducing eyestrain.



Amber Filter CAT# 15875-AF

Converts white light to amber light for machine vision, scratch inspection, etc.



Blue Filter CAT# 15875-BF

Converts white light to blue light for machine vision, visible blue light observation, etc.