

D-Moticam 1080

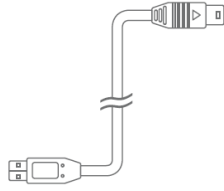
Quick Start Guide



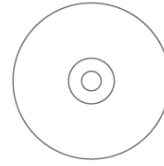
Contents of Moticam 1080



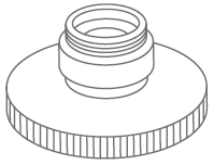
Moticam 1080



USB Cable



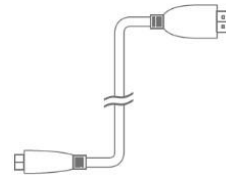
Motic Images application CD



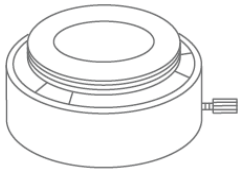
Focusable Lens



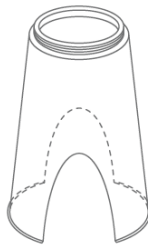
Calibration Slide



HDMI Cable



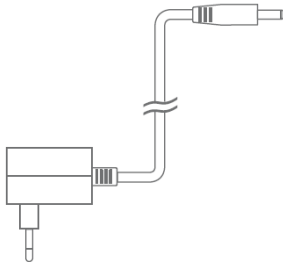
Eyepiece Adapter (2)



Macro Tube



C-Ring

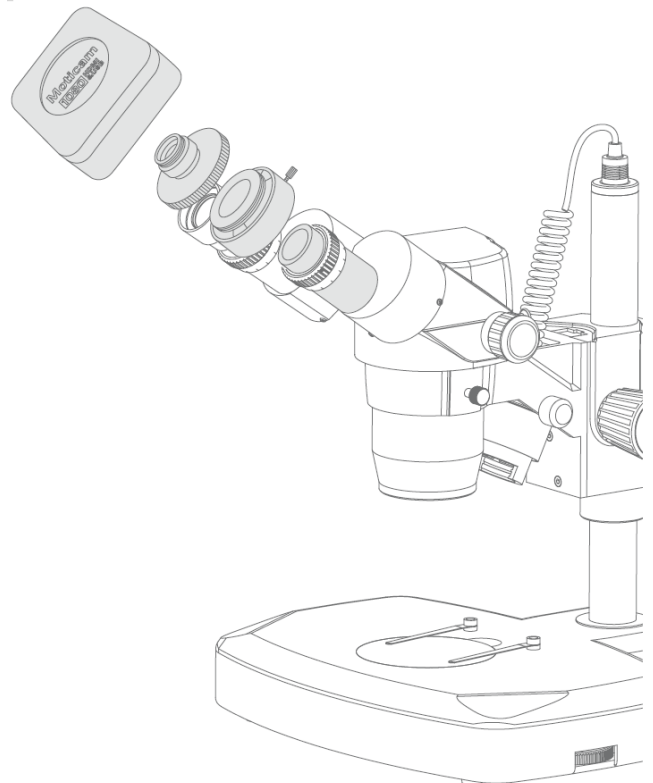


110V-240V Power Supply

Connecting your Moticam 1080

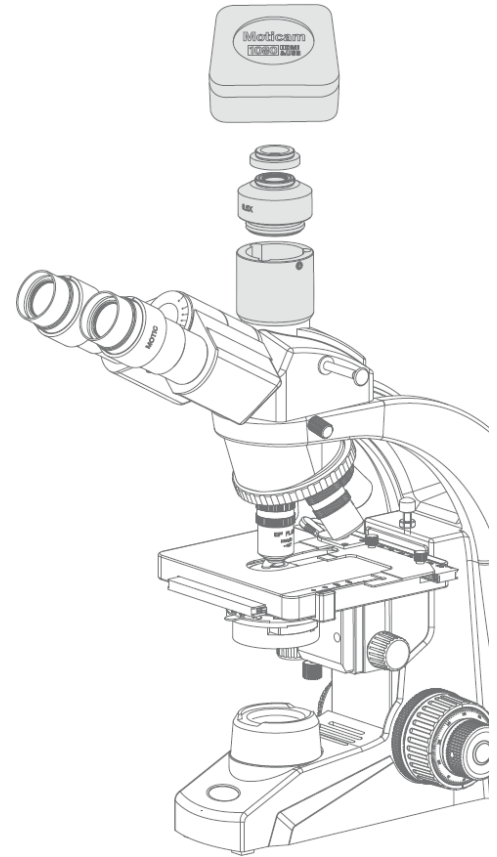
Using the camera on a eyepiece

1. Install the Motic Images Plus application program from the CD included.
2. Remove the Dust Cap from the camera and attach the focusable lens.
3. Choose the right size eyepiece adapter and attach this to the focusable lens.
4. Attach the assembly to your microscope's eyepiece by tightening the centering screws on the eyepiece adapter.
5. Connect the USB cable (A to A USB Cable) onto the camera and then plug into the computer.
6. Install the driver if necessary by following the instructions on screen. The driver for the Moticam 1080 is located in the Moticam 1080 subfolder on the CD.

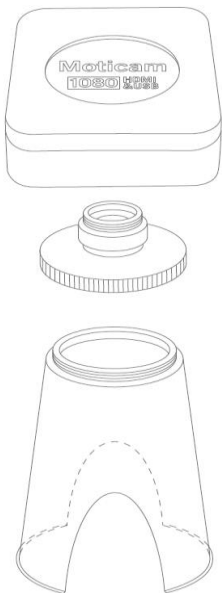


Using the camera on a Trinocular Microscope

1. Install the Motic Images Plus application program from the CD included.
2. Remove the Dust Cap from the camera and attach the microscope's C-Mount adapter (Please Note the C-Mount adapter is specific to your microscope.) Depending on the type of adapter and microscope, the C-Ring may be necessary between the camera and the C-mount adapter.
3. Connect the USB cable (A to A USB Cable) onto the camera and then plug into the computer.
4. Install the driver if necessary by following the instructions on screen. The driver for the Moticam 1080 is located in the Moticam 1080 subfolder on the CD

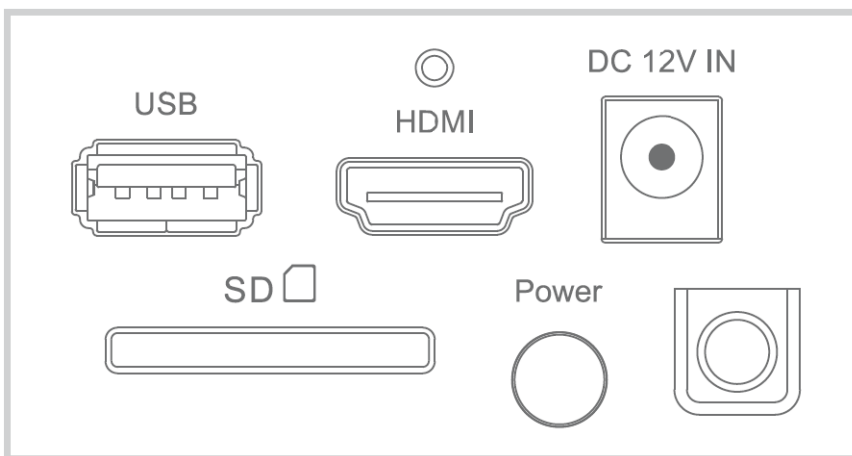


Using the camera as a Macro Camera



1. Install the Motic Images Plus application program from the CD included.
2. Remove the Dust Cap from the camera and attach the focusable lens.
3. Attach the Macro Tube onto the lens.
4. Place the assembly over the item you wish to view and ensure there is adequate lighting. If necessary, an LED desk lamp is a good solution.
5. Connect the USB cable (A to A USB Cable) onto the camera and then plug into the computer.
4. Install the driver if necessary by following the instructions on screen. The driver for the Moticam 1080 is located in the Moticam 1080 subfolder on the CD.

Controls and Ports on the Camera



included power supply.

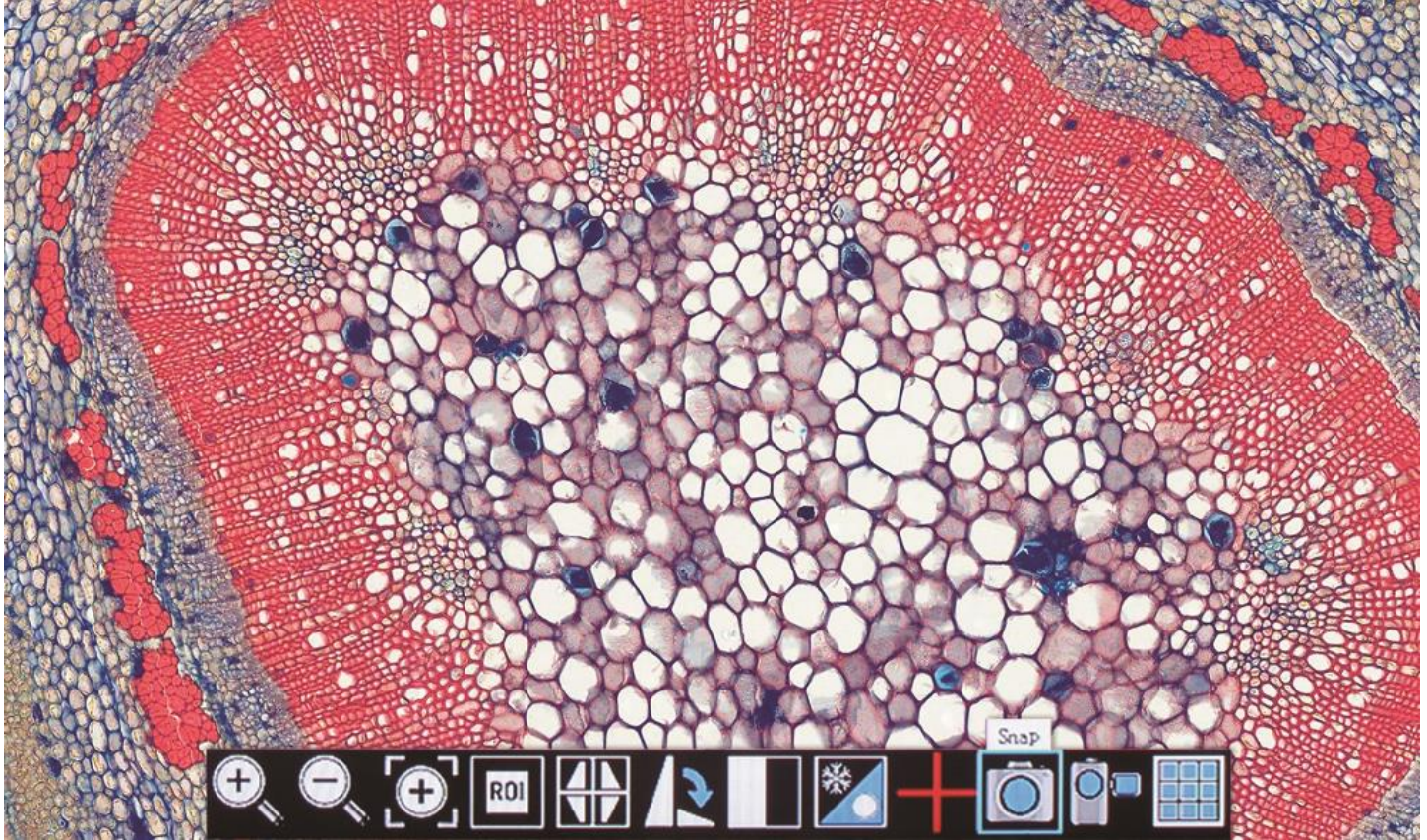
4. SD Card slot for capturing images and video files onto an SD card. The maximum size compatible is 32GB SDHC.
5. Pressing this button will turn the camera on and off.

1. The USB connection can be used to connect the Moticam 1080 directly to a computer and use the camera with the provided Motic Images Software. (*A to A USB cable) The USB port can also be used to connect a USB mouse so that the camera can be controlled without a computer. (Sold separately)
2. HDMI port for connecting to an HDMI ready display (cable is provided)
3. Power port for connecting the

On Screen Display Controls

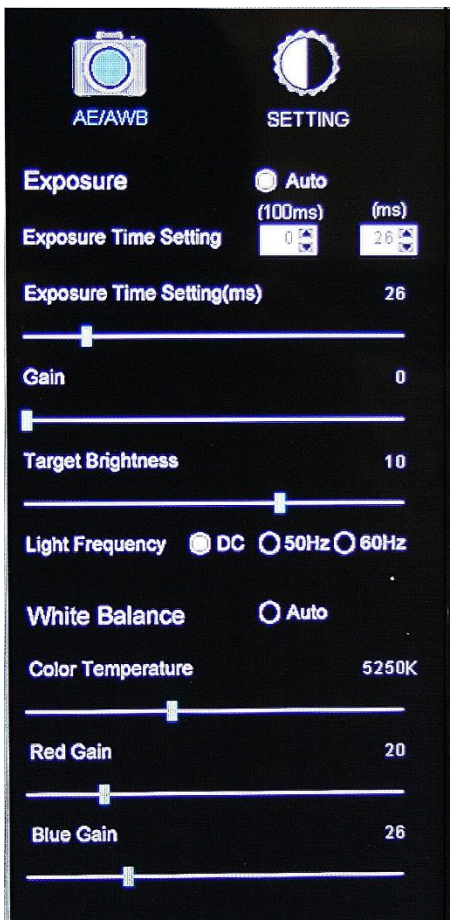
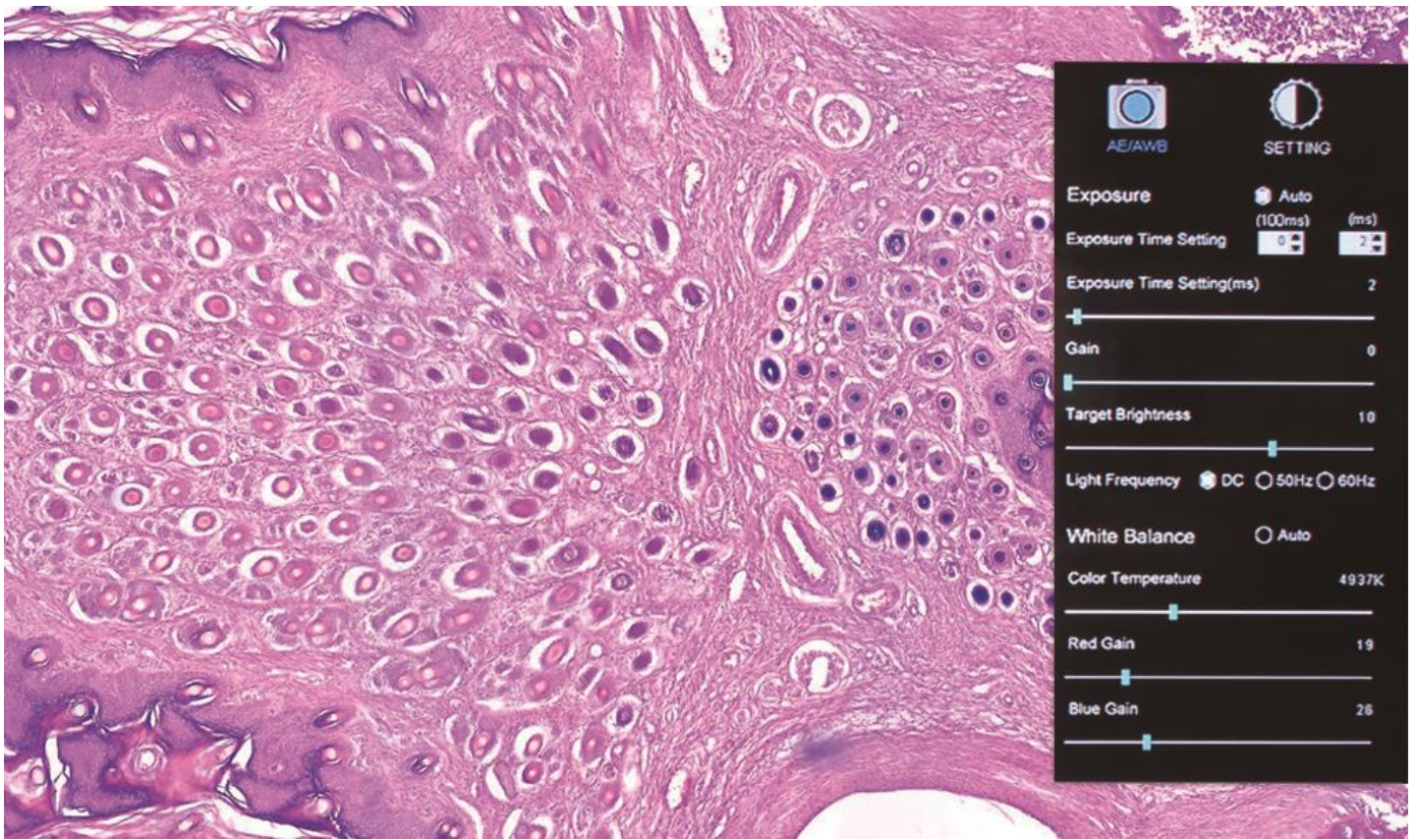
When the camera is connected to an HDMI display and controlled through a USB mouse, you can simply move the mouse cursor to the right to activate the on-screen function display for capturing images and also for adjusting various aspects. All images can be captured to 32GB (Max) SD card for transfer to computer later.

Live Image and Capture Controls



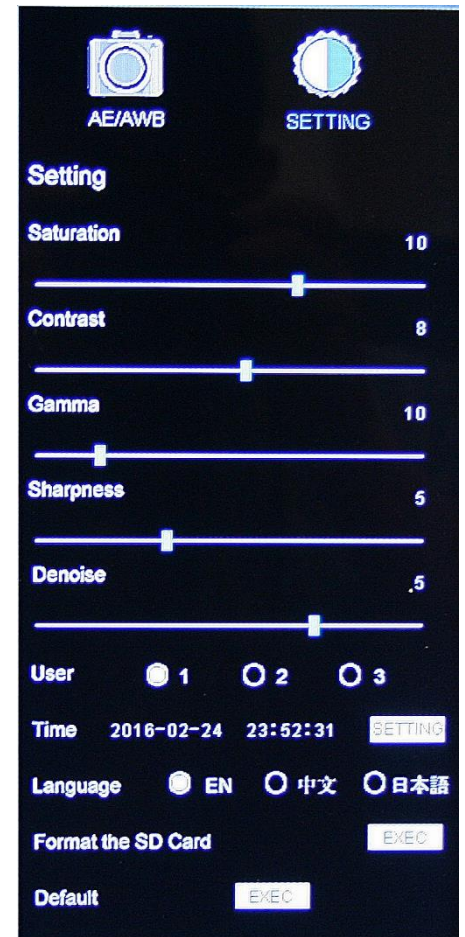
1. Zoom In: Zooms in on an area of the live image.
2. Zoom Out: Zooms out on an area of the live image.
3. Magnifier: Zooms in (full screen) a selected region of live image.
4. Region of Interest: Allows user to view only a specific area of live image.
5. Mirror: Changes image view vertically or horizontally.
6. Rotate: Rotates the image from 90 to 360 degrees.
7. Split: Compares a capture image with a live image.
8. Freeze: Freeze live image.
9. Crossline: Inserts a crossline on the live image.
10. Snap: Capture image on SD Card as JPEG.
11. Record: Record 1080 video onto SD Card as an AVI.
12. Playback: Watch or look at previous images or videos captured to SD card.

Image Adjustment Controls



AE/AWB Menu allows you to adjust: Exposure, Gain, Gamma, Brightness, Light Frequency, White Balance, and Color Temp.

Settings Menu allows you to adjust: Saturation, Contrast, Gamma, Sharpness, Digital Noise, Save Individual User settings, Time setting, Language, Format the SD Card, and Restore all settings to Default.



CONNECTING TO COMPUTER

First take out your Motic Images software disk and insert it into your CD /DVD drive in your computer or laptop.

PC USERS: Follow the on the screen instructions for installing the software.

OSX USERS: Simple drag and drop the Motic DMG file to your desired folder. The software can then be run directly from the DMG file.

Then connect your D-Moticam 1080 to the computer or laptop with the A to A USB cable include with your camera. This is the USB cable with the two flat ends. One end plugs into your camera and the other plugs into your computer or laptop.

PC USERS: The camera uses the Motic USB2 driver located on disk under the driver folder.

OSX USERS: The drivers are loaded automatically when the camera is plugged in.

You may now open the Motic Images software. See help guides for software below.

MOTIC IMAGES SOFTWARE - PC

Full Help Menu

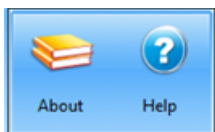
The full software manual for Motic Images is accessible within the software's main page.

To begin, open the Motic Images Software.

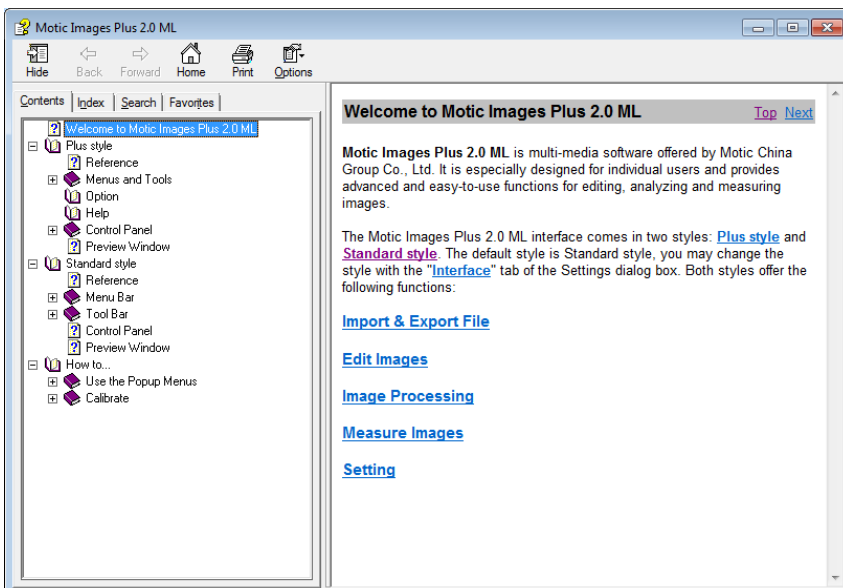
At the top of main screen find the menu tab labeled Help:



Click on Help and then select the help option:



This will open the Motic Images help file contents, containing the full help menu:



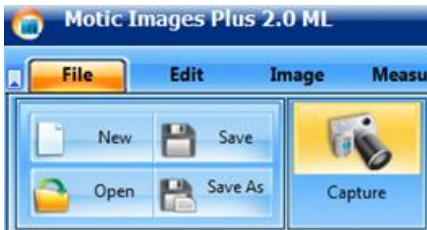
Motic Live Imaging Module - PC

Full Help Menu

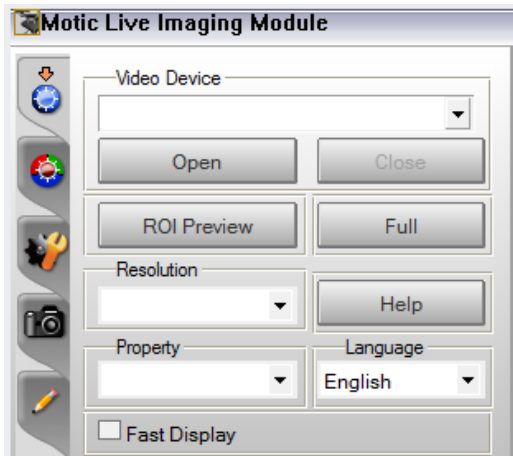
The full Live Imaging Module manual is accessible within the live Imaging main page.

To begin, open the Motic Images Software.

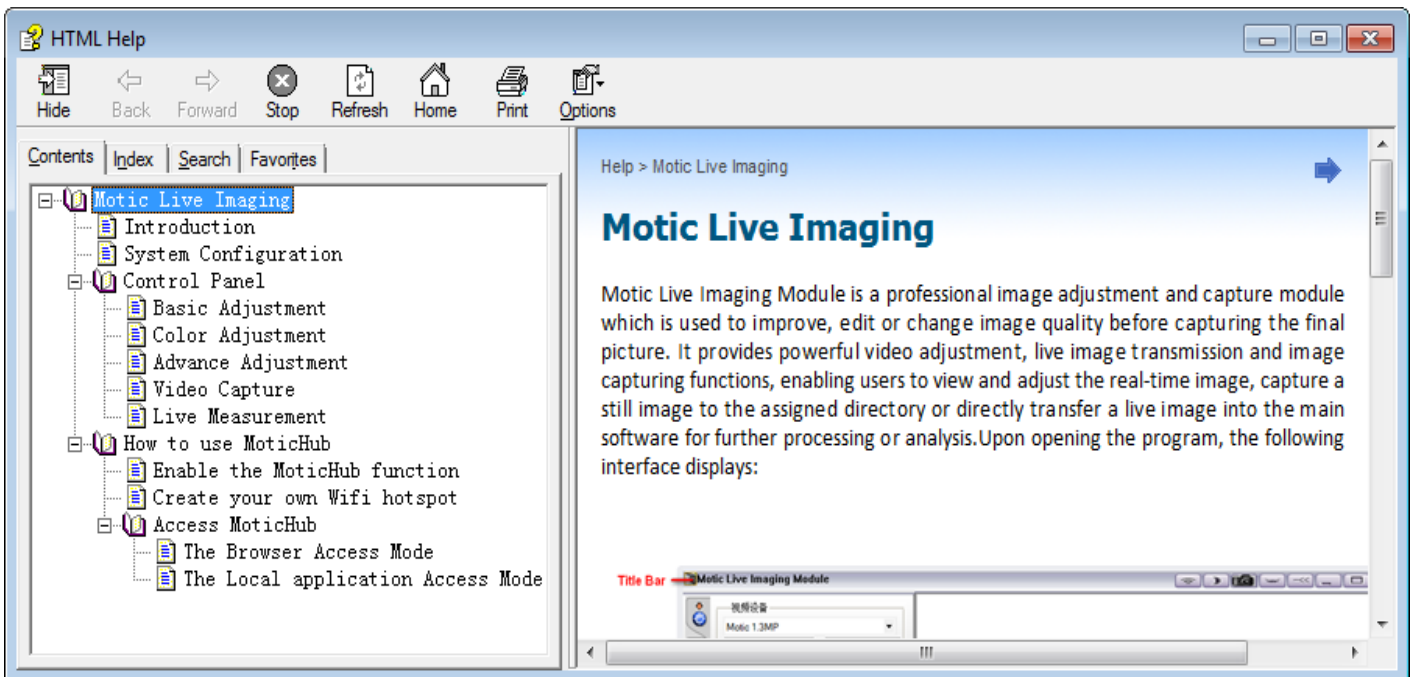
At the top of main screen find the menu tab labeled File and click on Capture:



Once the Motic Live Imaging Module has opened, click on Help:



This will open the Motic Live Imaging Module help file, containing the full help menu:



MOTIC IMAGES SOFTWARE - MAC

The full software manual for Motic Images is accessible within the software's main page.

To begin, open the Motic Images Software.

At the top of main screen find the menu tab labeled Motic Images Plus Help:



This will open the Motic Images Help Manual:

