

Excelis MPX

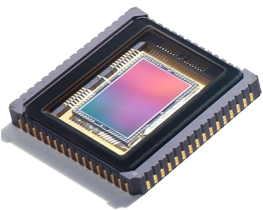
HIGH RESOLUTION MICROSCOPY CAMERA

The new *Excelis* MPX-6C CMOS microscopy cameras deliver exceptional performance in a compact, low-profile design.

The revolutionary, feature-rich *CaptaVision+* software provides real-time image stitching, real-time depth-of-field fusion, report generation & export, plus more!



SONY Professional CMOS Sensor



The MPX-6C uses a Sony Starvis[®] 6MP 1/1.8" CMOS sensor—IMX178, with 2.4 x 2.4µm pixels. With a captured image resolution reaching 3072x2048 pixels, the MPX-6C resolves fine details from low to high magnifications.

Advanced Rolling Shutter Technology

The rolling shutter of the MPX-6C provides very high resolution, excellent light sensitivity in a color camera, and high speed acquisition and read out ideally suited for microscopy imaging especially in brightfield and stereo applications.

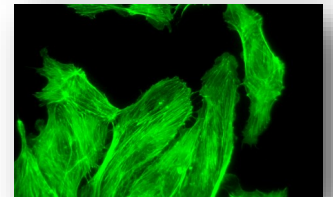
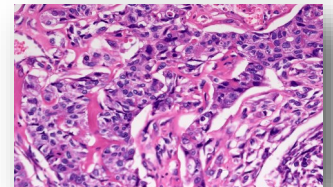


USB 3.0 High-Speed Transmission

USB 3.0 super-speed transmission interface is simple, convenient and ensures a stable high-data transmission rate allowing fast-focusing at high resolution. Imaging can be performed at a rate of 40fps at 6MP!

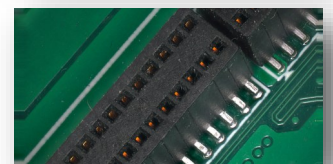
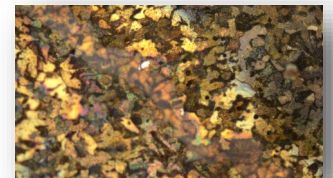
Excellent Color Reproduction

The MPX-6C's core ISP color-interpolation algorithm effectively simulates the human eye's sensitivity to color. The colors in the image are true to the color seen in the eyepiece, whether it is a biological brightfield, stereo or fluorescence image.



Feature-Rich *CaptaVision+* Imaging Software

The innovative interface and workflow-based design redefines the image acquisition → editing → measurement → report output workflow process saving operating time and improving productivity.



- 6MP CMOS Camera
- Ultra-high speed Image Transfer
- USB 3.0 Connectivity
(USB 2.0 Compatible)
- CaptaVision+ Imaging Software



CAMERA & SOFTWARE SPECIFICATIONS

Model	AU-6C-CMOS
Sensor / Model	CMOS • Sony IMX178LQJ-C
Sensor Size	1/1.8"; 0.65x C-mount (recommended)
Image Transmission	High-speed
Pixel Size	2.4µm x 2.4µm
Resolution	3072 (H) X 2048 (V)
Frame Rate	40FPS (3072 X 2048)
Shutter Mode	Rolling
Exposure Time	0.13ms—15s
Automatic Settings	Exposure, Color Scale, White Balance
Manual Settings	Exposure, Gain, Noise Reduction, Gamma, Flat Field Correction
Color Temperature	2000-15000K
ADC Depth	12Bit
Operating Temperature & Humidity	0-60°C
Camera Size & Weight	68x68x46mm / 330g
Data Interface	USB 3.0, compatible with USB 2.0

CaptaVision+ Imaging Software for PC and Mac OS

Advanced Camera Controls: live/still image measurement and annotation; flat field correction; extended depth of focus (focus stacking); image stitching; fluorescence image settings; fluorescence multi-color channel merge; HDR (High Dynamic Range) function

Image Types: JPEG, PNG, TIFF and DICOM (DICOM not available for Mac)

CaptaVision+ is compatible with Excelis HD cameras purchased after January 2019 (Serial numbers starting with "19" — i.e., SN 19XXXXX)

PC Imaging Software

(See additional features at right)

System Software Compatibility

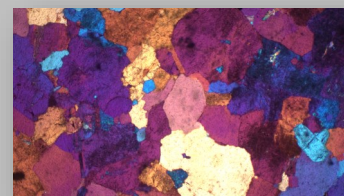
Windows XP, Vista, 7, 8, and 10 (32 or 64 bit); Mac OSX 10.4 and higher

System Requirements: Intel processor (Core 2 Duo or higher); 2GB memory or more; USB 2.0 Hi-Speed port

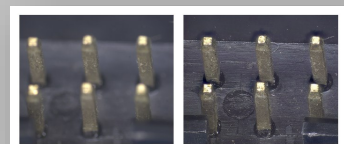
CaptaVision+ Features

- Intelligent 12-bit ISP color reproduction
- Real-time depth-of-field fusion
- Real-time image stitching
- Real-time fluorescence image synthesis and editing
- HDR image synthesis
- Micro-imaging-based intelligent automatic exposure
- Intelligent flatfield correction based on dynamic calculation
- Smart measurement workflow
- Implements multiple iterations of workflow execution
- Supports single shot, delayed camera
- Automatic video and delay video generation
- Output format selection
- User parameter group save and load
- Dynamic / static measurement
- Layered measurement
- Customize measuring gauges, layers, precision, image naming, style, save location
- Data export as TXT or Excel
- Drawing tools: points, lines, rectangles, polygons, circles, arcs & angles
- Report generation and printing

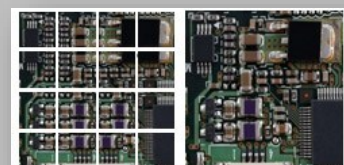
ISO
9001 • 14001



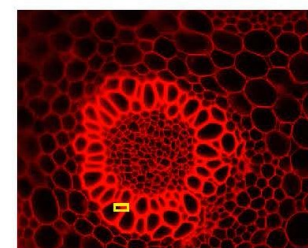
Outstanding color reproduction



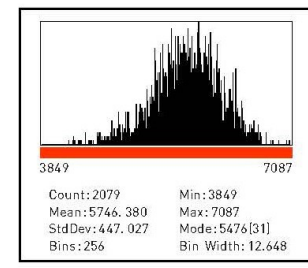
Real-time depth-of-field fusion



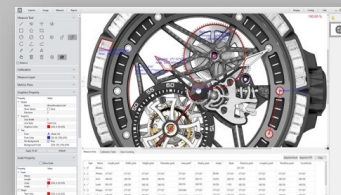
Real-time stitching can generate mosaic images while moving the stage



300x240 pixels, RGB:281K



Advanced noise reduction for fluorescence imaging



Innovative interface streamlines the image acquisition / editing / measurement & report output workflow process

Design, features and specifications are subject to change without notice.