

DATASHEET

OVOPACK 2x6 r-PET

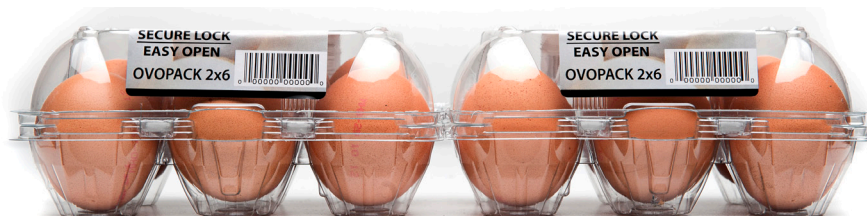


SIDE VIEW



FRONT VIEW

295 mm



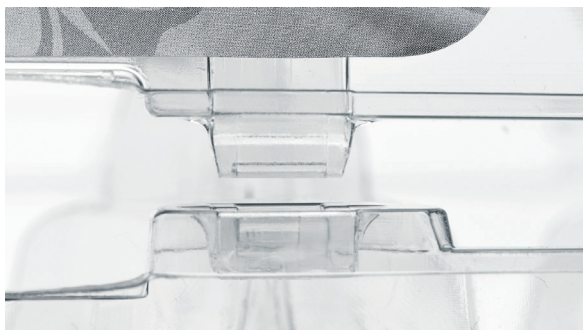
70 mm

TOP VIEW



105 mm

SNAPLOCK EASY OPEN



DATASHEET

OVOPACK 2x6 r-PET



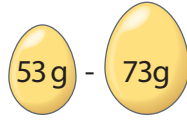
UNITS: 2

EGGS/UNIT: 6

MATERIAL: r-pet

PROCESSING: vacuum formed

CALIBER:



certified according to BRC/loP Global Standard-Packaging

BOX DIMENSIONS

796 x 446 x 303 mm (L x W x H)

Net Weight (kg) 12,42

Bag Weight (kg) 0,70

Gross Weight (kg) 13,12

Volume Bag (m³) 0,108



LAYER STRUCTURE

3 Boxes/Layer



TRUCK LOADING

Pieces/Box 360

Pieces/Pallet 8.640

Pallets/Truck 30

Pieces/Truck 259.200



CONTAINER LOADING

20" 245 Boxes

40" HC 600 Boxes



MACHINE SETUP

MOBA

L	G	J	I1	I2	jaw
15	23	5	10	40	898

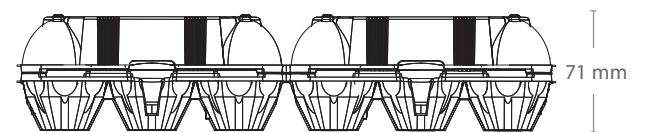
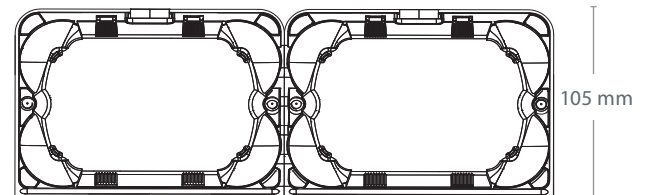
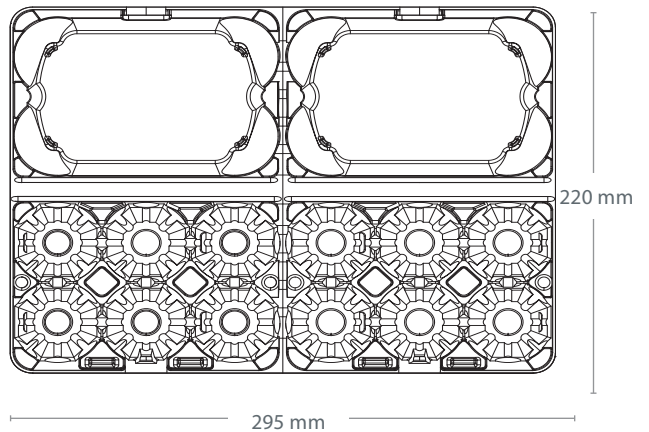
Remarks: WITH ARBOR

STAALKAT

Code OWN 43

Remarks

PACK DIMENSIONS



DECORATION

Label

Direct Print



STORAGE

Palette Dimensions 1345 x 800 x 2554

max. 1 year

NO pallet on top of the other

max. +40°C
min. +10°C

Do NOT expose to sunlight

OVOTHERM International Handels GmbH

Ricoweg 28, 2351 Wiener Neudorf, Austria / Europe

phone +43 2236 61928 0, fax +43 2236 62741

email office@ovotherm.com, email sales@ovotherm.com

