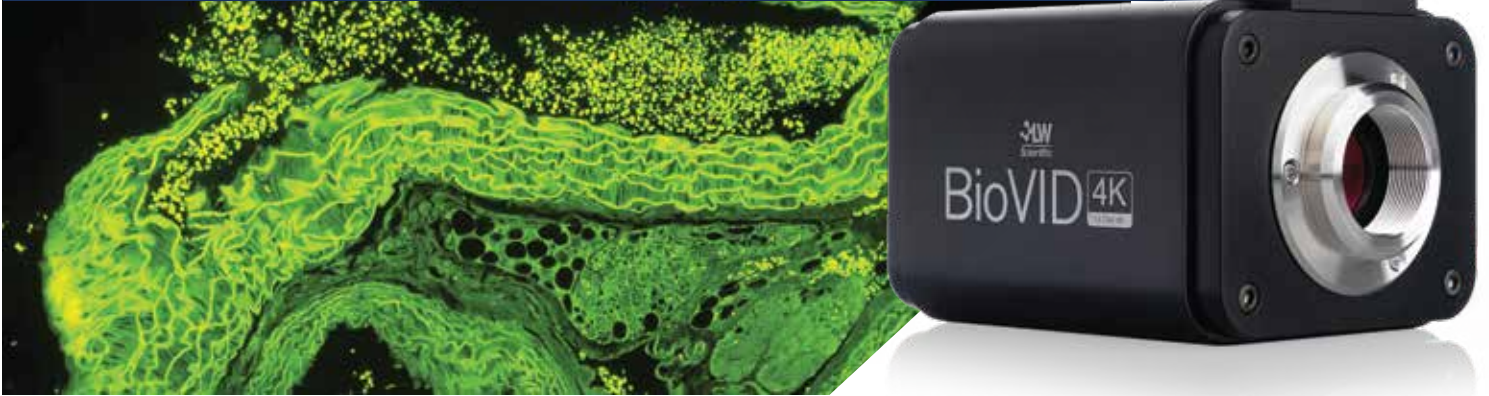


# BioVID 4K

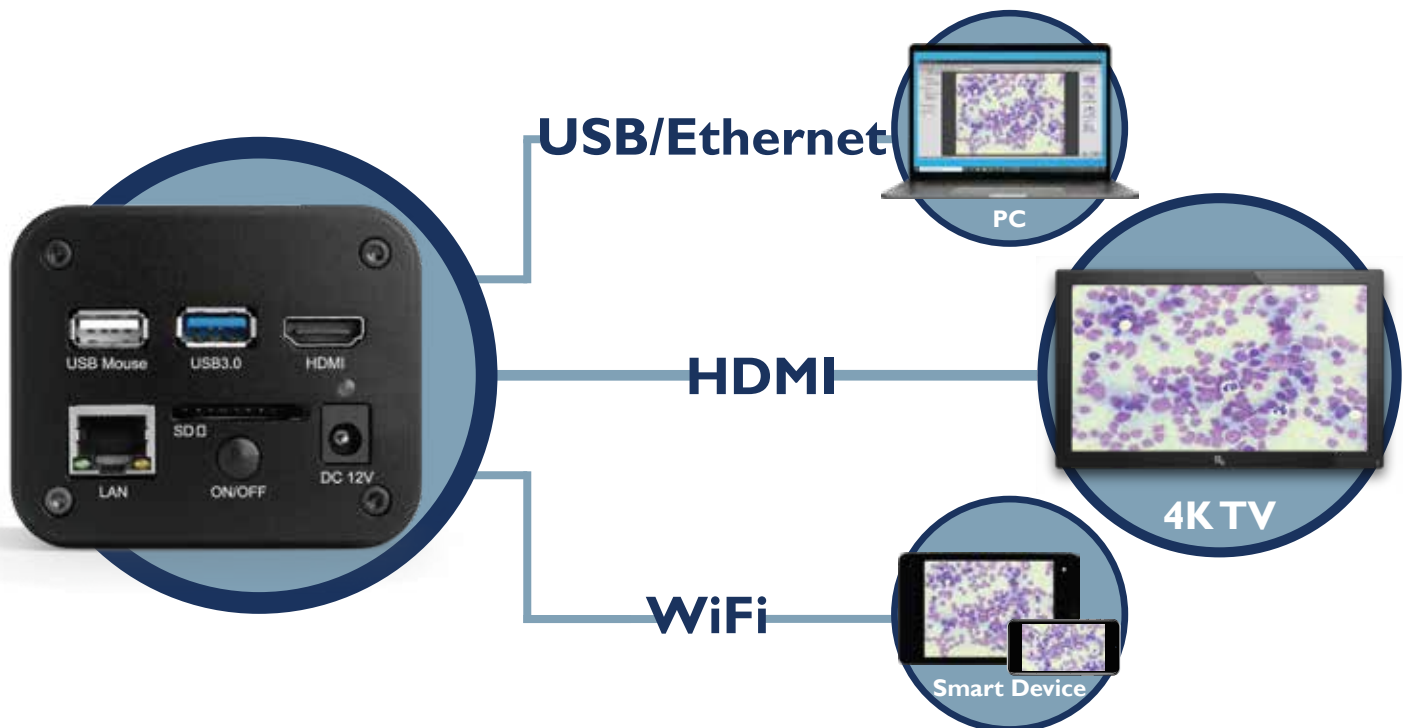
16MP Ultra HD Microscope Camera



The BioVID 4K Ultra HD camera from LW Scientific provides stunning resolution and color for client education and live presentations. Mount the camera to any trinocular C-mount, and you will have access to high-quality, 16 megapixel imaging and 4K video on your monitor or television screen. Save images and videos to the camera's SD card, or connect the camera to your computer via USB 3.0, Gigabit Ethernet, or even Wi-Fi with the help of a 5G WLAN adaptor. The BioVID 4K also has an HDMI port for connection to any large HDTV or projector. With a resolution of 5440 x 3060, the BioVID 4K camera will display 4K quality onto any 4K compatible screen. This camera comes equipped with an extremely sensitive Sony IMX183(C) sensor chip to help it maintain 4K resolution and a fast frame rate in low-light and high magnification settings. No matter where you are, the BioVID 4K will ensure a crisp, clear image from the lecture hall to the laboratory.

## Features

- 4K video resolution across all compatible display platforms
- 16 megapixel imaging
- Multiple connection options via USB 3.0, Gigabit Ethernet, HDMI, and Wi-Fi
- Includes HDMI cable, USB 3.0 cable, Gigabit Ethernet cable, USB mouse, 5G WLAN adaptor, and an 8GB SD card
- Includes a free app for iPhone and Android devices + software for PC and Mac computers
- Choose from **HDMI** and/or **USB** outputs or save images and videos to the included **SD card**



# BioVID 4K Ultra HD Microscope Camera

**When using HDMI output only,** an ONSCREEN camera control panel and tool bar allow you to access the following features with a few clicks of the included USB mouse:

- Color adjustment, exposure, white balance
- Zoom and freeze, mirror and comparison
- “Side-by-Side” viewing

**For USB output,** advanced image software allows these features:

- 2D measurement
- HDR (High Dynamic Range) for more accurate representations of color and light
- Image segmentation and count, image stacking

## Camera Specifications

<b>Resolution:</b>	4K - 16 MegaPixels (5440 × 3060)
<b>Image Sensor:</b>	Sony IMX183 (20MP 5472 × 3648) CMOS color 1/1.06”(13.06x7.27mm)
<b>Pixel size:</b>	2.4um × 2.4um
<b>Auto-Exposure:</b>	0.1ms-2000ms
<b>Power:</b>	cUL / CE approved power adapter AC Input: 100-240Vac 50/60Hz, 0.31A (Auto-switching power adapter) DC Output: 12V, 2A Adaptor

### Connections & Controls:

USB 3.0 Port: USB cable or 5G WLAN WiFi adaptor to computer  
USB Mouse Port  
HDMI Port: HDMI cable to TV  
Gigabit Ethernet Port: Ethernet cable to computer  
DC 12v Jack: 12v DC power in  
SD Slot: For included SD card  
ON/OFF: Power button  
LED Light: Red=off, Blue=on

### Requirements:

Operating System: Microsoft Windows XP, Vista, 7, 8, 10 (32 & 64 bit), Mac OSX, Linux  
CPU: Intel Core2 2.8GHz or higher  
Memory: > 4GB  
USB 2.0 High-speed port

### Weight and Dimensions:

Height: 3.9” (98.3mm)  
Length: 2.6” (65mm)  
Width: 3.1” (78mm)  
Weight: 1.03lbs. (0.47kg)



### Video Output:

**HDMI:** User interface: USB mouse (included)  
Image/Video Capture: SD card  
Video: 30 frames per second  
@ 3840x2160 (HDMI)  
On screen-camera control panel and tool bar

**USB:** Includes software for capturing, rotating, measuring, etc.  
Image/video capture into PC  
Image capture into Mac  
Video: 30 frames per second  
@ 3840x2160 (USB)  
White balance and standard color controls

### Included Accessories:

HDMI cable  
8G SD card  
Power adapter  
USB mouse with 1.3m cable  
USB220-ATA | USB2.0 A cable - 2 meter  
USB 5G WLAN WiFi adaptor  
CD with camera driver and software

### Optional Accessory:

Eyeteube adapter (MVP-ADAO-ETMC)  
(For use with trinocular microscopes without a c-mount)  
1080p Monitor (BVP-SCRN-I163)  
(This monitor will not display the full 4K resolution from the camera)

Model #	Description
BVC-4K16-CMT3	4K / 16 megapixel ultra HD microscope camera



GrayMed  
PH: 61 3 86091732  
Email: sales@graymed.com.au  
Web: www.graymed.com.au



www.LWScientific.com

SLS-7.5.3-L-128 | Rev 0