



HOSHIZAKI

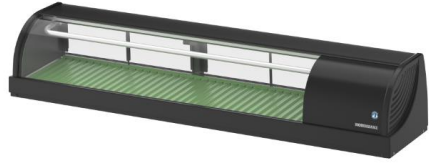
HNC-150BE-R-BLH

Model Number
97000373

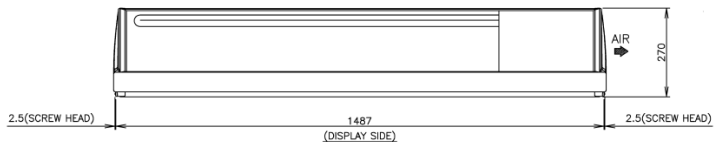
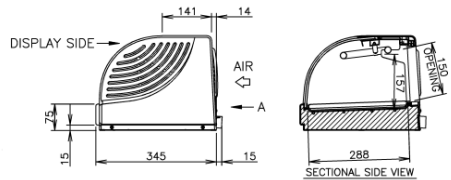
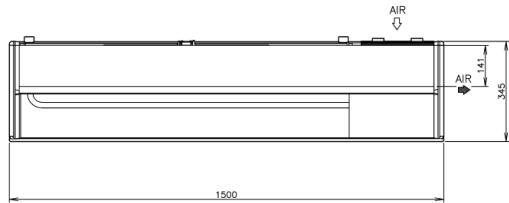
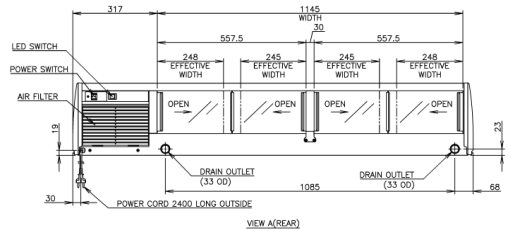
57L Sushi Display Case With Led Lighting – Right Sided

PRODUCT FEATURES

- **Airflow:** The airflow created by the refrigeration effect of the evaporator is smooth and diffused, without forced air-circulation, which would cause dehydration and weight loss, resulting in swift deterioration of the fish or other perishable displayed food.
- **Temperature Control:** One of the strikingly simple solutions for easy and fast temperature control: The inside wave shaped ABS trays can be flipped face up or down to allow more or less contact of the food with the cold trays. This way the cooling impact is reduced. A thermometer inside the cabinet helps you to monitor the inside temperature at all times.
- **Attractive Display:** The tubular-shaped evaporator absorbs the heat continuously. Condensation freezes on its external surface, maintaining an attractive frost layer with no dripping. This model is equipped with LED lighting that can be turned on and off as needed.
- **Convenience:** The practical anti-slip top is ideal to place serving dishes. The condensing unit of all our models sits on the right-hand side, with the outflow of air positioned on the sides away from the operator.
- **Easy Cleaning:** The sliding door with 150 mm height and the lightweight ABS trays with a wave-shaped profile are easily disassembled and removed for daily cleaning.



TECHNICAL DRAWING



PRODUCT SPECIFICATION

Exterior	Clear Glass, ABS Plastic, PVC Plastic
Interior	Clear Glass, ABS Plastic, Stainless Steel
Effective Capacity	57L
Saturation Temperature	Approx 5 °C (Ambient temp 30°C, no load)
Power Cord	2.4m
Dimensions: Interior	1145mm(W) x 288mm(D) x 157mm(H)
Dimensions: Exterior	1500mm(W) x 345mm(D) x 270mm(H)
Cooling	Air
Weight Net/Gross (kg)	37/52
AC Supply Voltage	1 PHASE 220-240V 50Hz / 10Amp Plug
Amperage	Rated: 1.0A Starting: 6A
Refrigerant Charge	R600a / 35g
Operating Conditions	Ambient Temp.: 10 - 30°C Voltage Range: Rated Voltage ±6%



*Warranty excludes Glass Door

Descriptions and specifications are subject to change at any time, without notice. Illustrations for demonstration purposes. Copyright © 2023 Hoshizaki Lancer Pty Ltd. All right reserved.

*Refer to manual for full installation & maintenance requirements.