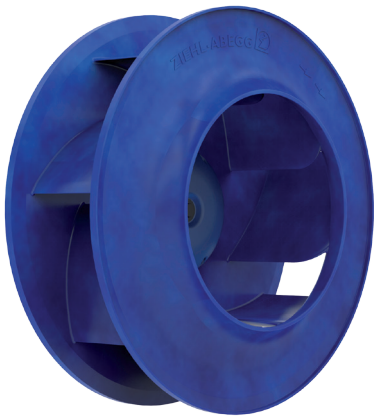


# Cpro-ECblue

for three phase alternating current, 200-240 V

RH31C-ZID



## Description

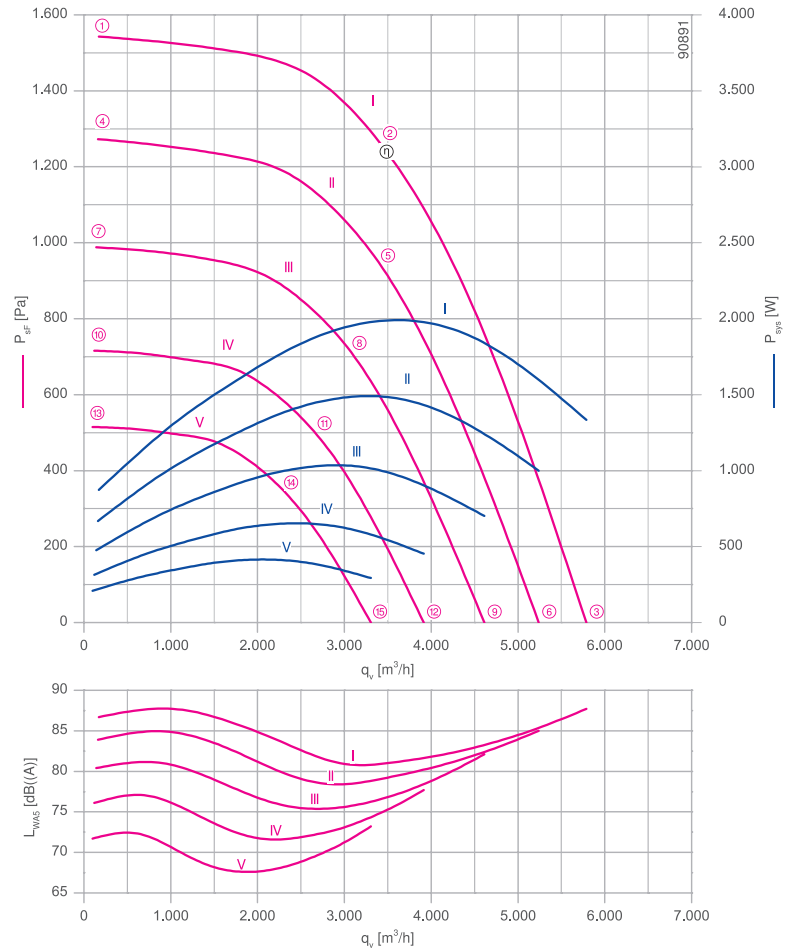
Motor technology: EC  
 Rated voltage U: **3-200-240 V\***  
 Rated frequency f: **50/60 Hz\***  
 Motor input power P: **2.00 kW\***  
 Rated current I: **6.00-5.00 A\***  
 Rated speed n: **3370 min<sup>-1</sup>\***  
 Thermal class: **THCL155\***  
 Min. permitted ambient temperature  $t_{r1}$ : -20 °C  
 Max. permitted ambient temperature  $t_{r2}$  at  $n_{max}$ : 55 °C  
 Electrical connection: integrated Controller  
 Number of blades : 7  
 Balancing quality: G 6.3  
 Protection class: IP54  
 Motor protection: Integrated active temperature management  
 Impeller : ZAmid, uncoated, Ultramarine blue  
 Conformity: ErP 2015, CE

### ErP-data

Efficiency  $\eta_{statA}$ : 66.1 %  
 Efficiency:  $N_{actual} = 73.5 / N_{target} = 62^{**}$   
 EC controller integrated

\*Rated data  
 \*\*ErP 2015

## Characteristic curve

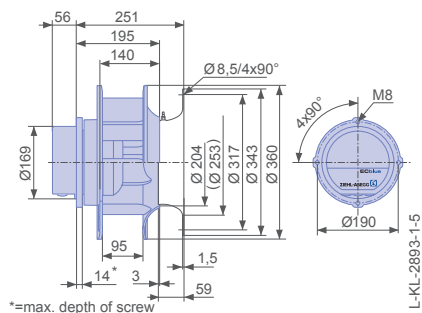


measured with inlet ring, without guard grille according to ISO 5801

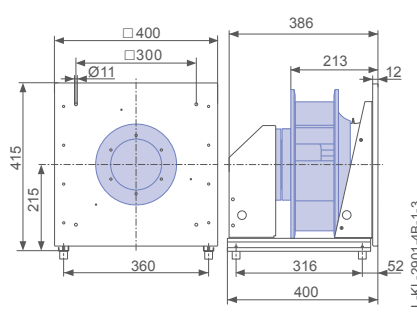
➤ Inlet ring	00401506	Page 450
➤ Connection diagram	1360-401	Page 548
➤ Rubber dampers	30x30 / 40	Page 454
➤ Spring vibration dampers	MSN 4	Page 454
➤ System components		Page 448

## Dimensions [mm]

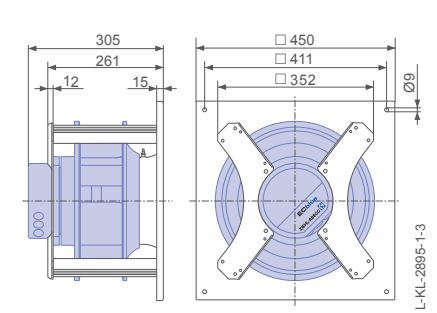
Free-running motor impeller RH in installation position H/V/u/Vo



Plug fan ER in installation position H



Ventilation unit GR in installation position H

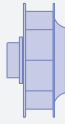
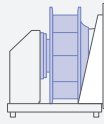
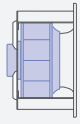
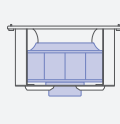
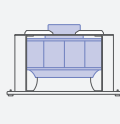


Performance data

Type	Characteristic curve	Speed	Operating point	Current	Motor input power	Suction side sound power level	Maximum ambient temperature
		n [min <sup>-1</sup> ]		I [A]	P <sub>sys</sub> [W]	L <sub>WAS</sub> [dB]	
_31C-ZID.DC.CR	I	3370	①	2.30	880	87	55
		3370	②	5.20	2000	81	
		3370	③	3.50	1350	88	
	II	3060	④	1.80	660	84	60
		3060	⑤	3.90	1500	79	
		3060	⑥	2.60	1000	85	
	III	2700	⑦	1.30	480	80	
		2700	⑧	2.70	1050	76	
		2700	⑨	1.90	700	82	
	IV	2300	⑩	0.90	310	76	
		2300	⑪	1.75	660	72	
		2300	⑫	1.25	460	78	
	V	1950	⑬	0.64	210	72	
		1950	⑭	1.15	420	68	
		1950	⑮	0.84	290	73	

Current values determined at 230V

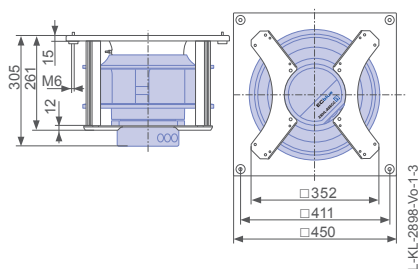
Fan ordering information

Design	RH*	ER**	GR**	GR**	GR**
Installation position	H/Vu/Vo	H	H	Vo	Vu
					
<b>Type</b>	<b>RH31C-ZID.DC.CR</b>	<b>ER31C-ZID.DC.CR</b>	<b>GR31C-ZID.DC.CR</b>	<b>GR31C-ZID.DC.CR</b>	<b>GR31C-ZID.DC.CR</b>
Basic electronics					
<b>Article no.</b>	<b>114486</b>	<b>114582/A01</b>	<b>114534/H01</b>	<b>114534/O01</b>	<b>114534/U01</b>
Premium electronics					
<b>Article no.</b>	<b>114487</b>				
Weight [kg]	10.00	17.00	16.00	16.00	16.00
* Inlet ring not included					
** Inlet ring integrated					

Control technology

Control module	Operating terminal	Expansion module
		
➤ Page 464	➤ Page 476	➤ Page 473

Ventilation unit GR in installation position Vo



Ventilation unit GR in installation position Vu

