



METASMESTA

Creative Technology  
Company

2  
0  
2  
3

# METASMESTA

EXPANDING THE UNIVERSE

We are dedicated to helping businesses and organizations leverage the power of the metaverse to revolutionize the way they operate and interact with their customers, employees, and partners.

## PT. METASMESTA GLOBAL INTERNASIONAL

Amirage International BV  
Hermesweg 10.A  
7202BR.ZUTPHEN  
Netherlands

Menara Era , Lantai 6  
Jl. Senen Raya No.135  
Jakarta 10410  
Indonesia

[www.metasmesta.com](http://www.metasmesta.com)

[info@metasmesta.com](mailto:info@metasmesta.com)

+6281181190444



# HI THERE!

PT METASMESTA GLOBAL INTERNASIONAL is a leading provider of innovative metaverse solutions. We are a team of experienced professionals who are passionate about building immersive and interactive virtual worlds that enable users to connect, communicate, and collaborate in new and exciting ways.

Our platform is designed to be scalable, flexible, and user-friendly, and is backed by state-of-the-art technology that enables seamless and immersive experiences. Our target market includes gamers, socialites, educators, and business professionals, and we offer a range of services that cater to these different segments.

At METASMESTA, we believe that the metaverse has the potential to revolutionize the way we connect, communicate, and collaborate, and we are committed to leading the charge in this exciting new frontier. Join us and let's build the metaverse together!"



**PT. METASMESTA GLOBAL INTERNASIONAL**  
**EXPANDING THE UNIVERSE**

[www.metasmesta.com](http://www.metasmesta.com)

# OUR SERVICES

*we are committed to providing a seamless and immersive experience for our users, leveraging the latest technologies and tools to create an engaging and dynamic virtual world. We are dedicated to helping businesses and individuals create and connect within the metaverse, unlocking new opportunities for growth, learning, and socializing in the digital realm.*

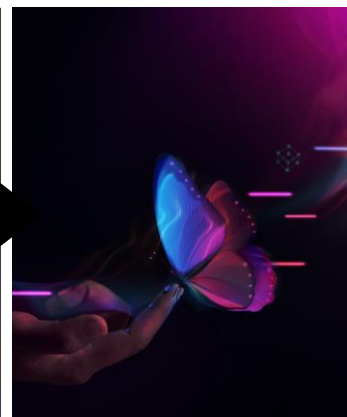


## VIRTUAL ENVIRONMENT

- Virtual Reality Development
- Augmented Reality Development
- Virtual Events and Exhibition hall
- VR Gaming
- Social Hub

## CREATIVE TECHNOLOGY

- Custom software development
- Internet of Things (IoT) consulting
- Artificial Intelligence
- Blockchain Development
- Mobile application



## AVATAR CREATION

- Customization options
- Body shape
- Skin tone
- Animations
- Emotes
- Accessories
- Save and share



## GAMIFICATION SERVICES

- Quests and challenges
- Points, badges, and leaderboards
- Virtual rewards
- Social features
- Feedback and notifications:
- Mini-games and challenges



## NFT CREATIONS

- Creation tools
- Minting
- Smart contract management
- Marketplace integration:
- Wallet integration:
- Analytics and reporting



## PAVILION METAVERSE

- Customizable environments
- Interactive experiences
- Virtual events
- Real-time communication
- Custom development solutions
- Integration with existing platforms

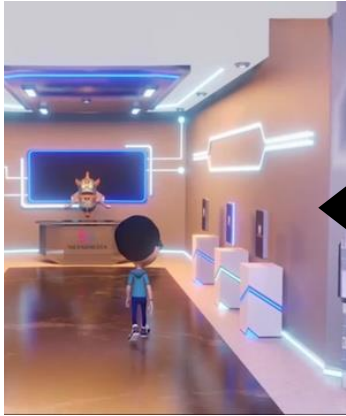


**EXPANDING THE UNIVERSE**

[www.metasmesta.com](http://www.metasmesta.com)

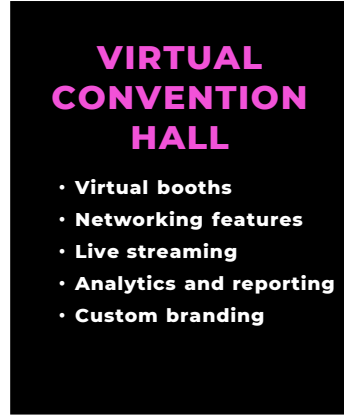


# OUR PRODUCTS



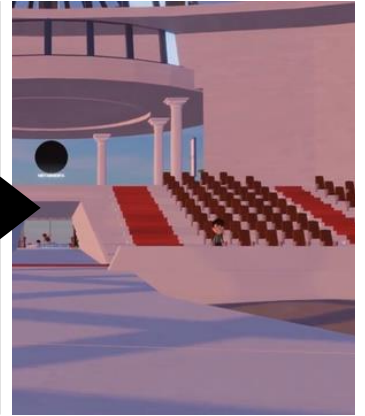
## VIRTUAL STORE

- Virtual storefronts
- Product displays
- Payment processing
- Inventory management
- Analytics and reporting



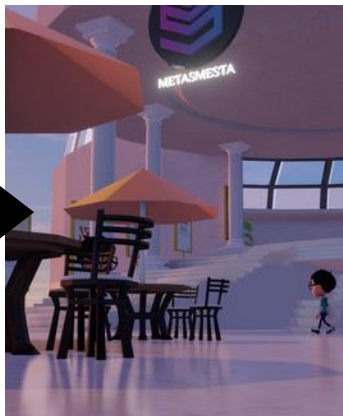
## VIRTUAL CONVENTION HALL

- Virtual booths
- Networking features
- Live streaming
- Analytics and reporting
- Custom branding



## BUSINESS LOUNGE

- Communication tools
- Event hosting
- Resource sharing
- Custom branding
- Analytics and reporting



## INDONESIAN WHOLESALE

- Large inventory
- Competitive pricing
- Delivery and shipping services
- Customized orders
- Customer service
- Fulfillment centers in the Netherlands, Canada, Australia, and Indonesia



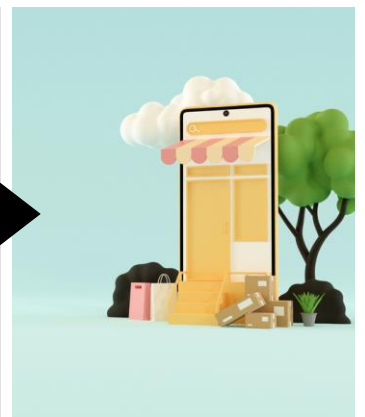
## NFT GALLERY

- Artist marketplace
- Customizable galleries
- Auctions and sales
- Social features
- Secure transactions
- Analytics and reporting



## SALES OF SME PRODUCT

through international marketplaces such as amazon, Kaufland, bol, homedeco, etc.



EXPANDING THE UNIVERSE

[www.metasmesta.com](http://www.metasmesta.com)





# OUR TECHNOLOGY

## Virtual reality (VR) and augmented reality (AR)



AR and AR technologies are used to create immersive and interactive environments within the metaverse. These technologies allow users to experience virtual worlds in a more realistic and engaging way, by providing sensory inputs that mimic real-life experiences.

## 3D modeling and animation



3D modeling and animation software is used to create the virtual objects and environments within the metaverse. This software allows developers to create realistic and detailed 3D models of objects and environments, which can be used to populate virtual worlds.

## Blockchain technology



Blockchain technology is used in some metaverse platforms to create secure and decentralized virtual economies and currencies. This technology enables users to buy, sell, and trade virtual goods and services within the metaverse, using cryptocurrencies and other digital assets.



EXPANDING THE UNIVERSE

[www.metasmesta.com](http://www.metasmesta.com)





# OUR TECHNOLOGY

## Cloud computing

Cloud computing technology is used to host and operate metaverse platforms, providing scalable and reliable infrastructure for virtual worlds.

## Artificial intelligence (AI) and machine learning (ML)

AI and ML technologies are used to create more dynamic and intelligent virtual environments within the metaverse. These technologies can be used to create responsive and adaptive virtual characters and objects, and to enable natural language processing and other forms of human-like interaction.

## Internet of Things (IoT)

IoT technologies are used to connect physical devices to virtual worlds within the metaverse. This can include sensors, cameras, and other devices that can be used to monitor and control the virtual environment.



EXPANDING THE UNIVERSE

[www.metasmesta.com](http://www.metasmesta.com)





# OUR COMPETITIVE ADVANTAGES

## GROUP SYNERGY

Metasmesta is owned by Avigra & IIH Group which was established in late 1990s and has been operating several companies engaging in:

- Export/import trading (Indonesia in Your Hands)
- Animation & VFX production (Castle Production)
- Multimedia education (CMC Foundation)
- AR/VR production (Cebirra)
- Multimedia & IT Certification (LSP SDMTIK)
- Live Production & Live Streaming (Semut Sahaja)
- Property & FB Management (Nest Residence & Nolta FB)



## SOLID TRACK RECORD & CLIENT BASE

During the past 20 years, we have been serving Clients, from Hollywood to Seoul to Taiwan to EU and The Nordic and ASEAN countries. From Ministry of Education, Manpower, Industry, Infocom to Provincial Governments and State Owned Companies

## LARGE TALENT POOL

Our Vocational school ensures a continuous supply of talented creative manpower and cost advantages

## HI TECH, HI TOUCH

We offer not only hi-tech products, but also added value services such as : 24 hour customer service, metaverse platform, and one-on-one business consultation.



**EXPANDING THE UNIVERSE**

[www.metasmesta.com](http://www.metasmesta.com)





**METASMESTA**

**EXPANDING THE UNIVERSE**

**PT. METASMESTA GLOBAL INTERNASIONAL**

[www.metasmesta.com](http://www.metasmesta.com)

[info@metasmesta.com](mailto:info@metasmesta.com)

**+6281181190444**

**Menara Era , Lantai 6  
Jl. Senen Raya No.135  
Jakarta 10410  
Indonesia**

**Amirage International BV  
Hermesweg 10.A  
7202BR.ZUTPHEN  
Netherlands**