

Technical data sheet for

## E28M4 DOUBLE STACKED

Full Size Manual / Electric Convection Ovens

Double Stacked on a Stainless Steel Base Stand



Model E28M4/2C shown



### E28M4/2 E28M4/2C

E28M4 ovens shall be Blue Seal electrically heated Turbofan convection ovens E.T.L. listed and NSF-4 listed. The ovens shall have a one piece porcelain enameled oven chamber, stainless top and sides and safe touch vented easy clean drop down door. Ovens shall have capacity for four full size sheet pans. The ovens shall have 5.6kW heating elements for 220-240V models or 5.0kW heating elements for 208V models. The ovens shall have twin bi-directional reversing fans. The oven shall be controlled by a mechanical thermostat with a range of 150-500°F / 50-260°C, a 60 minute bake timer, and feature dual halogen oven lamps. Ovens shall be double stacked using Double Stacking Kits DSK272831 (adjustable feet option) or DSK272831C (castor option). Units shall be supplied in 100% recyclable shipping packaging.

Double stack models are supplied as two individual ovens and a double stacking kit for field assembly.

E28M4/2 - Double stack with adjustable feet base stand

E28M4/2C - Double stack with castor base stand

#### DOUBLE STACK FEATURES

- Two 4 full size ovens
- Compact 31 $\frac{7}{8}$ " / 810mm width
- Full stainless steel base stand
- Full stainless steel oven spacer frame
- Adjustable feet or castor models
- Guard rail for bottom oven

#### OVEN FEATURES (each)

- 4 full size sheet pan capacity
- 3 $\frac{1}{8}$ " / 80mm tray spacing
- Twin bi-directional reversing fans
- 5.6kW heating (220-240V) / 5.0kW heating (208V)
- Porcelain enameled oven chamber
- Plug-in continuous oven door seal
- Safe-Touch vented drop down door
- Stay-Cool door handle
- Heavy-duty door hinges
- Easy clean door glass system
- Mechanical thermostat 150-500°F / 50-260°C
- 60 minute timer with time up alarm
- Dual halogen oven lamps
- Twin dia. 7" / 180mm full stainless steel oven fans
- 4 oven wire racks supplied

#### E28M4/2 E28M4/2C Full Size Manual / Electric Convection Ovens Double Stacked on a Stainless Steel Base Stand

##### CONSTRUCTION - OVENS

Porcelain enameled fully welded oven chamber  
Stainless steel front, sides and top exterior  
Stainless steel oven fan baffle and oven vent  
Removable 4 position chrome plated wire side racks  
Oven racks chrome plated wire (4 supplied)  
Stainless steel frame drop down hinged door  
0.2" / 5mm thick door outer glass  
0.2" / 5mm thick low energy loss door inner glass  
Heavy-duty counterbalanced door hinges  
Wear resistant powder coated welded door handle  
Stainless steel control panel  
Aluminized coated steel base and rear panels

##### CONSTRUCTION - DOUBLE STACKING KIT

All stainless steel construction  
Welded 1½" and 1¼" square tube front and rear frame  
base stand  
4 adjustable feet on E28M4/2  
4 dia. 3" / 76mm swivel castors with 2 front castors dual  
wheel and swivel lock on E28M4/2C  
Stainless steel oven spacer frame  
Stainless steel bottom oven vent extension

##### CONTROLS (each oven)

Power ON control panel indicator  
Mechanical thermostat 150-500°F / 50-260°C  
Heating ON control panel indicator  
Manual 60 minute timer  
Time-Up control panel indicator and buzzer  
Over-temperature safety cut-out

##### CLEANING

Stainless steel top and sides continuous exterior panel  
Porcelain enameled oven chamber  
Fully removable chrome plated oven side racks  
Removable stainless steel oven fan baffle  
Full stainless steel oven fans  
Easy clean door system with hinge out door inner glass (no  
tools required)  
Removable plug-in oven door seal (no tools required)

##### SPECIFICATIONS

###### Electrical Requirements

208V, 50/60Hz, 1-phase, 5.4kW, 25.8A  
220-240V, 50/60Hz, 1-phase, 6.0kW, 25A  
No cordset supplied

##### External Dimensions

Width 31⅞" / 810mm  
Height 66⅞" / 1681mm (E28M4/2)  
69¾" / 1763mm (E28M4/2C)  
Depth 30" / 762mm

##### Oven Internal Dimensions (each oven)

Width 27⅞" / 695mm  
Height 14" / 355mm  
Depth 18½" / 470mm  
Volume 4.1ft³ / 0.116m³

##### Oven Rack Dimensions

Width 26" / 660mm  
Depth 18" / 460mm

##### Nett Weight (double stack complete)

350lbs / 159kg

##### Packing Data (E28M4 ovens each)

191lbs / 86.5kg  
19.4 ft³ / 0.55m³

Width 34¼" / 870mm  
Height 29¾" / 755mm  
Depth 32⅞" / 835mm

##### Packing Data (Stacking Kit)

42lbs / 19kg (DSK272831 - adjustable feet)  
48lbs / 22kg (DSK272831C - castor)  
2.8ft³ / 0.08m³  
Width 23¼" / 590mm  
Height 33⅞" / 840mm  
Depth 6¼" / 160mm

Supplied CKD for assembly on site

##### INSTALLATION CLEARANCES

Rear 1" / 25mm  
LH Side 1" / 25mm  
RH Side 1" / 25mm

##### CLEARANCE FROM SOURCES OF HEAT

A minimum distance of 12" / 300mm from the appliance  
sides is required

##### Double Stacking Kits

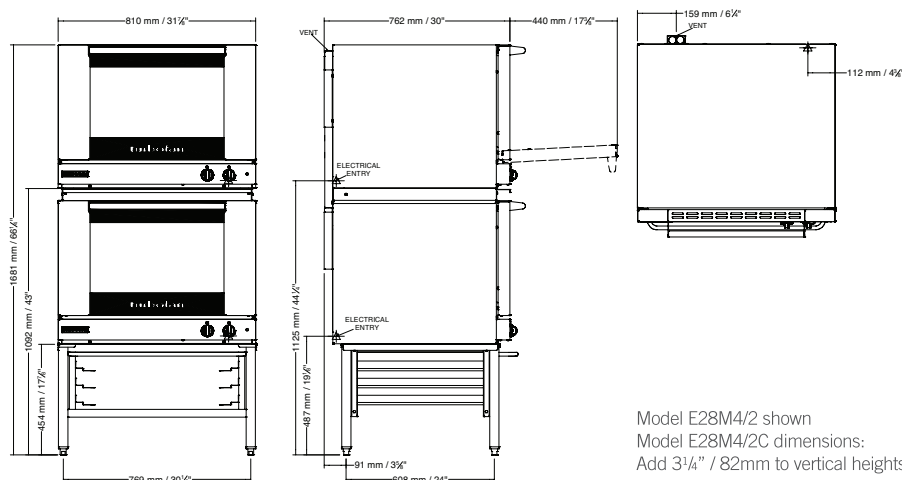
For after market double stacking two E28M4 convection ovens  
DSK272831 - Double stacking kit - adjustable feet  
DSK272831C - Double stacking kit - castor



www.blue-seal.ca  
www.turbofanoven.com  
www.servecanada.com

##### CANADA

Serve Canada  
40 East Pearce Street  
Richmond Hill ON  
L4B 1B7  
Ph Toll Free 800-263-1455  
Fax 905-731-7687  
Email info@servecanada.com



Model E28M4/2 shown  
Model E28M4/2C dimensions:  
Add 3¼" / 82mm to vertical heights

Manufactured by:  
Moffat Limited  
45 Illinois Drive, Izone Business Hub  
Rolleston 7675, New Zealand



Designed and manufactured by



##### ISO9001

All Turbofan products are designed and  
manufactured by Moffat using the  
internationally recognised ISO9001  
quality management system, covering  
design, manufacture and final inspection,  
ensuring consistent high quality at all times.

In line with policy to continually develop  
and improve its products, Moffat Limited  
reserves the right to change specifications  
and design without notice.