

## FEATURES

- High quality stainless steel body & interior, aluminum back
- 3 stainless steel insulated doors
- Side mounted compressor & condensing unit
- Fan forced cooling system
- Self-evaporation water tray
- 3 heavy duty epoxy coated shelves (1 per door)
- Includes 19.5" deep sanitary cutting board
- Includes 4" heavy duty locking casters
- Self-closing swing doors with 90 degree stay open feature
- Space for 12 PCs of 1/3 size pan inserts (poly carbonate pans included)
- Digital temperature controller & defrost timer
- Heavy duty 1/4+ HP Embraco compressor



## TEMPERATURE

- Interior temperature range: 0°C to 8°C (32°F to 46°F)

## WARRANTY

- 2 years parts and labour  
7 years compressor warranty
- Extended warranty options available

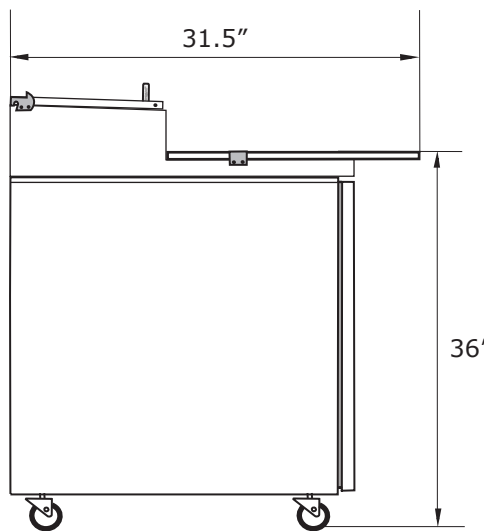
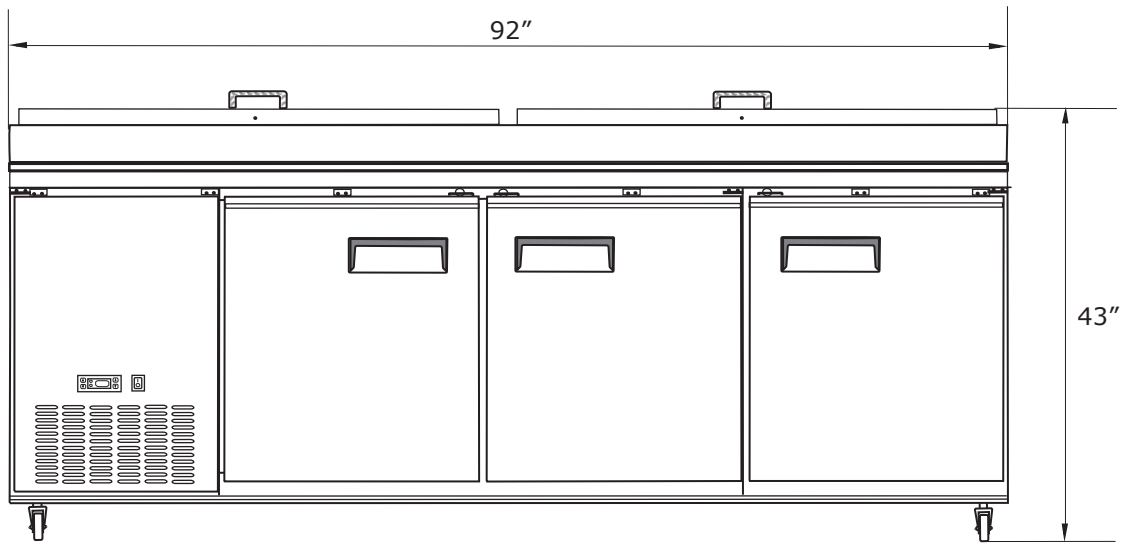
Project: \_\_\_\_\_

Date: \_\_\_\_\_

Price: \_\_\_\_\_

## SPECIFICATIONS

Volts (V)	Watts (W)	Amps (A)	Volume (cu./ft)	Refrigerant	Overall Dimensions			Interior Dimensions			Weight	
					Width	Depth	Height	Width	Depth	Height	Net	Gross
115V	609W	5.3A	24.2	R290	92	31.5	43	N/A	N/A	N/A	565 LBS	N/A



Refrigerated Pizza Prep Table

Model PPT-92-12

CERTIFICATIONS:



NEMA 5-15P