

KOOL-IT

Signature

LX-46RS

DOUBLE GLASS DOOR MERCHANDISER REFRIGERATOR

Energy efficient, eco-friendly HC refrigerant with low charge, spark-free components, and the lowest utility costs in its category.



Signature 40/80 Warranty
 40 months parts and labor
 80 months on compressor (part only)

KEY FEATURES



• Eco-Friendly Refrigerant

Environmentally friendly R290 hydrocarbon refrigerant has low Global Warming Potential (GWP). Meets all USA, California & Canada refrigerant & energy standards.



• Intelligent Electronic Control

Patented ETC1H electronic controller assures optimal refrigeration performance through precision temperature control, and intelligent control for defrost cycle, compressor & other component functions.



• High Power Reliable Refrigeration System

Fast pull down, optimal internal air circulation and reliable refrigeration, maintaining cooler temperatures for food preservation.



• Standard LED Lighting System

Ultra bright low energy interior LED illumination system provides optimal merchandise display visibility. Low profile, door mounted, clip-in LED design.



• Newly Designed Condenser

New condenser featuring a joints reduction down to zero increasing long term refrigeration reliability and safeguarding against any system leaks.



• Spark-Free Refrigeration Components

All Reach-In models have spark free refrigeration components for optimal safety, per UL requirements.



3560 NW 56th Street
 Fort Lauderdale, FL, United States 33309
 Telephone: 786.600.4687 / Toll Free: 844.218.8477
 Fax: 786.661.4100

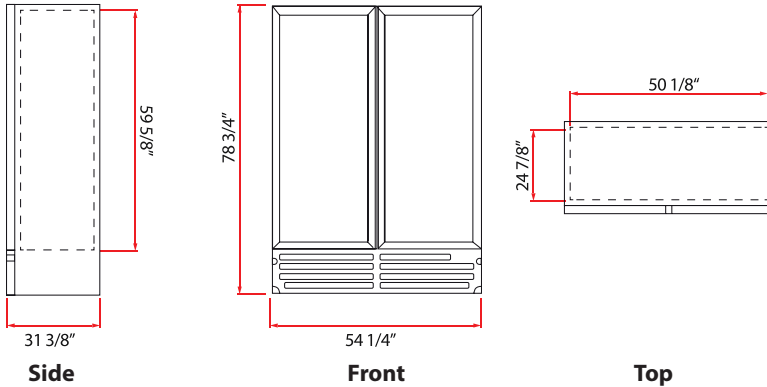
5659 Royalmount Ave.
 Montreal, QC, Canada H4P 2P9
 Telephone: 514.737.9701 / Toll Free: 888.275.4538
 Fax: 514.342.3854 / Toll Free: 877.453.8832
sales@mvpgroupcorp.com / mvpgroupcorp.com



LX-46RS

DOUBLE GLASS DOOR MERCHANDISER REFRIGERATOR

PRODUCT VIEWS



ADDITIONAL FEATURES



Manual Lock - External lock available



Gravity kit - Visi-Slide product display technology



Price Kit - Available for shelf display



Casters or legs are available options



Sliding door model options available

TECHNICAL SPECIFICATIONS

Exterior Dimensions		Interior Dimensions		
W:	54 1/4" (138 cm)	W:	50 1/8" (127 cm)	
D:	31 3/8" (80 cm)	D:	24 7/8" (63 cm)	
H:	78 3/4" (200 cm)	H:	59 5/8" (152 cm)	
Usable Interior Capacity		Usable Volume		
W:	47 3/8" (120 cm)	41.7 Cu Ft 1180 L		
D:	19 1/8" (49 cm)			
H:	52 1/8" (132 cm)			
Doors	Material	Shelves	Shelf Size	
2	Plastic Frame	10	W:	24 1/4" (62 cm)
			D:	19 3/4" (50 cm)
Exterior Material		430 Stainless Steel		
Interior Material		201 Stainless Steel		

REFRIGERATION PERFORMANCE

Refrigerant	Energy Consumption
R290 / 3.4 oz (0.095 kg)	3.290 kWh/24h
Compressor Power	Condenser
1/2+ HP	Finless (low maintenance)
Thermostat default setting	32°F (0°C) to 44.6°F (7°C)

ELECTRICAL

Power Supply	Amps	Lighting
115V/60Hz	8.7A	205.2 Lux Output 18 modules, 8 LED per
Plug Type	Controller	Cord Length
NEMA 5-15P	ETC1H	128" (327cm)

LOGISTICS

Trailer Loads	Unit Weight	Shipping Dimensions	
53': 30	466.2 lb (211.5 kg)	W:	56 1/2" (143 cm)
	Shipping Weight	D:	31 1/2" (80 cm)
	501.7 lb (227.6 kg)	H:	82 1/4" (209 cm)