

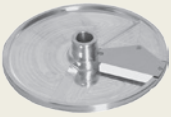
# CUTTING TOOL GUIDE

TOP QUALITY CUTTING TOOLS FOR ANY CUT AND OPTIMAL RESULTS



**SLICER**  
(stainless steel)

- Slices firm and soft products, such as root vegetables, bell pepper, onion, leek, cucumber, tomato, apple, citrus fruit, bananas, mushrooms, etc.
- Shreds lettuce and cabbage.
- Dices in combination with suitable dicing grid.



**SOFT SLICER**

- Slices soft products.
- Dices in combination with a suitable dicing grid.



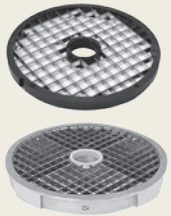
**CRIMPING SLICER**  
(stainless steel)

- For ripple slicing of beet, cucumber, carrots, etc.



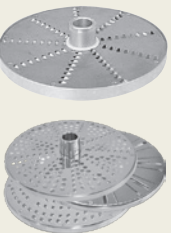
**JULIENNE CUTTER**  
(stainless steel)

- Cuts julienne potatoes, carrots, cucumber, etc.
- Julienne potatoes for French fries.



**DICING GRID**

- Dices root vegetables, fruit, potatoes, cabbage, carrots, cucumbers, apples, tomatoes, onions, etc. in combination with a suitable slicer.



**GRATER/SHREDDER**  
(stainless steel)

- Grates or shreds carrots and cabbage.
- Grates nuts, almonds, dry bread, cheese, etc.
- Shreds cheese or grates hard cheese.

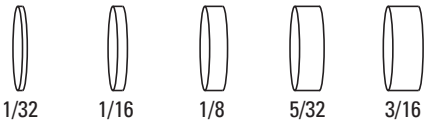
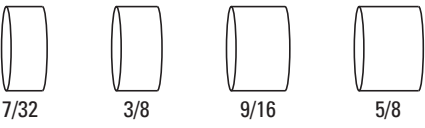
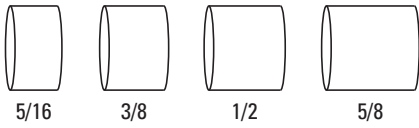
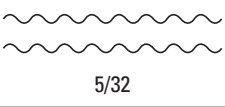
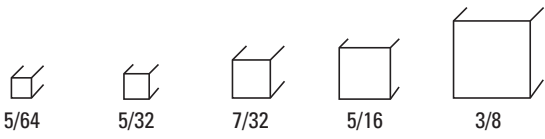
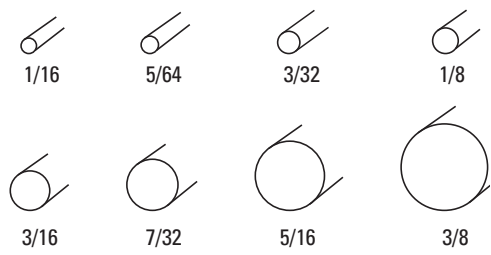
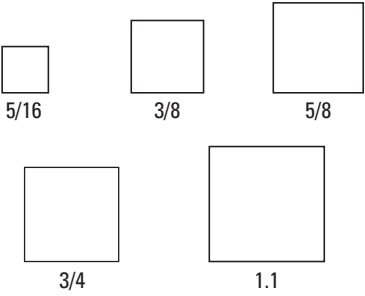


For complete equipment specifications visit our website at [www.hobartcorp.com](http://www.hobartcorp.com)



## CUTTING TOOL GUIDE

Note: The cutting tool design and range varies between different sizes and machine types.  
Diagrams below show estimated sizes.

		FP100	FP150/FP250	FP350/FP400
<b>Slicers</b>		1/16"   1.5MM	1/16"   1.5MM	1/32"   1MM 1/16"   1.5MM
		5/32"   4MM 7/32"   6MM 3/8"   10MM 5/8"   15MM	5/64"   2MM 1/8"   3MM 5/32"   4MM 7/32"   6MM 3/8"   10MM 5/8"   15MM	1/8"   3MM 5/32"   4MM 7/32"   6MM 3/8"   10MM 9/16"   14MM 5/8"   15MM
<b>Soft Slicers</b>		5/16"   8MM 3/8"   10MM 1/2"   12MM 5/8"   15MM	5/16"   8MM 3/8"   10MM 1/2"   12MM 5/8"   15MM	See Pricebook for Soft Dice Sets
	<b>Crimping Slicers</b>		5/32"   4MM	5/32"   4MM
<b>Julienne Cutters</b>		5/64"   2MM 5/32"   4MM 5/16"   8MM	5/64"   2MM 5/32"   4MM 5/16"   8MM	5/64"   2MM 5/32"   4MM 7/32"   6MM 5/16"   8MM 3/8"   10MM
	<b>Shredders</b>		1/16"   1.5MM 5/64"   2MM 1/8"   3MM 3/16"   4.5MM 7/32"   6MM 5/16"   8MM	1/16"   1.5MM 5/64"   2MM 1/8"   3MM 3/16"   4.5MM 7/32"   6MM 5/16"   8MM 3/8"   10MM
<b>Graters</b>		Fine Hard	Fine Hard	Fine Hard
<b>Dicing Grids</b>		5/16"   8MM 3/8"   10MM 1/2"   12MM 5/8"   15MM	5/16"   8MM 3/8"   10MM 1/2"   12MM 5/8"   15MM	5/16"   8MM 3/8"   10MM 1/2"   12MM 5/8"   15MM 3/4"   20MM 1.1"   25MM
	<b>French Fry Grid</b>			3/8"   10MM Use in combination with 3/8" slice plate

For more information, please visit our website at [www.hobartcorp.com](http://www.hobartcorp.com) or call 1.888.4HOBART.