



HPA Motorsports Inc.
100 - 10185 199B Street
Langley, BC Canada V1M 3W9
P: 604-888-7274 F: 604-888-7276
www.hpamotorsport.com

HPA OnePort Flashing Instructions for MED17 ECU

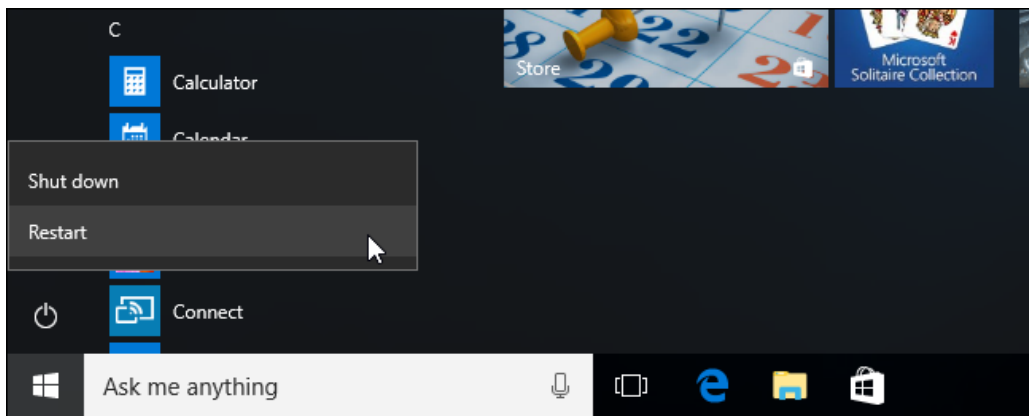
Congratulations on your purchase of the HPA OnePort flashing device. This compact OBD II dongle gives you the power to flash HPA software tunes to your ECU quickly and easily.

The OnePort software is available as a ZIP file for download here:

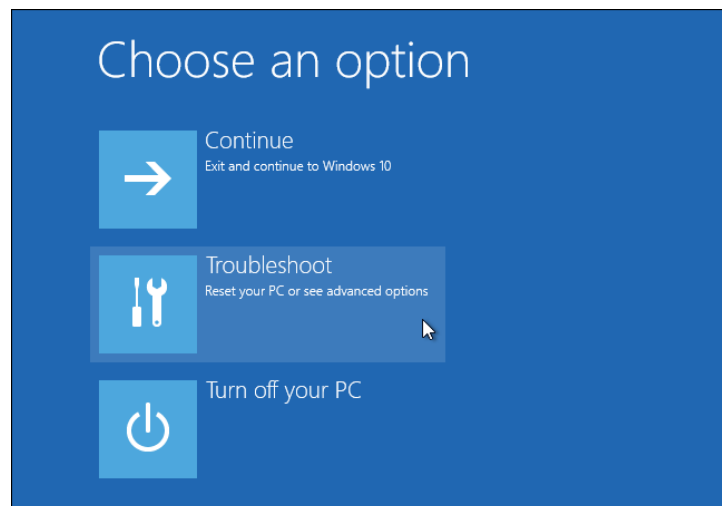
<http://www.hpamotorsports.com/downloads/OnePort-VAG/>

NOTE: Windows 8, 8.1, and 10 users will need to follow these instructions before proceeding:

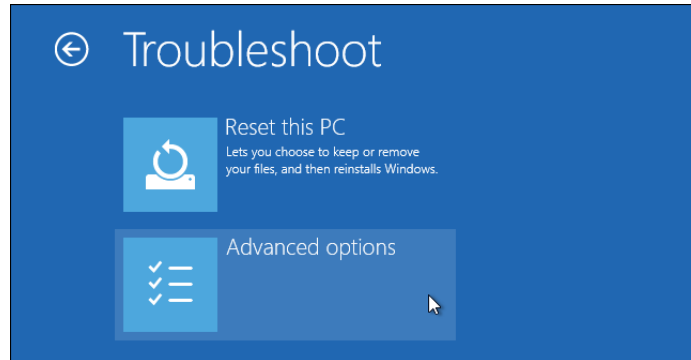
- 1) Hold down the Shift key while you click the “Restart” option in Windows. Your computer will restart into the menu.



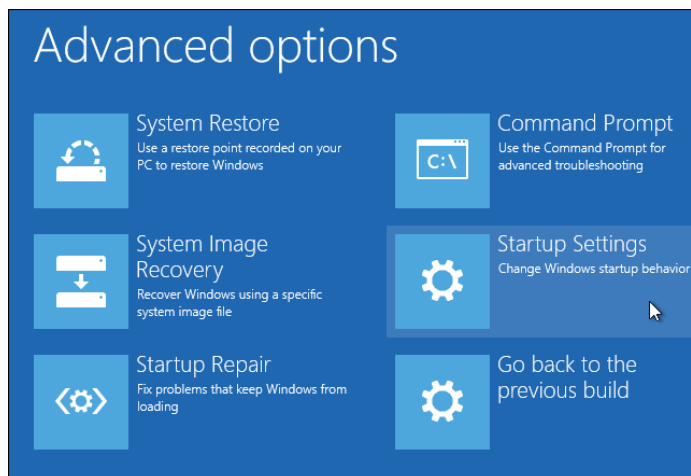
- 2) Select the “Troubleshoot” tile on the Choose an option screen that appears.



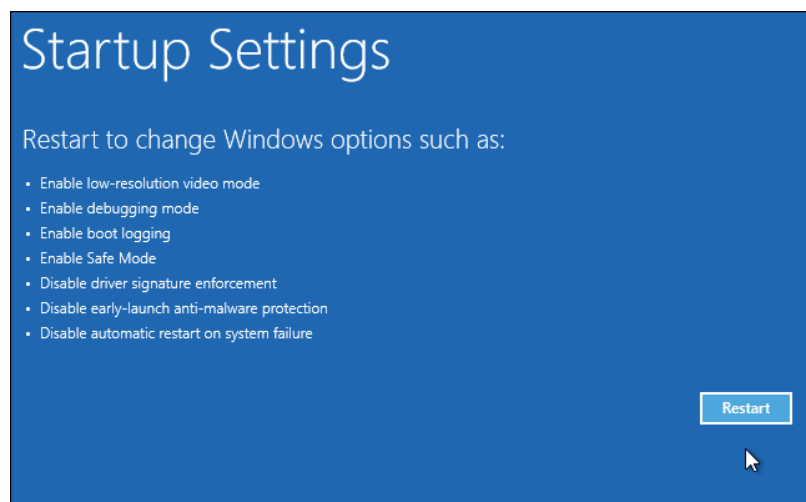
3) Select "Advanced options".



4) Click the "Startup Settings" tile.



5) Click the "Restart" button to restart your PC into the Startup Settings screen.

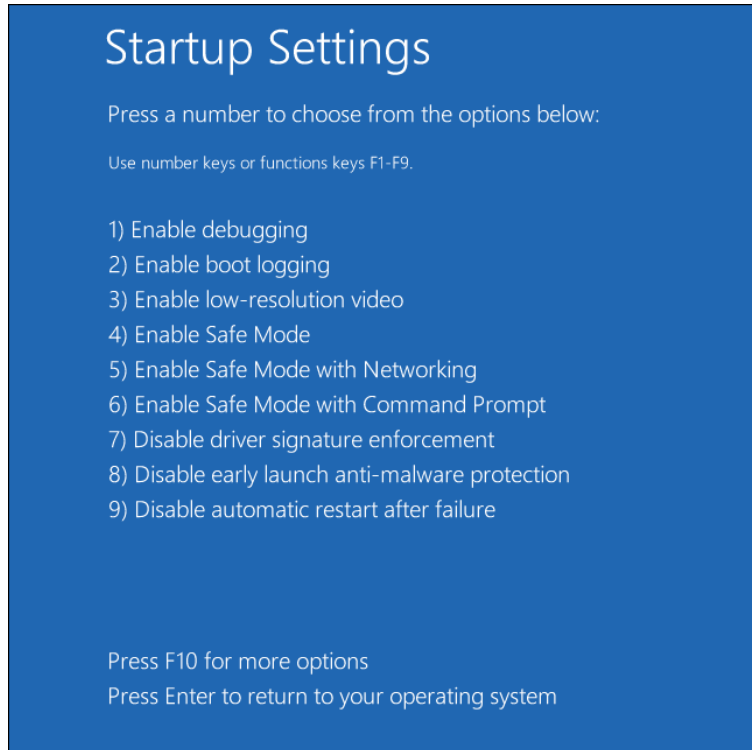




HPA Motorsports Inc.

100 - 10185 199B Street
Langley, BC Canada V1M 3W9
P: 604-888-7274 F: 604-888-7276
www.hpamotorsport.com

- 6) Type “7” or “F7” at the Startup Settings screen to activate the “Disable driver signature enforcement” option.



- 7) Your PC will boot with driver signature enforcement disabled and you’ll be able to install unsigned drivers. However, the next time you restart your computer, driver signature enforcement will be disabled—unless you go through this menu again.

Step 1) Install the OnePort-VAG flashing program:

- 1) Plug the OnePort Dongle into a USB port on your laptop.
- 2) Download and Run the OnePort-VAG installation file on your laptop.
- 3) Follow the instructions throughout the Setup Wizard

- 4) For Windows 7-10, you will receive a security message, you must select the option “Install this driver software anyway” enable for the program to work. If you do not see this message, you will need to repeat steps 1-7 above.



- 5) After a few moments the program will finish installing and take you to a final screen confirming the installation is complete.

Step 2) Find your ECU Box code

- 1) Connect the USB cable directly to an available port on your and connect the other end to the OnePort dongle.
- 2) Plug the OnePort dongle into the OBDII port on your car.
- 3) Make sure both your laptop battery and car battery are fully charged. We recommend you hook the car up to a battery charger/maintainer if available.
- 4) Turn ignition to the ON position but DO NOT START THE CAR



HPA Motorsports Inc.

100 - 10185 199B Street
Langley, BC Canada V1M 3W9
P: 604-888-7274 F: 604-888-7276
www.hpamotorsport.com

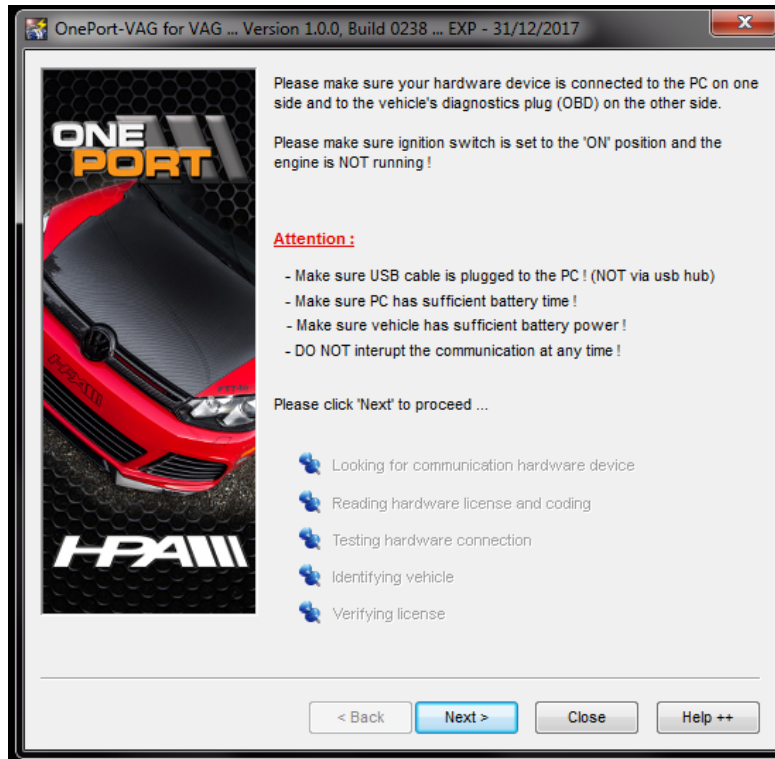
5) Launch the OnePort user interface software by double clicking on the desktop icon and click “Next>”.



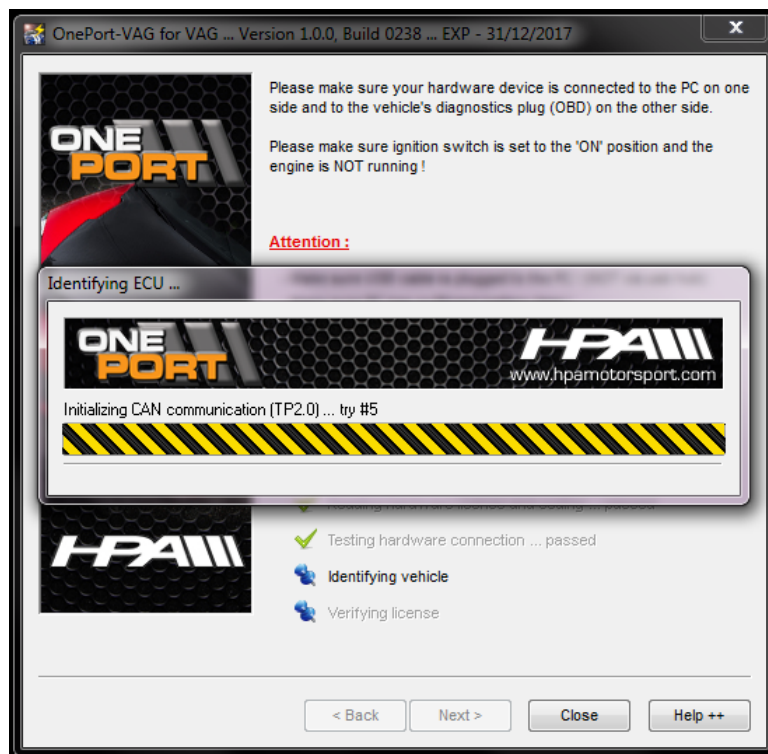
6) Click “Next>” again.



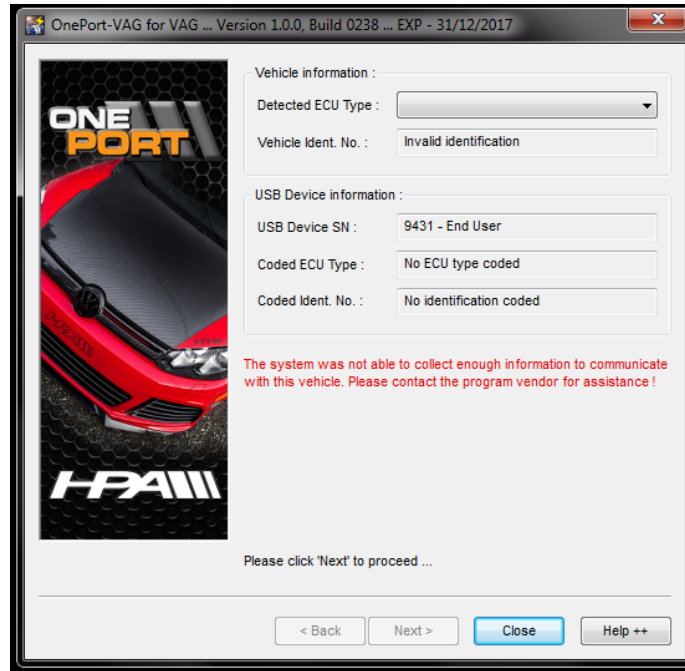
7) Click “Next>” one more time.



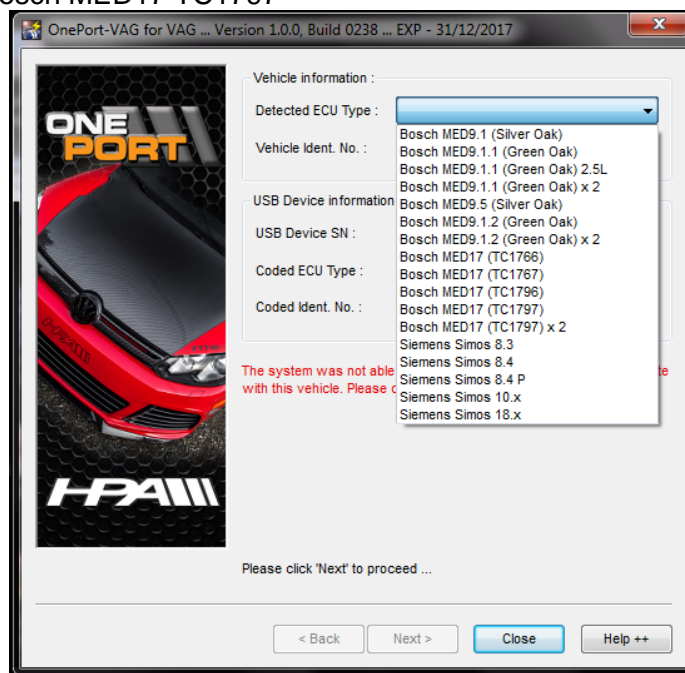
8) The OnePort software will attempt to detect your ECU Type.



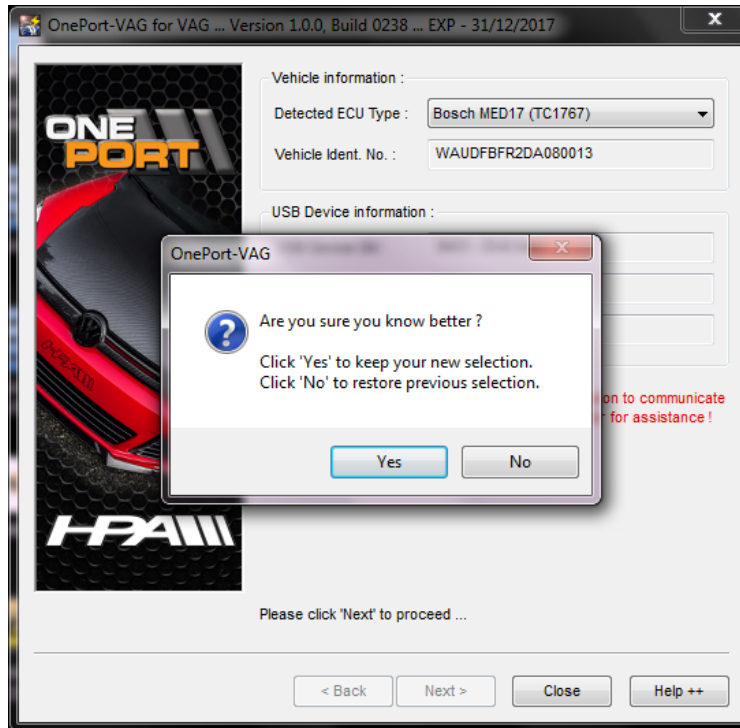
- 9) Please note the red warning at the bottom the page is normal and can be ignored if the ECU type has not been detected.



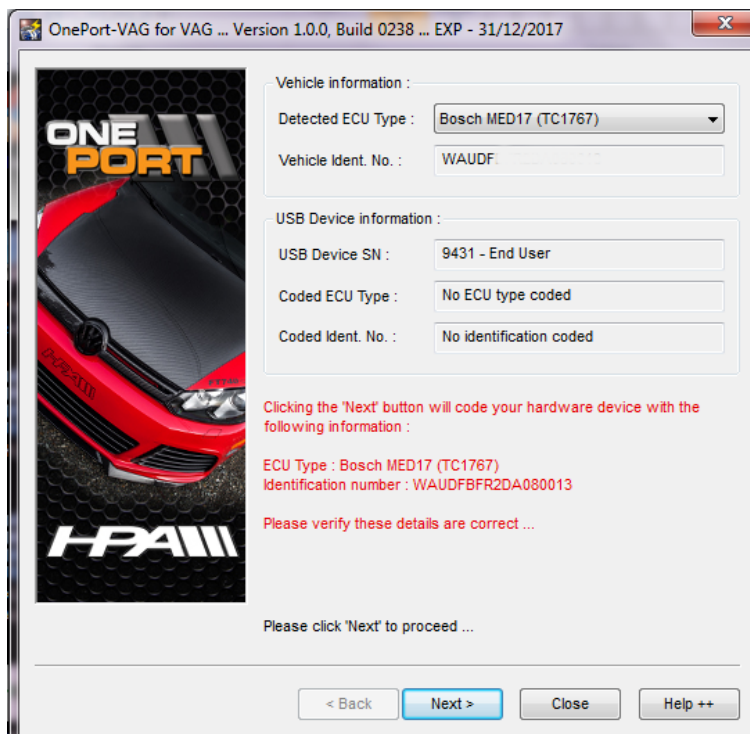
- 10) Select the corresponding ECU type from the pull-down bar at the top of the screen beside “Detected ECU Type”. ECU type selection will be as follows:
- Vehicle model year 2009-2010: “Bosch MED17 TC1766”
 - Vehicle model year 2011-2014 “Bosch MED17 TC1767”
 - Audi A4/A5/Q5 2.0T: “Bosch MED17.1.1 UDS TC1796”
 - Audi 4.0T: “Bosch MED17 TC1797”



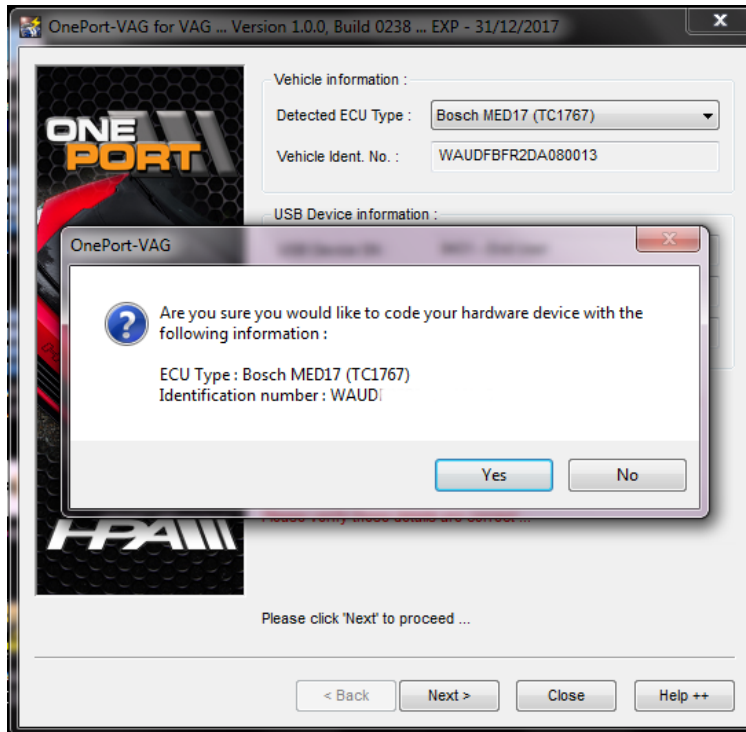
11) You will be prompted to confirm your selection. Click "Yes".



12) Click "Next>" at the following screen where it asks you to code the device.



13) You will then be prompted with a dialog box asking for further confirmation. Click “Yes”.



14) At the “Function” screen, take a screenshot of the information and email it to sales@hpamotorsport.com along with your full name and mod list. The screen should look like this:





HPA Motorsports Inc.

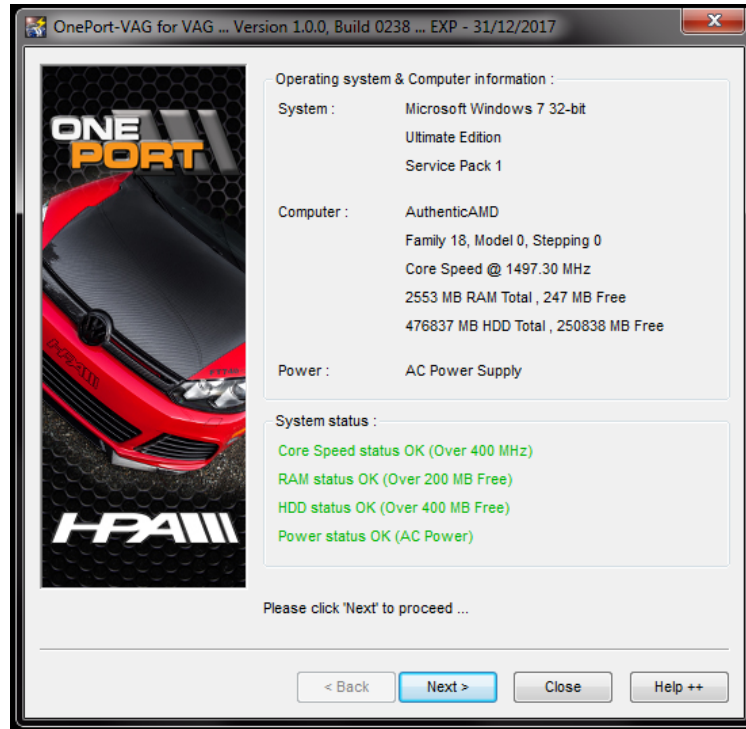
100 - 10185 199B Street
Langley, BC Canada V1M 3W9
P: 604-888-7274 F: 604-888-7276
www.hpamotorsport.com

Step 3) Writing Your ECU

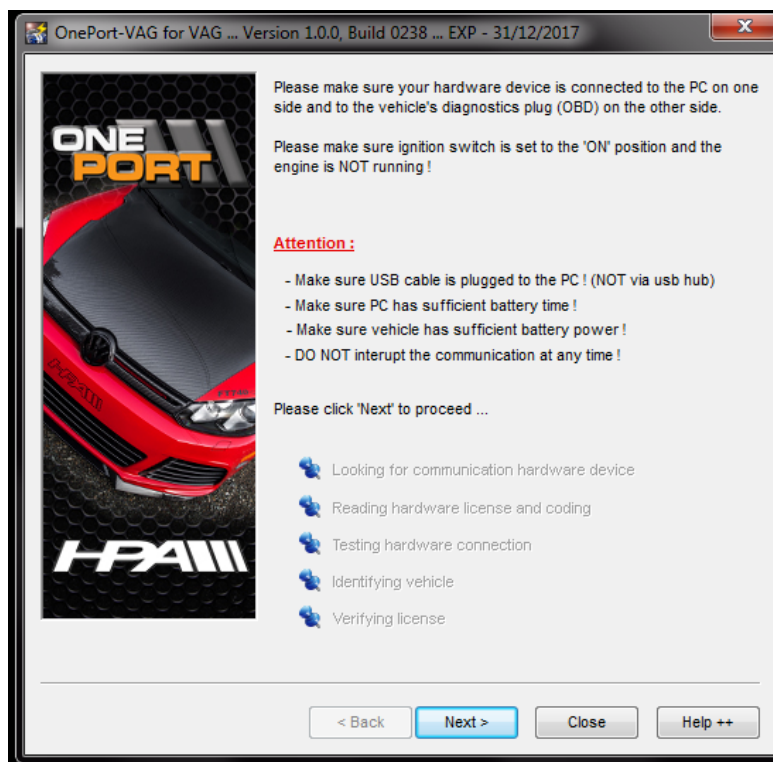
- 1) After receiving via email your tune file from HPA save it to a location you can remember.
- 2) Connect the USB cable directly to an available port on your and connect the other end to the OnePort dongle.
- 3) Plug the OnePort dongle into the OBDII port on your car.
- 4) Make sure both your laptop battery and car battery are fully charged. We recommend you hook the car up to a battery charger/maintainer if available.
- 5) Turn ignition to the ON position but DO NOT START THE CAR
- 6) Launch the OnePort user interface software by double clicking on the desktop icon and click "Next>".



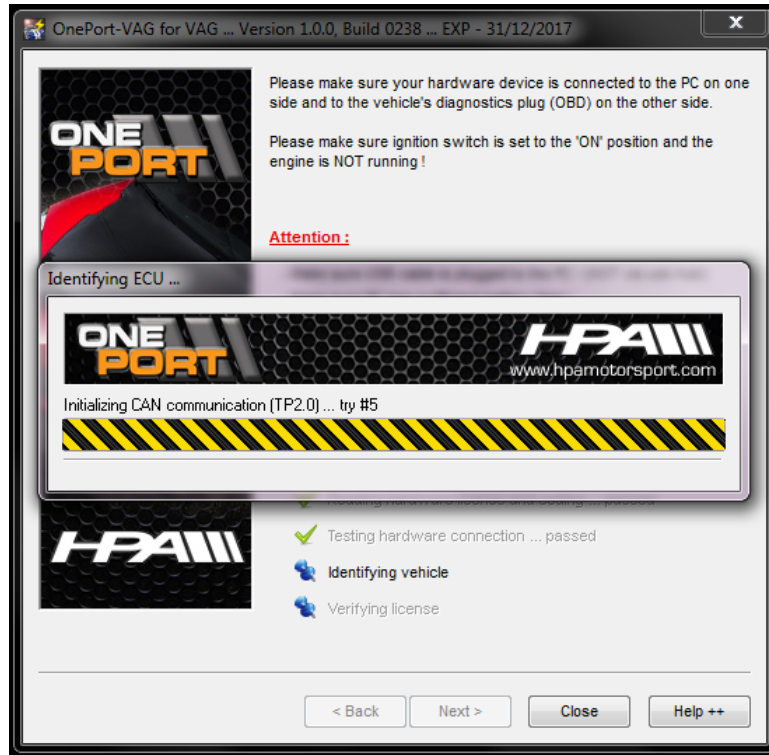
7) Click “Next>” again.



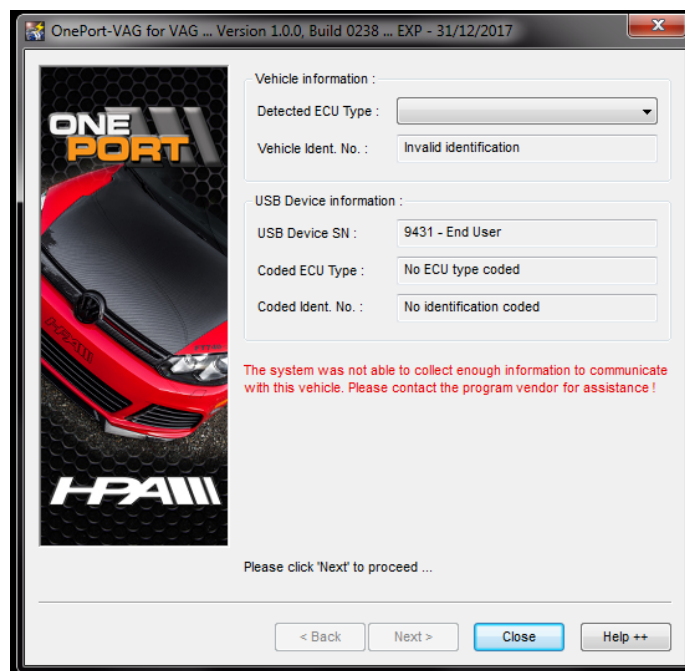
8) Click “Next>” one more time.



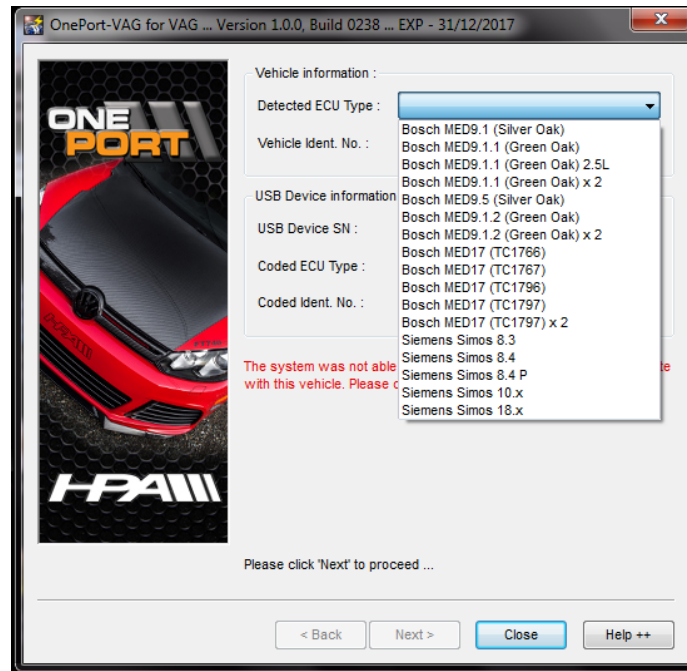
9) The OnePort software will attempt to detect your ECU Type.



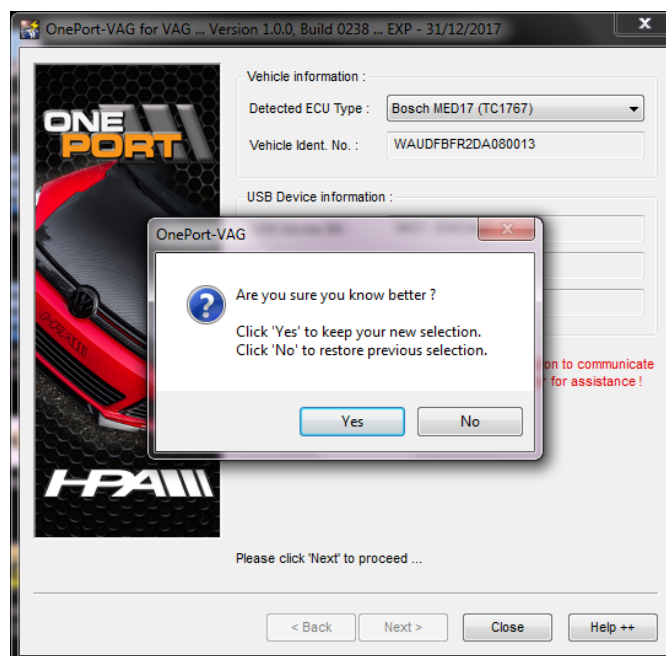
10) Please note the red warning at the bottom the page is normal and can be ignored if the ECU type has not been detected.



- 11) Select the corresponding ECU type from the pull-down bar at the top of the screen beside “Detected ECU Type”. ECU type selection will be as follows:
- e. Vehicle model year 2009-2010: “Bosch MED17 TC1766” (1.5 Mb file)
 - f. Vehicle model year 2011-2014 “Bosch MED17 TC1767” (2.0 Mb file)
 - g. Audi A4/A5/Q5 2.0T: “Bosch MED17.1.1 UDS TC1796”
 - h. Audi 4.0T: “Bosch MED17 TC1797”



- 12) You will be prompted to confirm your selection. Click “Yes”.



13) At the “Function” screen, click on “Software Options”

14)



15) In the software options screen click the “Force Program ECU Memory” checkbox and click “OK”

16) Back at the “Function” screen click on “Program ECU Memory”

17) Select the tuned file provided by HPA and click “Open”. In the case, you selected “Bosch MED17 TC1767”, if you receive an error “Unable to Import File”, please go back to step 11 but select “Bosch MED17 TC1796” instead.

18) The “Programming ECU memory...” status screen will appear and the process can take up to 15 minutes

19) Some ECU versions will tell you to turn the ignition off and then back on. At this point follow the prompts and perform the toggle of the ignition. After you turn the key back on, the cooling fan will begin to run. Do not be alarmed, this is part of the process. This is the reason the car’s battery should be at full charge or on a maintainer before attempting the flashing process.

20) When the process is complete you will be prompted to turn off the ignition, and then click the “Ignition is OFF” button.

21) The software will scan your ECU to confirm that the programming was successful.

22) Remove key from ignition and disconnect the cables from the OBDII port.

23) Start your car and enjoy your new flash!