



**HPA Motorsports Inc.**  
100 - 10185 199B Street  
Langley, BC Canada V1M 3W9  
P: 604-888-7274 F: 604-888-7276  
www.hpamotorsport.com

## HPA OnePort Flashing Instructions for DQ250/DQ381 DSG

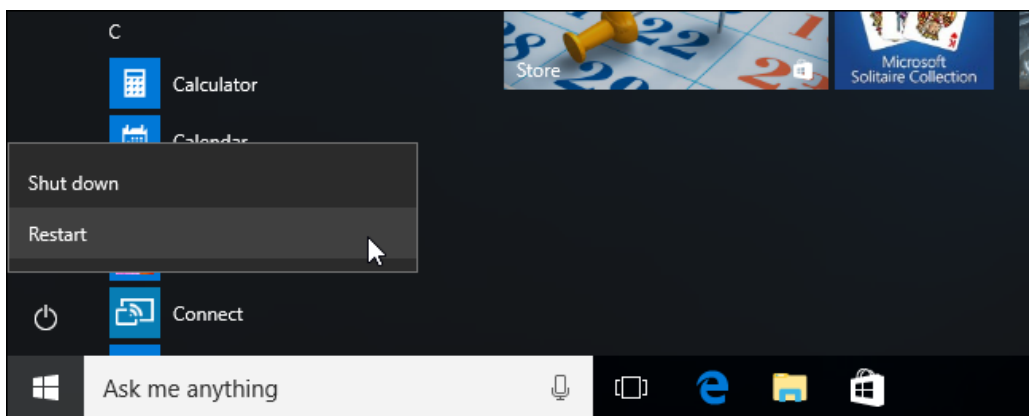
Congratulations on your purchase of the HPA OnePort flashing device. This compact OBD II dongle gives you the power to flash HPA software tunes to your ECU quickly and easily.

The OnePort software is available as a ZIP file for download here:

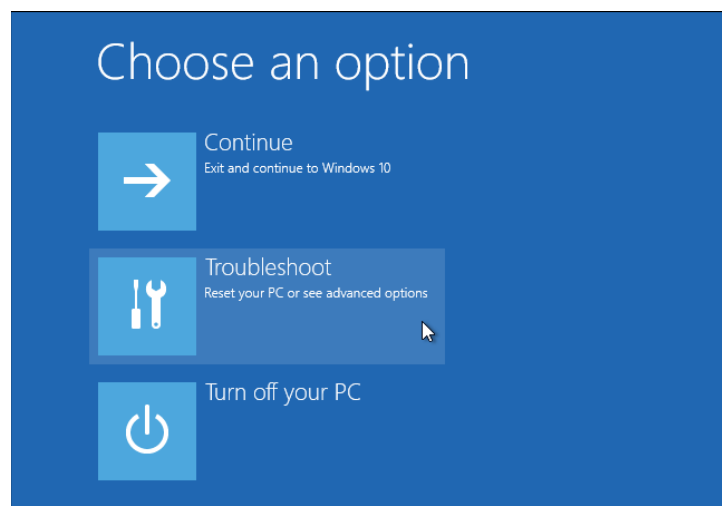
<http://www.hpamotorsports.com/downloads/OnePort-DSG/>

### **NOTE: Windows 8, 8.1, and 10 users will need to follow these instructions before proceeding:**

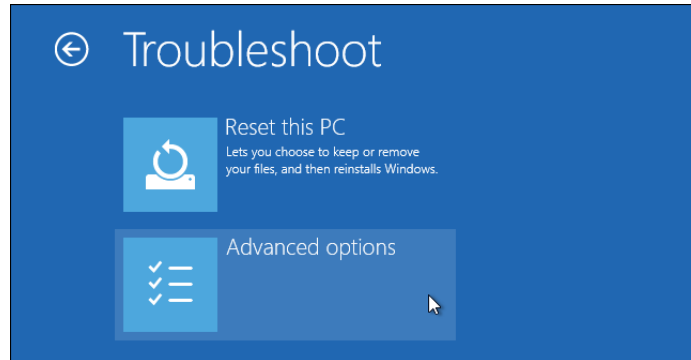
- 1) Hold down the Shift key while you click the “Restart” option in Windows. Your computer will restart into the menu.



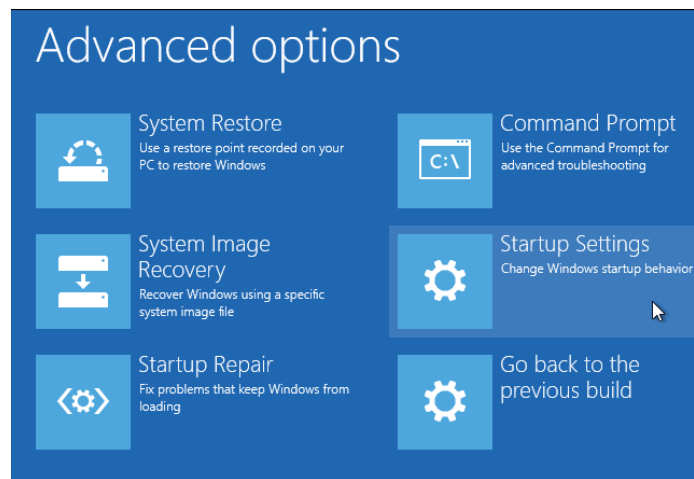
- 2) Select the “Troubleshoot” tile on the Choose an option screen that appears.



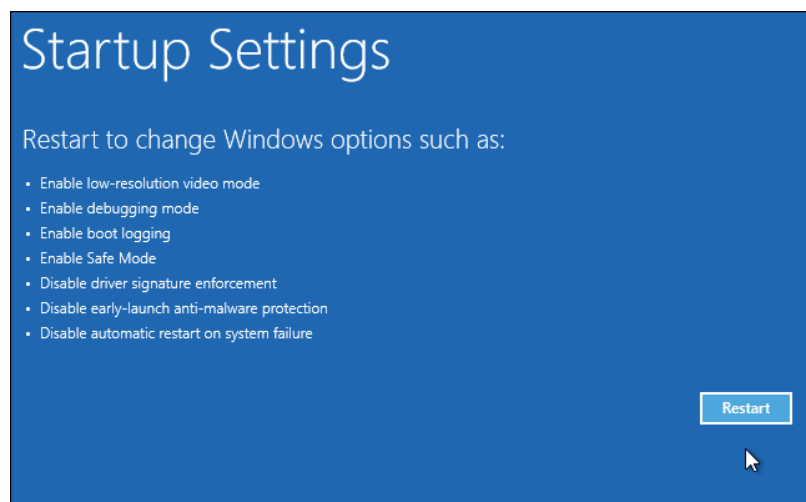
3) Select "Advanced options".



4) Click the "Startup Settings" tile.



5) Click the "Restart" button to restart your PC into the Startup Settings screen.

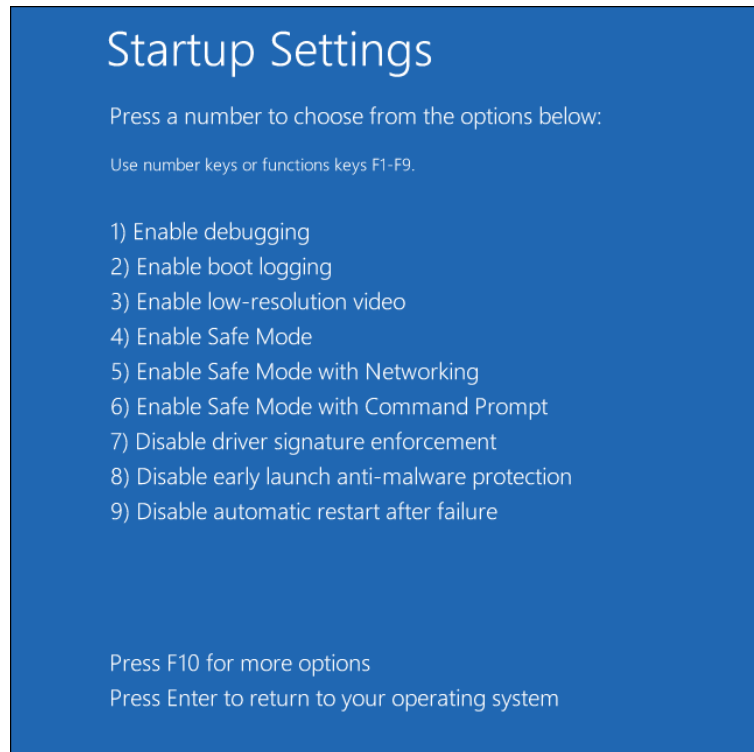




## HPA Motorsports Inc.

100 - 10185 199B Street  
Langley, BC Canada V1M 3W9  
P: 604-888-7274 F: 604-888-7276  
www.hpamotorsport.com

- 6) Type “7” or “F7” at the Startup Settings screen to activate the “Disable driver signature enforcement” option.

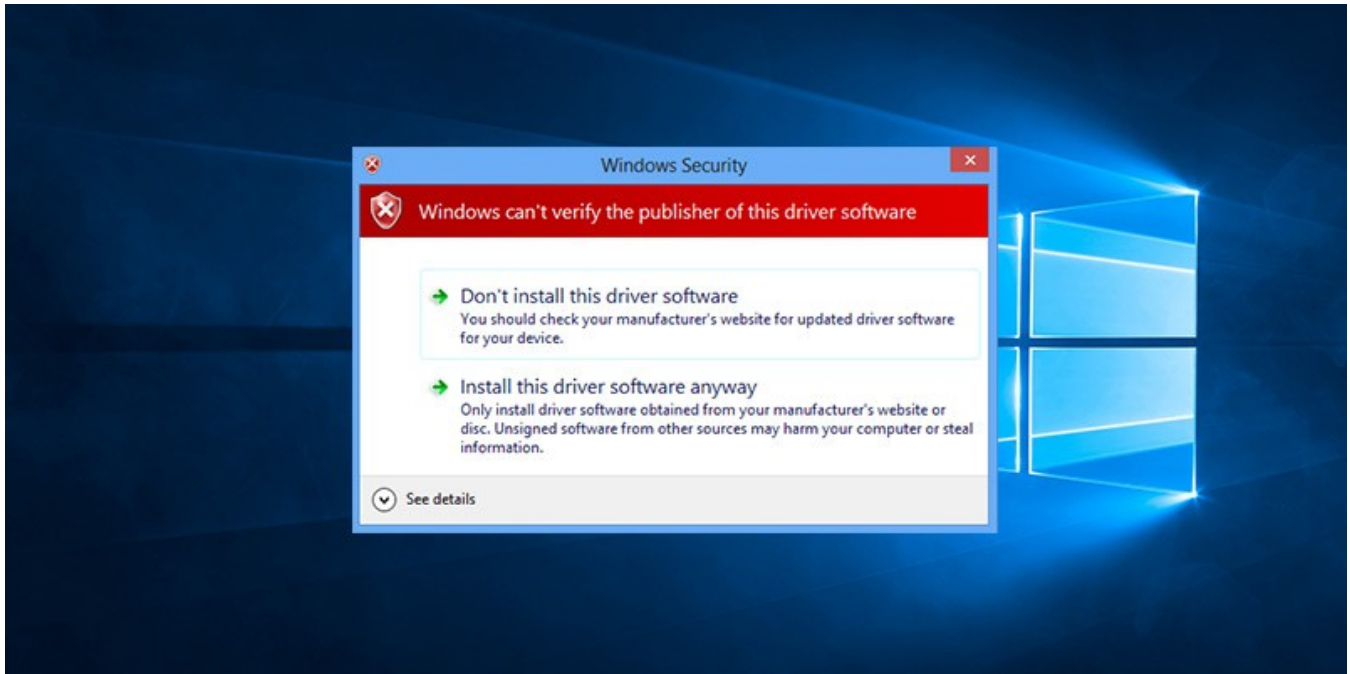


- 7) Your PC will boot with driver signature enforcement disabled and you’ll be able to install unsigned drivers. However, the next time you restart your computer, driver signature enforcement will be disabled—unless you go through this menu again.

### Step 1) Install the OnePort-DSG flashing program:

- 1) Plug the OnePort Dongle into a USB port on your laptop.
- 2) Download and Run the OnePort-VAG installation file on your laptop.
- 3) Follow the instructions throughout the Setup Wizard

- 4) For Windows 7-10, you will receive a security message, you must select the option "Install this driver software anyway" enable for the program to work. If you do not see this message, you will need to repeat steps 1-7 above.



- 5) After a few moments the program will finish installing and take you to a final screen confirming the installation is complete.

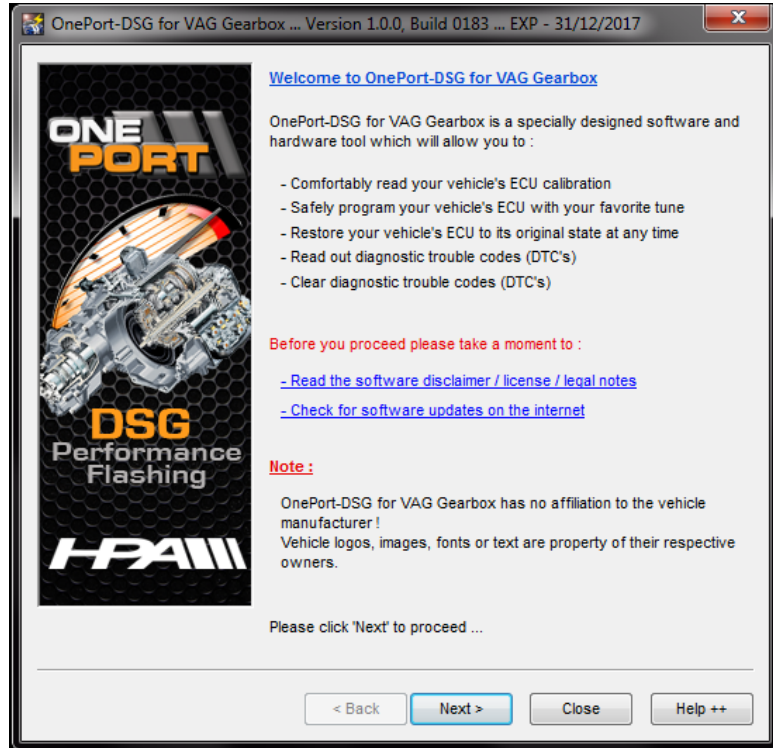
## Step 2) Read the DSG Mechatronic

- 1) Connect the USB cable directly to an available port on your and connect the other end to the OnePort dongle.
- 2) Plug the OnePort dongle into the OBDII port on your car.
- 3) Make sure both your laptop battery and car battery are fully charged. We recommend you hook the car up to a battery charger/maintainer if available.
- 4) Turn ignition to the ON position but DO NOT START THE CAR

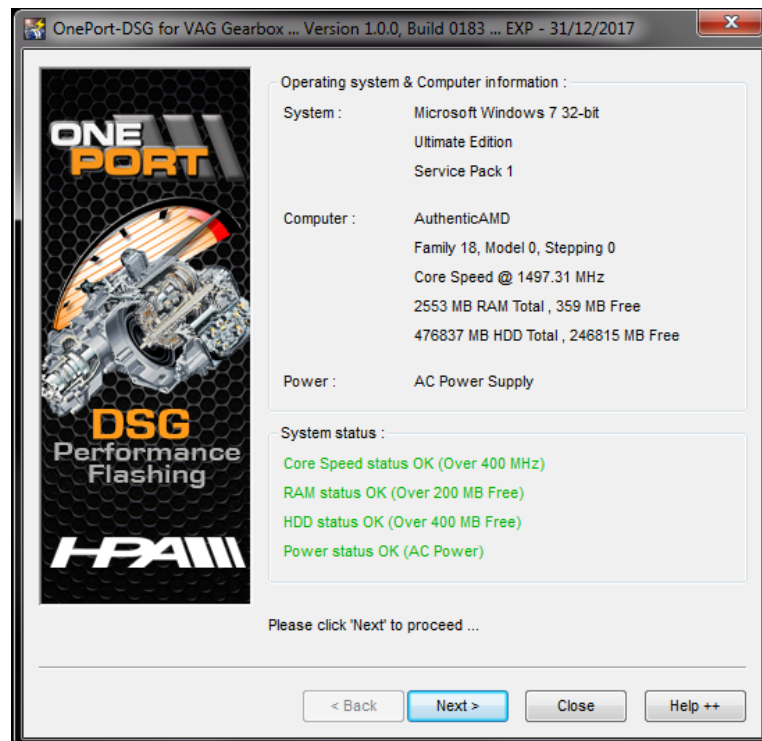


**HPA Motorsports Inc.**  
100 - 10185 199B Street  
Langley, BC Canada V1M 3W9  
P: 604-888-7274 F: 604-888-7276  
www.hpamotorsport.com

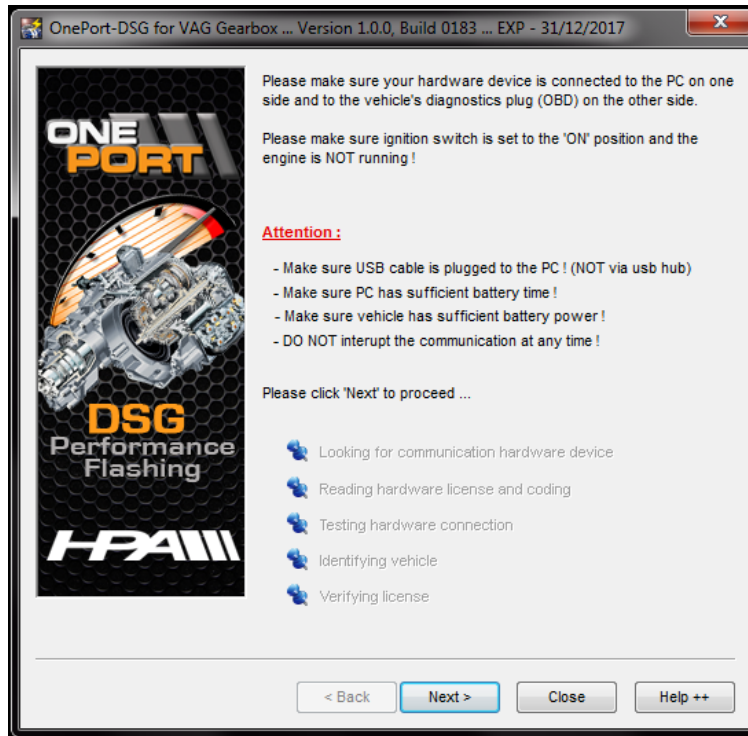
5) Launch the OnePort user interface software by double clicking on the desktop icon and click “Next>”.



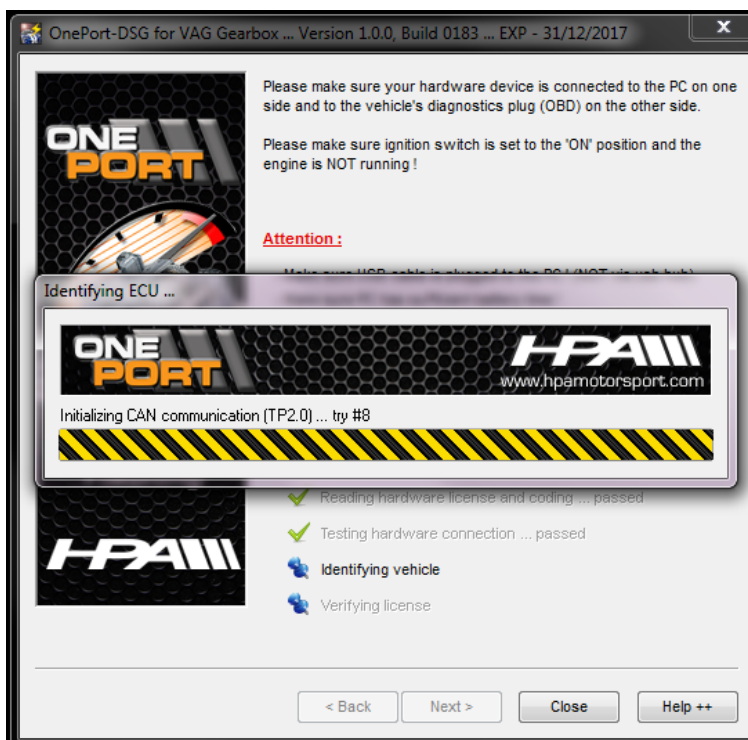
6) Click “Next>” again.



7) Click "Next>" one more time.

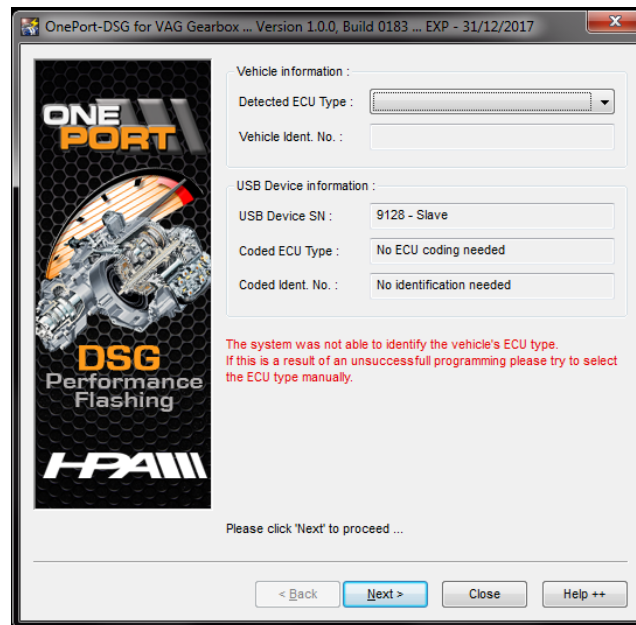


8) The OnePort software will attempt to detect your DSG Mechatronic Type.

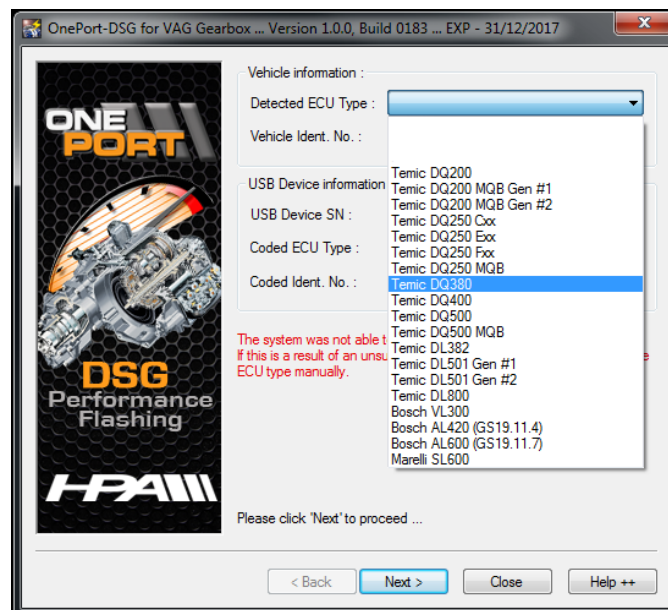




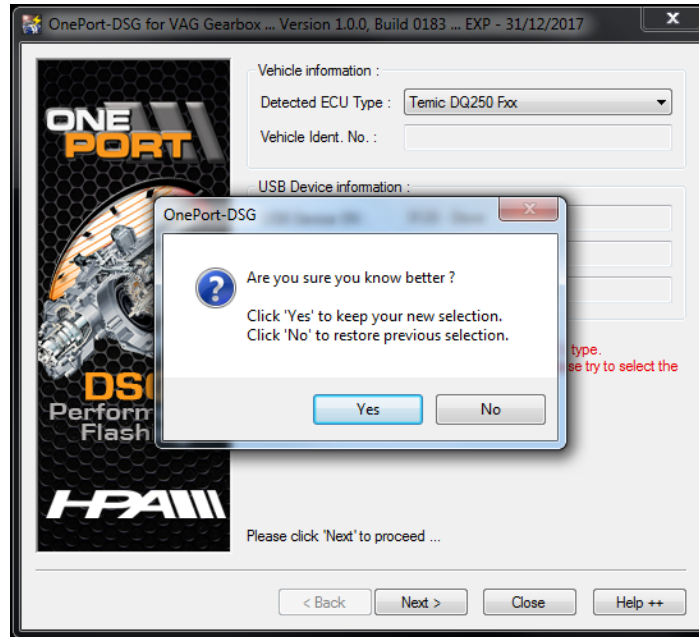
- 9) Please note the red warning at the bottom the page is normal and can be ignored if the ECU type has not been detected.



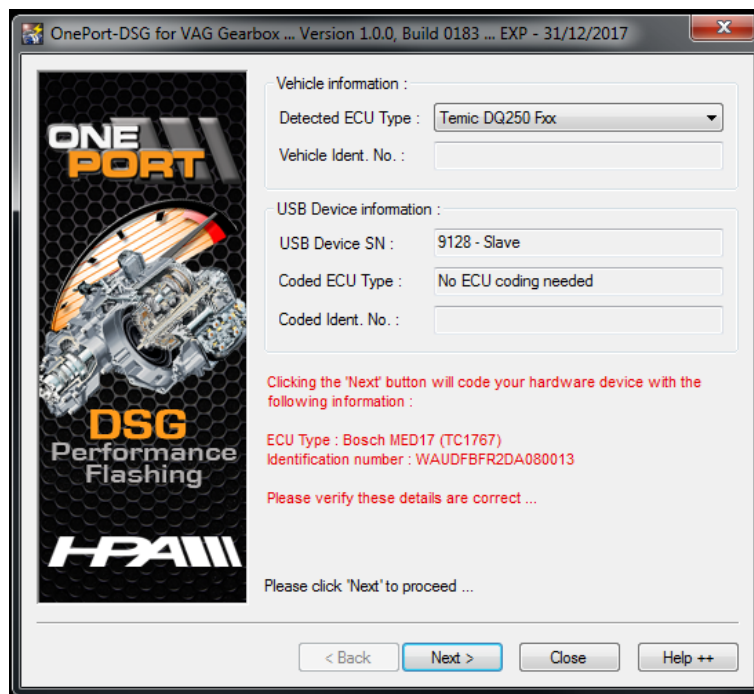
- 10) Select the corresponding DSG Gearbox type from the pull-down bar at the top of the screen beside "Detected ECU Type". DSG DQ250 Gearbox selections will be as follows:
- Model year < 2009 – Temic DQ250 Cxx
  - Model year 2009 to 2011 – Temic DQ250 Exx
  - Model year 2012 to 2015 (Not MQB) – Temic DQ250 Fxx
  - Model year > 2015 (MQB) – Temic DQ250 MQB
  - Model year > 2018 Golf R (7 Speed) – Temic DQ380



11) You will be prompted to confirm your selection. Click “Yes”.

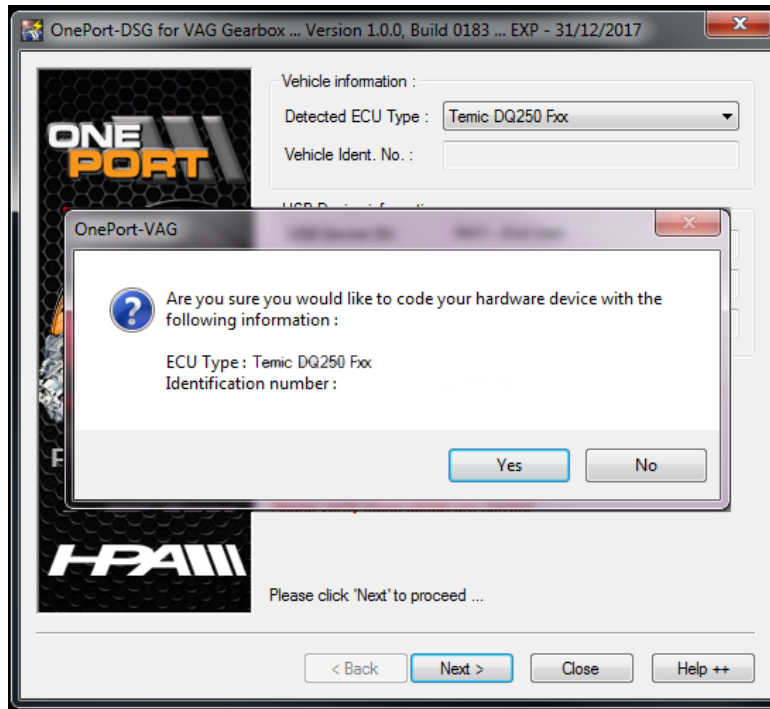


12) Click “Next>” at the following screen where it asks you to code the device.



13) You will then be prompted with a dialog box asking for further confirmation. Click “Yes”.





- 14) At the “Function” screen, where you have an option to “Read ECU Memory”, turn off the vehicle ignition and remove the OnePort dongle from the OBD2 port. **DO NOT** close the OnePort program or disconnect the USB cable from the laptop or dongle.
- 15) At this point, remove the intake air box. Under the air box you will find the DSG connector.



16) Rotate the tab on the connector counter-clockwise to unlock and remove.



17) Now install the adapter cable's round connector onto the DSG mechatronic. Rotate the tap clockwise to click it in place.





**HPA Motorsports Inc.**

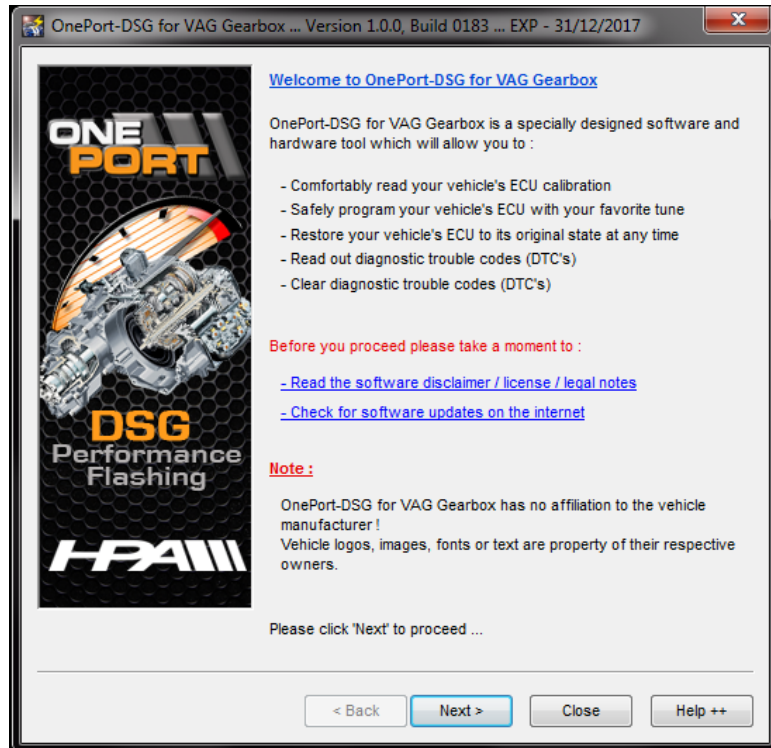
100 - 10185 199B Street  
Langley, BC Canada V1M 3W9  
P: 604-888-7274 F: 604-888-7276  
www.hpamotorsport.com

- 18) Connect the OnePort Dongle to the OBD2 port on the cable.
- 19) Connect the alligator clips from the cable to the battery.
- 20) On the laptop "Function" screen click "Read ECU Memory"
- 21) When prompted, select a folder location you can remember and save the to the recommended file name.
- 22) The "Reading ECU memory..." status screen will appear and the process can take up to 15 minutes
- 23) When the process is complete you may prompted to turn off the ignition, if so click the "Ignition is OFF" button.
- 24) Remove key from ignition and disconnect the cables and reinstall OEM plug and airbox.
- 25) Email the file you saved to HPA.

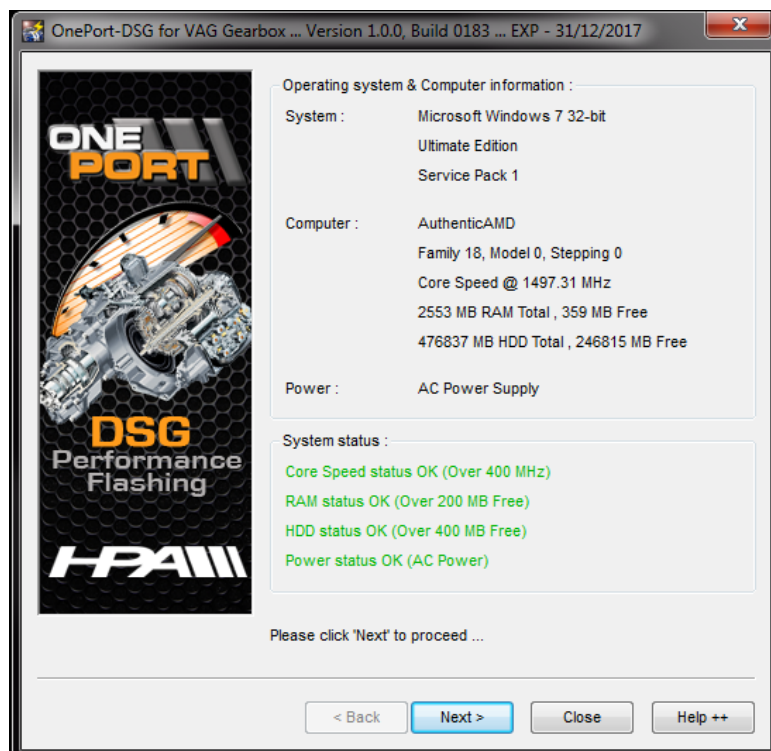
**Step 3) Write the new DSG tune file**

- 26) Connect the USB cable directly to an available port on your and connect the other end to the OnePort dongle.
- 27) Plug the OnePort dongle into the OBDII port on your car.
- 28) Make sure both your laptop battery and car battery are fully charged. We recommend you hook the car up to a battery charger/maintainer if available.
- 29) Turn ignition to the ON position but DO NOT START THE CAR

30) Launch the OnePort user interface software by double clicking on the desktop icon and click “Next>”.

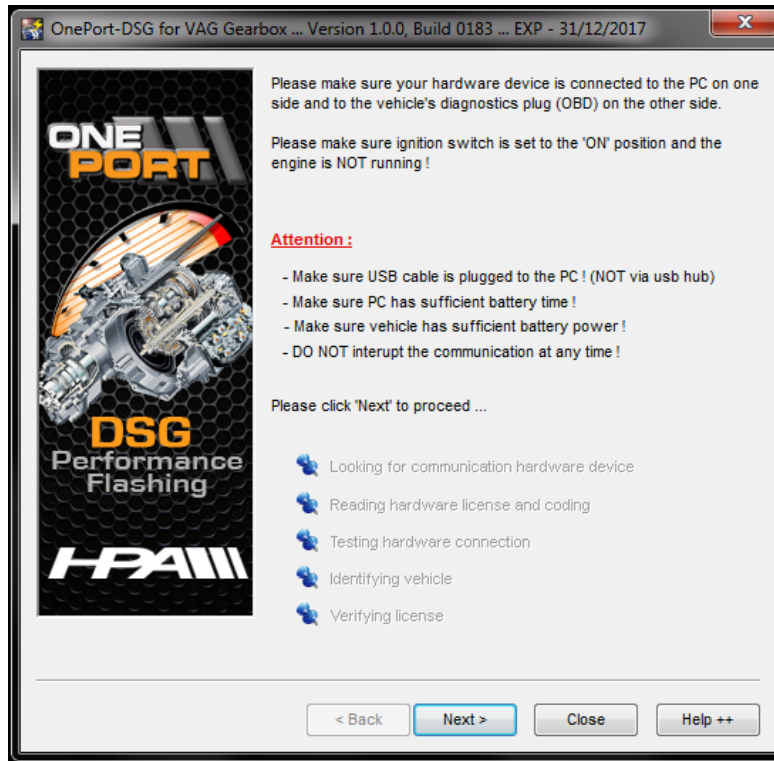


31) Click “Next>” again.

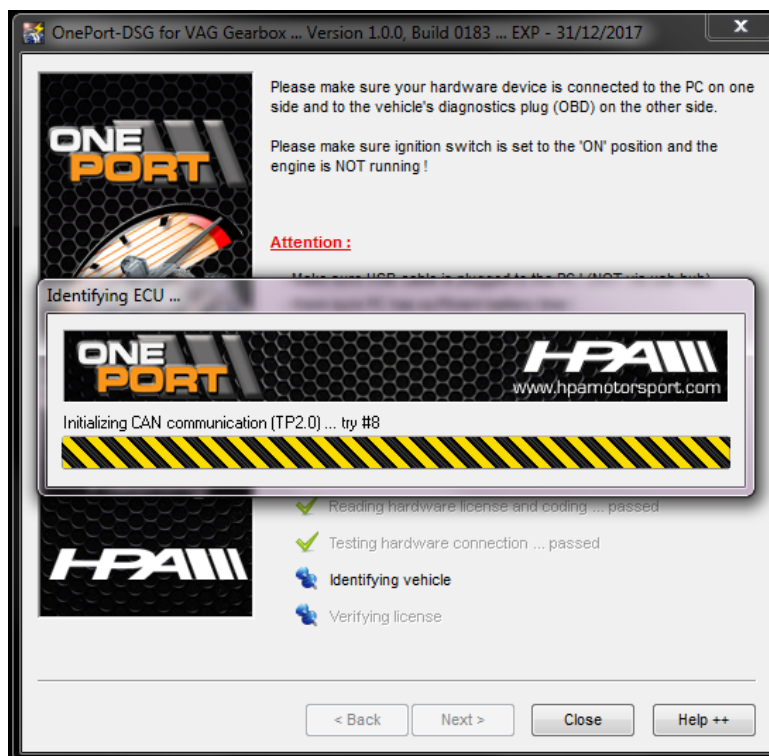




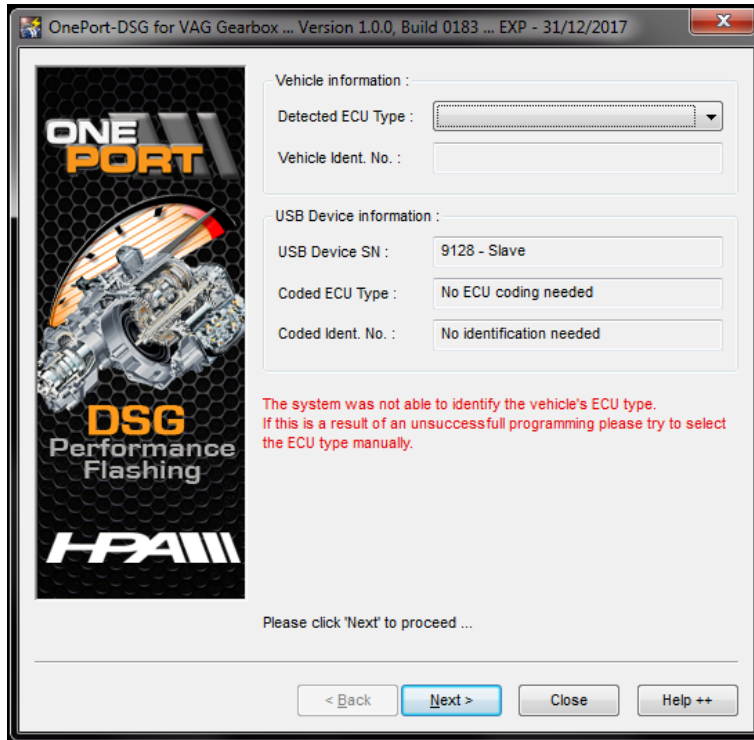
32) Click "Next>" one more time.



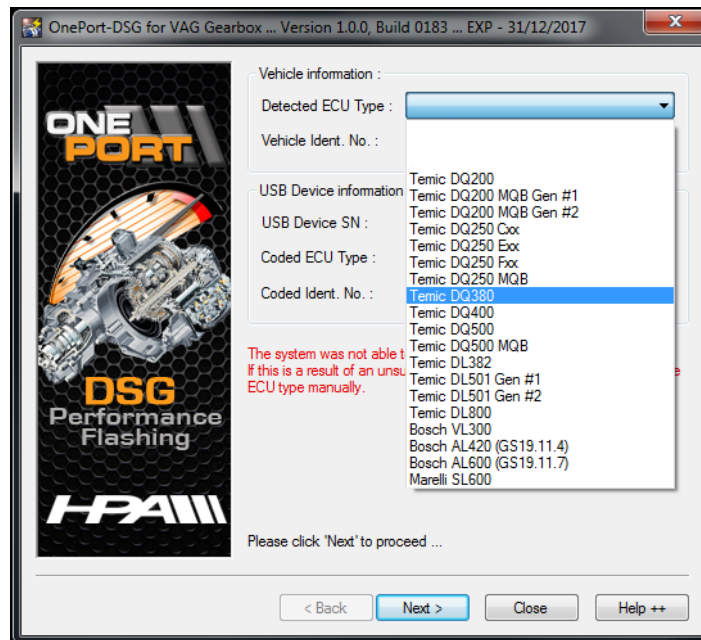
33) The OnePort software will attempt to detect your DSG Mechatronic Type.



34) Please note the red warning at the bottom the page is normal and can be ignored if the ECU type has not been detected.

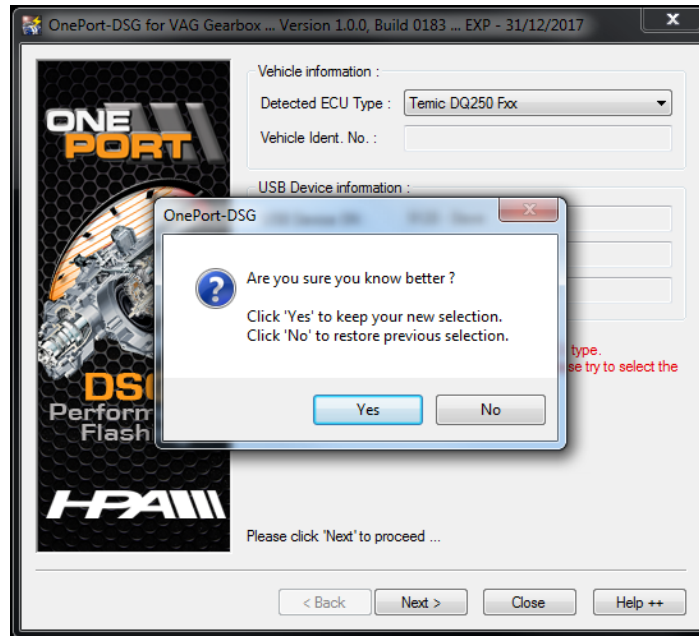


35) Select the corresponding DSG Gearbox type from the pull-down bar at the top of the screen beside "Detected ECU Type" the same as you selected during the read process.

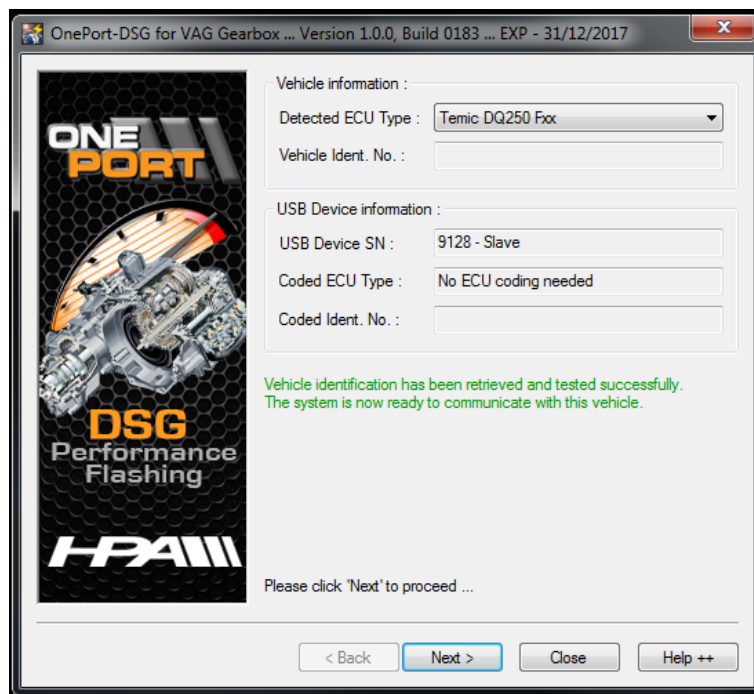




36) You will be prompted to confirm your selection. Click “Yes”.



37) Click “Next>” at the following screen.



38) At the “Function” screen, click on “Program ECU Memory”.

39) Select the tuned file provided by HPA and click “Open”



**HPA Motorsports Inc.**

100 - 10185 199B Street  
Langley, BC Canada V1M 3W9  
P: 604-888-7274 F: 604-888-7276  
[www.hpamotorsport.com](http://www.hpamotorsport.com)

- 40) When the process is complete you may be prompted to turn off the ignition, if so click the "Ignition is OFF" button.
- 41) Remove key from ignition and disconnect the cables from the OBDII port.
- 42) Start your car and enjoy your new flash!