

# Outdoor Thermal Monocular

## User Manual



Version : V1.2 Modify Date : 2020/11/2

## 目录

Introduction.....	2
Announcement and Safety.....	2
Specification.....	3
Diagram.....	4
Operation.....	5
Battery Recharge.....	6
Battery Installation.....	7
Output Color.....	8
Service.....	10

## Introduction

Outdoor thermal image telescope, with advanced uncooled focal plane infrared detector and high quality optical lens as the core, combined with convenient and fast operating system, small shape design, functional extension spare parts, long life, durable, suitable for all kinds of environments, creating a "clear imaging, simple operation, easy to carry" infrared thermal imaging tool for users.

This product is used in wild animal observation, search and rescue, police law enforcement investigation, night patrol, outdoor sports, personal security, etc. This product has the function of taking photos, which can be connected to the computer via USB to browse the

photos taken, convenient for multiple people to observe at the same time, and create possibilities for more application occasions.

## Announcement and Safety

To ensure correct use of this product, please read the instructions carefully:

- Do not use this product in flammable, explosive, wet or corrosive environments.
- This product contains precision electronics and sensitive optical devices, do not hit and drop, so as not to cause damage.
- Do not disassemble or modify the product without permission.
- The outer shell of this product should be cleaned with wet cloth or weak soap. Do not use abrasive, isopropyl alcohol or solvent.

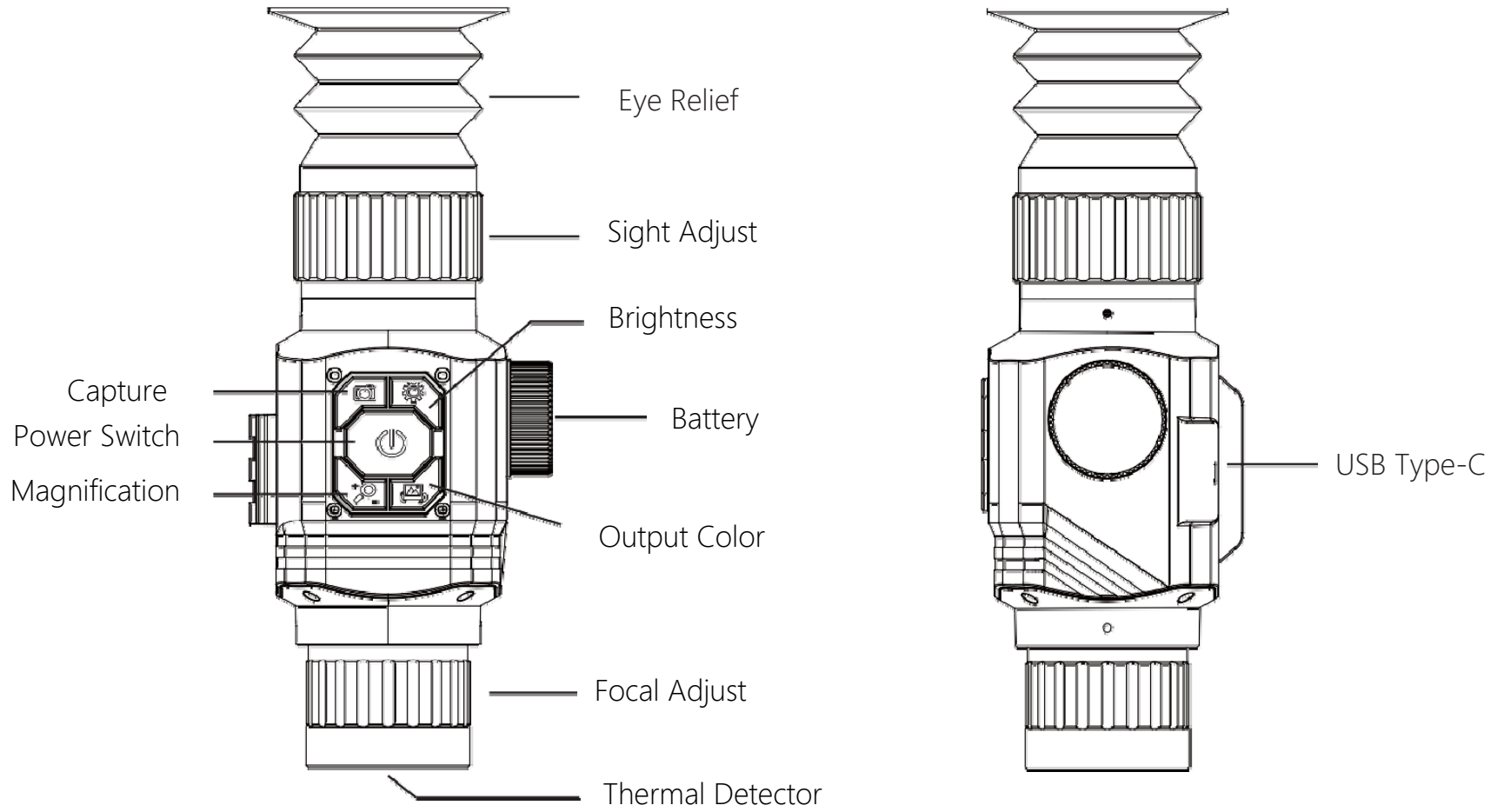
Lenses and screens should be cleaned with professional lens cleaner.

\*\*\*When this product works, there will be a slight clicking sound every few seconds, which is a normal phenomenon for the lens to capture images.\*\*\*

## Specification

Detector Type	Uncooled
Detector Resolution	384x288
LCD Display	1024X768
Focal Length	25mm; 35mm; 54mm; 75mm
Ocular	Monocular
FOV	14.9°x11.2°; 10.7°x8.0°; 6.9°x5.2°; 5.0°x3.7°;
Magnification	2x; 4x
Wavelength	8µm to 14µm
FPS	50Hz
Output Color	Rainbow,Hot metal,White Hot,Black Hot
Focal	Adjustable
Battery	Build-in Rechargeable
Storage	8G
Image Format	BMP
USB	Type-C
Work Period	6 hrs
Auto-Sleep	40 mins
Weight	500g
Dimension	180x72x62mm (25mm focal)
Waterproof	IP66
Work Temp	-10°C to 45°C


# Diagram



## Operation

- Power on/off: Hold "⏻" button.
- Image Capture: Press "📷" Button, capture image, Screen will display "📷", image save successful. Image capture works every 2 seconds, can not take picture when image enlarge.
- Image export: Via USB Type-C connect to PC.
- Output Mode Switch: Press "🖨️" button, switch between rainbow, hot metal, white hot, black hot modes.
- Magnification: During Power on, Press "⏪" button, each press will display "2X, 4X" and image will enlarge.
- Show/Hide Reticle: During power on status, Short press power button "⏻".
- Adjust Reticle:
  1. Short press "⏻" show zone line.
  2. Press again "⏻" button, enter adjust status, "CAL-MODE" will show on top left corner screen.
  3. Press to adjust:

press "📷" move up

press "🔍" move left        press "🖨️" move right;

press "⚙️" move right;
  4. then press "⏻" button again to save.
- Screen Brightness: During power on status, Press "⚙️" button to adjust, each press increase one level brightness.
- Dioptre adjust: turn dioptre knob to suitable view
- Focal adjust: Clock wise to wide, counter clock wise to tele.

## Battery Recharge

This product has a built-in rechargeable battery. When the battery is low, please charge it in time. It can pass through two ways

Method 1:

Charge the battery through the USB Type-C interface of the thermal image telescope, and unplug the USB cable after full charge.

Method 2:

1. Unscrew the battery cover and remove the battery.
2. Charge the battery with the charger distributed by the original factory, and install the battery correctly according to the polarity indication on the charger.

3. Turn off the charger and remove the battery after it is fully charged.

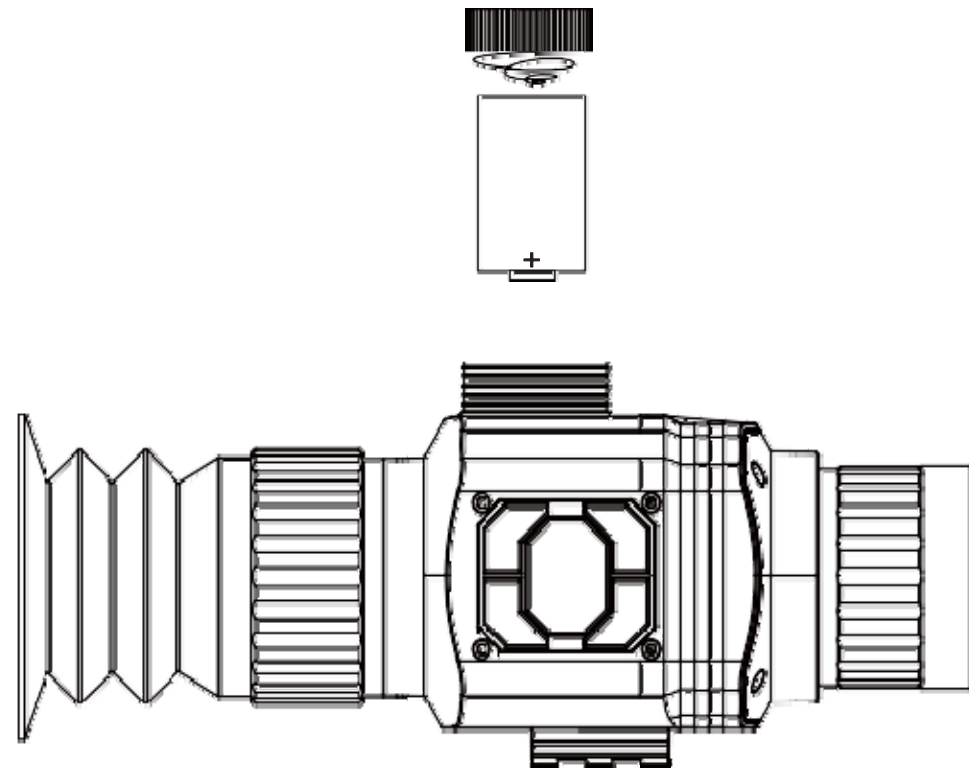
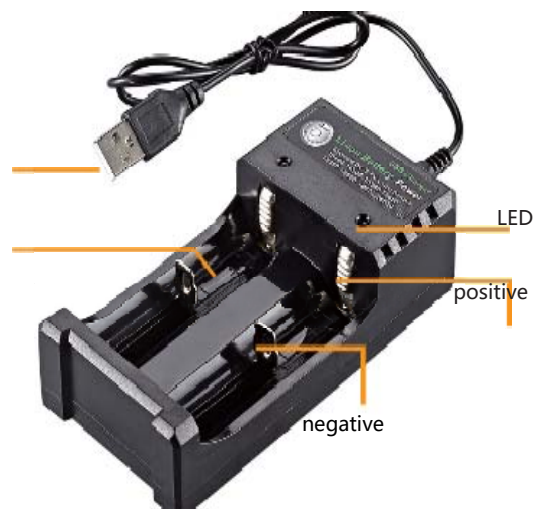
**Tip: If you do not use this product for a long time, charge it at least once for three months to avoid too long storage time, battery is too low due to self-discharge, causing irreversible capacity loss.**

# Battery Installation

1. Open the battery cover: Turn counter-clock wise.

2. Plug in battery: Positive in, Negative out

3. Cover back: turn clock wise to close.

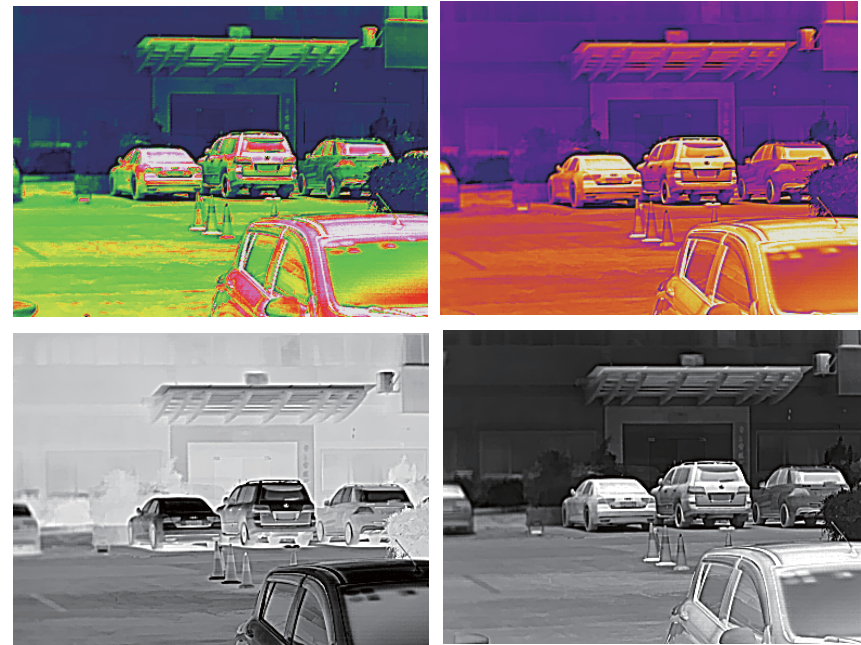


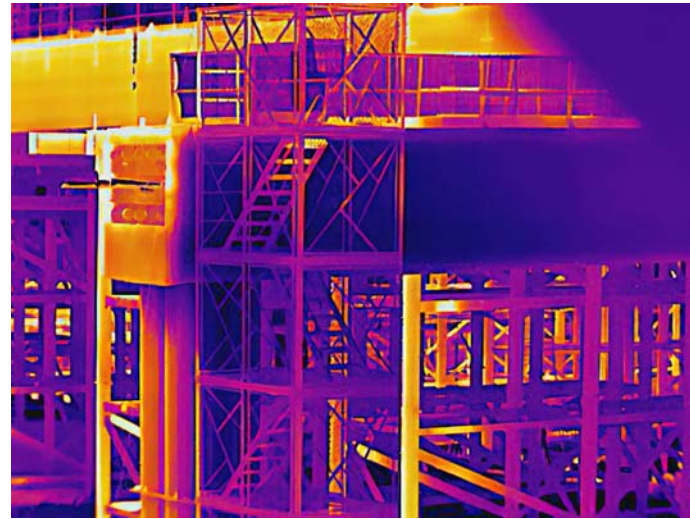
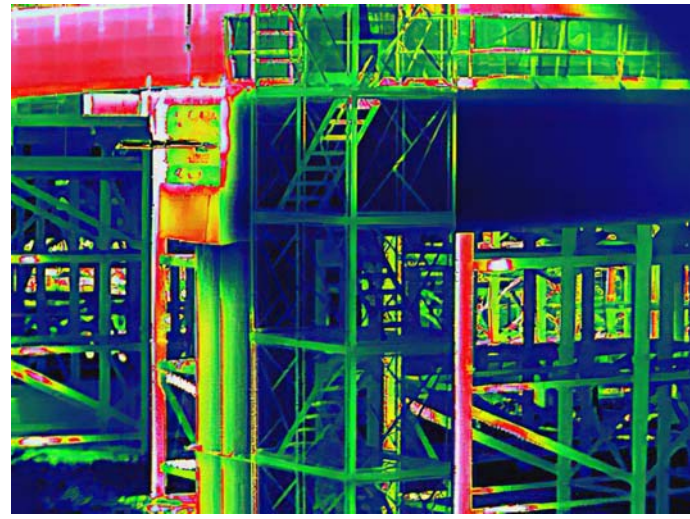


## Output Color

The palette menu can change the false color of the infrared thermal image, and four palettes are provided, respectively: Rainbow, hot metal, white heat, black heat. Choosing the right color palette shows the object in more detail. For rainbows, the hot metal palette focuses on display colors and is ideal for high thermal contrast situations to improve color contrast between high and low temperatures. However, the white-hot palette provides uniform linear colors.

Four color palettes produced by the image effects:





## Service

Dear customers,

Thank you for your purchase of our products, which are guaranteed from the date of sale.

Within the warranty period, install and use the products in accordance with the instructions in normal environment and conditions. If the products fail due to the original materials and the processing process, you can enjoy free maintenance service with the warranty certificate. Please keep this warranty certificate properly. If lost, it will not be reissued.

In order to avoid problems in the process of use, we recommend that you familiarize yourself with the instructions before starting to use the product. Under the following circumstances, the product is not covered by the warranty:

1. The original valid warranty certificate cannot be presented;
2. Damage caused by product installation not meeting product requirements and relevant specifications;
3. Damage caused by improper use or storage of the product or unauthorized dis-assembly or maintenance of the product;
4. Damage caused by natural disasters (earthquake, flood, lightning strike), external disasters (fire, house collapse), etc.
5. Over warranty.

Notes:

1. In case of product failure, repair or replace the new or good product as appropriate after inspecting the product;

2. For the products beyond the warranty period, it will examine the products and decide whether to repair or replace the components, and charge relevant fees for the maintenance and replacement services as appropriate.

1. The product is in normal operation and has not been dismantled or repaired since the date of purchase. It is confirmed to be a product quality problem by the warranty personnel, and shall enjoy the warranty service within one year. 2. Warranty certificates should be filled out at the time of purchase. Please bring the warranty certificate when the product is maintained.

Customer	Date	Model	Distributor

Service Record:

