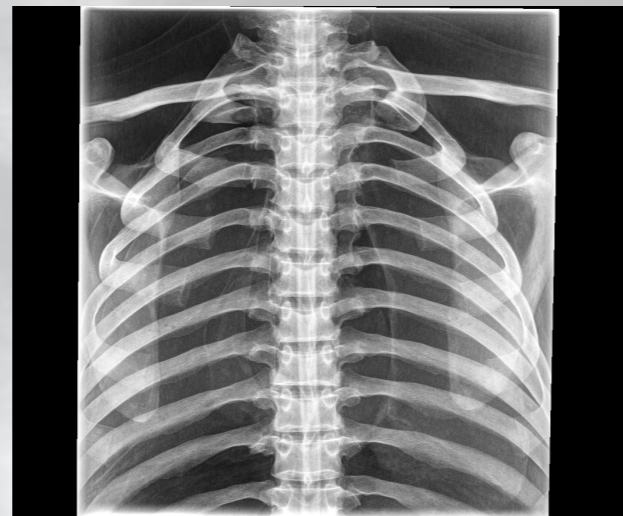


Real Human Bones

Torso Phantom



Thorax X-ray phantom, consisting of spine (c6 to L3), thoracic cage, shoulder blades and collar bones, embedded in soft materials. Mounted without metal parts. Organs (lung, heart, kidneys) are present as outlines to create a shadow on the x-ray image. The natural bones used may have, depending on availability, individual pathological changes, minor structural defects or mounting holes



+1 888 437 3900

info@gtsimulators.com



GTSimulators.com

info@GTSimulators.com



Real Human Bones

X-RAY PHANTOMS



Real bones - perfect x-ray images



www.erler-zimmer.de

info@erler-zimmer.de

Real Human Bones

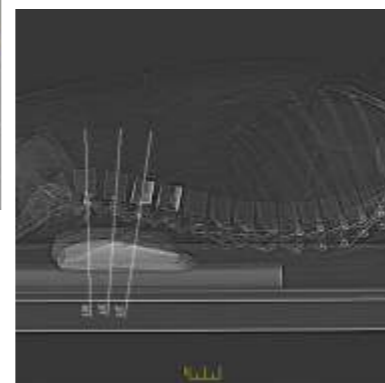
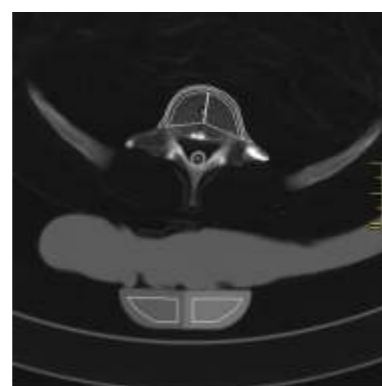
Full Body Phantom

Training of medical imaging is a major aspect in education of radiologic technologists. While x-ray screening of patients is highly restricted, the EZ x-ray manikin may endure an unlimited number of scans.



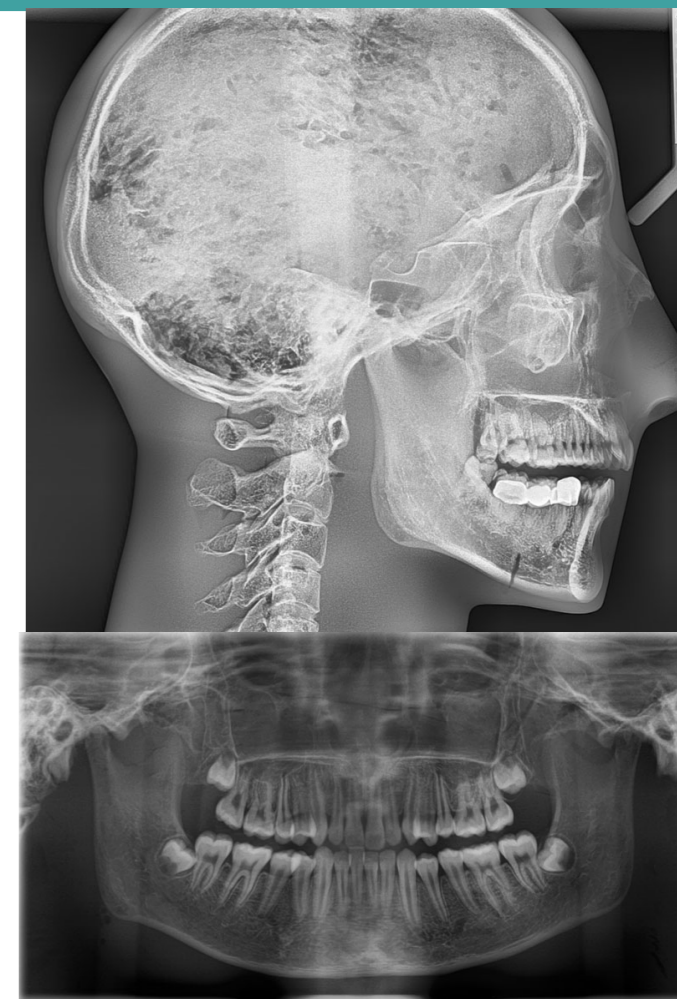
Key features of the EZ Full body x-ray manikin

- Soft body contains a real skeleton
- Perfect for training of positioning and alignment techniques
- Robust and flexible
- High details - even the smallest guiding structures are visible
- Anatomical correct joints spaces and life-like articulation techniques
- Offers evaluation of trainings in a realistic environment



Real Human Bones

Sectional Phantoms



Key features of the EZ sectional x-ray phantoms

- Real bones embedded in clear material
- Produce no image artifacts
- Fully compatible with all devices
- All body sections are available as transparent or opaque version
- Evaluation of performance of trainees or medical devices

