



CATALOGUE

2022

www.trucorp.com

Celebrating **20 YEARS** *of excellence*

TruCorp have over 20 years experience within the medical simulation market. We are committed to the development of anatomically correct products to deliver medical best practice.

TruCorp have designed, engineered and produced a wide variety of training manikins for airway management, trauma training, ultrasound, pediatric procedural skills and a portfolio of simulation apps with the aim of continuing to improve educational efficiency and ultimately save more lives.



contents

01

Child Airway Management

02

Adult Airway Management

03

Trauma Task Trainers

04

Ultrasound Task Trainers

TRUCORP PRODUCT RANGE

ADULT



AIRSIM



AIRSIM BRONCHI



AIRSIM ADVANCE X



AIRSIM ADVANCE BRONCHI X



AIRSIM COMBO X



AIRSIM COMBO BRONCHI X



TRU CRIC

TRAUMA



TRUMAN TRAUMA



TRU TORNQUET

PEDIATRIC



AIRSIM BABY X



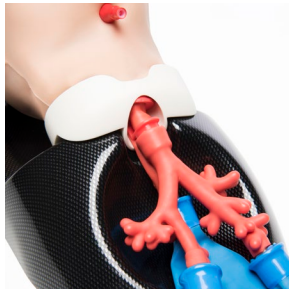
PIERRE ROBIN X



TRUBABY X



CHILD X



CHILD BRONCHI X



CHILD COMBO X



CHILD COMBO
BRONCHI X



TRU INFANT IO LEG

ULTRASOUND



TRU NERVE BLOCK



TRU PICC



TRU IV BLOCK

PEDIATRIC AIRWAY MANAGEMENT





01

AIRSIM CHILD X RANGE

AIRSIM CHILD X



The AirSim® Child X provides realistic feedback during airway management procedures including bag-valve-mask ventilation, supraglottic device insertion and both naso and orotracheal intubation. TruCorp's AirSim Child X is the most realistic and durable pediatric airway trainer on the market, designed for lifelike responsiveness and to withstand repeated use in a busy classroom setting. It's also ideal as an airway demonstration model for device manufacturers and educators.

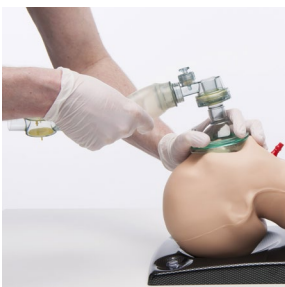
AIRSIM CHILD BRONCHI X



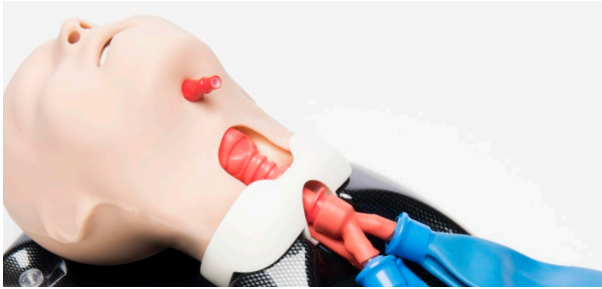
Our pediatric bronchoscopy training model provides doctors, clinical specialists and emergency responders an efficient way to practice pediatric airway management skills and diagnostic bronchoscopy techniques on an anatomically correct manikin based on a six-year-old child. Suitable for training in laryngoscopy, bronchoscopy, intubation, lung isolation and lung suctioning techniques. Features the AirSim® X airway with 5-year warranty.

FEATURES

	AIRSIM CHILD X	AIRSIM CHILD BRONCHI X	AIRSIM CHILD COMBO X	AIRSIM CHILD COMBO BRONCHI X
AirSim pediatric airway	✓	✓	✓	✓
5 year Airsim X Airway warranty	✓	✓	✓	✓
Realistic feedback during airway management procedures	✓	✓	✓	✓
Replaceable lung bags inflate with successful ventilation	✓	✓	✓	✓
Esophagus & replaceable bag representing stomach	✓	✓	✓	✓
Lifelike external and internal anatomical features	✓	✓	✓	✓
Inflatable tongue bulb to simulate tongue edema	✓	✓	✓	✓
Missing front teeth to resemble natural dentals	✓	✓	✓	✓
'Real feel' skin covering for added realism	✓	✓	✓	✓
Bronchi accurate down to the fourth generation		✓		✓
Wraparound replaceable neck skin rotates for 10-15 incisions			✓	✓
Sternal notch, tracheal rings, cricoid and laryngeal cartilages			✓	✓



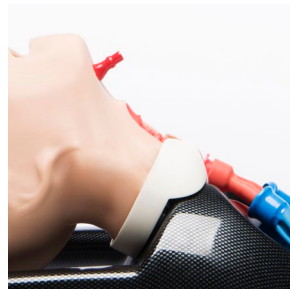
AIRSIM CHILD COMBO X



True-to-life training in pediatric airway management and cricothyroidotomy. This model is ideal for training in intubation, needle & surgical cricothyroidotomy, percutaneous tracheostomy and direct & video laryngoscopy. Includes the uniquely constructed AirSim® airway enhanced with palpable cricoid landmarks, laryngeal cartilages and tracheal rings, backed by a 5-year warranty.

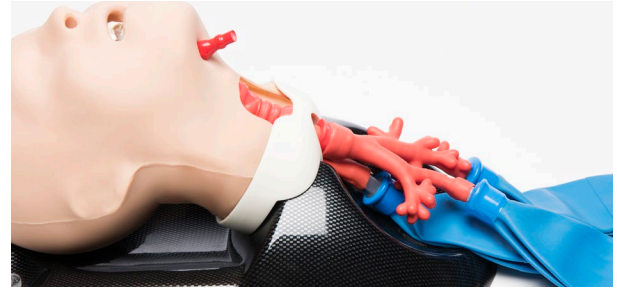


AIRSIM CHILD COMBO X



AIRSIM CHILD COMBO X

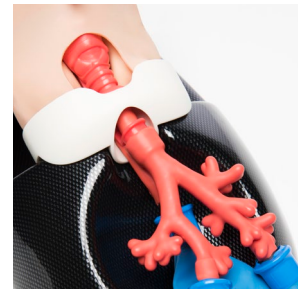
AIRSIM CHILD COMBO BRONCHI X



Our pediatric airway, bronchoscopy and cricothyroidotomy trainer features the uniquely constructed AirSim® X airway with 5-year warranty enhanced with palpable cricoid landmarks, laryngeal cartilages and tracheal rings. This versatile pediatric intubation manikin is based on a 6-year-old child and ideal for practicing percutaneous tracheostomy, ventilation, bronchoscopy and needle & surgical cricothyroidotomy.



AIRSIM CHILD COMBO BRONCHI X



AIRSIM CHILD COMBO BRONCHI X

PROCEDURES

	AIRSIM CHILD X	AIRSIM CHILD BRONCHI X	AIRSIM CHILD COMBO X	AIRSIM CHILD COMBO BRONCHI X
Endotracheal/Nasotracheal intubation	✓	✓	✓	✓
Nasogastric (NG) tube insertion	✓	✓	✓	✓
Full range of supraglottic device insertion	✓	✓	✓	✓
Bag-valve mask (BVM) ventilation techniques	✓	✓	✓	✓
Direct and video laryngoscopy	✓	✓	✓	✓
Combi tube insertion			✓	✓
Awake fiber optic examination			✓	✓
Diagnostic bronchoscopy		✓		✓
Lung isolation & suctioning techniques		✓		✓
Needle and surgical cricothyroidotomy			✓	✓
Percutaneous tracheostomy			✓	✓

AIRSIM BABY RANGE

AIRSIM BABY X



AirSim Baby X is the most anatomically correct pediatric airway trainer for teaching and training infant airway management. Features accurate internal and external anatomical details based on a CT-DICOM data from a 5-month-old infant. Medical professionals get efficient, realistic practice in pediatric intubation, laryngoscopy, ventilation and supraglottic device insertion.

FEATURES

- AirSim Baby Airway with a 5-year warranty is certified to practice 20,000 intubation cycles without fail
- Replaceable lung bags provide realistic feedback during technique training
- User feedback through the visualization of stomach inflation & lung expansion
- True to life external & internal anatomical features allow for easy demonstration of all pediatric video laryngoscopes
- Realistic skin covering with lifelike texture
- Modular design allowing for all parts to be changed within your organization

PROCEDURES

- Double nasotracheal intubation
- Endotracheal tube insertion
- Bag-valve mask (BVM) ventilation techniques
- Laryngeal Mask Airway (LMA)
- Full range of supraglottic device insertion
- Direct and video laryngoscopy

AIRSIM PIERRE ROBIN X



FEATURES

- Accurate representation of a pediatric patient with Pierre Robin Sequence
- Anatomically correct details for true to life medical procedure training
- Ideal for practicing airway obstruction management techniques
- Provides realistic feedback during airway management & laryngoscopy practice
- 'Real feel' skin covering for added realism
- Anatomically correct AirSim® X airway with 5-year warranty certified for over 20,000 intubation cycles

AirSim Pierre Robin X was developed in collaboration with clinicians from Children's Hospital Los Angeles. This realistic training manikin highlights difficult airway management techniques for infants with Pierre Robin Sequence/Syndrome (PRS). AirSim® X airway with 5-year warranty certified for over 20,000 intubation cycles.

PROCEDURES

- Double nasotracheal intubation
- Endotracheal tube insertion
- Bag-valve mask (BVM) ventilation techniques
- Full range of supraglottic device insertion
- Direct and video laryngoscopy



TRU INFANT IO LEG



The TruInfant IO Leg is a realistic task trainer for practicing the skills associated with intraosseous (IO) infusion of the tibia. This model is based on a 5-month-old infant.

Featuring realistic anatomy including the tibial tuberosity and patella, users can identify the proximal tibia intraosseous needle insertion site. Learners benefit from lifelike resistance when penetrating the medullary cavity.



FEATURES

- Realistic infant leg anatomy including tibial tuberosity & patella
- Lifelike resistance when penetrating medullary cavity
- Positive user feedback by withdrawing blood to confirm successful technique
- Ready to use! No setup required. Begin training immediately using IO inserts pre-filled with blood
- Replacement IO inserts are quick & easy to replace

PROCEDURES

- Identification of proximal tibia intraosseous needle insertion site
- IO tibia needle placement
- Aspiration of marrow blood through syringe
- Recommended equipment size: Size 18G needle

TRUBABY X



Our pediatric clinical skills training model is ideal for anesthetists, nurses & other pediatric emergency medical professionals practicing Directly Observed Practical Skills (DOPS), Pediatric Advanced Life Support (PALS) and critical emergency medicine including infant airway management and more. TruBaby X is incredibly lifelike with the appearance, weight, size and movement of a 5-month-old infant.

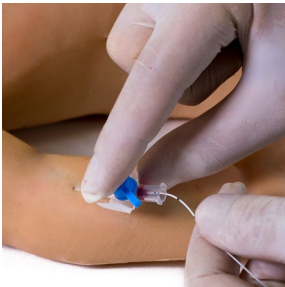
FEATURES

- Realistic & durable AirSim X airway with a 5-year warranty
- Realistic movement including head tilt, chin lift & jaw thrust
- Interchangeable head in case of repairs
- Realistic rib structures including xiphoid process & clavicle
- Palpable landmarks in the 2nd intercostal space midclavicular line & 5th intercostal space mid-axillary line
- Palpable vertebrae landmarks
- Lumbar puncture can be practiced at L3-L4 & L4-L5 spine locations
- Proximal tibia interosseous needle insertion site
- Contains tibial tuberosity anatomy & patella anatomy
- Realistic anatomy to practice inserting catheter tube to extract urine
- Option for interchangeable male and female genitalia
- Fully enclosed fluid management system giving realistic blood flashback & flow
- Allows needle cannulation at various locations in hand, arm & foot with realistic blood flashback
- Realistic look & feel of tissues
- Lifelike responsiveness during procedure training
- Set-up time is less than 5 minutes



PROCEDURES

- Airway management
- CPR
- Peripheral venous cannulation (arm, hand, foot)
- Lumbar puncture
- PICC line insertion
- Needle thoracentesis for tension pneumothorax (2nd & 5th intercostal space)
- Chest drain (air only)
- Intraosseous (IO) infusion (tibia)
- Urethral catheterization



PERIPHERAL VENOUS CANNULATION

- Manual Activation of venous blood flow allows fluids to be withdrawn and administered providing realistic blood flashback.

HAND AND ARM

- Contains the dorsal venous arch, cephalic and basilic veins allowing needle cannulation at various locations.

FOOT

- Contains the dorsal venous arch, great and lesser saphenous veins allowing needle cannulation.

LUMBAR PUNCTURE

- Ability to manoeuvre the baby into either the required lateral decubitus or upright position.
- Palpable vertebrae landmarks including the iliac crest.
- Lumbar puncture can be practised at L3-L4 and L4-L5 spine locations.
- Accurate needle placement allows for positive response and collection of simulated cerebrospinal fluid (CSF).

PICC LINE INSERTION

- Facilitates PICC line procedure including guidewire insertion, dilation, and full cannulation.
- Peripherally inserted catheterization either through the basilic, brachial or cephalic veins.
- Manual activation of venous blood flow allows fluids to be withdrawn and administered providing realistic blood flashback.

INTRAOSSUEOUS (IO) INFUSION (TIBIA)

- Features the tibial tuberosity and patella anatomy which facilitates the identification of the proximal tibia intraosseous needle insertion site.
- Realistic resistance when penetrating the medullary cavity.

NEEDLE THORACENTESIS FOR TENSION PNEUMOTHORAX

- Realistic rib structures including xiphoid process and clavicle.
- Palpable landmarks in the 2nd intercostal space mid clavicular line and the 5th intercostal space mid auxiliary line.
- Audible hiss when needle is successfully inserted.

CHEST DRAIN (AIR ONLY)

- Palpable landmarks in the 5th intercostal space mid auxiliary line.
- Facilitates either the Seldinger chest drain insertion technique the needle thoracentesis approach for the treatment of a pneumothorax.

URETHRAL CATHETERIZATION

- Realistic anatomy to practice and learn the techniques of catheterization.
- Upon successful entry fluid will flow from the catheter.
- Option for interchangeable male and female genitalia.

ADULT AIRWAY MANAGEMENT



02



AIRSIM RANGE

AIRSIM



Our AirSim® model is ideal for training in airway management and awake fibreoptic intubation. It features the uniquely constructed AirSim® airway for realistic feedback during airway management procedures. Visually and anatomically correct, the nasal cavity and airway include important internal landmarks for training in nasotracheal intubation and nasally directed fibre optic examination.

AIRSIM BRONCHI



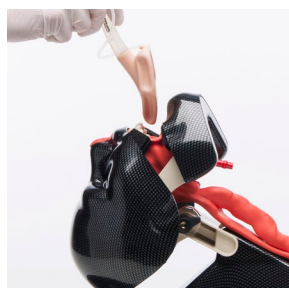
AirSim Bronchi is a durable airway management trainer for intubation and bronchoscopy. This model includes the AirSim® airway with true, anatomically correct and visually accurate internal features including bronchi down to the fourth generation. This training manikin can also be used to practice nasotracheal intubation and nasally directed fibreoptic examination.

FEATURES

	AIRSIM	AIRSIM BRONCHI
Innovative AirSim® airway and nasal cavity created from CT DICOM data	✓	✓
Anatomically correct internal features and visually accurate landmarks in airway & nasal	✓	✓
Inflatable tongue with lifelike texture can simulate edema	✓	✓
Replaceable lung bags inflate with successful ventilation	✓	✓
Esophagus and replaceable bag representing stomach	✓	✓
Optional difficult airways available for more advanced training	✓	✓
Anatomically correct internal bronchi down to the fourth generation		✓

PROCEDURES

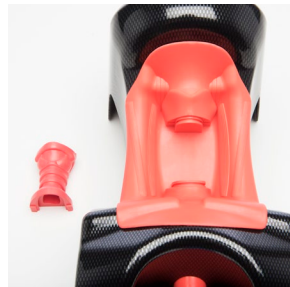
	AIRSIM	AIRSIM BRONCHI
Diagnostic bronchoscopy		✓
Single naso-tracheal intubation	✓	✓
Bag-valve mask (BVM) ventilation techniques	✓	✓
Full range of supraglottic device insertion	✓	✓
Direct laryngoscopy	✓	✓
Awake fibre optic examination	✓	✓
Endotracheal tube insertion	✓	✓
Combi tube insertion	✓	✓
Single lung isolation techniques	✓	✓



TRU CRIC



TruCric is a lightweight and durable cric trainer for efficient teaching and training in needle and surgical cricothyrotomy, percutaneous tracheostomy, air jet ventilation and the Seldinger technique.



FEATURES

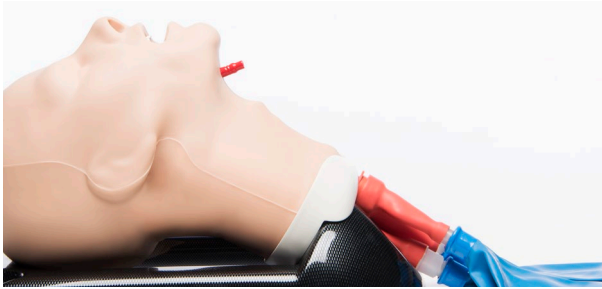
- Lightweight and durable cricothyrotomy trainer designed for efficient procedure training
- Palpable cricoid landmarks, laryngeal cartilages & tracheal rings with easy identification of the sternal notch & the clavicle bone
- Correct technique verification with replaceable lung bag
- Neck skin can be rotated on the model allowing 10-15 incisions
- Larynx insert allows 1 surgical cricothyroidotomy & 2-3 tracheostomy procedures
- All consumables are quick & easy to interchange, perfect for a busy teaching environment

PROCEDURES

- Needle & surgical cricothyrotomy
- Air jet ventilation
- Percutaneous tracheostomy
- Seldinger technique
- FONA airway management

AIRSIM X RANGE

AIRSIM ADVANCE X

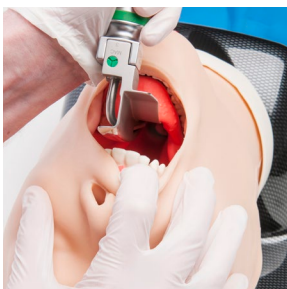


AirSim Advance X features the uniquely constructed AirSim® X airway and an anatomically correct nasal passage for visual accuracy and realistic feedback during airway management procedure practice. Durable and true-to-life airway is certified for over 20,000 intubation cycles and has a 5-year warranty. Silicone simulated skin covering offers a lifelike feel and more precise articulation during bag-valve mask ventilation training.

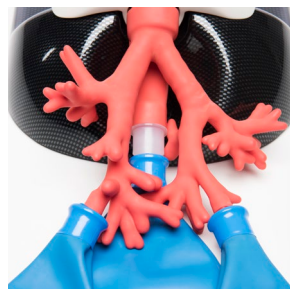
AIRSIM ADVANCE BRONCHI X



The AirSim Advance Bronchi X is ideal for training in lung isolation and suctioning techniques including bronchial blocker insertion, single and double endobronchial tubes and specialized stints. This versatile intubation head and airway suction trainer can also be used for practicing direct and video laryngoscopy and ventilation techniques.



AIRSIM ADVANCE X



AIRSIM ADVANCE BRONCHI X

AIRSIM COMBO X



Adult intubation head and cricothyrotomy trainer featuring the uniquely constructed AirSim® X airway with 5-year warranty enhanced with palpable cricoid landmarks, laryngeal cartilages and tracheal rings. Ideal for teaching & training intubation, BVM & all supraglottic devices plus needle and surgical cricothyroidotomy, percutaneous tracheostomy & laryngoscopy.

AIRSIM COMBO BRONCHI X



TruCorp AirSim Combo Bronchi X features the AirSim® X airway with palpable cricoid landmarks, laryngeal cartilages and tracheal rings. Perfect for practicing intubation, ventilation, percutaneous tracheostomy, needle and surgical cricothyroidotomy plus diagnostic bronchoscopy techniques including lung suctioning & isolation. Replacement parts interchange easily for efficient training.



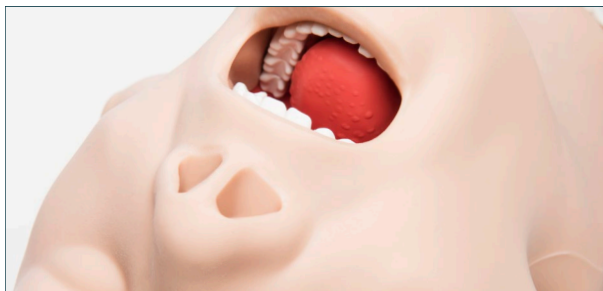
AIRSIM COMBO X



AIRSIM COMBO BRONCHI X

FEATURES

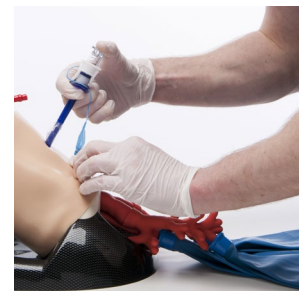
	AIRSIM ADVANCE X	AIRSIM ADVANCE BRONCHI X	AIRSIM COMBO X	AIRSIM COMBO BRONCHI X
AirSim® Airway designed using CT DICOM data	✓	✓	✓	✓
5 year Airsim X Airway warranty	✓	✓	✓	✓
Silicone skin covering with lifelike texture	✓	✓	✓	✓
Anatomically correct internals & visually accurate landmarks	✓	✓	✓	✓
Inflatable tongue bulb to simulate edema	✓	✓	✓	✓
Replaceable lung bags inflate with successful ventilation	✓	✓	✓	✓
Esophagus & replaceable bag representing stomach	✓	✓	✓	✓
Optional difficult airways available for advanced training	✓	✓	✓	✓
Wraparound replaceable neck skin rotates for 10-15 incisions			✓	✓
Sternal notch, tracheal rings, cricoid and laryngeal cartilages			✓	✓
Fourth generation bronchi		✓		✓



AIRSIM ADVANCE X



AIRSIM COMBO X



AIRSIM COMBO BRONCHI X

PROCEDURES

	AIRSIM ADVANCE X	AIRSIM ADVANCE BRONCHI X	AIRSIM COMBO X	AIRSIM COMBO BRONCHI X
Endotracheal/Nasotracheal intubation	✓	✓	✓	✓
Nasogastric (NG) tube insertion	✓	✓	✓	✓
Bag-valve mask (BVM) ventilation techniques	✓	✓	✓	✓
Full range of supraglottic device insertion	✓	✓	✓	✓
Combi tube insertion	✓	✓	✓	✓
Direct and video laryngoscopy	✓	✓	✓	✓
Awake fibre optic examination	✓	✓	✓	✓
Diagnostic bronchoscopy		✓		✓
Lung isolation & suctioning techniques		✓		✓
Needle and surgical cricothyroidotomy			✓	✓
Percutaneous tracheostomy			✓	✓



TRAUMA TASK TRAINERS



03

TRAUMA RANGE

TRUMAN TRAUMA X



Lifelike training in advanced airway management skills, CPR and emergency surgical procedures for life threatening trauma situations. Anatomically correct simulated human torso and AirSim X airway facilitate training in percutaneous tracheostomy, needle & surgical cricothyroidotomy, chest tube insertion, needle decompression of tension pneumothorax and more.



FEATURES

- Realistic & durable AirSim X Airway and nasal passage with 5-year warranty
- Realistic larynx with palpable cricoid landmarks, laryngeal cartilages & tracheal rings
- Audible hiss when needle is successfully inserted into 2nd & 5th intercostal spaces
- Easy identification of all anatomical landmarks for CPR, full head tilt with chin lift & jaw thrust, lifelike recoil during compressions
- Cost-effective & easily replaceable consumables: neck skin, larynx inserts, needle decompression inserts & chest drain inserts
- Tongue bulb can be inflated to create tongue edema providing a variance during training
- User feedback through visible chest rise
- Innovative design requires minimal maintenance & allows for easy product repairs



PROCEDURES

- Chest tube insertion including surgical incision, blunt dissection, pleural perforation, fluid simulation & finger sweep
- Needle decompression of tension pneumothorax (2nd & 5th intercostal space)
- FONA airway management training including needle and surgical cricothyroidotomy
- Percutaneous tracheostomy
- Cardiopulmonary resuscitation (CPR)
- Full use of supraglottic devices
- Endotracheal intubation with direct laryngoscopy
- Combitube insertion
- Nasogastric tube insertion
- Bag valve mask ventilation (BVM)
- Single lung isolation techniques



TRU TOURNIQUET

The TruTourniquet has been designed to practise massive haemorrhage control associated with traumatic amputation e.g. blast injury. The model is based on a right thigh and provides realistic bleeding control with visual feedback on user performance.



FEATURES

- It's realistic! Weight, size and movement of leg involved in a traumatic amputation, featuring one bleeding point and a fractured femur.
- It's durable! Tested for over 40,000 tourniquet applications without fail.
- Users can simulate a massive haemorrhage when the product is connected to the pressurized blood supply.
- The model provides visual feedback when the correct tourniquet force has been applied.
- Initial set-up time is less than 10 mins.
- The unique blood recycling system allows easy and quick set-up, providing continuous use with no downtime (consists of a blood storage base which circulates the blood back to the stump).
- Ability to detach stump from the base to use in a non-classroom environment.
- The splash shield helps avoid blood overflow and keeps mess to a minimum. It can be easily attached/detached as required.

ULTRASOUND TASK TRAINERS



04



TRU ULTRA RANGE

TRU NERVE BLOCK



This innovative 3-in-1 ultrasound model provides hands-on training in:

- Ultrasound-guided nerve blocks with ability to verify needle tip location
- Ultrasound IV insertion with embedded vessels & realistic blood flashback
- Ultrasound bone imaging featuring a fractured bone structure

Trainee anesthetists develop, practice and maintain the skills necessary to use ultrasound for guiding regional anesthesia and vascular access procedures. Simulated anaesthetic fluid can be injected around the nerve.

FEATURES

- Contains epidermal layer, two simulated vessels (4mm), a nerve bundle (with surrounding artery and vein), a fractured bone & fascia layers
- Nerve bundle allows fluid entry & withdrawal for anaesthesia fluid administration
- Positive fluid flow when vessels are accurately accessed
- Constant blood flow for realistic flashback
- Color Doppler flow imaging
- 1000+ needle incisions with self-healing/regeneration of the TruUltra material
- Needle tracks disappear with very minimal damage to material
- Longitudinal and transverse anatomical viewing options
- Realistic needle tip identification and artefact
- Use with any ultrasound imaging system with appropriate transducer probe (recommend high-frequency linear array transducer 5-12 mhz)

TRU IV BLOCK



Part of the TruUltra product range, the TruIV Block allows learners to gain proficiency in the skills associated with IV cannulation. Featuring 8 veins (superficial and deep) ranging from 4-8mm in diameter, users can practise the use of ultrasound during IV procedures.

PROCEDURES

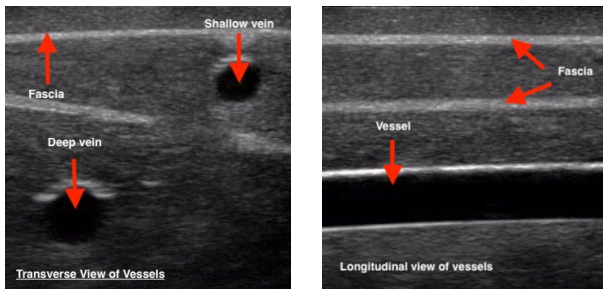
- Ultrasound-guided IV cannulation
- Probe positioning & movement
- Recognition of veins in soft responsive tissue

FEATURES

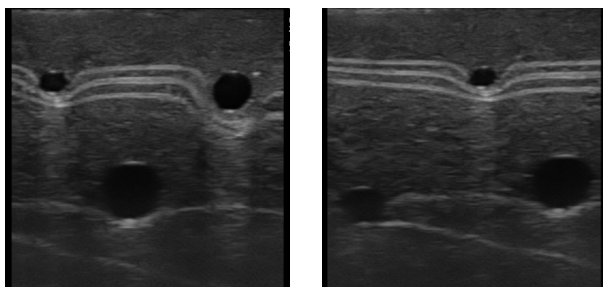
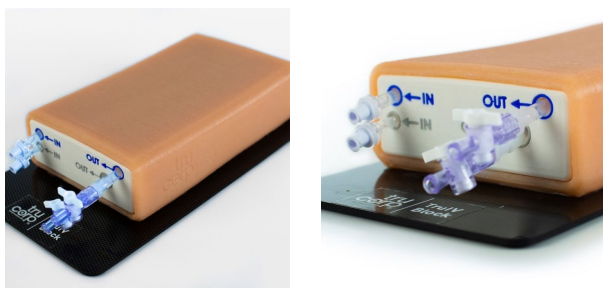
- **Realistic features:** Features 8 veins (4 superficial and 4 deep) plus fascia layers for enhanced realism
- **Lifelike training:** Target various veins ranging from 4mm to 8mm in diameter. Ultrasound imaging is incredibly lifelike
- **Positive user feedback:** Confirm successful IV cannulation procedures by withdrawing blood
- **Easy to set up:** Ready to begin training in under 5 minutes
- **Durable:** Unique, self-regenerating TruUltra materials diminish the appearance of needle tracks to facilitate a high volume of repeated practice. The insert will facilitate approx. 4000 needle penetrations before a replacement insert is required
- **Interchangeable:** Replacement insert is cost-effective and easy to replace with no disruption to teaching time
- **Easily transportable:** Delivered in a compact, protective carrier case - perfect for training in different locations

PROCEDURES

- Ultrasound-guided regional anesthesia
- Ultrasound-guided vascular access
- IV cannulation (venipuncture and vein cannulation)
- Injection of simulated anaesthetics with visual air & fluid retention possible
- Injection of fluid around the nerve
- Identification of arterial and venous blood flow
- Fractured bone identification
- Ultrasound education & machine demonstrations (ideal for ultrasound manufacturers)



- **Versatile:** Longitudinal and transverse anatomical viewing options
- **Universal:** Compatible with all ultrasound machine brands



TRU PICC



TruPICC is an adult male training arm designed for effective training in peripherally inserted central catheters and IV insertion.

This ultrasound-guided PICC line and IV placement training model develop the user's skills associated with needle placement, guidewires and catheters using ultrasound. It's also ideal for ultrasound manufacturers for education & demonstrations.

The upper arm anatomy features correct and realistic vascular anatomy, lifelike feel and responsiveness and our unique self-healing TruUltra material.

FEATURES

PICC LINE

- Full catheter PICC line placement and Seldinger techniques can be practiced with a recommended 4F catheter
- Features vascular anatomy of an entire arm including the brachial artery, brachial, cephalic basilic and median cubital vein
- Ability to use ultrasound on the upper chest which contains the superior vena cava designed to allow users to verify correct catheter placement
- Option to switch on/off flow to either the cephalic or basilic veins to prolong the life of the insert
- Fluid can be injected into the model to verify needle tip location. When vessels are accessed fluids can be withdrawn and administered

IV ARM

- Realistic visualisation of the median cubital, brachial and basilic veins
- Differentiation between the basilic vein and the brachial artery
- Verify correct needle placement by the withdrawal of fluids
- Real feel vascular 'tenting' upon entry into the vessel

BEFORE YOU GO

DARK SKIN TONES

A selection of our models are available in dark skin tones to help simulate the diversity of real patients.

Dark skin tones are available on the following models:

Complete AirSim X range of airway training manikins
TruMan Trauma X
TruBaby X
TruCric
TruInfant IO Leg
TruTourniquet

To purchase a dark skin tone, please add 'DS' to the end of the product code, for example an AirSim Advance X with dark skin tone would be 'AA91100XDS'.

WARRANTY

TruCorp products are carefully designed and produced at our UK HQ.

We offer a 1 year warranty on all products and an additional 5-year warranty (up to five years of protection and cover) on TruCorp branded airways on any AirSim X and Trauma X range. This applies to all products which have been used appropriately as noted in the product user guide.

More details: <https://www.trucorp.com/AirSimAirway/Warranty>

DELIVERY

Our standard delivery time is 3-4 weeks from receipt of purchase order, however we will endeavour to deliver sooner if possible.

trucorp

CONTACT US

Our product specialists are always happy to assist with pricing, information and orders

info@trucorp.com

+44 (0) 28 3888 2714

www.trucorp.com

Celebrating
20 YEARS
of excellence

 **trucorp**