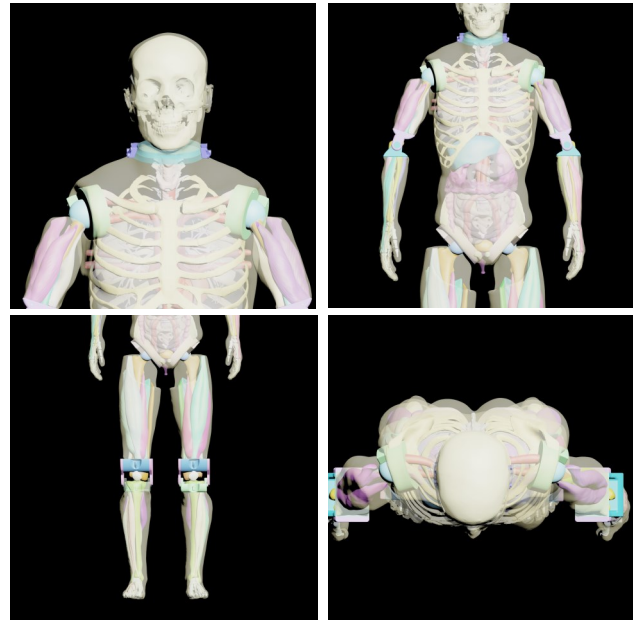


## Adult Full Body (with Muscles) for X-Ray CT, US



FB-A04

\$39,400.00



### Description:

The Adult Full Body Phantom with Muscles is an X-Ray CT and US-compatible training product. Above other functionality listed below, this phantom was specifically enhanced to mimic the major muscle structure of arms and legs. The primary application of this phantom is to train and demonstrate various patient positioning techniques in radiology. This phantom can be ordered in a translucent or skin-colored version.

### Anatomy:

- ✓ Rotatable Shoulders
- ✓ Movable Hip, Knee, and Elbow Joints
- ✓ Adult Full Body (10 Parts)
  - Skull
  - Brain (with tissue)
  - Grey and White Matter
  - Air Cavities
  - Frontal Sinus with Air Gaps
  - Alignment Markings
  - Spine
  - Ribcage
  - Shoulders and Clavicles
  - Pelvis
  - Trachea
  - Heart
  - Lungs
  - Diaphragm
  - Liver
  - Gallbladder
  - Stomach
  - Kidneys
  - Spleen
  - Pancreas
  - Large and Small Intestines
  - Bladder
  - Prostate
  - Major Arm Muscles
  - Humerus
  - Elbow Joints
  - Radius and Ulna
  - Wrist with Fingers
  - Major Leg Muscles
  - Femur
  - Knee Joints
  - Tibia
  - Fibula
  - Foot with Toes

### Size & Weight:

- ✓ Size: 69 Inches, Weight: 154.4 Lbs (approx.).
- ✓ Size: 47 x 26 x 18 Inches, Weight: 198.5 Lbs (approx.)

For more information about this product, please refer to our website.

[Learn More](#)