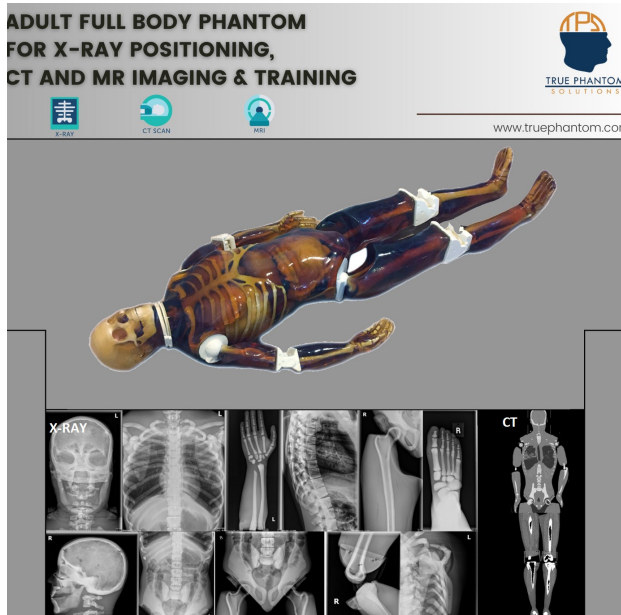
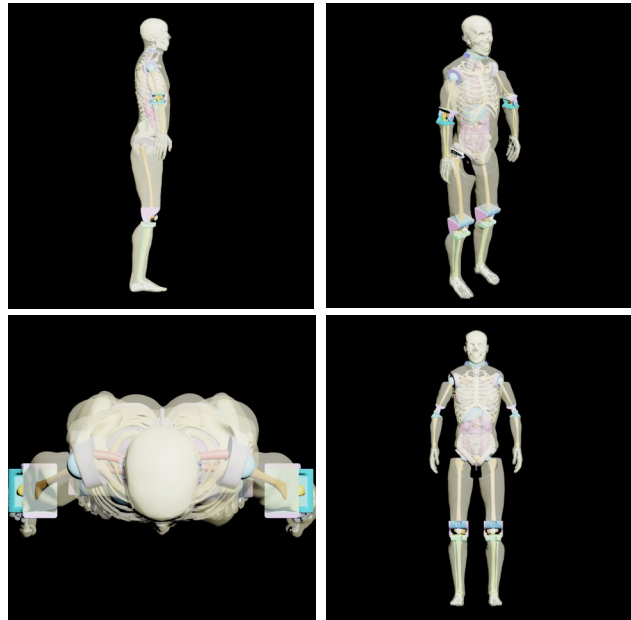


Adult Full Body for X-Ray CT, US



FB-A03

\$36,400.00



Description:

This Adult Full Body Phantom is an X-Ray/CT and US-compatible training product. The primary application of this phantom is to train and demonstrate various patient positioning techniques in radiology. Other uses include hands-on experience with diagnostic imaging techniques and visual evaluation to find optimal scanning conditions. This phantom can be ordered in a translucent or skin-colored version.

Anatomy:

- | | | |
|---------------------------------------|------------------------------|----------------------|
| ✓ Rotatable Shoulders | – Pelvis | – Bladder |
| ✓ Movable Hip, Knee, and Elbow Joints | – Trachea | – Prostate |
| ✓ Adult Full Body (10 Parts) | – Heart | – Humerus |
| – Skull | – Lungs | – Elbow Joints |
| – Brain (with tissue) | – Diaphragm | – Radius and Ulna |
| – Grey and White Matter | – Liver | – Wrist with Fingers |
| – Air Cavities | – Gallbladder | – Femur |
| – Frontal Sinus with Air Gaps | – Stomach | – Knee Joints |
| – Alignment Markings | – Kidneys | – Tibia |
| – Spine | – Spleen | – Fibula |
| – Ribcage | – Pancreas | – Foot with Toes |
| – Shoulders and Clavicles | – Large and Small Intestines | |

Size & Weight:

- ✓ Size: 69 Inches, Weight: 154.4 Lbs (approx.).
- ✓ Size: 47 x 26 x 18 Inches, Weight: 198.5 Lbs (approx.)

For more information about this product, please refer to our website.

[Learn More](#)