



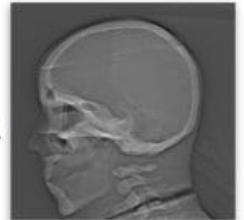
Adult Full Human Body Phantom for X-Ray CT & MRI Training

Adult Human Full Body Phantom, SKU: FB-A01, is an X-RAY CT & MRI compatible training phantom. It is used by medical schools & teaching hospitals to train their students & medical professionals several educational applications as well as visual evaluations in finding out optimal scanning conditions.



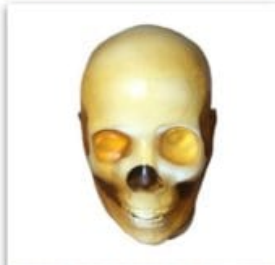
The Phantom consists of the following features:

- Anatomically correct full-body divided into ten parts.
- Realistic body tissue-mimicking material, compatible with CT & MR imaging.
- An ideal tool to train/perform several patient positioning techniques under radiology.
- Shoulders can be rotated 360 degrees round ways and 180 degrees sideways.
- Movable hip joints, knees, and elbows at respective degrees.
- Detachable head, torso & limbs.
- Bones have a realistic three-layered structure with inner porosity, which can be adjusted according to the requirement of any project.
- Customizable with different pathologies & abnormalities upon request.
- The phantom can be ordered in a transparent or skin-colored version.



BMI: 22 kg/m²
Weight: 65 kg
Height: 173 cm

The Phantom consists of the following parts:



Adult Human Head for X-RAY CT and MRI training SKU: HD-A05 – 1 Unit



Adult Human Torso for X-RAY CT and MRI training SKU: TO-C01 – 1 Unit



Adult Human Arms for X-RAY CT and MRI training SKU: AR-A01 – 2 Units



Adult Human Legs for X-RAY CT and MRI training SKU: LG-A01 – 2 Units