

## UNIFORM ABDOMEN PHANTOM LC SPHERES

Age  
Category

Adult

Body  
Region

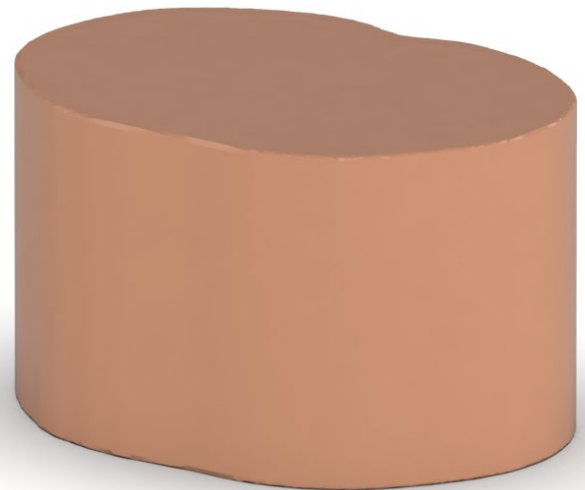
Abdomen

Target  
Modality

CT

Diagnostic  
Features

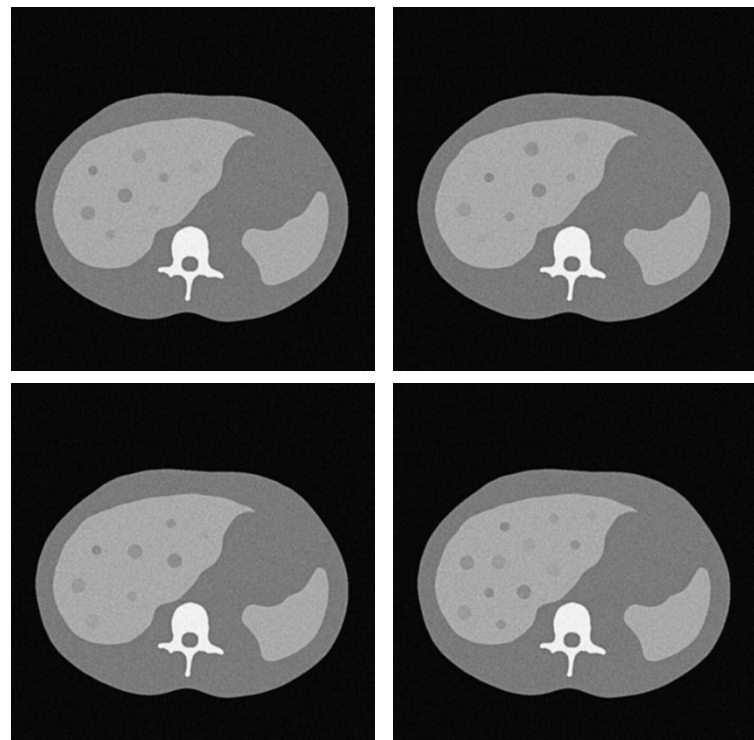
Low-contrast  
liver lesions



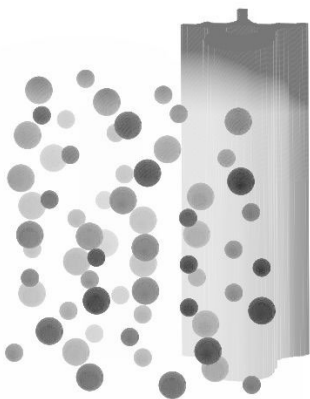
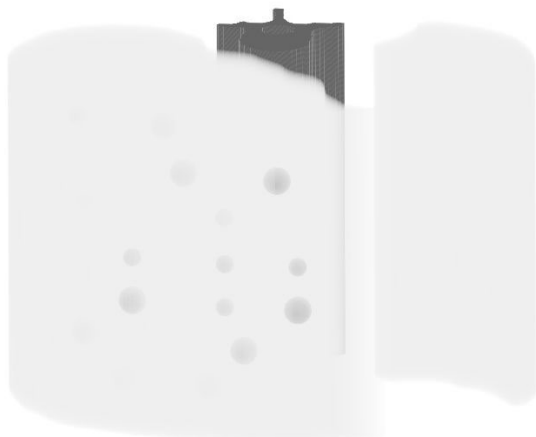
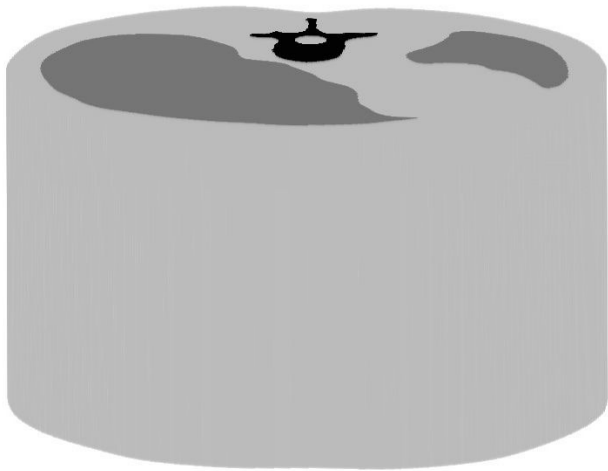
This phantom is a semianthropomorphic phantom representing the abdomen including the liver, spleen and the spine. Organ contours do not change throughout the entire phantom.

The phantom has 64 spherical lesions in the liver with 8 and 12 mm diameter and lesion contrasts of 10, 20, 30 and 40 HU to the surrounding liver.

The phantom can be used in CT (including CBCT) to assess the detectability of spherical low-contrast lesions in a uniform liver background.



# UNIFORM ABDOMEN PHANTOM LC SPHERES



## Specifications

Size	Approx. 268 x 189 x 150 mm
Weight	Approx. 4950 g
Base material	Cellulose-polymer composite
Optimal tube voltage	120 kVp (cf page 6) - adaptable upon request -

## Diagnostic features

64 spherical liver lesions in 7 sections.

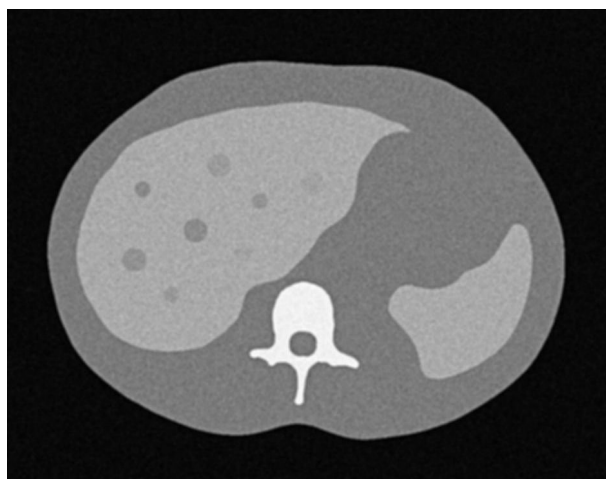
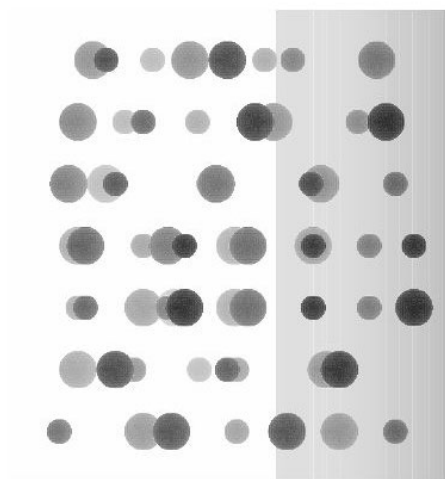
Lesion diameter: 8 mm and 12 mm  
Lesions contrasts: 10, 20, 30 and 40 HU at 120 kVp

- Section 1: 8 lesions
- Section 2: 8 lesions
- Section 3: 8 lesions
- Section 4: 12 lesions
- Section 5: 12 lesions
- Section 6: 8 lesions
- Section 7: 8 lesions

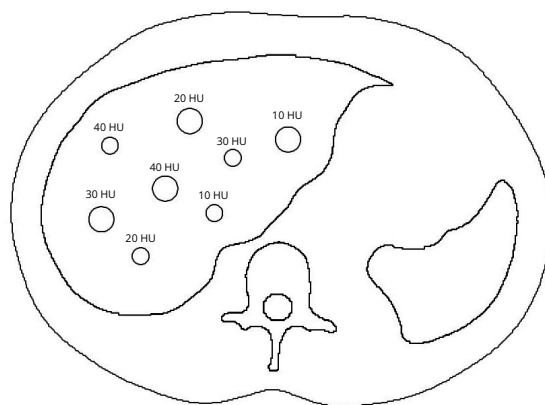
For more information visit  
[www.phantomx.de](http://www.phantomx.de)

# UNIFORM ABDOMEN PHANTOM LC SPHERES

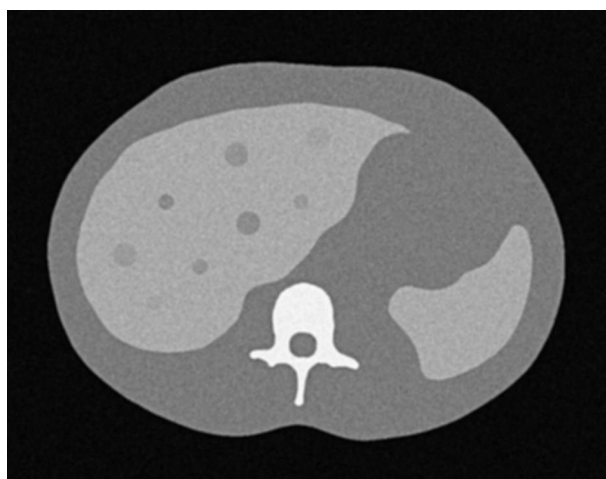
- Section 1 \_\_\_\_\_
- Section 2 \_\_\_\_\_
- Section 3 \_\_\_\_\_
- Section 4 \_\_\_\_\_
- Section 5 \_\_\_\_\_
- Section 6 \_\_\_\_\_
- Section 7 \_\_\_\_\_



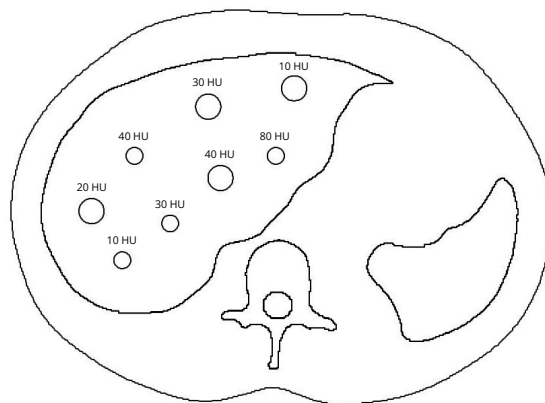
Exemplary image of section 1



Drawing indicates lesion contrast to surrounding liver. Larger lesions have 12 mm diameter, smaller lesions have 8 mm diameter.

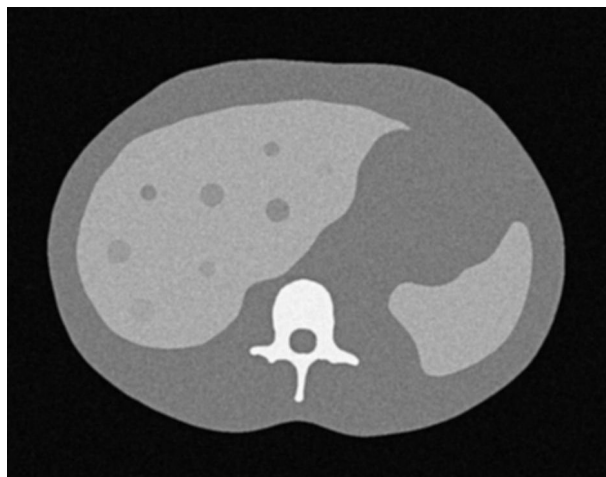


Exemplary image of section 2

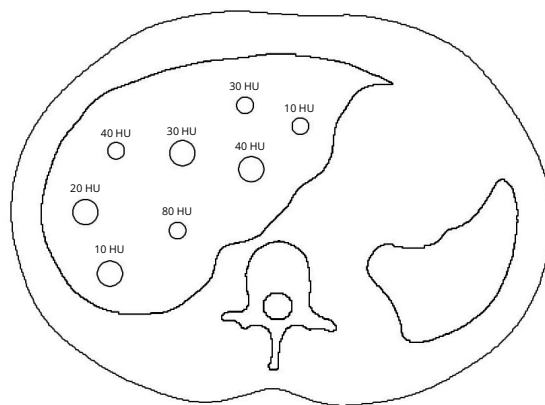


Drawing indicates lesion contrast to surrounding liver. Larger lesions have 12 mm diameter, smaller lesions have 8 mm diameter.

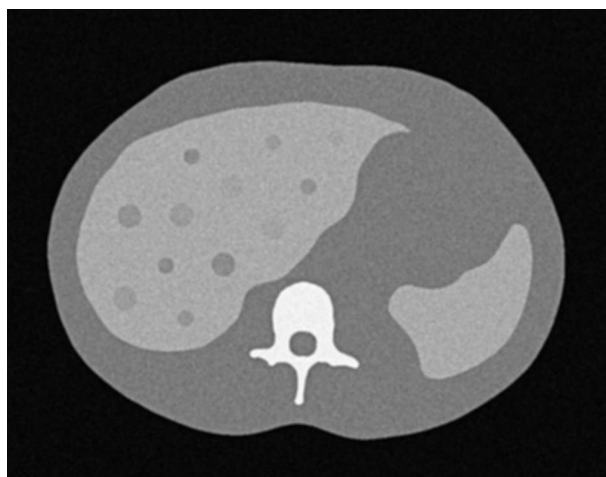
# UNIFORM ABDOMEN PHANTOM LC SPHERES



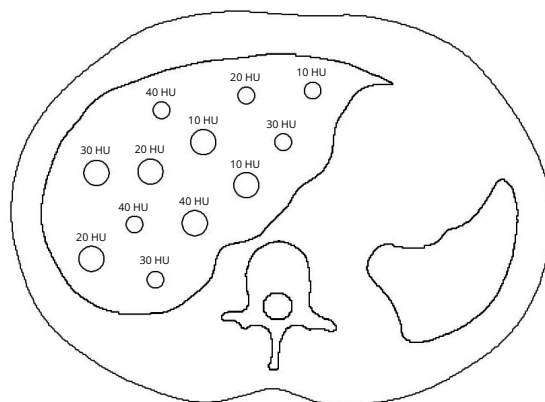
Exemplary image of section 3



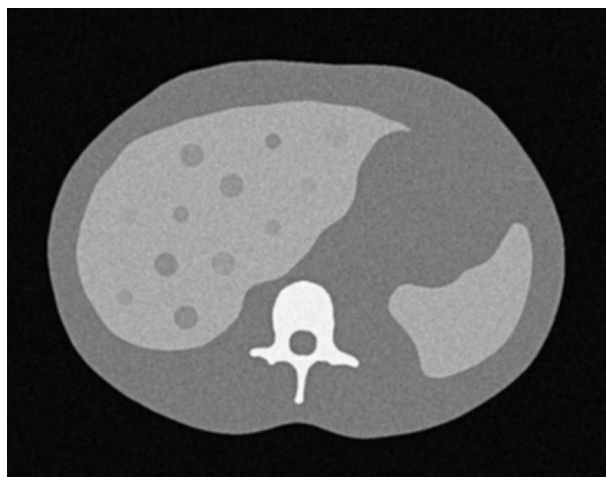
Drawing indicates lesion contrast to surrounding liver. Larger lesions have 12 mm diameter, smaller lesions have 8 mm diameter.



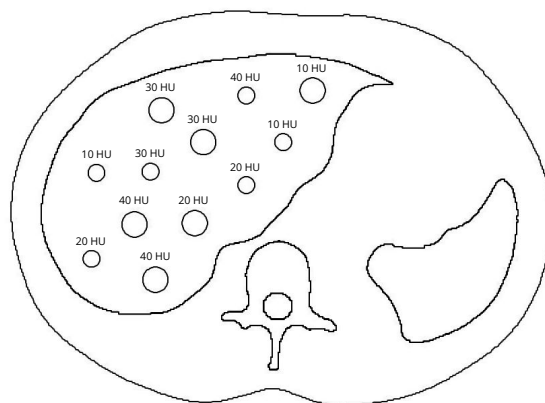
Exemplary image of section 4



Drawing indicates lesion contrast to surrounding liver. Larger lesions have 12 mm diameter, smaller lesions have 8 mm diameter.

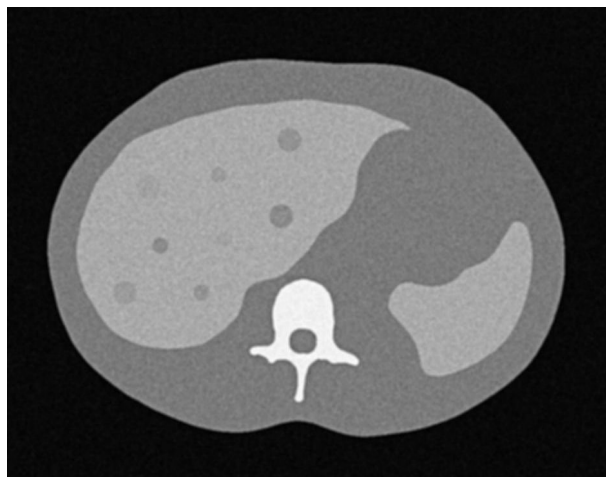


Exemplary image of section 5

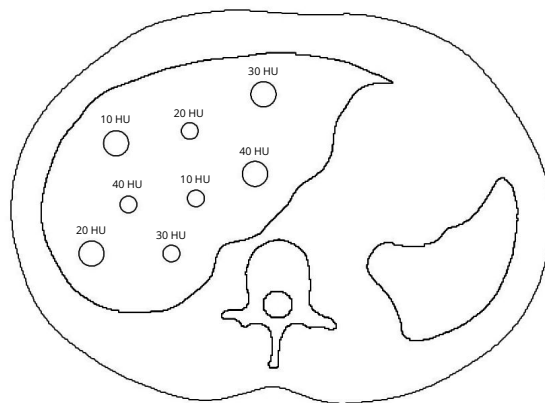


Drawing indicates lesion contrast to surrounding liver. Larger lesions have 12 mm diameter, smaller lesions have 8 mm diameter.

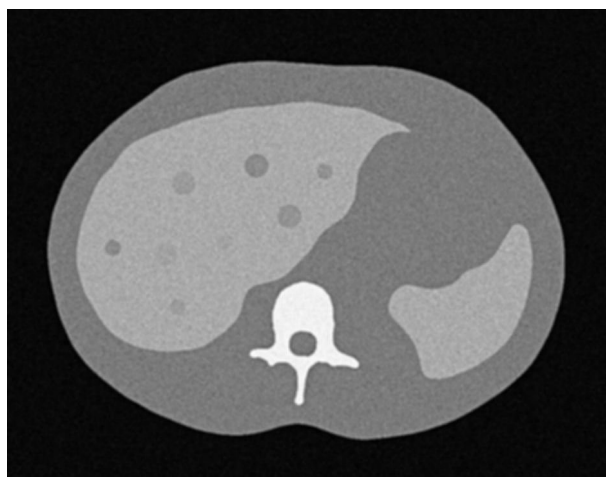
## UNIFORM ABDOMEN PHANTOM LC SPHERES



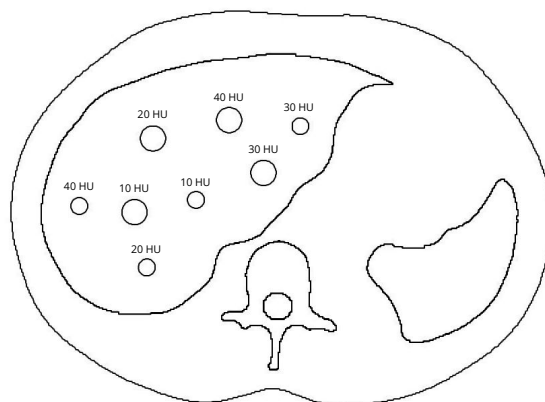
Exemplary image of section 6



Drawing indicates lesion contrast to surrounding liver. Larger lesions have 12 mm diameter, smaller lesions have 8 mm diameter.



Exemplary image of section 7



Drawing indicates lesion contrast to surrounding liver. Larger lesions have 12 mm diameter, smaller lesions have 8 mm diameter.

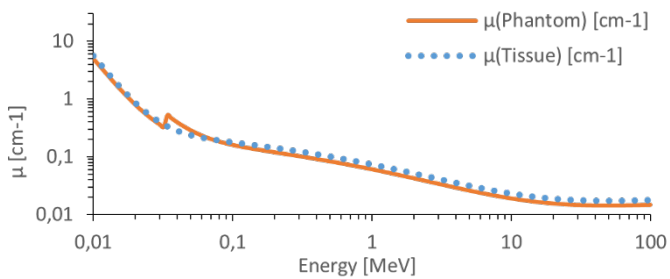


# UNIFORM ABDOMEN PHANTOM LC SPHERES

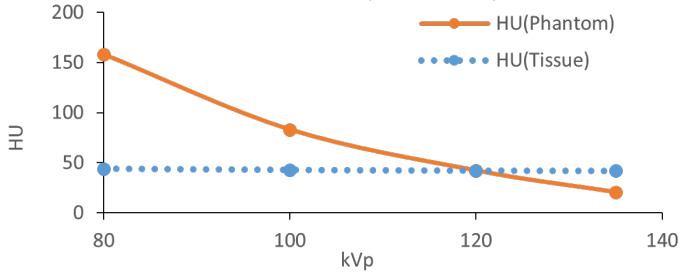
## Attenuation properties

### Soft Tissue

Linear attenuation coefficients [ $\text{cm}^{-1}$ ] (calculated)

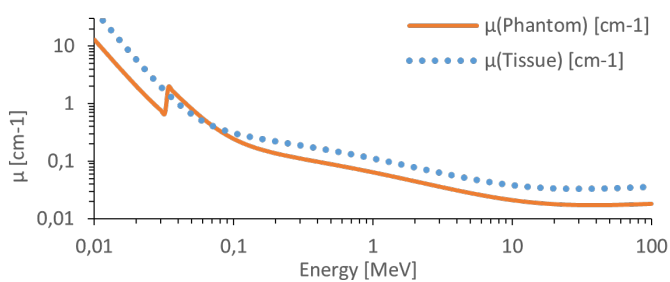


Hounsfield units (calculated)

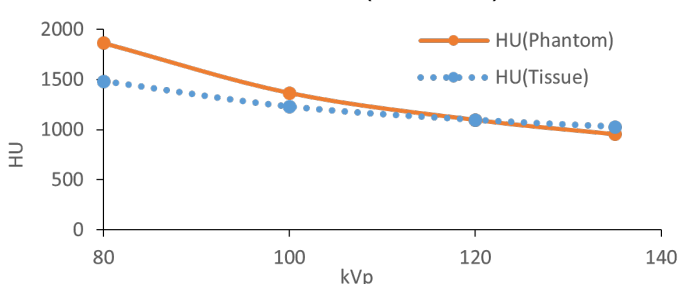


### Bone Tissue

Linear attenuation coefficients [ $\text{cm}^{-1}$ ] (calculated)



Hounsfield units (calculated)



Tissue Reference: Woodard HQ, White DR. The composition of body tissues. Br J Radiol. 1986.

## General indications

- The phantom is made of a cellulose-polymer composite material with properties similar to hardwood. If handled carefully, it will last a long time.
- The phantom is coated with a protective layer. If the protective layer is undamaged, the phantom can be cleaned using a damp cloth (water or mild detergent).
- Protect from direct sunlight.
- Maintain a storage temperature of 10 °C to 30 °C. If the phantom is exposed to temperatures below -10 °C or above 45 °C, it can be severely damaged.
- The phantom is not equipped for dose measurements with dosimeters and it is not suited for material characterization with dual energy CT.
- The phantom is not certified as medical device.