

Local Anesthesia Teaching Simulator

The Columbia Dentoform Local Anesthesia Simulator has been designed with the assistance of dental professionals to provide a safe, realistic teaching experience for practicing local anesthesia techniques.

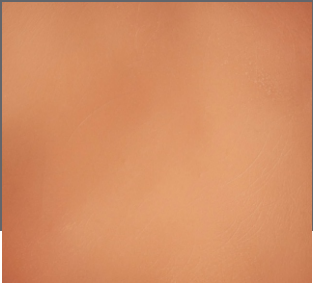
Students are able to practice identifying the appropriate anatomical landmarks for anesthesia, as demonstrated by licensed professionals. Students are able to self-assess the positioning of the local anesthesia syringe over and over again, gaining competence and confidence to move onto their patients.

The Columbia Local Anesthesia Simulator is great for teaching a variety of dry injection infiltrations in their respective anatomical regions. The simulator features a silicon face over anatomically correct jaws and upper and lower permanent teeth. The face connects to a metal cranium that can be attached onto a bench mount, chair mount, or table top stand (*not included*)



Self Sealing Skin

The flexible, durable silicone skin and mouth lining are similar to materials used in artificial limbs and have a memory which allows the needle to pierce the silicone and be removed leaving no signs of insertion. Students will need to rely on their training, and not look for previous injection site indications.

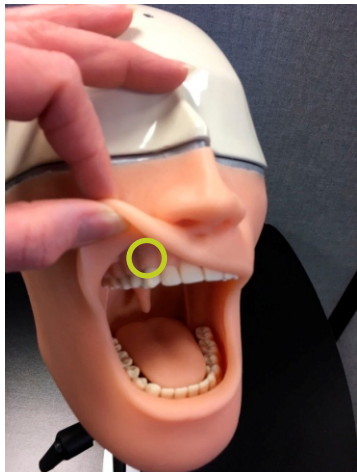


Sensor Models

Models 1KOATMLS13 and 1KOATM13 are designed with conductive sensors which activate lights and/or sound when the target area is touched by a dry injection needle. These models have sensors located in areas for practicing:

- Inferior Alveolar Nerve Block – sensors on both the left and right sides
- Bucal Infiltration Nerve Block - sensor over the (US) / 13 uropean (*patient's upper right canine*)

Sensor Locations



Oral Anesthesia Manikin Ordering Information:

With light and sound sensors	Part# 1KOATMLS13
With light or sound sensors	Part# 1KOATM13
With no light or sound sensors	Part# 1KOATMB13

Each manikin with light and/or sound sensors requires 3 AAA Batteries. Ships with batteries.

Disclaimer: Practice only dry injection.
Anesthetic solution or any liquid is not to be used when practicing injection techniques on the Local Anesthesia Simulator as liquids can interfere with the electronics.